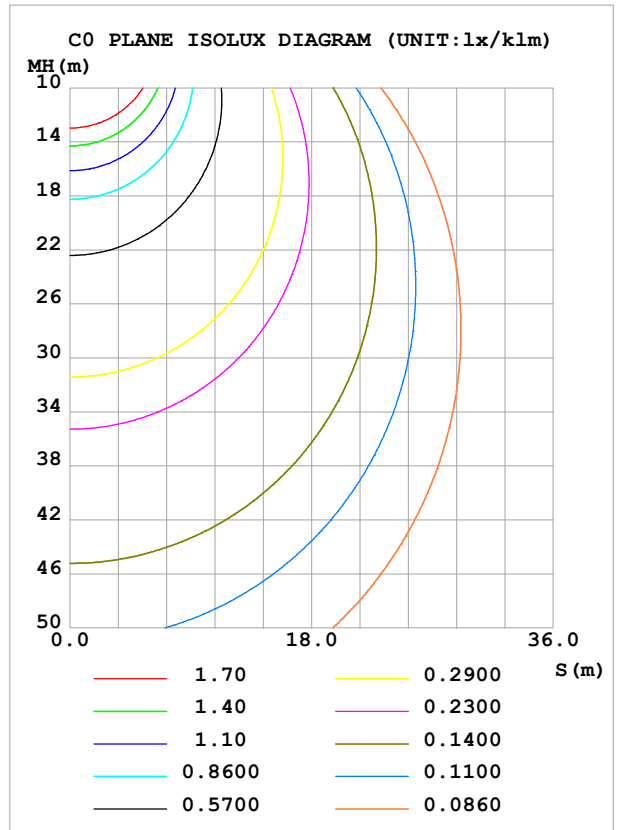
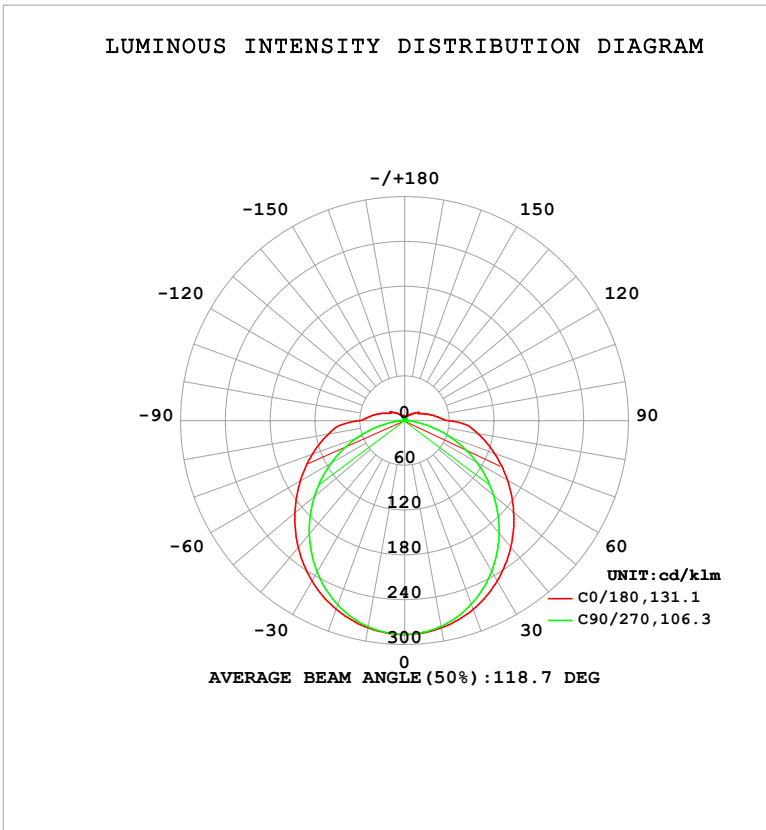


**LUMINAIRE PHOTOMETRIC TEST REPORT**

Test:U:0V I:0.0003A P:0W PF:0.0000 Freq:60.01Hz		
UTHDi:0.00% ITHDi:0.00% KDisp:0 Lamp Flux:1374.57x1 lm		
NAME: ASD-LSF8-2A25WH-8EM	TYPE:	WEIGHT:
SPEC.: 8W-5000K	DIM.:	SERIAL No.:
MFR.: ASD Lighting Corp.	SUR.: 0.6*0.1m	Shielding Angle:

DATA OF LAMP		PHOTOMETRIC DATA			
MODEL	ASD-LSF8-2A25WH-8EM	I <sub>max</sub> (cd/klm)	286.4	S/MH (C0/180)	1.29
NOMINAL POWER (W)	8	LOR (%)	100.0	S/MH (C90/270)	1.22
RATED VOLTAGE (V)	120	TOTAL FLUX (lm/klm)	1000.0	η UP, DN (C0-180)	4.3, 45.5
NOMINAL FLUX (lm)	1374.57	CIE CLASS	DIRECT	η UP, DN (C180-360)	4.4, 45.8
LAMPS INSIDE	1	η up (%)	8.7	CIBSE SHR NOM	1.25
TEST VOLTAGE (V)	120	η down (%)	91.3	CIBSE SHR MAX	1.35



C Range: 0 - 360DEG  
 C Interval: 45.0DEG  
 Test Speed: HIGH  
 Temperature: 25.3°C  
 Operators: lianghaizhu-2  
 Test Date: 2024-11-25

γ Range: 0 - 180DEG  
 γ Interval: 1.0DEG  
 Test System: EVERFINE GO-2000A\_V1 SYSTEM V2.00.488  
 Humidity: 65.0%  
 Test Distance: 9.770m [K=1.0000]  
 Remarks:

ZONAL FLUX DIAGRAM

ZONAL FLUX DIAGRAM:

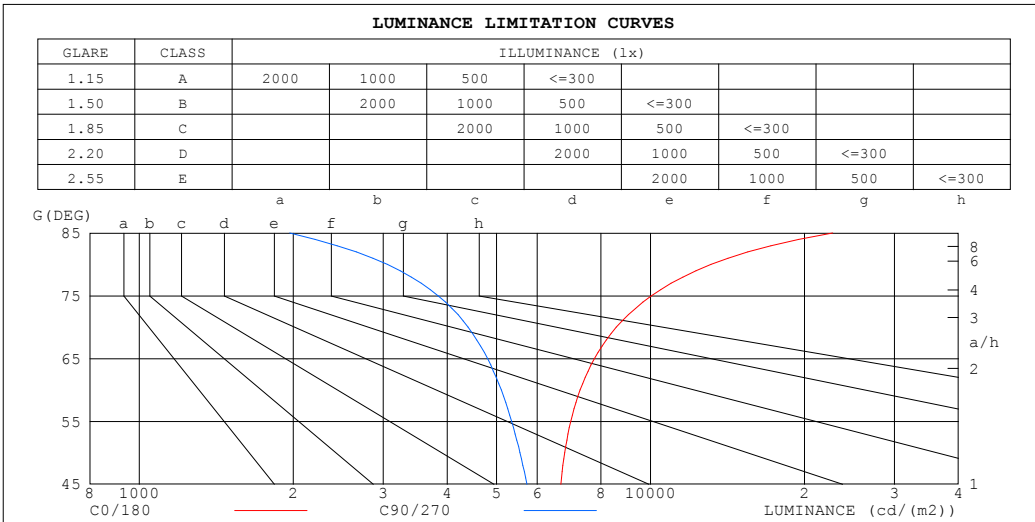
$\gamma$	C0	C45	C90	C135	C180	C225	C270	C315	$\gamma$	$\Phi$ zone	$\Phi$ total	%lum,lamp
10	281.9	281.1	280.0	280.8	282.0	281.0	280.5	281.4	0- 10	27.09	27.09	2.71,2.71
20	268.9	265.5	261.7	265.0	268.8	265.3	262.5	265.9	10- 20	77.46	104.5	10.5,10.5
30	248.1	240.8	233.2	240.3	248.2	240.7	234.4	241.3	20- 30	117.1	221.7	22.2,22.2
40	221.2	208.9	197.0	208.9	221.7	209.2	198.7	209.7	30- 40	141.3	363.0	36.3,36.3
50	190.8	172.9	155.8	173.4	192.0	173.6	157.8	173.8	40- 50	148.2	511.2	51.1,51.1
60	159.0	136.1	111.3	137.2	161.4	137.1	113.7	137.0	50- 60	138.9	650.1	65,65
70	128.1	101.4	65.63	103.2	131.5	102.6	68.20	101.8	60- 70	117.2	767.2	76.7,76.7
80	99.52	71.03	23.15	73.57	103.7	72.24	25.40	70.62	70- 80	88.14	855.4	85.5,85.5
90	58.60	38.63	1.127	40.39	60.64	40.35	0.8128	39.78	80- 90	57.33	912.7	91.3,91.3
100	39.77	23.44	1.128	25.42	42.87	25.64	1.015	24.54	90-100	30.70	943.4	94.3,94.3
110	27.45	14.84	1.476	16.71	29.55	15.87	1.520	15.44	100-110	20.08	963.5	96.3,96.3
120	22.67	10.38	1.892	11.88	22.35	11.00	1.947	9.990	110-120	13.01	976.5	97.6,97.6
130	14.98	8.053	2.426	9.143	16.74	8.614	2.492	7.750	120-130	9.072	985.6	98.6,98.6
140	10.56	6.920	2.922	7.554	11.57	7.303	2.997	6.636	130-140	6.081	991.6	99.2,99.2
150	8.223	5.384	3.349	6.497	6.808	6.391	3.418	5.277	140-150	3.938	995.6	99.6,99.6
160	6.575	4.511	3.692	6.085	7.617	5.798	3.747	4.392	150-160	2.548	998.1	99.8,99.8
170	5.057	3.973	4.310	5.036	6.090	5.243	4.291	3.924	160-170	1.424	999.6	100,100
180	4.044	4.615	4.688	4.571	4.040	4.620	4.683	4.566	170-180	0.4405	1000	100,100
DEG	LUMINOUS INTENSITY:cd/klm									UNIT:lm/klm		

C Range: 0 - 360DEG  
 C Interval: 45.0DEG  
 Test Speed: HIGH  
 Temperature:25.3°C  
 Operators:lianghaizhu-2  
 Test Date:2024-11-25

$\gamma$  Range: 0 - 180DEG  
 $\gamma$  Interval: 1.0DEG  
 Test System:EVERFINE GO-2000A\_V1 SYSTEM V2.00.488  
 Humidity:65.0%  
 Test Distance:9.770m [K=1.0000]  
 Remarks:

**LUMINANCE LIMITATION CURVES**

Test:U:0V I:0.0003A P:0W PF:0.0000 Freq:60.01Hz		
UTHDi:0.00% ITHDi:0.00% KDisp:0 Lamp Flux:1374.57x1 lm		
NAME: ASD-LSF8-2A25WH-8EM	TYPE:	WEIGHT:
SPEC.: 8W-5000K	DIM.:	SERIAL No.:
MFR.: ASD Lighting Corp.	SUR.: 0.6*0.1m	Shielding Angle:



LUMINANCE cd/(m2)		
G (DEG)	C0/180	C90/270
85	22726	1970
80	13122	3055
75	10036	3841
70	8575	4398
65	7765	4799
60	7281	5103
55	6980	5348
50	6794	5553
45	6678	5734

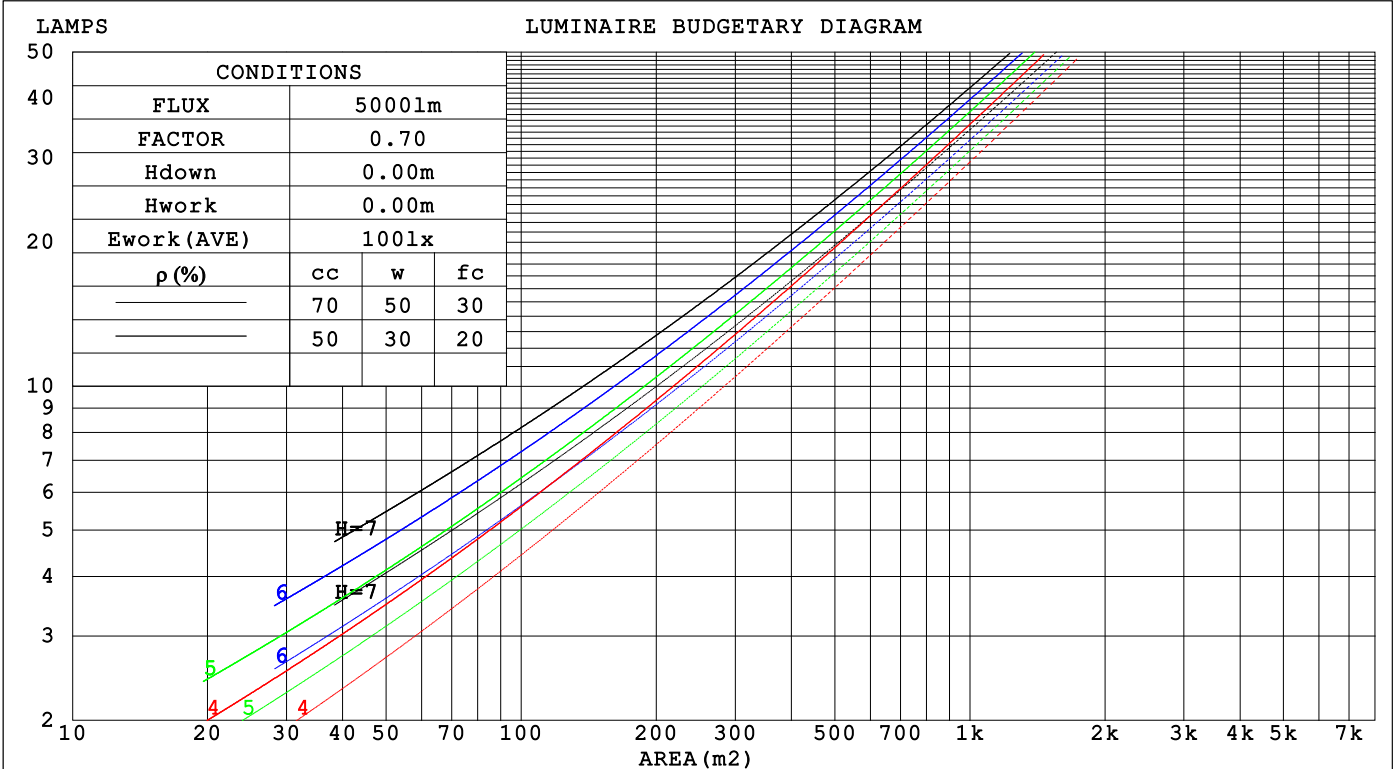
C Range: 0 - 360DEG  
 C Interval: 45.0DEG  
 Test Speed: HIGH  
 Temperature:25.3°C  
 Operators:lianghaizhu-2  
 Test Date:2024-11-25

γ Range: 0 - 180DEG  
 γ Interval: 1.0DEG  
 Test System:EVERFINE GO-2000A\_V1 SYSTEM V2.00.488  
 Humidity:65.0%  
 Test Distance:9.770m [K=1.0000]  
 Remarks:

CU AND LUMINAIRE BUDGETARY ESTIMATE DIAGRAM

Test:U:0V I:0.0003A P:0W PF:0.0000 Freq:60.01Hz		
UTHDi:0.00% ITHDi:0.00% KDisp:0 Lamp Flux:1374.57x1 lm		
NAME: ASD-LSP8-2A25WH-8EM	TYPE:	WEIGHT:
SPEC.: 8W-5000K	DIM.:	SERIAL No.:
MFR.: ASD Lighting Corp.	SUR.: 0.6*0.1m	Shielding Angle:

pcc	80%			70%			50%			30%			10%			0
pw	50%	30%	10%	50%	30%	10%	50%	30%	10%	50%	30%	10%	50%	30%	10%	0
pfc	20%			20%			20%			20%			20%			0
RCR	RCR:Room Cavity Ratio						Coefficients of Utilization(CU)									
0.0	1.17	1.17	1.17	1.13	1.13	1.13	1.06	1.06	1.06	.00	.00	.00	.94	.94	.94	.91
1.0	.99	.94	.90	.96	.91	.87	.90	.86	.83	.85	.82	.79	.80	.77	.75	.72
2.0	.85	.78	.72	.83	.76	.70	.78	.72	.67	.73	.68	.64	.69	.65	.61	.59
3.0	.75	.66	.59	.72	.64	.58	.68	.61	.56	.64	.58	.53	.60	.56	.51	.49
4.0	.66	.56	.49	.64	.55	.49	.60	.53	.47	.57	.50	.45	.54	.48	.44	.41
5.0	.59	.49	.42	.57	.48	.42	.54	.46	.40	.51	.44	.39	.48	.42	.38	.35
6.0	.53	.43	.37	.51	.42	.36	.48	.41	.35	.46	.39	.34	.44	.38	.33	.31
7.0	.48	.39	.32	.46	.38	.32	.44	.36	.31	.42	.35	.30	.40	.34	.29	.27
8.0	.43	.35	.29	.42	.34	.28	.40	.33	.28	.38	.32	.27	.36	.31	.26	.24
9.0	.40	.31	.26	.39	.31	.25	.37	.30	.25	.35	.29	.24	.34	.28	.24	.22
10.0	.37	.29	.23	.36	.28	.23	.34	.27	.22	.33	.26	.22	.31	.26	.21	.20



C Range: 0 - 360DEG  
 C Interval: 45.0DEG  
 Test Speed: HIGH  
 Temperature:25.3°C  
 Operators:lianghaizhu-2  
 Test Date:2024-11-25

γ Range: 0 - 180DEG  
 γ Interval: 1.0DEG  
 Test System:EVERFINE GO-2000A\_V1 SYSTEM V2.00.488  
 Humidity:65.0%  
 Test Distance:9.770m [K=1.0000]  
 Remarks:

**WEC AND CCEC**

Test:U:0V I:0.0003A P:0W PF:0.0000 Freq:60.01Hz		
UTHDi:0.00% ITHDi:0.00% KDisp:0 Lamp Flux:1374.57x1 lm		
NAME: ASD-LSP8-2A25WH-8EM	TYPE:	WEIGHT:
SPEC.: 8W-5000K	DIM.:	SERIAL No.:
MFR.: ASD Lighting Corp.	SUR.: 0.6*0.1m	Shielding Angle:

$\rho_{CC}$	80%			70%			50%			30%			10%			0
$\rho_w$	50%	30%	10%	50%	30%	10%	50%	30%	10%	50%	30%	10%	50%	30%	10%	0
$\rho_{fc}$	20%			20%			20%			20%			20%			0
RCR	RCR:Room Cavity Ratio						Wall Exitance Coefficients(WEC)									
0.0																
1.0	.360	.205	.065	.350	.200	.063	.332	.190	.061	.315	.182	.058	.299	.174	.056	
2.0	.319	.175	.054	.311	.171	.053	.294	.164	.051	.279	.156	.049	.265	.150	.047	
3.0	.287	.153	.046	.279	.150	.045	.265	.143	.044	.251	.137	.042	.238	.132	.041	
4.0	.261	.135	.040	.254	.133	.039	.240	.127	.038	.228	.122	.037	.216	.118	.036	
5.0	.238	.121	.035	.232	.119	.035	.220	.115	.034	.209	.110	.033	.198	.106	.032	
6.0	.219	.110	.031	.213	.108	.031	.203	.104	.030	.193	.100	.029	.183	.096	.029	
7.0	.203	.100	.028	.198	.098	.028	.188	.095	.027	.179	.092	.027	.170	.088	.026	
8.0	.189	.092	.026	.184	.091	.026	.175	.087	.025	.167	.084	.024	.159	.081	.024	
9.0	.176	.085	.024	.172	.084	.023	.164	.081	.023	.156	.078	.022	.149	.076	.022	
10.0	.165	.079	.022	.161	.078	.022	.154	.075	.021	.147	.073	.021	.140	.070	.020	

$\rho_{CC}$	80%			70%			50%			30%			10%			0
$\rho_w$	50%	30%	10%	50%	30%	10%	50%	30%	10%	50%	30%	10%	50%	30%	10%	0
$\rho_{fc}$	20%			20%			20%			20%			20%			0
RCR	RCR:Room Cavity Ratio						Ceiling Cavity Exitance Coefficients(CCEC)									
0.0	.257	.257	.257	.220	.220	.220	.150	.150	.150	.086	.086	.086	.028	.028	.028	
1.0	.251	.223	.197	.215	.191	.170	.147	.132	.118	.085	.076	.068	.027	.024	.022	
2.0	.243	.199	.162	.209	.172	.140	.143	.119	.098	.082	.069	.057	.026	.022	.019	
3.0	.236	.182	.140	.202	.157	.121	.139	.109	.085	.080	.064	.050	.026	.021	.016	
4.0	.228	.169	.125	.196	.146	.108	.134	.102	.076	.078	.060	.045	.025	.019	.015	
5.0	.220	.159	.114	.189	.138	.100	.130	.096	.070	.075	.057	.042	.024	.018	.014	
6.0	.213	.151	.107	.183	.131	.093	.126	.092	.066	.073	.054	.039	.024	.018	.013	
7.0	.206	.144	.101	.177	.125	.088	.122	.088	.063	.071	.052	.037	.023	.017	.012	
8.0	.199	.139	.097	.171	.120	.085	.119	.084	.060	.069	.050	.036	.022	.016	.012	
9.0	.193	.134	.094	.166	.116	.082	.115	.082	.058	.067	.048	.035	.022	.016	.012	
10.0	.187	.130	.091	.161	.113	.080	.112	.079	.057	.065	.047	.034	.021	.015	.011	

C Range: 0 - 360DEG  
 C Interval: 45.0DEG  
 Test Speed: HIGH  
 Temperature:25.3°C  
 Operators:lianghaizhu-2  
 Test Date:2024-11-25

$\gamma$  Range: 0 - 180DEG  
 $\gamma$  Interval: 1.0DEG  
 Test System:EVERFINE GO-2000A\_V1 SYSTEM V2.00.488  
 Humidity:65.0%  
 Test Distance:9.770m [K=1.0000]  
 Remarks:

**UGR(Unified Glare Rating) Table**

Test:U:0V I:0.0003A P:0W PF:0.0000 Freq:60.01Hz UTHDi:0.00% ITHDi:0.00% KDisp:0 Lamp Flux:1374.57x1 lm										
NAME: ASD-LSP8-2A25WH-8EM					TYPE:			WEIGHT:		
SPEC.: 8W-5000K					DIM.:			SERIAL No.:		
MFR.: ASD Lighting Corp.					SUR.: 0.6*0.1m			Shielding Angle:		
ceiling/cavity	0.7	0.7	0.5	0.5	0.3	0.7	0.7	0.5	0.5	0.3
walls	0.5	0.3	0.5	0.3	0.3	0.5	0.3	0.5	0.3	0.3
working plane	0.2	0.2	0.2	0.2	0.2	0.2	0.2	0.2	0.2	0.2
Room dimensions	Viewed crosswise					Viewed endwise				
x = 2H y = 2H	18.0	19.5	18.4	19.9	20.2	16.8	18.3	17.2	18.6	19.0
3H	20.3	21.7	20.7	22.1	22.5	18.3	19.6	18.7	20.0	20.4
4H	21.6	22.9	22.0	23.3	23.7	18.8	20.1	19.3	20.5	20.9
6H	22.9	24.2	23.4	24.6	25.0	19.2	20.4	19.6	20.8	21.3
8H	23.7	24.9	24.2	25.3	25.8	19.2	20.4	19.7	20.9	21.3
12H	24.6	25.7	25.1	26.2	26.7	19.3	20.4	19.8	20.9	21.3
4H 2H	18.6	19.9	19.0	20.3	20.7	17.7	19.0	18.1	19.4	19.8
3H	21.1	22.2	21.6	22.7	23.2	19.4	20.5	19.9	21.0	21.5
4H	22.5	23.5	23.0	24.0	24.5	20.1	21.2	20.6	21.6	22.2
6H	24.1	25.0	24.6	25.5	26.1	20.7	21.6	21.2	22.1	22.7
8H	25.0	25.8	25.5	26.4	26.9	20.8	21.7	21.4	22.2	22.8
12H	26.0	26.8	26.6	27.3	27.9	20.9	21.7	21.5	22.3	22.9
8H 4H	22.8	23.7	23.4	24.2	24.8	20.9	21.7	21.4	22.3	22.8
6H	24.7	25.4	25.2	26.0	26.6	21.7	22.5	22.3	23.0	23.6
8H	25.7	26.4	26.3	27.0	27.6	22.1	22.8	22.7	23.3	24.0
12H	27.0	27.6	27.6	28.2	28.8	22.4	22.9	23.0	23.5	24.2
12H 4H	22.9	23.7	23.4	24.2	24.8	21.1	21.9	21.6	22.4	23.0
6H	24.8	25.4	25.4	26.0	26.6	22.1	22.8	22.7	23.4	24.0
8H	25.9	26.5	26.6	27.1	27.8	22.6	23.2	23.3	23.8	24.5
Variations with the observer position at spacings(CIE Pub.117):										
S = 1.0H	+ 0.1 / - 0.1					+ 0.1 / - 0.2				
1.5H	+ 0.2 / - 0.2					+ 0.2 / - 0.3				
2.0H	+ 0.2 / - 0.3					+ 0.2 / - 0.4				

CIE Pub.117, 1375 lm Total Lamp Luminous Flux Correct (8log(F/F0) = 1.1)  
 Area: 0.06 m2

C Range: 0 - 360DEG	γ Range: 0 - 180DEG
C Interval: 45.0DEG	γ Interval: 1.0DEG
Test Speed: HIGH	Test System:EVERFINE GO-2000A_V1 SYSTEM V2.00.488
Temperature:25.3°C	Humidity:65.0%
Operators:lianghaizhu-2	Test Distance:9.770m [K=1.0000]
Test Date:2024-11-25	Remarks:

**UTILIZATION FACTORS TABLE**

Test:U:0V I:0.0003A P:0W PF:0.0000 Freq:60.01Hz UTHDi:0.00% ITHDi:0.00% KDisp:0 Lamp Flux:1374.57x1 lm		
NAME: ASD-LSF8-2A25WH-8EM	TYPE:	WEIGHT:
SPEC.: 8W-5000K	DIM.:	SERIAL No.:
MFR.: ASD Lighting Corp.	SUR.: 0.6*0.1m	Shielding Angle:

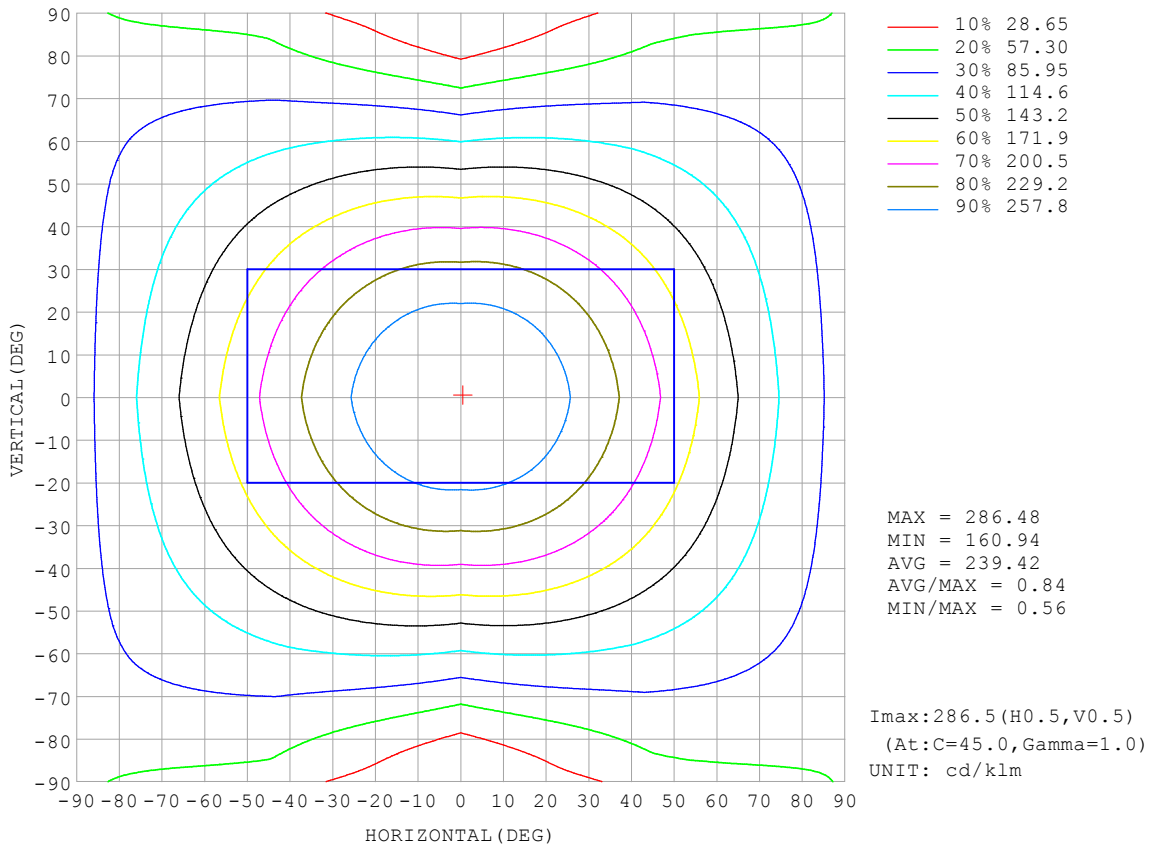
REFLECTANCE										
Ceiling	0.8	0.8	0.8	0.7	0.7	0.7	0.5	0.5	0.5	0
Walls	0.7	0.5	0.3	0.7	0.5	0.3	0.7	0.5	0.3	0
Working plane	0.2	0.2	0.2	0.2	0.2	0.2	0.2	0.2	0.2	0
ROOM INDEX	UTILIZATION FACTORS (PERCENT) $k(RI) \times RCR = 5$									
k = 0.60	53	40	33	52	40	33	50	39	33	26
0.80	62	50	42	61	49	42	58	48	41	34
1.00	70	58	50	68	57	49	66	58	49	41
1.25	77	65	57	75	64	57	72	62	55	47
1.50	82	71	63	80	69	62	76	67	60	51
2.00	89	79	71	86	77	70	82	74	68	58
2.50	93	84	77	90	82	75	85	78	73	62
3.00	97	88	82	94	86	80	88	82	77	66
4.00	101	94	88	98	92	86	92	87	83	71
5.00	104	98	93	101	95	90	95	90	86	74
ROOM INDEX	UF(total)									Direct
According to DIN EN 13032-2 2004			Suspended				SHRNOM = 1.25			

C Range: 0 - 360DEG  
 C Interval: 45.0DEG  
 Test Speed: HIGH  
 Temperature:25.3°C  
 Operators:lianghaizhu-2  
 Test Date:2024-11-25

γ Range: 0 - 180DEG  
 γ Interval: 1.0DEG  
 Test System:EVERFINE GO-2000A\_V1 SYSTEM V2.00.488  
 Humidity:65.0%  
 Test Distance:9.770m [K=1.0000]  
 Remarks:

**ISOCANDELA DIAGRAM**

Test:U:0V I:0.0003A P:0W PF:0.0000 Freq:60.01Hz UTHDi:0.00% ITHDi:0.00% KDisp:0 Lamp Flux:1374.57x1 lm		
NAME: ASD-LSF8-2A25WH-8EM	TYPE:	WEIGHT:
SPEC.: 8W-5000K	DIM.:	SERIAL No.:
MFR.: ASD Lighting Corp.	SUR.: 0.6*0.1m	Shielding Angle:

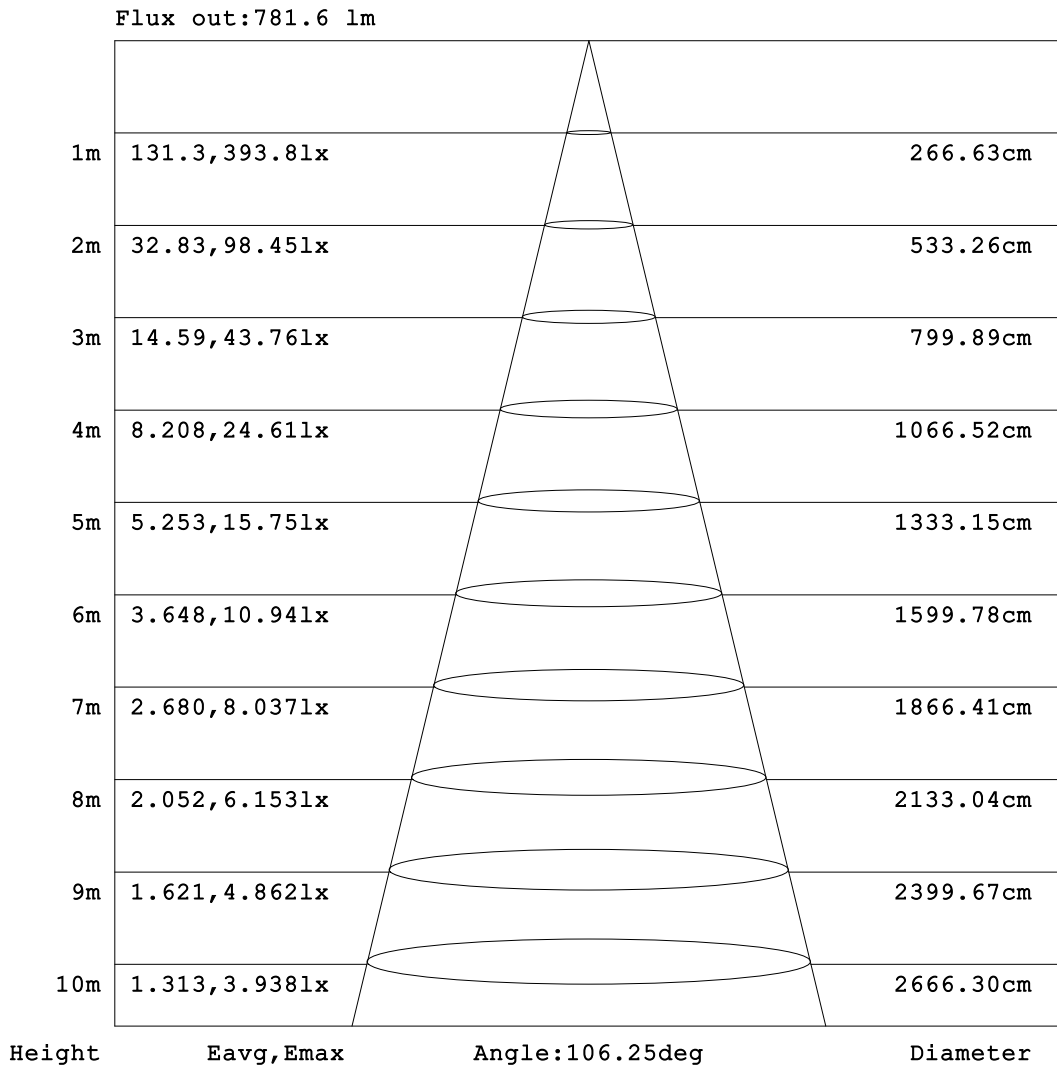


C Range: 0 - 360DEG  
 C Interval: 45.0DEG  
 Test Speed: HIGH  
 Temperature:25.3°C  
 Operators:lianghaizhu-2  
 Test Date:2024-11-25

γ Range: 0 - 180DEG  
 γ Interval: 1.0DEG  
 Test System:EVERFINE GO-2000A\_V1 SYSTEM V2.00.488  
 Humidity:65.0%  
 Test Distance:9.770m [K=1.0000]  
 Remarks:

**AAI Figure**

Test:U:0V I:0.0003A P:0W PF:0.0000 Freq:60.01Hz		
UTHDi:0.00% ITHDi:0.00% KDisp:0 Lamp Flux:1374.57x1 lm		
NAME: ASD-LSP8-2A25WH-8EM	TYPE:	WEIGHT:
SPEC.: 8W-5000K	DIM.:	SERIAL No.:
MFR.: ASD Lighting Corp.	SUR.: 0.6*0.1m	Shielding Angle:



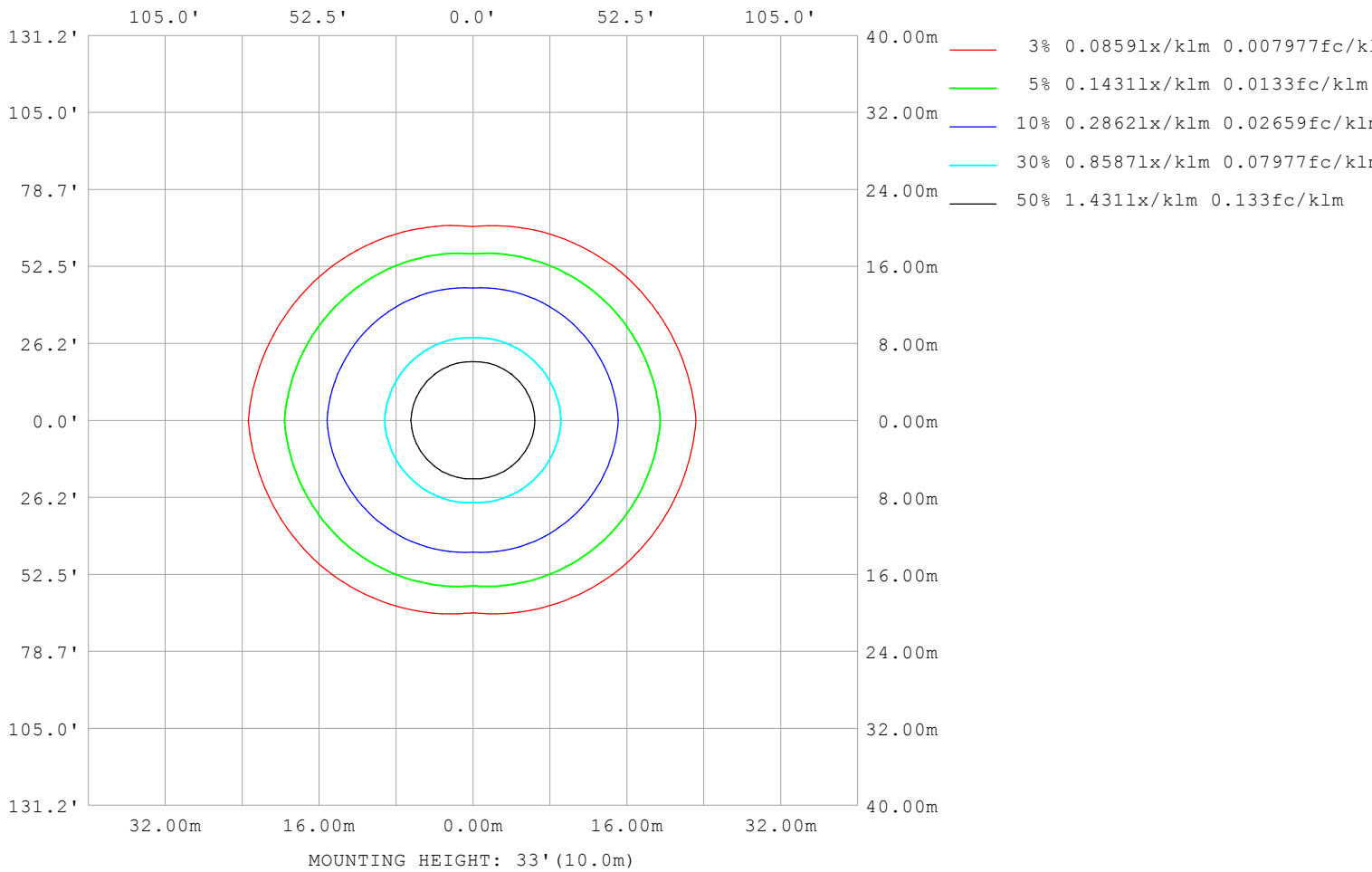
Note:The Curves indicate the illuminated area and the average illumination when the luminaire is at different distance.

C Range: 0 - 360DEG  
 C Interval: 45.0DEG  
 Test Speed: HIGH  
 Temperature:25.3°C  
 Operators:lianghaizhu-2  
 Test Date:2024-11-25

γ Range: 0 - 180DEG  
 γ Interval: 1.0DEG  
 Test System:EVERFINE GO-2000A\_V1 SYSTEM V2.00.488  
 Humidity:65.0%  
 Test Distance:9.770m [K=1.0000]  
 Remarks:

**ISOLUX DIAGRAM**

Test:U:0V I:0.0003A P:0W PF:0.0000 Freq:60.01Hz UTHDi:0.00% ITHDi:0.00% KDisp:0 Lamp Flux:1374.57x1 lm		
NAME: ASD-LSF8-2A25WH-8EM	TYPE:	WEIGHT:
SPEC.: 8W-5000K	DIM.:	SERIAL No.:
MFR.: ASD Lighting Corp.	SUR.: 0.6*0.1m	Shielding Angle:



C Range: 0 - 360DEG  
 C Interval: 45.0DEG  
 Test Speed: HIGH  
 Temperature:25.3°C  
 Operators:lianghaizhu-2  
 Test Date:2024-11-25

γ Range: 0 - 180DEG  
 γ Interval: 1.0DEG  
 Test System:EVERFINE GO-2000A\_V1 SYSTEM V2.00.488  
 Humidity:65.0%  
 Test Distance:9.770m [K=1.0000]  
 Remarks:

**LED Avg.L Report**

Test:U:0V I:0.0003A P:0W PF:0.0000 Freq:60.01Hz UTHDi:0.00% ITHDi:0.00% KDisp:0 Lamp Flux:1374.57x1 lm		
NAME: ASD-LSF8-2A25WH-8EM	TYPE:	WEIGHT:
SPEC.: 8W-5000K	DIM.:	SERIAL No.:
MFR.: ASD Lighting Corp.	SUR.: 0.6*0.1m	Shielding Angle:

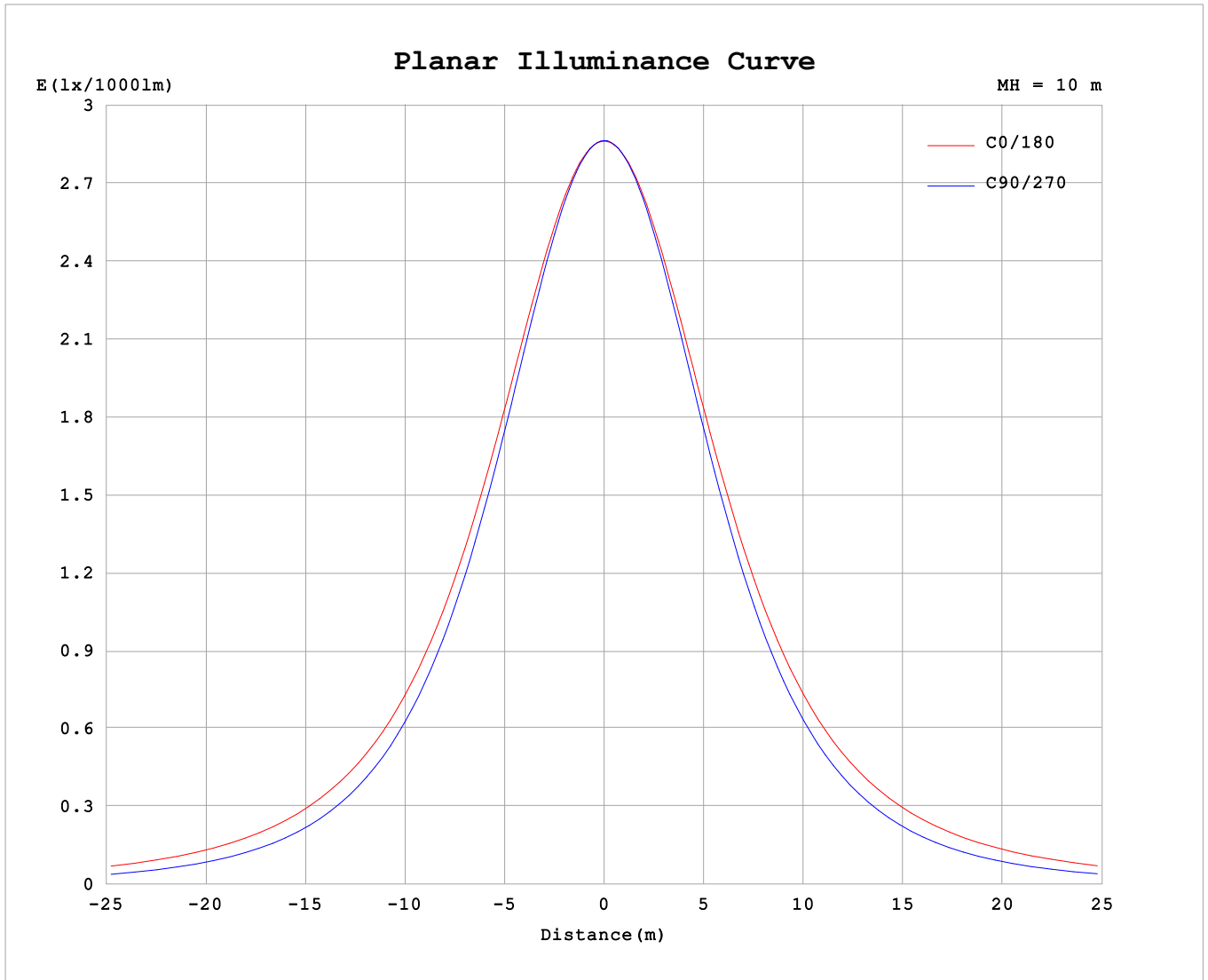
AvgL	cd/m2
L_0~180 (65) av	7850
L_0~180 (75) av	10212
L_0~180 (85) av	23248
L_90~270 (65) av	4866
L_90~270 (75) av	3954
L_90~270 (85) av	2145
L_45 (65) av	6458
L_45 (75) av	7651
L_45 (85) av	15421

Standard: GB/T 29293-2012

C Range: 0 - 360DEG  
 C Interval: 45.0DEG  
 Test Speed: HIGH  
 Temperature:25.3°C  
 Operators:lianghaizhu-2  
 Test Date:2024-11-25

γ Range: 0 - 180DEG  
 γ Interval: 1.0DEG  
 Test System:EVERFINE GO-2000A\_V1 SYSTEM V2.00.488  
 Humidity:65.0%  
 Test Distance:9.770m [K=1.0000]  
 Remarks:

**Planar Illuminance Curve**



C Range: 0 - 360DEG  
 C Interval: 45.0DEG  
 Test Speed: HIGH  
 Temperature: 25.3°C  
 Operators: lianghaizhu-2  
 Test Date: 2024-11-25

γ Range: 0 - 180DEG  
 γ Interval: 1.0DEG  
 Test System: EVERFINE GO-2000A\_V1 SYSTEM V2.00.488  
 Humidity: 65.0%  
 Test Distance: 9.770m [K=1.0000]  
 Remarks:

LUMINOUS DISTRIBUTION INTENSITY DATA

Test:U:0V I:0.0003A P:0W PF:0.0000 Freq:60.01Hz		
UTHDi:0.00% ITHDi:0.00% KDisp:0 Lamp Flux:1374.57x1 lm		
NAME: ASD-LSF8-2A25WH-8EM	TYPE:	WEIGHT:
SPEC.: 8W-5000K	DIM.:	SERIAL No.:
MFR.: ASD Lighting Corp.	SUR.: 0.6*0.1m	Shielding Angle:

Table--1

UNIT: cd/klm

C (DEG) \ γ (DEG)	0	45	90	135	180	225	270	315										
0	286	286	286	286	286	286	286	286										
5	285	285	285	285	285	285	285	285										
10	282	281	280	281	282	281	281	281										
15	277	275	272	274	276	274	273	275										
20	269	266	262	265	269	265	263	266										
25	259	254	249	254	259	254	250	255										
30	248	241	233	240	248	241	234	241										
35	235	226	216	225	236	226	217	226										
40	221	209	197	209	222	209	199	210										
45	206	191	177	191	207	192	179	192										
50	191	173	156	173	192	174	158	174										
55	175	154	134	155	177	155	136	155										
60	159	136	111	137	161	137	114	137										
65	143	118	88.5	120	146	119	91.0	119										
70	128	101	65.6	103	132	103	68.2	102										
75	113	85.6	43.4	87.8	117	86.8	46.0	85.6										
80	99.5	71.0	23.2	73.6	104	72.2	25.4	70.6										
85	86.5	57.8	7.49	60.7	90.4	59.0	8.83	57.1										
90	58.6	38.6	1.13	40.4	60.6	40.4	0.81	39.8										
95	47.1	29.7	1.12	31.5	50.2	31.9	0.83	30.8										
100	39.8	23.4	1.13	25.4	42.9	25.6	1.02	24.5										
105	33.3	18.6	1.30	20.6	36.1	20.3	1.28	19.5										
110	27.4	14.8	1.48	16.7	29.6	15.9	1.52	15.4										
115	22.6	12.2	1.66	14.5	24.0	13.6	1.72	12.7										
120	22.7	10.4	1.89	11.9	22.4	11.0	1.95	9.99										
125	18.4	9.00	2.15	10.2	20.1	9.45	2.21	8.58										
130	15.0	8.05	2.43	9.14	16.7	8.61	2.49	7.75										
135	12.4	7.43	2.69	8.21	14.0	7.73	2.74	7.06										
140	10.6	6.92	2.92	7.55	11.6	7.30	3.00	6.64										
145	9.24	6.04	3.15	6.81	8.84	6.46	3.23	6.01										
150	8.22	5.38	3.35	6.50	6.81	6.39	3.42	5.28										
155	7.35	4.89	3.53	6.26	7.20	6.19	3.60	4.88										
160	6.57	4.51	3.69	6.08	7.62	5.80	3.75	4.39										
165	5.88	4.15	4.00	5.45	6.97	5.33	3.99	4.08										
170	5.06	3.97	4.31	5.04	6.09	5.24	4.29	3.92										
175	3.97	4.04	4.49	4.95	4.91	4.93	4.54	3.95										
180	4.04	4.62	4.69	4.57	4.04	4.62	4.68	4.57										

C Range: 0 - 360DEG  
 C Interval: 45.0DEG  
 Test Speed: HIGH  
 Temperature:25.3°C  
 Operators:lianghaizhu-2  
 Test Date:2024-11-25

γ Range: 0 - 180DEG  
 γ Interval: 1.0DEG  
 Test System:EVERFINE GO-2000A\_V1 SYSTEM V2.00.488  
 Humidity:65.0%  
 Test Distance:9.770m [K=1.0000]  
 Remarks: