



# LED COMMERCIAL DOWNLIGHT

## CDL7 series

► **DESIGN** - LED COMMERCIAL DOWNLIGHT comes with a durable aluminum housing resistant to rust and impact, anti-glare PC lens, spring-loaded clips and 1.6 ft cord in metal hose. It is designed to operate on 120-277V circuits with a 0-10V dimmable driver.

► **VARIETY** - The fixture is available in 4-inch, 6-inch, 8-inch, and 10-inch sizes and comes in either white or black finishes.

► **COLOR AND POWER SELECTABLE** - You can choose either a 2700K soft white, 3000K warm white, 3500K neutral white, 4000K cool white, or 5000K daylight color temperature, and change the power with a simple switch.

► **CR190+** - Rating provides rich and natural colors and keeps your space looking and feeling vibrant. True bright colors also improve your mood and general health.

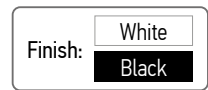
► **INSTALLATION** - This fixture is IC rated so there is no can or any other housing required. It is also Wet location rated, making it perfect for any spaces with humidity requirements. Perfect for retail, hospitality, or any other commercial space with a high ceiling.

► **ADVANTAGES** - With a lifespan of 50,000 hours, these fixtures are made to last decades under normal operation! ASD provides a 5-year limited warranty along with UL and Energy Star certifications to guarantee top quality products and safety!

► **OPTIONS:**

► **MODELS WITH BATTERY BACK-UP** - The built-in 8W battery back-up provides 90 minutes of power in case of emergency.

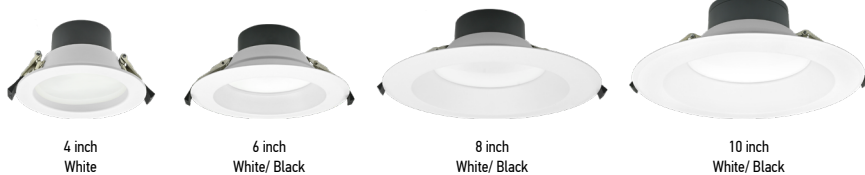
► **MODELS WITH INFRARED MOTION SENSOR** - The built-in infrared motion sensor will turn off the fixture automatically when no motion is detected, ensuring greater energy efficiency and longer-lasting performance. Sensor settings can be conveniently adjusted using a remote control.



**with battery back-up**



**with motion sensor**



4 inch  
White

6 inch  
White/ Black

8 inch  
White/ Black

10 inch  
White/ Black

6 inch  
White

8 inch  
White

### PRODUCT PRESENTATION:

Model	Size	Power	Voltage	Dimming	Lumens	CCT	Finish	Dimensions	Certification
<b>CDL7</b>									
ASD-CDL7-4DA13AC	4 inch	7/10/13 W	120-277V	0-10V	1,053lm	2,700/3,000/3,500/4,000/5,000 K	White	5-3/8" x 5-3/8" x 2-3/4"	ETL(5029309), ES, T24, JA8
ASD-CDL7-6DA22AC	6 inch	12/14/16/18/22 W	120-277V	0-10V	1,726lm	2,700/3,000/3,500/4,000/5,000 K	White	8-1/4" x 8-1/4" x 3-7/16"	ETL(5029309), ES, T24, JA8
ASD-CDL7-6DA22AC-BK	6 inch	10/15/22 W	120-277V	0-10V	1,640lm	2,700/3,000/3,500/4,000/5,000 K	Black	8-1/4" x 8-1/4" x 4"	UL(E473854),ES
ASD-CDL7-8DA30AC	8 inch	14/18/22/26/30 W	120-277V	0-10V	2,507lm	2,700/3,000/3,500/4,000/5,000 K	White	10-1/16" x 10-1/16" x 3-7/16"	ETL(5029309), ES, T24, JA8
ASD-CDL7-8DA30AC-BK	8 inch	12/20/30 W	120-277V	0-10V	2,400lm	2,700/3,000/3,500/4,000/5,000 K	Black	10-1/4" x 10-1/4" x 4-7/16"	UL(E473854),ES
ASD-CDL7-10DA40AC	10 inch	20/25/30/35/40 W	120-277V	0-10V	3,445lm	2,700/3,000/3,500/4,000/5,000 K	White	11-7/16" x 11-7/16" x 4-5/16"	ETL(5029309), ES, T24, JA8
ASD-CDL7-10DA40AC-BK	10 inch	20/30/40 W	120-277V	0-10V	3,302lm	2,700/3,000/3,500/4,000/5,000 K	Black	11-5/16" x 11-5/16" x 4-15/16"	UL(E473854), ES

For most up-to-date spec sheets please refer to [asd-lighting.com](http://asd-lighting.com)





# LED COMMERCIAL DOWNLIGHT

## CDL7 series

Model	Size	Power	Voltage	Dimming	Lumens	CCT	Finish	Dimensions	Pre-Installed	Certification
<b>CDL7 WITH BATTERY BACK-UP</b>										
ASD-CDL7-6DA22-8EM	6 inch	12/14/16/18/22 W	120-277V	0-10V	1,726lm	2,700/3,000/3,500/4,000/5,000 K	White	8-1/4" x 8-1/4" x 3-7/16"	8W Battery Back-up	ETL(5029309), ES, T24, JA8
ASD-CDL7-8DA30-8EM	8 inch	14/18/22/26/30 W	120-277V	0-10V	2,473lm	2,700/3,000/3,500/4,000/5,000 K	White	10-1/16" x 10-1/16" x 3-7/16"	8W Battery Back-Up	ETL(5029309), ES, T24, JA8
<b>CDL7 WITH MOTION SENSOR</b>										
ASD-CDL7-6A22WH-MS	6 inch	12/14/16/18/22 W	120-277V	0-10V	1,726lm	2,700/3,000/3,500/4,000/5,000 K	White	8-1/4" x 8-1/4" x 3-11/16"	Motion sensor	ETL(5029309), ES, T24, JA8
ASD-CDL7-8A30WH-MS	8 inch	14/18/22/26/30 W	120-277V	0-10V	2,507lm	2,700/3,000/3,500/4,000/5,000 K	White	10-1/16" x 10-1/16" x 3-11/16"	Motion sensor	ETL(5029309), ES, T24, JA8

For detailed luminous flux information please refer to Annex 1, page 5.

### TECHNICAL PARAMETERS:

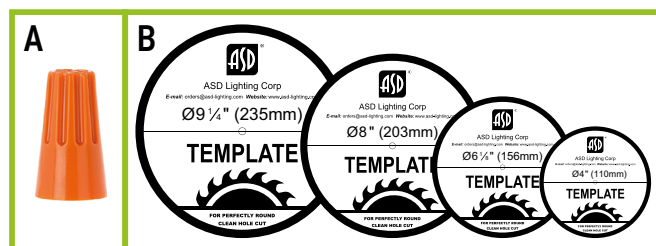
Model	Max input current	Max input current	Work environment	Operating temperature	Power factor	Beam Angle	Surge protection	Housing	Lens	CRI
<b>CDL7</b>										
ASD-CDL7-4DA13AC	0.10A	2A	Wet location	-4°F to 113°F(-20°C to 45°C)	>0.9	104°	2kV	Aluminum	PC	>90
ASD-CDL7-6DA22AC	0.18A	1A	Wet location	-4°F to 113°F(-20°C to 45°C)	>0.9	105°	2kV	Aluminum	PC	>90
ASD-CDL7-6DA22AC-BK	0.23A	43A	Wet location	-13°F to 113°F(-25°C to 45°C)	>0.9	95°	2kV	Aluminum	PC	>90
ASD-CDL7-8DA30AC	0.26A	2A	Wet location	-4°F to 113°F(-20°C to 45°C)	>0.9	105°	2kV	Aluminum	PC	>90
ASD-CDL7-8DA30AC-BK	0.3A	37A	Wet location	-13°F to 113°F(-25°C to 45°C)	>0.9	100°	2kV	Aluminum	PC	>90
ASD-CDL7-10DA40AC	0.34A	1A	Wet location	-4°F to 113°F(-20°C to 45°C)	>0.9	98°	2kV	Aluminum	PC	>90
ASD-CDL7-10DA40AC-BK	0.5A	50A	Wet location	-13°F to 113°F(-25°C to 45°C)	>0.9	100°	2kV	Aluminum	PC	>90
<b>CDL7 WITH BATTERY BACK-UP</b>										
ASD-CDL7-6DA22-8EM	0.18A	1A	Wet location	-4°F to 113°F(-20°C to 45°C)	>0.9	105°	2kV	Aluminum	PC	>90
ASD-CDL7-8DA30-8EM	0.26A	2A	Wet location	-4°F to 113°F(-20°C to 45°C)	>0.9	101°	2kV	Aluminum	PC	>90
<b>CDL7 WITH MOTION SENSOR</b>										
ASD-CDL7-6A22WH-MS	0.18A	1A	Wet location	-4°F to 113°F(-20°C to 45°C)	>0.9	92°	2kV	Aluminum	PC	>90
ASD-CDL7-8A30WH-MS	0.26A	2A	Wet location	-4°F to 113°F(-20°C to 45°C)	>0.9	101°	2kV	Aluminum	PC	>90

### DIMMING COMPATIBLE CONTROLS:



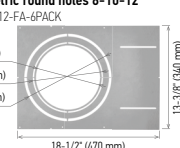
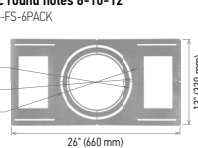
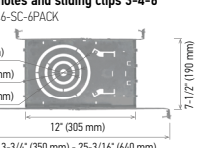
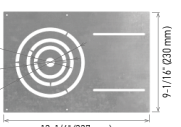
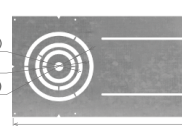
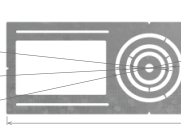
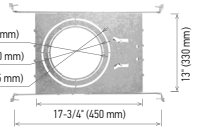
Dimming compatible controls				
Brand	Lutron			
Models	DVSTV-WH	DVSTV-LA	DVTV-WH	Leviton
	DVSTV-BR	DVSTV-BL	DVSTV-IV	DS 710-10Z
	DVSTV-GR	DVSTV-AL		AWSMT-7DW

### PACKAGE CONTENTS:

Description	Quantity
LED Commercial Downlight	1
Wire nut (A)	3
Template for 4, 6, 8 or 10 inch (B)	1
Box	1



### ACCESSORIES (sold separately):

<b>Remote control for motion sensor</b> ASD-06RC 	<b>Battery back-up kit</b> EMERGENCY LED DRIVER 8W BLD-HM08D 15W BLD-HM15D 	<b>New construction flat mounting plate with asymmetric round holes 8-10-12"</b> ASD-MPLR-81012-FA-6PACK 	<b>New construction flat mounting plate with symmetric round holes 8-10-12"</b> ASD-MPLR-81012-FS-6PACK 	<b>New construction mounting plate with round holes and sliding clips 3-4-6"</b> ASD-MPLR-346-SC-6PACK 
<b>New construction flat mounting plate with asymmetric round holes 3-4-6"</b> ASD-MPLR-346-FA-6PACK 	<b>New construction flat mounting plate with asymmetric round holes 3-4-6"</b> ASD-MPLR-346-FS-6PACK 	<b>New construction flat mounting plate with symmetric round holes 3-4-6"</b> ASD-MPLR-346-FS-6PACK 	<b>New construction mounting plate with square holes and sliding clips 8-10-12"</b> ASD-MPLS-81012-SC-6PACK 	

For most up-to-date spec sheets please refer to [asd-lighting.com](http://asd-lighting.com)



# LED COMMERCIAL DOWNLIGHT

## CDL7 series

### ACCESSORY COMPATIBILITY LIST:

Models	Accessories	Remote control for motion sensor ACS-06RC	Battery back-up kit 8W BLD-HM08D	Battery back-up kit 15W BLD-HM15D	New construction flat mounting plate with a symmetric round holes 3-4-6" ASD-MPLR-346-FA-6PACK	New construction flat mounting plate 18" with a symmetric round holes 3-4-6" ASD-MPLR18-346-FA-6PACK	New construction flat mounting plate with a symmetric round holes 8-10-12" ASD-MPLR-81012-FA-6PACK	New construction flat mounting plate with a symmetric round holes 3-4-6" ASD-MPLR-346-FS-6PACK	New construction flat mounting plate with symmetric round holes 8-10-12" ASD-MPLR-81012-FS-6PACK	New construction mounting plate with round holes and sliding clips 3-4-6" ASD-MPLR-346-SC-6PACK	New construction mounting plate with round holes and sliding clips 8-10-12" ASD-MPLR-81012-SC-6PACK
		ASD-CDL7	4"		•	•	•	•	•		
	6"		•	•	•	•				•	
	8"		•	•			•		•		•
	10"		•	•			•		•		•
ASD-CDL7-EM	6"				•	•	•			•	
	8"						•		•		•
ASD-CDL7-MS	6"	•			•	•	•	•		•	
	8"	•				•	•	•	•		•

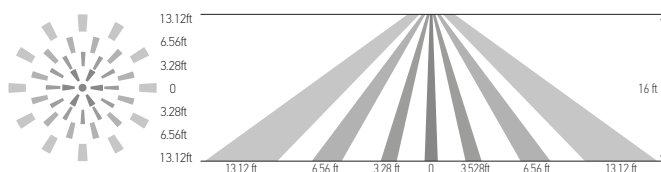
### REMOTE CONTROL **ASD-06RC** sold separately



Button	Remarks	Button	Remarks	Button	Remarks
<b>ON/OFF</b> ON/OFF	Turn the sensor ON/OFF.	<b>Auto</b> Auto	Enter "sensor mode" and perform previous settings.	<b>Reset</b> Reset	Enter "sensor mode" and perform the default settings.
<b>Scenes</b> Scenes	Shows current settings saved in remote.	<b>Start</b> Start	Press this to begin scene setup.	<b>Memory</b> Memory	Saves the scene settings.
<b>Apply</b> Apply	Applies current scene settings to the fixture.	<b>M H</b> Mounting height	Adjust detection area/sensitivity levels according to real installation situations, higher or lower.	<b>Send</b> Send	Memorize and send out the previous setting of individual parameters.
<b>%</b> Detection range	Also known as "sensitivity", 100 % means the highest sensitivity and longest distance. Use this button and the + - buttons to adjust.	<b>☀</b> Daylight sensor	The preset lux level at which motion will be detected. Use this button and the + - buttons to adjust.	<b>☾</b> Stand-by dimming	After hold time, the light will dim from 100 % to optional standby dimming levels. Use this button and the + - buttons to adjust.
<b>⌚</b> Hold time	The period that light will stay illuminated 100 % after no motion is detected. Use this button and the + - buttons to adjust.	<b>↑</b> Up	The main functional buttons to adjust the factors to desired level. Press + - button to dim light directly auto in non-detection mode.	<b>⌚</b> Stand-by period	The period after holdtime, during which the light keeps standby dimming level. Use this button and the + - buttons to adjust.
<b>CCT</b> CCT selectable	Not applicable to this product.	<b>↓</b> Down		<b>POWER</b> Power	Adjust brightness in both ON/OFF mode & sensor mode, minimum 10%, max 100%, each time this button is pressed it changes by 5%.
<b>○</b> Reserved button	Not applicable to this product.	<b>☀</b> Daylight harvesting	Daylight harvesting function enabled or disabled.	<b>Test</b> Test button	Press this button to test the sensor; it will temporarily change the hold time to 2s. This setting cannot be saved.

## BUILT-IN MOTION SENSOR INFORMATION

Specifications	
Detection Area	50%/100%
Hold Time	5s/1min/5min/10min
Daylight Threshold	Disable/50Lux/10Lux/2Lux
Operating voltage	10-15 V
Operating current	< 15 mA
Mounting height	5m/16ft max
Detection radius	2-4m (6.56-13ft)
By default, motion detection function is disabled and must be enabled via remote control.	



## BATTERY BACK-UP KIT INFORMATION

### **BLD-HM08D** **BLD-HM15D** sold separately:

Specifications	model: BLD-HM08D	model: BLD-HM15D
Input voltage	120-347 Vac, 50/60 Hz	
Input current	≤ 100 mA	
Output voltage	≤ 170 Vdc	≤ 175 Vdc
Output power	8W	15W
Lumen	800 lm	1,000 lm
Application	< 60W (0-10 V dimmable fixture)	< 100W (0/1-10 V dimmable fixture)
Ambient temperature	32°F to 122°F (0°C to 50°C)	

For most up-to-date spec sheets please refer to [asd-lighting.com](http://asd-lighting.com)



# LED COMMERCIAL DOWNLIGHT

## CDL7 series

## INSTALLATION GUIDE

### IMPORTANT SAFETY INFORMATION:

Please read all the instructions below before installation.

- ▶ Make sure that the supply voltage corresponds to the rated product voltage.
- ▶ The product must be installed by a qualified electrician in accordance with the National Electrical Code and corresponding local codes.
- ▶ If the product is damaged, do not use it.

### ⚠ WARNING

**Risk of personal injury – read and follow all warnings and installation instructions.** Keep or give to the owner for future reference.

**Risk of cuts:** Wear gloves to prevent cuts or abrasions when removing from carton, handling, installing, and maintaining this product.

**Risk of electric shock:** This product must be installed in accordance with the applicable installation code by a person familiar with the construction and operation of the product and the hazards involved.

**Risk of Fire:** Minimum 194°F supply conductors. Consult a qualified electrician to ensure correct branch circuit conductor.

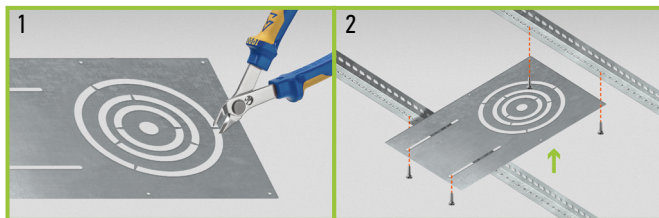
ASD® assumes no responsibility for claims arising out of improper or careless Installation or handling of this product.

### MOUNTING PLATE INSTALLATION

ASD-MPLR-346-FA ASD-MPLR18-346-FA ASD-MPLR-81012-FS

ASD-MPLR-346-FS ASD-MPLR-81012-FA sold separately:

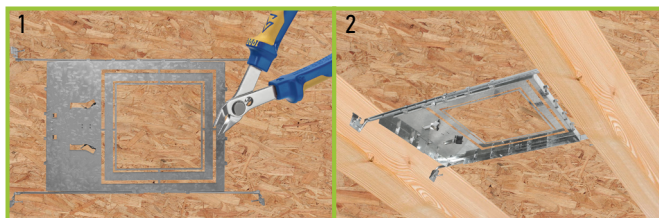
1. Remove the metal ring from the mounting plate according to the size of fixture.
2. Place the mounting plate and secure its position with screws on the beams.



### MOUNTING PLATE WITH SLIDING CLIPS INSTALLATION:

ASD-MPLR-346-SC ASD-MPLR-81012-SC sold separately:

1. Remove the metal ring from the mounting plate according to the size of fixture.
2. Adjust the sliding clips length from 13-3/4" into 25-3/16" for model MPL-346 and from 17-3/4" into 25-3/16" for model MPL-81012, and fix them with nails on each end.



### INSTALLATION STEPS:

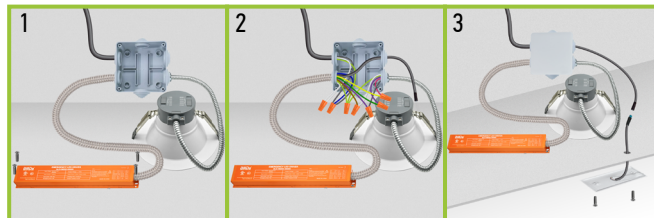
1. Use template to cut an appropriate sized hole. Before inserting the fixture into the mounting surface opening, choose power and color temperature with a simple switch.
2. Connect the wires using wire nuts: Black to Black, White to White, Green to Green.
3. Fold up the two spring mounting tabs and release as the fixture is placed into the mounting surface. Ensure that the spring mounting tabs have securely mounted the fixture so that the front trim is flush against the mounting surface.



### BATTERY BACK-UP KIT INSTALLATION

BLD-HM08D BLD-HM15D sold separately:

1. Secure the battery back-up to the ceiling.
2. Connect wires as shown on electrical diagram.
3. Connect test switch and affix it in the hole on surface.



For most up-to-date spec sheets please refer to [asd-lighting.com](http://asd-lighting.com)



# LED COMMERCIAL DOWNLIGHT

## CDL7 series

### ORDERING INFORMATION

Model	Product dimensions	Weight	Pcs. Per carton	Carton size	Carton weight	UPC	GTIN 14
<b>CDL7</b>							
ASD-CDL7-4DA13AC	5-3/8" x 5-3/8" x 2-3/4"	0.6 lbs(0.3kg)	8	13.07" x 12.83" x 8.74"	7.3 lbs	81005073612	30810050736122
ASD-CDL7-6DA22AC	8-1/4" x 8-1/4" x 3-7/16"	1.0 lbs(0.4kg)	4	18.70" x 9.76" x 9.53"	6.6 lbs	81005073602	10810050736029
ASD-CDL7-6DA22AC-BK	8-1/4" x 8-1/4" x 4"	1.5 lbs(0.7kg)	8	19.09" x 18.11" x 10.04"	15.7 lbs	81005073944	10810050739440
ASD-CDL7-8DA30AC	10-1/16" x 10-1/16" x 3-7/16"	1.1 lbs(0.5kg)	4	21.85" x 11.34" x 10.31"	9.0 lbs	81005073603	10810050736036
ASD-CDL7-8DA30AC-BK	10-1/4" x 10-1/4" x 4-7/16"	1.8 lbs(0.8kg)	4	18.90" x 11.42" x 11.61"	9.1 lbs	81005073945	10810050739457
ASD-CDL7-10DA40AC	11-7/16" x 11-7/16" x 4-5/16"	1.3 lbs(0.6kg)	4	25.39" x 13.07" x 12.28"	11.2 lbs	81005073604	10810050736043
ASD-CDL7-10DA40AC-BK	11-5/16" x 11-5/16" x 4-15/16"	2.4 lbs(1.1kg)	4	23.62" x 12.60" x 12.99"	12.1 lbs	81005073983	10810050739839
<b>CDL7 WITH BATTERY BACK-UP</b>							
ASD-CDL7-6DA22-8EM	8-1/4" x 8-1/4" x 3-7/16"	2.5 lbs(1.1kg)	4	22.76" x 12.13" x 11.73"	13.2 lbs	81019020263	10810190202637
ASD-CDL7-8DA30-8EM	10-1/16" x 10-1/16" x 3-7/16"	3.0 lbs(1.4kg)	4	23.15" x 12.13" x 11.26"	14.3 lbs	81019020375	10810190203757
<b>CDL7 WITH MOTION SENSOR</b>							
ASD-CDL7-6A22WH-MS	8-1/4" x 8-1/4" x 3-11/16"	1.0 lbs(0.4kg)	4	18.90" x 9.65" x 10.71"	7.1 lbs	81019020259	10810190202590
ASD-CDL7-8A30WH-MS	10-1/16" x 10-1/16" x 3-11/16"	1.3 lbs(0.6kg)	4	21.85" x 11.34" x 11.50"	8.6 lbs	81019020260	10810190202606

### ACCESSORIES:

Model	Description	UPC	Pcs. per carton	Carton size	Carton weight	GTIN 14 in carton
BLD-HM08D	Battery back-up kit 8W	810128111508	10	17.1" x 14.6" x 11"	19.6 lbs	10810128111505
BLD-HM15D	Battery back-up kit 15W	810050734882	10	17.8" x 13.5" x 9.5"	25.1 lbs	10810050734889
ASD-MPLR-346-FA-6PACK	New construction flat mounting plate with asymmetric round holes 3-4-6"	810050739344	4	14.4" x 9.8" x 3.2"	18.1 lbs	10810050739341
ASD-MPLR18-346-FA-6PACK	New construction flat mounting plate 18" with asymmetric round holes 3-4-6"	810128112826	4	18.9" x 9.8" x 3.2"	32.9 lbs	10810128112823
ASD-MPLR-81012-FA-6PACK	New construction flat mounting plate with asymmetric round holes 8-10-12"	810128111553	4	19.5" x 14.2" x 3.2"	37.2 lbs	10810128111550
ASD-MPLR-346-FS-6PACK	New construction flat mounting plate with symmetric round holes 3-4-6"	810050739351	4	27" x 9.1" x 3.2"	21 lbs	10810050739358
ASD-MPLR-81012-FS-6PACK	New construction flat mounting plate with symmetric round holes 8-10-12"	810128111577	4	27" x 13.8" x 3.2"	42.3 lbs	10810128111574
ASD-MPLR-346-SC-6PACK	New construction mounting plate with round holes and sliding clips 3-4-6"	810050739337	2	17.3" x 11.9" x 13.4"	17 lbs	10810050739334
ASD-MPLR-81012-SC-6PACK	New construction mounting plate with round holes and sliding clips 8-10-12"	810128111607	2	21.3" x 17.5" x 15.6"	24 lbs	10810128111604

### ANNEX 1

Model	Watts	2,700 K	3,000 K	3,500 K	4,000 K	5,000 K
ASD-CDL7-4DA13AC	7 W	588 lm	624 lm	649 lm	655 lm	632 lm
	13 W	978 lm	1,033 lm	1,076 lm	1,090 lm	1,053 lm
	10 W	786 lm	850 lm	898 lm	909 lm	852 lm
ASD-CDL7-6DA22AC	12 W	957 lm	1,012 lm	1,056 lm	1,078 lm	1,083 lm
	14 W	1,101 lm	1,170 lm	1,227 lm	1,250 lm	1,226 lm
	16 W	1,248 lm	1,309 lm	1,375 lm	1,400 lm	1,363 lm
	18 W	1,374 lm	1,473 lm	1,557 lm	1,584 lm	1,533 lm
	20 W	1,507 lm	1,624 lm	1,730 lm	1,788 lm	1,726 lm
ASD-CDL7-6DA22AC-BK	10 W	822 lm	830 lm	842 lm	833 lm	924 lm
	15 W	1,219 lm	1,227 lm	1,242 lm	1,243 lm	1,384 lm
	22 W	1,559 lm	1,601 lm	1,643 lm	1,602 lm	1,640 lm
ASD-CDL7-8DA30AC	14 W	1,156 lm	1,206 lm	1,258 lm	1,279 lm	1,267 lm
	18 W	1,420 lm	1,495 lm	1,571 lm	1,602 lm	1,576 lm
	22 W	1,686 lm	1,781 lm	1,886 lm	1,922 lm	1,860 lm
	26 W	1,940 lm	2,022 lm	2,155 lm	2,202 lm	2,114 lm
	30 W	2,247 lm	2,446 lm	2,567 lm	2,622 lm	2,507 lm
ASD-CDL7-8DA30AC-BK	12 W	1,084 lm	1,119 lm	1,160 lm	1,177 lm	1,189 lm
	20 W	1,707 lm	1,765 lm	1,836 lm	1,851 lm	1,818 lm
	30 W	2,440 lm	2,514 lm	2,630 lm	2,640 lm	2,400 lm
ASD-CDL7-10DA40AC	20 W	1,697 lm	1,808 lm	1,900 lm	1,909 lm	1,939 lm
	25 W	2,055 lm	2,198 lm	2,289 lm	2,412 lm	2,365 lm
	30 W	2,362 lm	2,542 lm	2,658 lm	2,730 lm	2,725 lm
	35 W	2,632 lm	2,851 lm	2,996 lm	3,100 lm	3,042 lm
	40 W	2,960 lm	3,165 lm	3,349 lm	3,456 lm	3,445 lm

Model	Watts	2,700 K	3,000 K	3,500 K	4,000 K	5,000 K
ASD-CDL7-10DA40AC-BK	20 W	1,637 lm	1,744 lm	1,833 lm	1,842 lm	1,871 lm
	30 W	2,279 lm	2,453 lm	2,564 lm	2,634 lm	2,629 lm
	40 W	3,368 lm	3,457 lm	3,448 lm	3,445 lm	3,302 lm
ASD-CDL7-6DA22-8EM	12 W	957 lm	1,012 lm	1,056 lm	1,078 lm	1,083 lm
	14 W	1,101 lm	1,170 lm	1,227 lm	1,250 lm	1,226 lm
	16 W	1,248 lm	1,309 lm	1,375 lm	1,400 lm	1,363 lm
	18 W	1,374 lm	1,473 lm	1,557 lm	1,584 lm	1,533 lm
	20 W	1,507 lm	1,624 lm	1,730 lm	1,788 lm	1,726 lm
ASD-CDL7-8DA30-8EM	14 W	1,156 lm	1,206 lm	1,258 lm	1,279 lm	1,267 lm
	18 W	1,420 lm	1,495 lm	1,571 lm	1,602 lm	1,576 lm
	22 W	1,686 lm	1,781 lm	1,886 lm	1,922 lm	1,860 lm
	26 W	1,902 lm	2,022 lm	2,155 lm	2,202 lm	2,114 lm
ASD-CDL7-6A22WH-MS	30 W	2,120 lm	2,307 lm	2,421 lm	2,473 lm	2,365 lm
	12 W	957 lm	1,012 lm	1,056 lm	1,078 lm	1,083 lm
	14 W	1,101 lm	1,170 lm	1,227 lm	1,250 lm	1,226 lm
	16 W	1,248 lm	1,309 lm	1,375 lm	1,400 lm	1,363 lm
	18 W	1,374 lm	1,473 lm	1,557 lm	1,584 lm	1,533 lm
ASD-CDL7-8A30WH-MS	20 W	1,507 lm	1,624 lm	1,730 lm	1,788 lm	1,726 lm
	14 W	1,156 lm	1,206 lm	1,258 lm	1,279 lm	1,267 lm
	18 W	1,420 lm	1,495 lm	1,571 lm	1,602 lm	1,576 lm
	22 W	1,686 lm	1,781 lm	1,886 lm	1,922 lm	1,860 lm
	30 W	2,247 lm	2,446 lm	2,567 lm	2,622 lm	2,507 lm

For most up-to-date spec sheets please refer to [asd-lighting.com](http://asd-lighting.com)

