



# PLUG-IN BATTERY BACK-UP KIT FOR WAFERS

## BATTERY FOR WAFERS

- ▶ **DESIGN** - PLUG-IN BATTERY BACK-UP KIT FOR WAFERS uses a durable lithium-ferrophosphate battery that delivers constant output power, allowing the fixture to operate for more than 90 minutes in emergency mode during a power outage. Its quick installation is achieved through plug-in connection, allowing the unit to connect directly to the DC input and minimizing installation steps.
- ▶ **PROTECTIONS** - Batteries are equipped with overcharge, over-discharge, short-circuit, overload and open-load protections that ensure stable and durable operation.
- ▶ **VARIETY** - Compatible with TRIAC and 0–10 V dimmable fixtures. Provides plug-in connection using an FT1 cable for standard fixtures and an FT6 cable for fire-rated fixtures. Two selector buttons with five positions each allow precise adjustment of output current and color temperature to match the requirements of the connected fixture.
- ▶ **APPLICATION** - IP44 residential housing is suitable for damp locations and designed for wafers with TRIAC or 0–10 V dimming.
- ▶ **ADVANTAGES** - Long lifespan - these batteries meet 500 cycles of standard charge and discharge. ASD provides a 5-year warranty with UL certification to guarantee top quality products and safety!



### PRODUCT PRESENTATION:

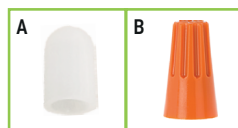
| Model       | Power | Voltage  | Dimming      | Finish | Dimensions                   | Certification |
|-------------|-------|----------|--------------|--------|------------------------------|---------------|
| ASD-EMK-JBR | 3.5 W | 120-347V | 0-10V, TRIAC | White  | 9-15/16" x 2-13/16" x 1-3/8" | UL(E495654)   |

### TECHNICAL PARAMETERS:

| Model       | Max input current | Work environment | Operating temperature        | Power factor | Surge protection | Material |
|-------------|-------------------|------------------|------------------------------|--------------|------------------|----------|
| ASD-EMK-JBR | 0.2A              | Damp location    | -4°F to 113°F(-20°C to 45°C) | >0.9         | 2kV              | Iron     |

### PACKAGE CONTENTS:

| Description         | Quantity |
|---------------------|----------|
| Battery back-up kit | 1        |
| Silicone plug (A)   | 1        |
| Wire nuts (B)       | 6        |
| Box                 | 1        |



### COMPATIBILITY TABLE:

| Size and power | Series    | Cable | mA  |
|----------------|-----------|-------|-----|
| 3inch 6 W      | JBR       | FT1   | 160 |
| 4inch 9 W      | JBRB      |       | 200 |
| 4inch 12 W     | JBR, JBRB |       | 280 |
| 6inch 12 W     | JBR, JBRB |       | 280 |
| 6inch 15 W     | JBR, JBRB |       | 240 |
| 8inch 20 W     | JBR       |       | 320 |
| 12inch 24 W    | JBR       |       | 320 |
| 4inch 12 W     | JFR, JFRB | FT6   | 280 |
| 6inch 15 W     | JFR, JFRB |       | 240 |
| 8inch 20 W     | JFR       |       | 320 |

## ORDERING INFORMATION

| Model       | Product dimensions           | Weight         | Pcs. Per carton | Carton size             | Carton weight | UPC         | GTIN 14        |
|-------------|------------------------------|----------------|-----------------|-------------------------|---------------|-------------|----------------|
| ASD-EMK-JBR | 9-15/16" x 2-13/16" x 1-3/8" | 1.3 lbs(0.6kg) | 12              | 11.30" x 6.30" x 11.42" | 19.8 lbs      | 81019020264 | 10810190202644 |

For most up-to-date spec sheets please refer to [asd-lighting.com](http://asd-lighting.com)





# PLUG-IN BATTERY BACK-UP KIT FOR WAFERS

## BATTERY FOR WAFERS

### ⚠ WARNING

**RISK OF PERSONAL INJURY – READ and follow all WARNINGS and installation instructions.** Keep or give to the owner for future reference.

**Risk of cuts:** Wear gloves to prevent cuts or abrasions when removing from carton, handling, installing, and maintaining this product.

**Risk of electric shock:** This product must be installed in accordance with the applicable installation code by a person familiar with the construction and operation of the product and the hazards involved.

**Risk of Fire:** Minimum 194°F supply conductors. Consult a qualified electrician to ensure correct branch circuit conductor.

ASD® assumes no responsibility for claims arising out of improper or careless Installation or handling of this product.

### USAGE / OPERATION

**Important:** Please charge the battery for more than 24 hours on first use to activate all battery cells and ensure normal charge/discharge duration.

| Button | Remarks         |
|--------|-----------------|
|        | ON Charging     |
|        | OFF Discharging |
|        | OFF Fault       |

- Charging (AC power ON): Red indicator ON.
- Discharging / Emergency Mode (AC power OFF): Red indicator OFF.
- Emergency power failure: fixture does not operate when emergency supply fails.

### SWITCH TEST PROCEDURE:

1. When the main power supply is connected and the unit is in normal mode, press the test button to switch to emergency mode.
2. If the test button is not pressed, the unit remains in charging mode.
3. In emergency mode, press and hold the test button for 3 seconds to exit emergency mode. Battery maintenance: charge-discharge at least once every three months to maintain battery life. Do not leave the battery idle or continuously charging for more than 6 months.

### INSTALLATION STEPS:

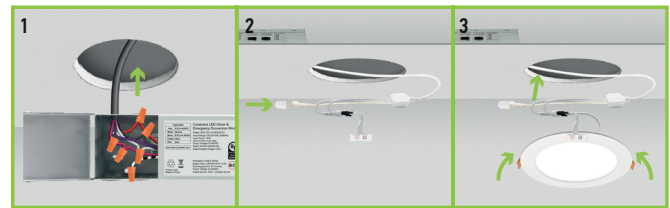
1. Turn off power before installation and remove any existing fixtures. Open the emergency power supply cover, remove the required knockout on the side panel, install a suitable cable clamp (not included), feed the power cable through it, and connect the wires.

**For 0-10V dimming:** red to red, black to black, white to white, purple to purple, pink to pink. Cap the black & white wire.

**For Triac dimming:** red to red, white to white, black & white to black & white. Cap the purple, pink and black wires.

2. Insert the emergency power supply into the mounting hole and secure it. The hole must be larger than 3-1/8 inches or the unit will not fit. Connect the fixture power cable to the emergency power supply.

3. Remove the adhesive backing from the indicator light and attach it to the fixture surface. Push the spring clips in to the mounting hole and insert the fixture; it will sit flush with the ceiling. Restore power and press the test switch to verify operation.



### RECOMMENDED TRIAC DIMMER:

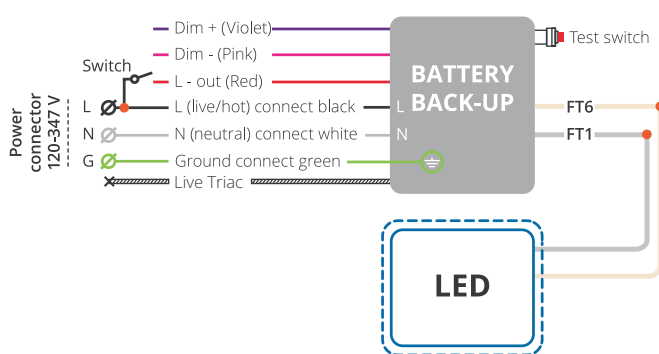
| Lutron         |             |             |             | Leviton   |            |
|----------------|-------------|-------------|-------------|-----------|------------|
| CTCL-153PDH-WH | MSCL-OP153M | S2-LFSQH-WH | DVWCL-153PH | CTCL-150H | 6672 DSL06 |
| TGCL-153PH-LA  | PD-6WCL     | CT-103PR-WH | RCL-153RNL  |           | 6674       |
| DVCL-153P      | S2-LFSQH-WH | MACL-153MR  | DVRF-6L     |           | RNL06      |

### RECOMMENDED 0-10V DIMMER:

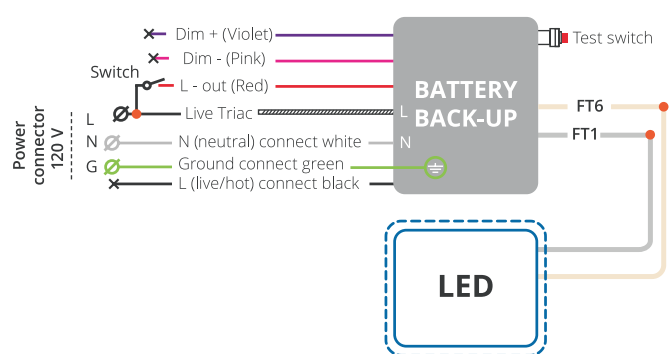
| Lutron   | Lntertek     | Leviton     |
|----------|--------------|-------------|
| DVSTV-WH | DECOR DIMMER | KGM-1A010AV |
|          |              | IP710       |

### WIRING DIAGRAM:

WIRING DIAGRAM (0-10V DIMMABLE/120-347VAC)



WIRING DIAGRAM (120VAC TRIAC DIMMABLE)



For most up-to-date spec sheets please refer to [asd-lighting.com](http://asd-lighting.com)

