



RECESSED BATTERY BACK-UP KIT

EMK13 series

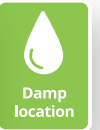
DESIGN: RECESSED BATTERY BACK-UP KIT for ceiling-mounted and flushmount fixtures includes a recessed metal junction box with integrated mounting rails for secure installation above the ceiling. The durable lithium-ion battery provides constant output power, allowing the fixture to operate for more than 90 minutes in emergency mode during a power outage. The unit connects directly to the DC input of the fixture.

PROTECTIONS: Batteries are equipped by over charge protection, over discharge protection, short circuit protection, output overload and open load protections that ensure stable durable operation.

EMERGENCY STATUS & TESTING: A built-in test switch and status LED give on-demand verification of emergency operation and clear visual feedback on charging/discharging states. This enables quick functional checks and simple diagnostics while the unit remains installed.

APPLICATION: The EM-Kit is intended primarily as a recessed emergency power solution for indoor ceiling-mounted lighting systems. It is suitable for flushmount fixtures where a concealed, built-in emergency battery back-up is required. The unit is Damp location rated.

ADVANTAGES: Long lifespan – these batteries meet 500 cycles of standard charge and discharge. ASD provides a 5-year warranty with UL certification to guarantee high-quality and safe products.



PRODUCT PRESENTATION

MODEL	POWER	VOLTAGE	FINISH	DIMENSIONS	CERTIFICATION
ASD-EMK13	13W	120V	Gray	8-1/2" x 5-1/8" x 3-3/8"	UL(E495654)

TECHNICAL PARAMETERS

MODEL	WORK ENVIRONMENT	OPERATING TEMPERATURE	SURGE PROTECTION	HOUSING
ASD-EMK13	Damp location	-4°F to 113°F(-20°C to 45°C)	2kV	Iron

ORDERING INFORMATION

MODEL	PRODUCT DIMENSIONS	WEIGHT	PCS. PER CARTON	CARTON SIZE	CARTON WEIGHT	UPC	GTIN 14
ASD-EMK13	8-1/2" x 5-1/8" x 3-3/8"	2.3 lbs(1.0kg)	6	15.91" x 9.72" x 7.09"	16.5 lbs	81019020197	10810190201975

For most up-to-date spec sheets please refer to asd-lighting.com

ASD LIGHTING CORP | www.asd-lighting.com | orders@asd-lighting.com



IMPORTANT OPERATIONAL INSTRUCTIONS / PRECAUTIONS

- Emergency lighting fixtures must be installed by qualified personnel; power should be applied only after proper wiring connections are made.
- Ensure all wires are connected, and the battery must be connected before supplying mains power.
- When working with wiring during battery discharge, always disconnect the battery first to avoid hazardous live output voltage - this may cause a short circuit and electric shock.
- After connecting the circuit to mains, press the test switch - this will switch the entire fixture from normal charging (or normal lighting mode) into emergency mode. After releasing the switch, the lamp will automatically return to charging mode.

USAGE / OPERATION

BUTTON	REMARKS
	ON Charging
	OFF Discharging
	OFF Fault

- Charging / AC Power ON: Red indicator ON.
- Discharging / Emergency Mode/ AC Power OFF: Red indicator OFF.
- Emergency power supply failure/ AC Power OFF: Fixture does not operate.

Important: Please charge the battery for more than 24 hours on first use to activate all battery cells and ensure normal charge/discharge duration.

INSTALLATION GUIDE

IMPORTANT SAFETY INFORMATION

- Make sure that the supply voltage corresponds to the rated product voltage.
- The product must be installed by a qualified electrician in accordance with the National Electrical Code and corresponding local codes.
- If the product is damaged, do not use it.

WARNING

Risk of personal injury: read and follow all warnings and installation instructions. Keep or give to the owner for future reference.

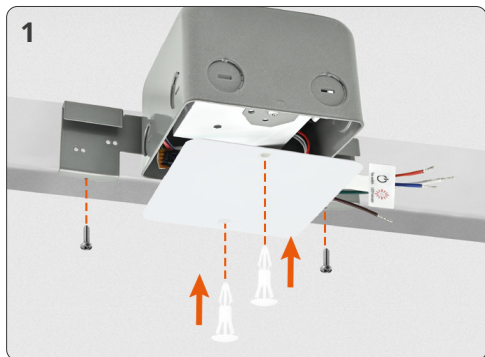
Risk of cuts: Wear gloves to prevent cuts or abrasions when removing from carton, handling, installing, and maintaining this product.

Risk of electric shock: This product must be installed in accordance with the applicable installation code by a person familiar with the construction and operation of the product and the hazards involved.

Risk of Fire: Minimum 194°F supply conductors. Consult a qualified electrician to ensure correct branch circuit conductor.

ASD® assumes no responsibility for claims arising out of improper or careless installation or handling of this product.

INSTALLATION STEPS



- Turn off the power (and circuit breaker). Mount the emergency power unit to the beam and secure it with screws. Insert the plastic plug into the 2.75" hole in the J-Box and secure it — this protects against dust during painting/plastering. After finishing, cut off the plastic screws and remove the cover.



- Connect the three wires of the emergency power unit to the mains and secure them inside the junction box. Install the test switch on the edge of the fixture, then connect the EM wires to the fixture wires: blue to white, brown to black, green to ground. Attach the fixture with two screws (max weight: 4.8 kg), ensuring it is flush with the ceiling.

Please read all the instructions below before installation!

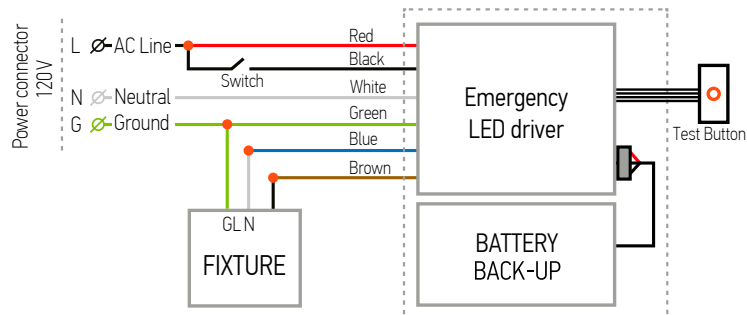
ADDITIONAL NOTES

- Do not use outdoors.
- Do not install near gas or electric heaters.
- Equipment should be installed in locations and at heights where it will not be tampered with by unauthorized persons.
- Use of auxiliary equipment not recommended by the manufacturer may create an unsafe condition.
- Do not use this equipment for purposes other than intended.
- Use with grounded, certified (UL Listed) fixtures intended for dry or damp location; the housing must be grounded.
- The equipment is intended for ordinary locations and for permanent installation in one or more specified emergency luminaires.

SWITCH TEST

- When mains power is connected and in normal state, press the test switch - the emergency kit will enter emergency mode.
- If the test switch is not pressed, the device will remain in charging mode.
- In emergency mode, holding the test switch for 3 seconds will exit emergency mode.

WIRING DIAGRAM BATTERY BACK-UP KIT



PACKAGE CONTENTS

DESCRIPTION	QUANTITY
Battery back-up kit	1
J-Box (A)	1
Plastic cover (B)	1
Plastic screws (C)	2
Wire nuts (D)	6
Box	1



- Reinstall the cover/lens by turning it back in to place. Turn on the power and press the test switch to verify operation.