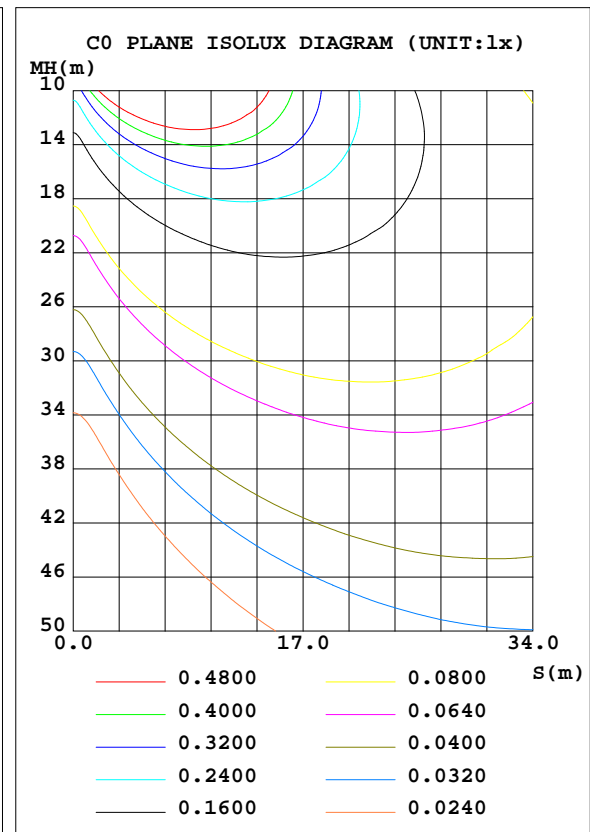
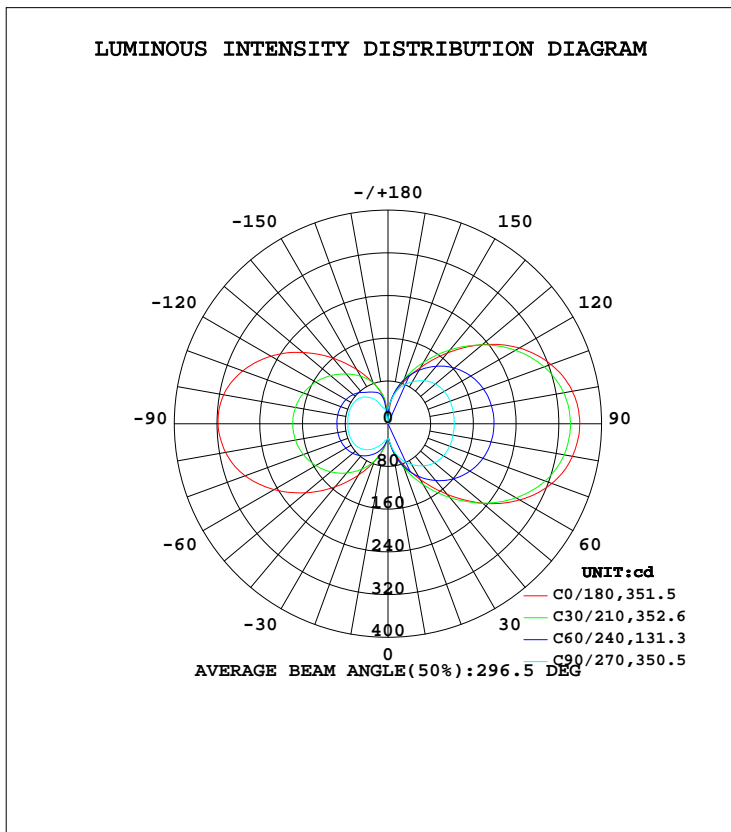


LUMINAIRE PHOTOMETRIC TEST REPORT

Test:U:120.0V I:0.2106A P:24.97W PF:0.9879 Freq:60.00Hz Lamp Flux:1977.11x1 lm		
NAME:ASD-LWS27N-24D24BK	TYPE:LED	WEIGHT:
SPEC.:5000K	DIM.:	SERIAL No.:
MFR.: ASD Lighting Corp	SUR.:	Shielding Angle:

DATA OF LAMP		PHOTOMETRIC DATA Eff: 79.18 lm/W			
MODEL	ASD-LWS27N-24D24BK	I _{max} (cd)	376.6	S/MH(C0/180)	4.77
NOMINAL POWER(W)	24	LOR(%)	100.0	S/MH(C90/270)	2.80
RATED VOLTAGE(V)	120-277	TOTAL FLUX(lm)	1977.1	η UP, DN(C0-180)	30.6,30.2
NOMINAL FLUX(lm)	1977.11	CIE CLASS	DIFFUSE	η UP, DN(C180-360)	19.7,19.6
LAMPS INSIDE	1	η up(%)	50.2	CIBSE SHR NOM	1.50
TEST VOLTAGE(V)	120	η down(%)	49.8	CIBSE SHR MAX	1.55



C Range: 0 - 360DEG
 C Interval: 15.0DEG
 Test Speed: HIGH
 Temperature: 25.0DEG
 Operators: Alan Wang
 Test Date: 15 December 2023

γ Range: 0 - 180DEG
 γ Interval: 1.0DEG
 Test System: EVERFINE GO-R5000_V2 SYSTEM V2.00.416
 Humidity: 42.7%
 Test Distance: 2.500m [K=1.0423]
 Remarks:

ZONAL FLUX DIAGRAM

ZONAL FLUX DIAGRAM:

γ	C0	C45	C90	C135	C180	C225	C270	C315	γ	Φ zone	Φ total	%lum,lamp
10	48.66	51.49	47.14	50.70	46.72	45.52	31.98	46.12	0- 10	3.649	3.649	0.18,0.18
20	79.31	88.77	70.33	85.63	75.40	65.83	42.82	64.09	10- 20	17.19	20.83	1.05,1.05
30	120.2	125.8	87.96	117.8	111.2	82.42	53.76	78.18	20- 30	39.66	60.50	3.06,3.06
40	172.6	160.7	103.0	147.3	154.3	96.63	63.54	90.66	30- 40	70.06	130.6	6.6,6.6
50	231.7	190.9	113.8	173.1	201.4	108.5	70.34	101.6	40- 50	106.4	236.9	12,12
60	285.2	214.6	120.1	193.9	246.7	117.9	73.95	110.4	50- 60	144.5	381.4	19.3,19.3
70	326.8	232.1	123.0	209.3	284.8	124.3	75.37	116.5	60- 70	179.0	560.4	28.3,28.3
80	350.8	242.0	123.7	219.3	308.8	127.8	75.51	120.3	70- 80	204.9	765.3	38.7,38.7
90	359.1	245.7	124.2	223.1	318.1	129.3	75.13	121.9	80- 90	218.7	984.0	49.8,49.8
100	350.8	242.3	124.3	221.5	312.4	128.5	76.02	121.6	90-100	219.4	1203	60.9,60.9
110	324.7	232.5	124.0	213.8	289.6	125.0	76.41	118.4	100-110	206.4	1410	71.3,71.3
120	284.1	215.4	121.8	200.0	253.2	118.6	75.64	111.4	110-120	180.8	1591	80.5,80.5
130	230.8	191.6	116.0	179.8	207.8	109.5	73.02	100.5	120-130	146.2	1737	87.8,87.8
140	173.2	161.4	105.3	153.8	160.6	98.13	65.71	89.89	130-140	107.9	1845	93.3,93.3
150	121.7	127.7	90.56	124.6	117.4	86.37	53.79	76.96	140-150	71.24	1916	96.9,96.9
160	81.75	91.28	74.20	91.19	81.77	74.62	34.88	59.14	150-160	40.58	1957	99,99
170	51.74	53.92	50.76	54.77	52.52	52.74	16.85	34.24	160-170	17.69	1974	99.9,99.9
180	0	0	27.51	0	0.1081	0.1508	0.1883	0.1598	170-180	2.864	1977	100,100
DEG	LUMINOUS INTENSITY:cd									UNIT:lm		

Conical surface Flux(90deg): 178.97 lm

%lum = 9.1%

%lamp = 9.1%

Conical surface Flux(120deg): 381.4 lm

%lum = 19.3%

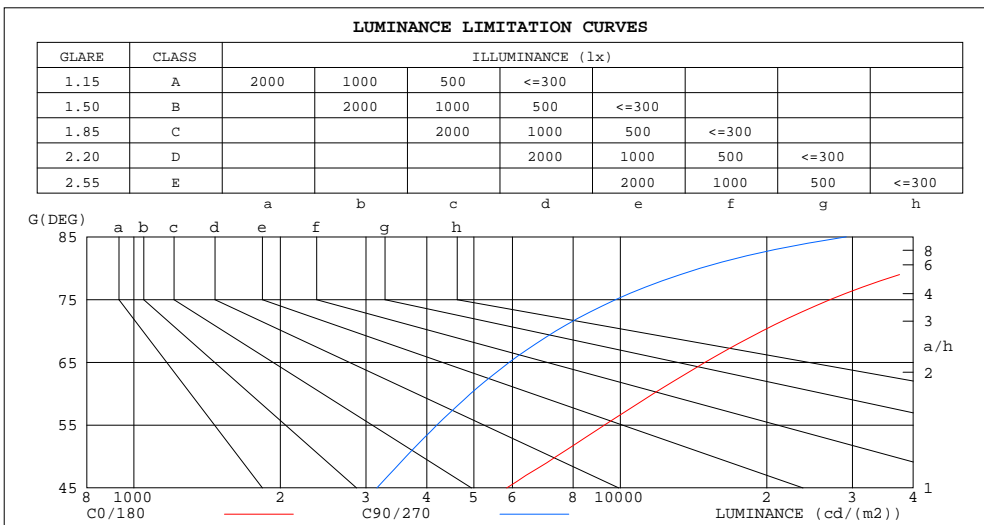
%lamp = 19.3%

C Range: 0 - 360DEG
 C Interval: 15.0DEG
 Test Speed: HIGH
 Temperature: 25.0DEG
 Operators: Alan Wang
 Test Date: 15 December 2023

γ Range: 0 - 180DEG
 γ Interval: 1.0DEG
 Test System: EVERFINE GO-R5000_V2 SYSTEM V2.00.416
 Humidity: 42.7%
 Test Distance: 2.500m [K=1.0423]
 Remarks:

LUMINANCE LIMITATION CURVES

Test:U:120.0V I:0.2106A P:24.97W PF:0.9879 Freq:60.00Hz Lamp Flux:1977.11x1 lm		
NAME:	TYPE:LED	WEIGHT:
SPEC.:ASD-LWS27N-24D24BK_5000K	DIM.:	SERIAL No.:
MFR.: ASD Lighting Corp	SUR.:	Shielding Angle:



LUMINANCE cd/(m2)		
G(DEG)	C0/180	C90/270
85	83841	29132
80	41403	14595
75	27011	9782
70	19578	7368
65	14932	5910
60	11689	4921
55	9276	4198
50	7388	3629
45	5842	3158

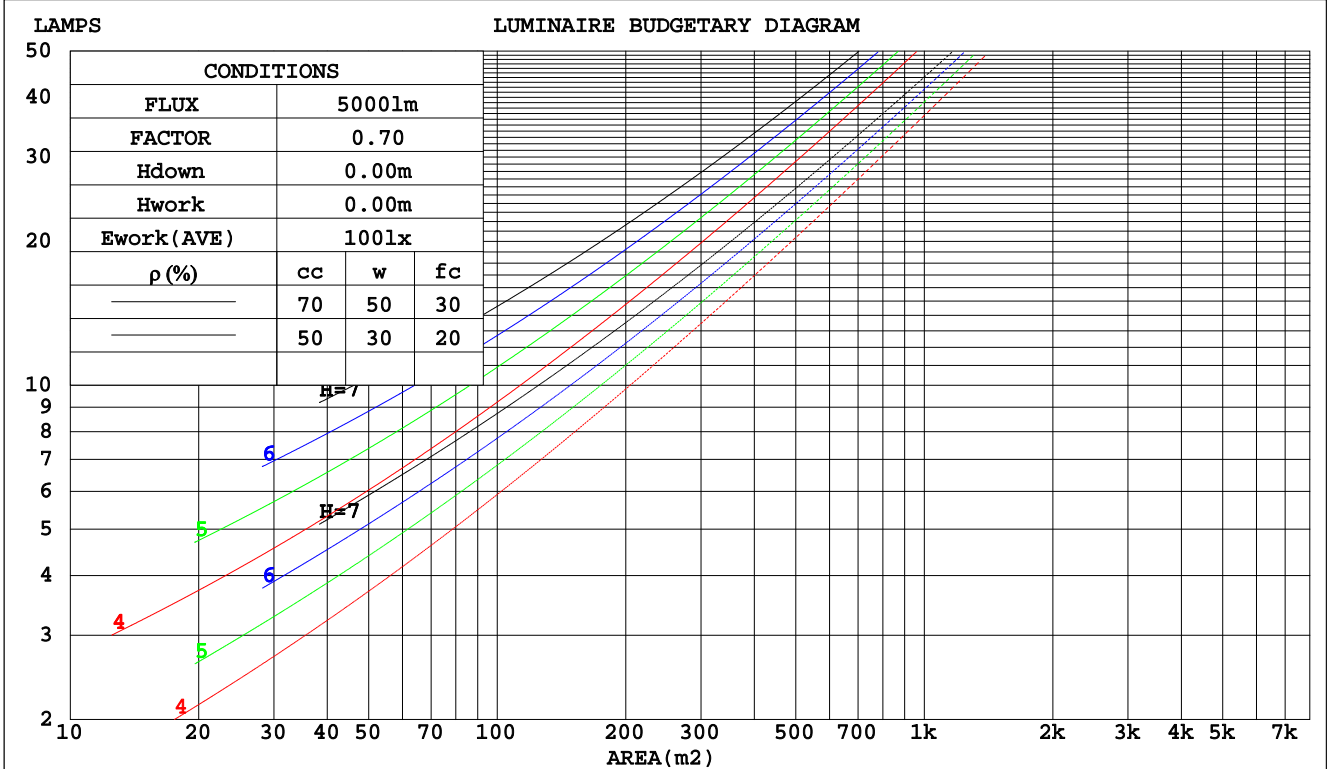
C Range: 0 - 360DEG
 C Interval: 15.0DEG
 Test Speed: HIGH
 Temperature: 25.0DEG
 Operators: Alan Wang
 Test Date: 15 December 2023

γ Range: 0 - 180DEG
 γ Interval: 1.0DEG
 Test System: EVERFINE GO-R5000_V2 SYSTEM V2.00.416
 Humidity: 42.7%
 Test Distance: 2.500m [K=1.0423]
 Remarks:

CU AND LUMINAIRE BUDGETARY ESTIMATE DIAGRAM

Test:U:120.0V I:0.2106A P:24.97W PF:0.9879 Freq:60.00Hz Lamp Flux:1977.11x1 lm		
NAME:	TYPE:LED	WEIGHT:
SPEC.:ASD-LWS27N-24D24BK_5000K	DIM.:	SERIAL No.:
MFR.: ASD Lighting Corp	SUR.:	Shielding Angle:

pcc	80%			70%			50%			30%			10%			0
	50%	30%	10%	50%	30%	10%	50%	30%	10%	50%	30%	10%	50%	30%	10%	0
pw																0
pfc	20%			20%			20%			20%			20%			0
RCR	RCR:Room Cavity Ratio						Coefficients of Utilization(CU)									
0.0	1.07	1.07	1.07	.99	.99	.99	.83	.83	.83	.69	.69	.69	.56	.56	.56	.50
1.0	.85	.79	.74	.78	.73	.68	.64	.60	.57	.52	.49	.46	.40	.38	.36	.30
2.0	.71	.63	.56	.65	.58	.51	.53	.48	.43	.42	.38	.34	.32	.29	.26	.21
3.0	.61	.52	.44	.56	.47	.40	.45	.39	.33	.36	.31	.26	.27	.23	.20	.15
4.0	.53	.43	.36	.48	.39	.33	.39	.32	.27	.31	.26	.21	.23	.19	.16	.12
5.0	.46	.37	.29	.42	.34	.27	.34	.27	.22	.27	.22	.17	.20	.16	.13	.09
6.0	.41	.32	.25	.37	.29	.23	.30	.24	.19	.24	.19	.15	.18	.14	.11	.07
7.0	.37	.28	.21	.33	.25	.19	.27	.21	.16	.22	.16	.12	.16	.12	.09	.06
8.0	.33	.24	.18	.30	.22	.17	.25	.18	.14	.19	.14	.11	.15	.11	.08	.05
9.0	.30	.21	.16	.27	.20	.15	.22	.16	.12	.18	.13	.09	.13	.09	.07	.04
10.0	.27	.19	.14	.25	.18	.13	.20	.15	.10	.16	.11	.08	.12	.09	.06	.04



C Range: 0 - 360DEG
 C Interval: 15.0DEG
 Test Speed: HIGH
 Temperature: 25.0DEG
 Operators: Alan Wang
 Test Date: 15 December 2023

γ Range: 0 - 180DEG
 γ Interval: 1.0DEG
 Test System: EVERFINE GO-R5000_V2 SYSTEM V2.00.416
 Humidity: 42.7%
 Test Distance: 2.500m [K=1.0423]
 Remarks:

WEC AND CCEC

Test:U:120.0V I:0.2106A P:24.97W PF:0.9879 Freq:60.00Hz Lamp Flux:1977.11x1 lm		
NAME:	TYPE:LED	WEIGHT:
SPEC.:ASD-LWS27N-24D24BK_5000K	DIM.:	SERIAL No.:
MFR.: ASD Lighting Corp	SUR.:	Shielding Angle:

ρcc	80%			70%			50%			30%			10%			0
ρw	50%	30%	10%	50%	30%	10%	50%	30%	10%	50%	30%	10%	50%	30%	10%	0
ρfc	20%			20%			20%			20%			20%			0
RCR	RCR:Room Cavity Ratio						Wall Exitance Coefficients(WEC)									
0.0																
1.0	.434	.247	.078	.412	.235	.075	.370	.212	.068	.331	.191	.061	.295	.171	.055	
2.0	.358	.196	.060	.337	.186	.057	.299	.166	.052	.263	.148	.046	.230	.130	.041	
3.0	.310	.165	.049	.291	.156	.047	.256	.138	.042	.223	.122	.037	.192	.107	.033	
4.0	.274	.142	.042	.257	.134	.040	.224	.119	.036	.194	.104	.031	.166	.090	.028	
5.0	.246	.126	.036	.231	.118	.034	.201	.104	.031	.173	.091	.027	.147	.078	.024	
6.0	.224	.112	.032	.209	.106	.030	.182	.093	.027	.156	.081	.024	.132	.069	.021	
7.0	.205	.101	.029	.192	.095	.027	.166	.084	.024	.142	.073	.021	.120	.062	.018	
8.0	.189	.092	.026	.177	.087	.025	.153	.076	.022	.131	.066	.019	.110	.056	.016	
9.0	.175	.085	.024	.164	.080	.022	.142	.070	.020	.121	.061	.017	.101	.051	.015	
10.0	.164	.078	.022	.153	.074	.021	.132	.065	.018	.113	.056	.016	.094	.047	.014	

ρcc	80%			70%			50%			30%			10%			0
ρw	50%	30%	10%	50%	30%	10%	50%	30%	10%	50%	30%	10%	50%	30%	10%	0
ρfc	20%			20%			20%			20%			20%			0
RCR	RCR:Room Cavity Ratio						Ceiling Cavity Exitance Coefficients(CCEC)									
0.0	.573	.573	.573	.490	.490	.490	.334	.334	.334	.192	.192	.192	.061	.061	.061	
1.0	.575	.541	.510	.492	.464	.439	.336	.319	.304	.194	.185	.177	.062	.059	.057	
2.0	.570	.520	.478	.488	.448	.414	.334	.310	.288	.193	.180	.169	.062	.058	.055	
3.0	.563	.505	.459	.482	.436	.398	.331	.303	.279	.191	.177	.165	.061	.057	.054	
4.0	.555	.494	.447	.476	.427	.388	.328	.297	.273	.190	.174	.162	.061	.057	.053	
5.0	.548	.485	.438	.470	.419	.381	.324	.293	.269	.188	.172	.160	.060	.056	.053	
6.0	.540	.478	.432	.465	.414	.377	.320	.290	.266	.186	.170	.158	.060	.056	.052	
7.0	.533	.472	.428	.459	.409	.373	.317	.287	.264	.184	.169	.157	.060	.055	.052	
8.0	.527	.466	.425	.454	.405	.370	.314	.284	.263	.183	.168	.157	.059	.055	.052	
9.0	.521	.462	.422	.449	.401	.368	.311	.282	.262	.181	.166	.156	.059	.055	.052	
10.0	.515	.458	.420	.444	.398	.367	.308	.280	.261	.180	.165	.155	.058	.054	.052	

C Range: 0 - 360DEG
 C Interval: 15.0DEG
 Test Speed: HIGH
 Temperature: 25.0DEG
 Operators: Alan Wang
 Test Date: 15 December 2023

γ Range: 0 - 180DEG
 γ Interval: 1.0DEG
 Test System: EVERFINE GO-R5000_V2 SYSTEM V2.00.416
 Humidity: 42.7%
 Test Distance: 2.500m [K=1.0423]
 Remarks:

UGR(Unified Glare Rating) Table

Test:U:120.0V I:0.2106A P:24.97W PF:0.9879 Freq:60.00Hz Lamp Flux:1977.11x1 lm		
NAME:	TYPE:LED	WEIGHT:
SPEC.:ASD-LWS27N-24D24BK_5000K	DIM.:	SERIAL No.:
MFR.: ASD Lighting Corp	SUR.:	Shielding Angle:

ceiling/cavity	0.7	0.7	0.5	0.5	0.3	0.7	0.7	0.5	0.5	0.3
walls	0.5	0.3	0.5	0.3	0.3	0.5	0.3	0.5	0.3	0.3
working plane	0.2	0.2	0.2	0.2	0.2	0.2	0.2	0.2	0.2	0.2
Room dimensions	Viewed crosswise					Viewed endwise				
x = 2H y = 2H	19.4	20.5	20.3	21.4	22.6	15.3	16.4	16.2	17.3	18.5
3H	23.4	24.4	24.3	25.4	26.6	18.3	19.3	19.1	20.2	21.4
4H	25.6	26.6	26.5	27.5	28.7	19.9	20.9	20.8	21.8	23.0
6H	27.9	28.8	28.8	29.7	31.0	21.7	22.6	22.6	23.6	24.8
8H	29.1	30.0	30.1	31.0	32.2	22.7	23.6	23.7	24.6	25.8
12H	30.5	31.4	31.4	32.3	33.6	23.9	24.8	24.8	25.7	27.0
4H 2H	20.1	21.0	21.0	22.0	23.2	17.5	18.4	18.4	19.4	20.6
3H	24.3	25.2	25.3	26.1	27.4	20.4	21.2	21.3	22.2	23.4
4H	26.7	27.5	27.7	28.5	29.7	22.0	22.8	23.0	23.8	25.0
6H	29.3	29.9	30.2	30.9	32.2	23.8	24.5	24.8	25.5	26.8
8H	30.6	31.3	31.6	32.3	33.6	24.8	25.5	25.8	26.5	27.8
12H	32.1	32.7	33.1	33.7	35.1	26.0	26.6	27.0	27.6	28.9
8H 4H	27.1	27.7	28.1	28.7	30.1	23.7	24.3	24.6	25.3	26.6
6H	30.0	30.6	31.0	31.6	32.9	25.7	26.2	26.7	27.2	28.6
8H	31.6	32.1	32.6	33.2	34.5	26.8	27.3	27.8	28.3	29.7
12H	33.4	33.9	34.5	34.9	36.3	28.1	28.5	29.1	29.5	30.9
12H 4H	27.1	27.7	28.1	28.7	30.1	24.3	24.9	25.3	26.0	27.3
6H	30.1	30.6	31.1	31.7	33.0	26.5	27.0	27.5	28.0	29.3
8H	31.9	32.3	32.9	33.4	34.7	27.7	28.1	28.7	29.2	30.5
Variations with the observer position at spacings:										
S = 1.0H	+ 0.1 / - 0.1					+ 0.1 / - 0.1				
1.5H	+ 0.3 / - 0.3					+ 0.2 / - 0.2				
2.0H	+ 0.4 / - 0.5					+ 0.3 / - 0.4				

CIE Pub.117, 1977 lm Total Lamp Luminous Flux Corrected (8log(F/F0) = 2.4)
 Area: 0.0488 m2

C Range: 0 - 360DEG
 C Interval: 15.0DEG
 Test Speed: HIGH
 Temperature: 25.0DEG
 Operators: Alan Wang
 Test Date: 15 December 2023

γ Range: 0 - 180DEG
 γ Interval: 1.0DEG
 Test System: EVERFINE GO-R5000_V2 SYSTEM V2.00.416
 Humidity: 42.7%
 Test Distance: 2.500m [K=1.0423]
 Remarks:

UTILIZATION FACTORS TABLE

Test:U:120.0V I:0.2106A P:24.97W PF:0.9879 Freq:60.00Hz Lamp Flux:1977.11x1 lm		
NAME:	TYPE:LED	WEIGHT:
SPEC.:ASD-LWS27N-24D24BK_5000K	DIM.:	SERIAL No.:
MFR.: ASD Lighting Corp	SUR.:	Shielding Angle:

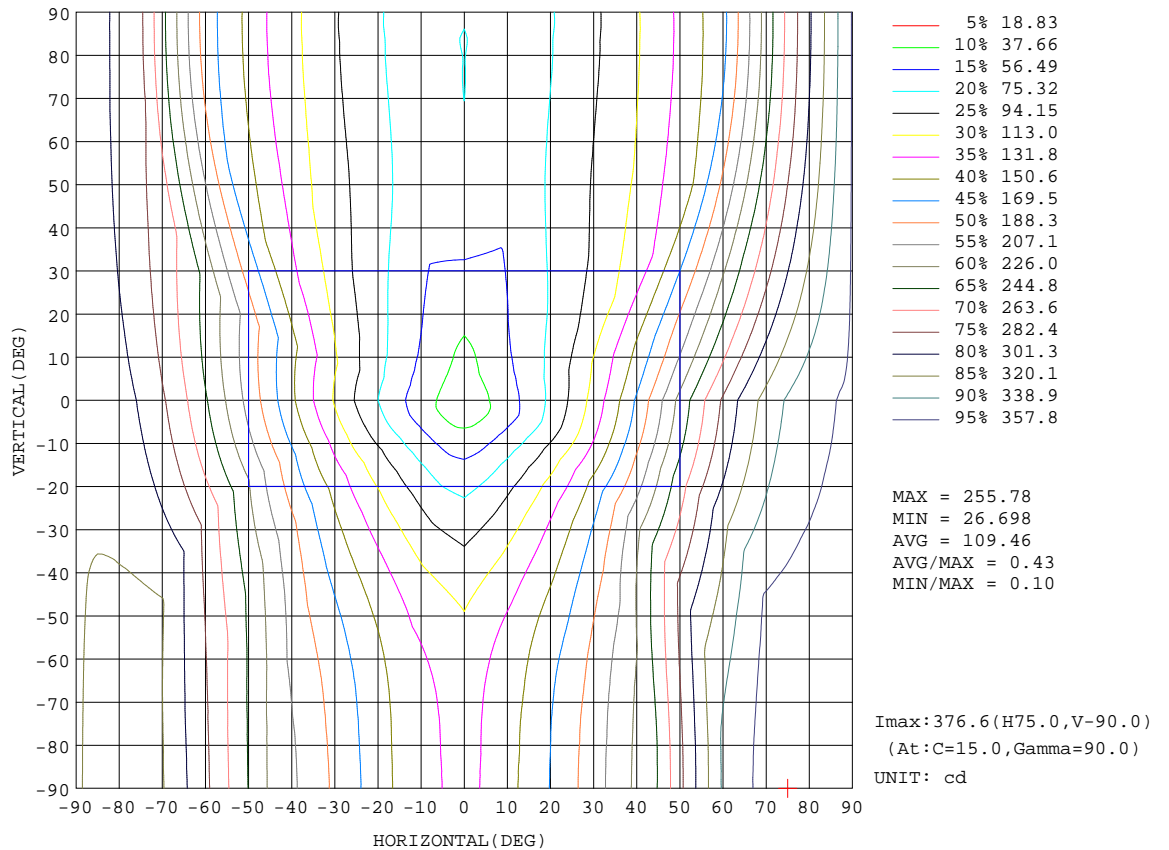
REFLECTANCE										
Ceiling	0.8	0.8	0.8	0.7	0.7	0.7	0.5	0.5	0.5	0
Walls	0.7	0.5	0.3	0.7	0.5	0.3	0.7	0.5	0.3	0
Working plane	0.2	0.2	0.2	0.2	0.2	0.2	0.2	0.2	0.2	0
ROOM INDEX	UTILIZATION FACTORS(PERCENT) $k(RI) \times RCR = 5$									
k = 0.60	34	21	14	32	20	13	29	18	12	5
0.80	42	28	19	40	26	18	35	24	17	7
1.00	49	35	25	46	33	24	40	31	21	10
1.25	56	41	32	52	39	30	45	34	26	12
1.50	62	47	37	57	44	35	49	38	30	15
2.00	70	56	46	64	52	43	54	45	37	19
2.50	75	62	52	69	58	49	58	49	42	22
3.00	79	67	58	73	62	54	61	53	46	24
4.00	84	74	66	78	69	61	65	58	52	28
5.00	88	79	72	81	73	66	68	62	57	31
ROOM INDEX	UF(total)									Direct
According to DIN EN 13032-2 2004			Suspended				SHRNOM = 1.25			

C Range: 0 - 360DEG
 C Interval: 15.0DEG
 Test Speed: HIGH
 Temperature: 25.0DEG
 Operators: Alan Wang
 Test Date: 15 December 2023

γ Range: 0 - 180DEG
 γ Interval: 1.0DEG
 Test System: EVERFINE GO-R5000_V2 SYSTEM V2.00.416
 Humidity: 42.7%
 Test Distance: 2.500m [K=1.0423]
 Remarks:

ISOCANDELA DIAGRAM

Test:U:120.0V I:0.2106A P:24.97W PF:0.9879 Freq:60.00Hz Lamp Flux:1977.11x1 lm		
NAME:	TYPE:LED	WEIGHT:
SPEC.:ASD-LWS27N-24D24BK_5000K	DIM.:	SERIAL No.:
MFR.: ASD Lighting Corp	SUR.:	Shielding Angle:

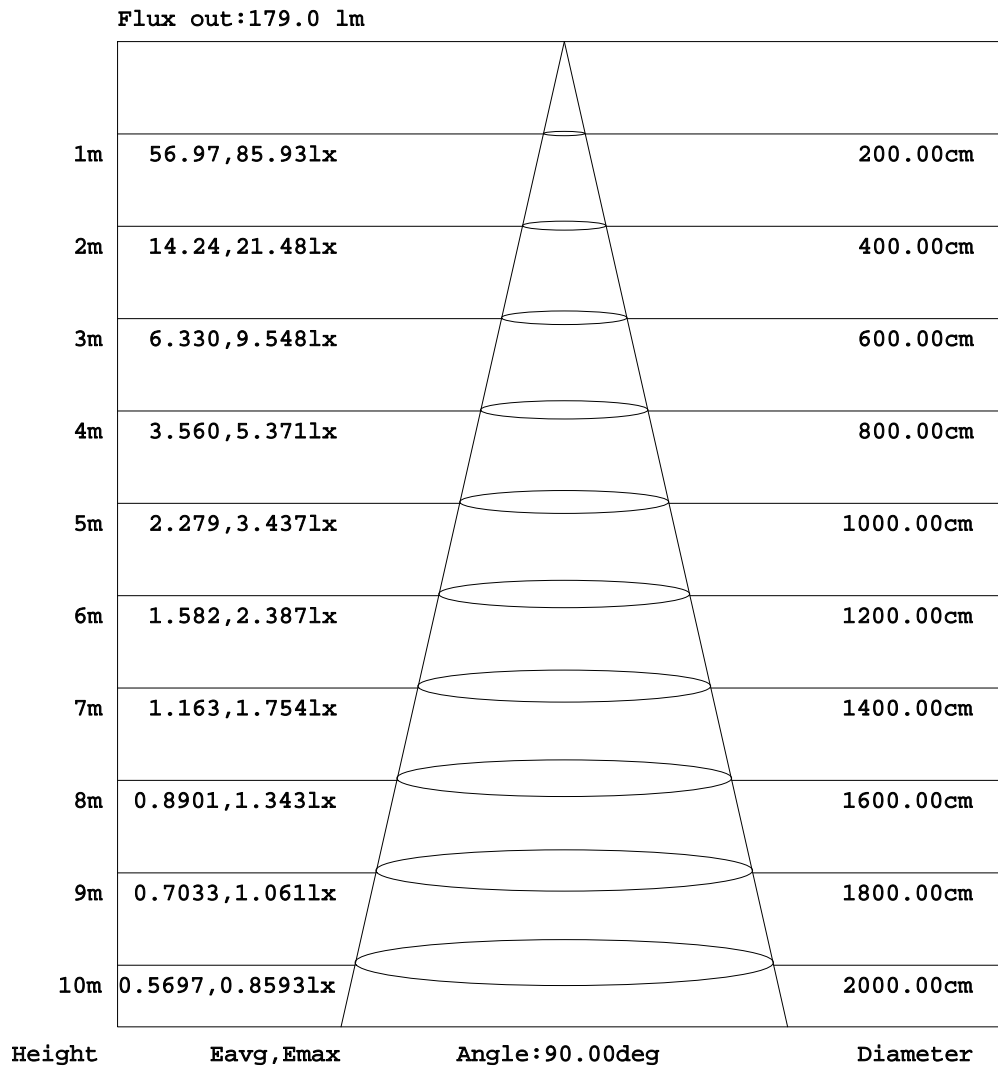


C Range: 0 - 360DEG
 C Interval: 15.0DEG
 Test Speed: HIGH
 Temperature: 25.0DEG
 Operators: Alan Wang
 Test Date: 15 December 2023

γ Range: 0 - 180DEG
 γ Interval: 1.0DEG
 Test System: EVERFINE GO-R5000_V2 SYSTEM V2.00.416
 Humidity: 42.7%
 Test Distance: 2.500m [K=1.0423]
 Remarks:

AAI Figure

Test:U:120.0V I:0.2106A P:24.97W PF:0.9879 Freq:60.00Hz Lamp Flux:1977.11x1 lm		
NAME:	TYPE:LED	WEIGHT:
SPEC.:ASD-LWS27N-24D24BK_5000K	DIM.:	SERIAL No.:
MFR.: ASD Lighting Corp	SUR.:	Shielding Angle:



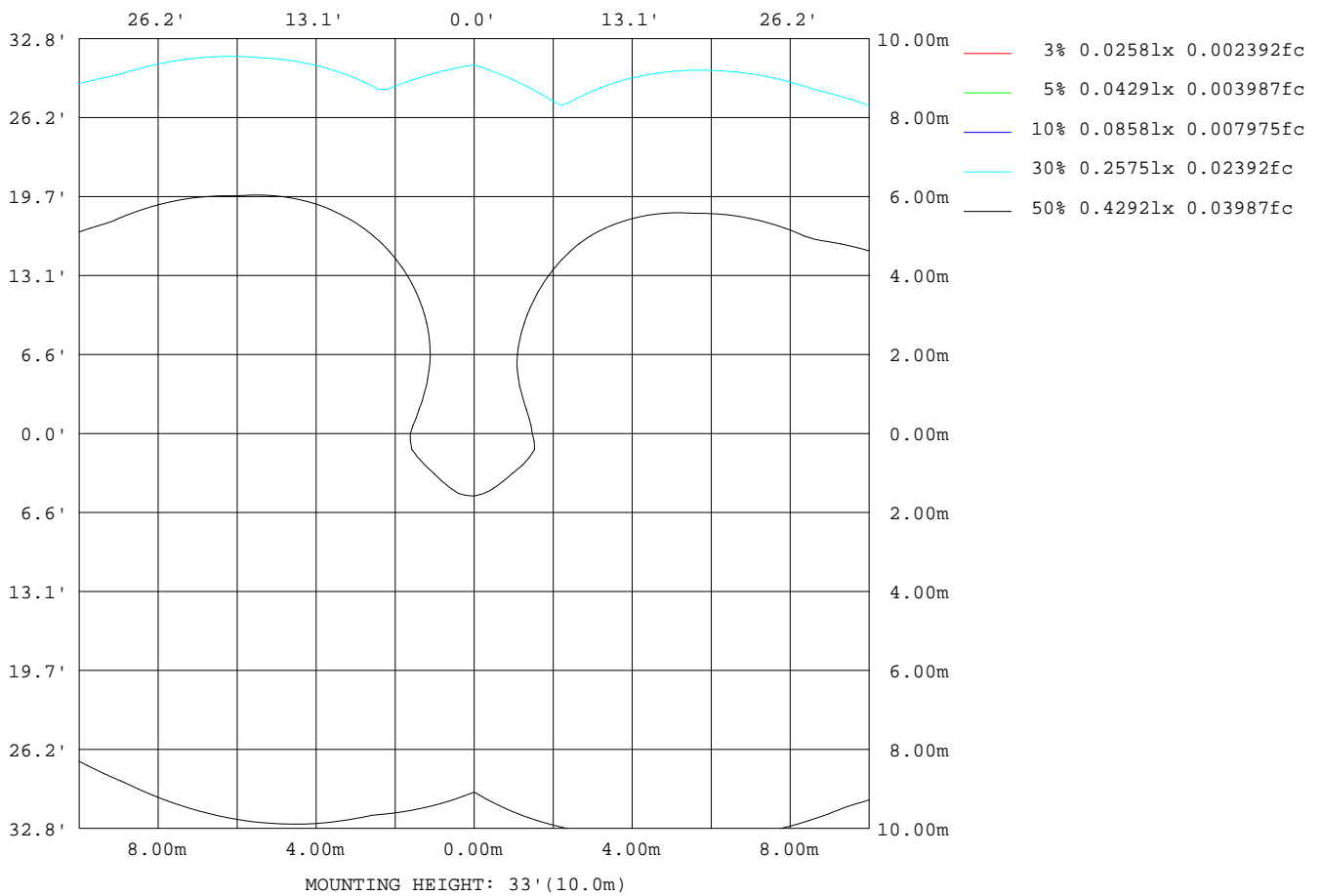
Note:The Curves indicate the illuminated area and the average illumination when the luminaire is at different distance.

C Range: 0 - 360DEG
 C Interval: 15.0DEG
 Test Speed: HIGH
 Temperature: 25.0DEG
 Operators:Alan Wang
 Test Date:15 December 2023

γ Range: 0 - 180DEG
 γ Interval: 1.0DEG
 Test System:EVERFINE GO-R5000_V2 SYSTEM V2.00.416
 Humidity: 42.7%
 Test Distance:2.500m [K=1.0423]
 Remarks:

ISOLUX DIAGRAM

Test:U:120.0V I:0.2106A P:24.97W PF:0.9879 Freq:60.00Hz Lamp Flux:1977.11x1 lm		
NAME:	TYPE:LED	WEIGHT:
SPEC.:ASD-LWS27N-24D24BK_5000K	DIM.:	SERIAL No.:
MFR.: ASD Lighting Corp	SUR.:	Shielding Angle:



C Range: 0 - 360DEG
 C Interval: 15.0DEG
 Test Speed: HIGH
 Temperature: 25.0DEG
 Operators: Alan Wang
 Test Date: 15 December 2023

γ Range: 0 - 180DEG
 γ Interval: 1.0DEG
 Test System: EVERFINE GO-R5000_V2 SYSTEM V2.00.416
 Humidity: 42.7%
 Test Distance: 2.500m [K=1.0423]
 Remarks:

LED Avg.L Report

Test:U:120.0V I:0.2106A P:24.97W PF:0.9879 Freq:60.00Hz Lamp Flux:1977.11x1 lm		
NAME:	TYPE:LED	WEIGHT:
SPEC.:ASD-LWS27N-24D24BK_5000K	DIM.:	SERIAL No.:
MFR.: ASD Lighting Corp	SUR.:	Shielding Angle:

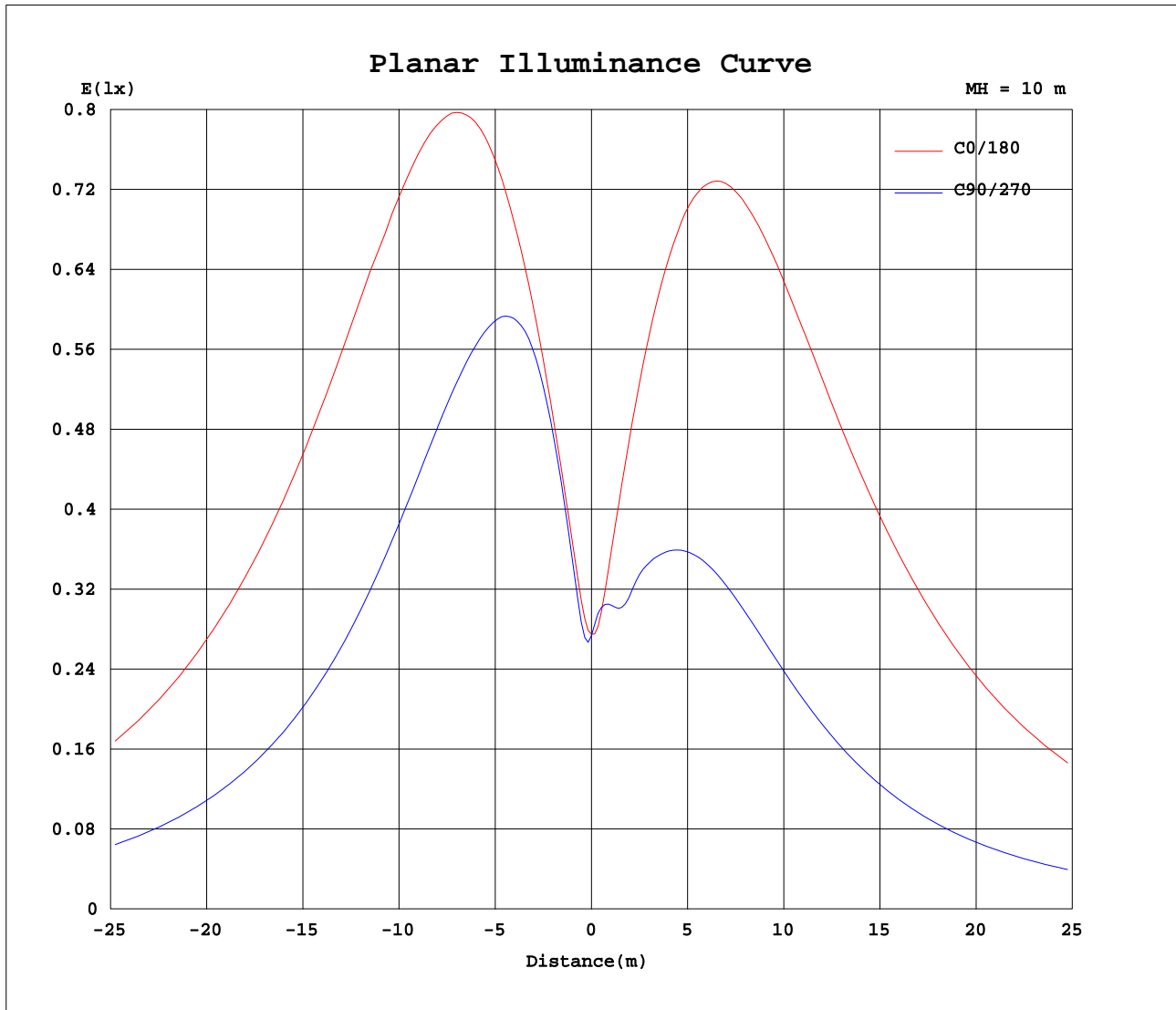
AvgL	cd/m2
L_0~180(65)av	13941
L_0~180(75)av	25338
L_0~180(85)av	78973
L_90~270(65)av	4772
L_90~270(75)av	7880
L_90~270(85)av	23451
L_45(65)av	8028
L_45(75)av	13813
L_45(85)av	42136

Standard: GB/T 29293-2012

C Range: 0 - 360DEG
C Interval: 15.0DEG
Test Speed: HIGH
Temperature: 25.0DEG
Operators: Alan Wang
Test Date: 15 December 2023

γ Range: 0 - 180DEG
 γ Interval: 1.0DEG
Test System: EVERFINE GO-R5000_V2 SYSTEM V2.00.416
Humidity: 42.7%
Test Distance: 2.500m [K=1.0423]
Remarks:

Planar Illuminance Curve



C Range: 0 - 360DEG
 C Interval: 15.0DEG
 Test Speed: HIGH
 Temperature: 25.0DEG
 Operators: Alan Wang
 Test Date: 15 December 2023

γ Range: 0 - 180DEG
 γ Interval: 1.0DEG
 Test System: EVERFINE GO-R5000_V2 SYSTEM V2.00.416
 Humidity: 42.7%
 Test Distance: 2.500m [K=1.0423]
 Remarks:

LUMINOUS DISTRIBUTION INTENSITY DATA

Test:U:120.0V I:0.2106A P:24.97W PF:0.9879 Freq:60.00Hz Lamp Flux:1977.11x1 lm		
NAME:	TYPE:LED	WEIGHT:
SPEC.:ASD-LWS27N-24D24BK_5000K	DIM.:	SERIAL No.:
MFR.: ASD Lighting Corp	SUR.:	Shielding Angle:

Table--1

UNIT: cd

C(DEG) γ (DEG)	0	15	30	45	60	75	90	105	120	135	150	165	180	195	210	225	240	255	270
0	27.5	27.5	27.5	27.4	27.4	27.4	27.4	27.3	27.3	27.2	27.2	27.2	27.5	27.5	27.5	27.4	27.4	27.4	27.4
5	35.7	34.5	33.8	34.1	34.1	33.8	33.7	33.6	33.7	33.7	33.4	33.3	34.3	35.0	35.1	34.5	33.5	31.7	30.9
10	48.7	47.1	49.7	51.5	51.0	48.8	47.1	47.6	49.8	50.7	49.6	46.8	46.7	48.2	47.8	45.5	42.0	37.6	32.0
15	63.0	62.5	67.9	69.9	68.2	63.7	59.5	61.5	66.1	68.4	67.4	62.7	60.4	62.4	60.7	56.1	49.9	42.8	37.7
20	79.3	80.7	87.5	88.8	84.7	77.1	70.3	74.0	81.2	85.6	85.8	80.4	75.4	77.5	73.5	65.8	56.7	47.1	42.8
25	98.2	102	109	108	99.8	89.0	79.6	85.2	94.9	102	105	99.6	92.3	93.8	86.1	74.6	62.6	50.9	48.2
30	120	125	131	126	114	99.8	88.0	95.3	108	118	124	120	111	111	98.0	82.4	68.2	54.6	53.8
35	145	151	156	144	127	110	95.9	105	120	133	143	142	132	130	110	89.8	73.5	58.2	58.9
40	173	180	181	161	139	119	103	114	131	147	163	166	154	150	121	96.6	78.2	61.4	63.5
45	202	209	206	176	150	127	109	121	141	161	182	190	178	169	131	103	82.5	64.0	67.4
50	232	240	231	191	160	135	114	128	151	173	200	214	201	189	140	109	86.1	66.1	70.3
55	260	269	255	204	170	141	117	133	159	184	218	238	224	209	149	114	89.0	67.5	72.5
60	285	296	277	215	177	145	120	137	166	194	235	262	247	227	156	118	91.3	68.4	73.9
65	308	320	297	225	184	149	122	141	172	202	249	283	267	244	163	122	93.0	68.9	74.9
70	327	341	313	232	189	152	123	143	177	209	262	302	285	259	169	124	94.2	69.1	75.4
75	341	357	326	238	193	154	124	145	180	215	272	317	299	270	173	126	95.0	69.1	75.5
80	351	368	335	242	196	155	124	145	182	219	279	328	309	278	176	128	95.4	69.0	75.5
85	357	374	340	245	198	156	124	146	184	222	284	336	315	283	178	129	95.7	69.0	75.6
90	359	377	342	246	198	156	124	147	185	223	287	339	318	286	179	129	95.8	68.7	75.1
95	357	374	340	245	198	156	124	147	185	223	286	338	317	284	178	129	95.9	69.2	75.7
100	351	367	334	242	197	156	124	146	184	221	283	332	312	280	176	128	95.7	69.5	76.0
105	340	356	325	239	194	155	124	146	182	219	278	322	303	271	173	127	95.1	69.7	76.3
110	325	339	312	233	190	153	124	145	179	214	269	307	290	260	169	125	94.2	69.6	76.4
115	306	319	295	225	185	151	123	143	175	208	257	289	273	245	163	122	92.7	69.3	76.3
120	284	295	276	215	179	147	122	140	170	200	243	268	253	229	156	119	90.8	68.6	75.6
125	258	268	254	204	171	143	119	136	163	191	227	245	232	210	149	114	88.4	67.6	74.7
130	231	239	230	192	162	137	116	131	155	180	210	221	208	191	140	110	85.3	66.0	73.0
135	202	209	205	177	152	130	111	125	146	168	190	197	184	172	131	104	81.5	63.5	69.7
140	173	180	181	161	141	121	105	117	136	154	170	172	161	153	122	98.1	76.7	60.0	65.7
145	146	152	156	145	128	112	98.3	108	124	139	151	149	138	134	112	92.2	72.1	55.6	60.3
150	122	126	133	128	116	102	90.6	98.8	112	125	131	126	117	117	103	86.4	68.7	52.7	53.8
155	100	103	111	110	102	91.9	82.7	89.1	100	108	111	105	98.7	100	93.2	81.0	65.5	49.6	45.3
160	81.8	82.1	89.4	91.3	87.7	80.6	74.2	78.7	86.4	91.2	91.3	85.4	81.8	83.6	81.7	74.6	62.7	49.4	34.9
165	65.9	64.4	69.9	72.5	71.3	67.2	63.6	66.0	70.8	73.2	72.2	67.5	66.5	67.5	68.3	65.3	58.1	47.0	31.0
170	51.7	49.6	51.8	53.9	53.8	52.0	50.8	51.5	53.8	54.8	53.7	51.1	52.5	52.8	54.2	52.7	46.2	27.6	16.9
175	20.7	30.2	34.1	36.5	36.6	36.6	36.8	36.7	36.9	37.1	35.0	30.9	23.5	25.4	18.2	10.2	5.92	2.85	0.88
180	0.00	0.00	0.00	0.00	9.61	25.6	27.5	26.3	9.38	0.00	0.00	0.00	0.11	0.11	0.12	0.15	0.18	0.19	0.19

C Range: 0 - 360DEG
 C Interval: 15.0DEG
 Test Speed: HIGH
 Temperature: 25.0DEG
 Operators: Alan Wang
 Test Date: 15 December 2023

γ Range: 0 - 180DEG
 γ Interval: 1.0DEG
 Test System: EVERFINE GO-R5000_V2 SYSTEM V2.00.416
 Humidity: 42.7%
 Test Distance: 2.500m [K=1.0423]
 Remarks:

LUMINOUS DISTRIBUTION INTENSITY DATA

Test:U:120.0V I:0.2106A P:24.97W PF:0.9879 Freq:60.00Hz Lamp Flux:1977.11x1 lm		
NAME:	TYPE:LED	WEIGHT:
SPEC.:ASD-LWS27N-24D24BK_5000K	DIM.:	SERIAL No.:
MFR.: ASD Lighting Corp	SUR.:	Shielding Angle:

Table--2

UNIT: cd

C(DEG) γ (DEG)	285	300	315	330	345														
0	27.3	27.3	27.2	27.2	27.2														
5	31.9	34.3	35.4	36.0	35.9														
10	37.2	42.8	46.1	48.4	49.2														
15	42.0	49.8	55.7	60.5	63.1														
20	45.7	55.7	64.1	71.9	77.9														
25	49.0	60.9	71.4	82.6	93.7														
30	52.4	65.9	78.2	92.4	110														
35	55.6	70.5	84.6	102	128														
40	58.5	74.9	90.7	111	146														
45	60.9	78.7	96.3	119	165														
50	62.9	81.9	102	127	183														
55	64.3	84.7	106	135	201														
60	65.2	86.7	110	142	217														
65	65.7	88.2	114	148	232														
70	65.9	89.3	117	153	244														
75	65.8	90.0	119	158	254														
80	65.7	90.4	120	161	262														
85	65.8	90.8	121	163	266														
90	65.5	90.6	122	164	269														
95	65.9	90.9	122	164	268														
100	66.1	90.9	122	162	265														
105	66.2	90.5	120	160	258														
110	66.2	89.6	118	156	250														
115	65.9	88.3	116	151	238														
120	65.2	86.2	111	143	223														
125	63.7	82.9	106	136	206														
130	61.5	79.2	100	129	188														
135	58.7	74.9	95.6	122	169														
140	55.3	70.2	89.9	113	150														
145	51.6	65.1	83.6	103	130														
150	47.5	59.1	77.0	93.0	111														
155	40.6	51.7	68.2	82.0	93.7														
160	35.4	45.0	59.1	70.8	78.0														
165	30.9	35.2	50.8	59.7	63.9														
170	15.8	19.6	34.2	46.8	51.0														
175	0.52	0.92	2.71	5.84	10.1														
180	0.19	0.18	0.16	0.14	0.16														

C Range: 0 - 360DEG
 C Interval: 15.0DEG
 Test Speed: HIGH
 Temperature: 25.0DEG
 Operators: Alan Wang
 Test Date: 15 December 2023

γ Range: 0 - 180DEG
 γ Interval: 1.0DEG
 Test System: EVERFINE GO-R5000_V2 SYSTEM V2.00.416
 Humidity: 42.7%
 Test Distance: 2.500m [K=1.0423]
 Remarks: