



# LED OUTDOOR WALL SCONCE

► **DESIGN** - LED OUTDOOR WALL SCONCE has a modern, multipurpose design and a sleek look with multidirectional illumination. The clear seeded glass shade with a 245° beam angle filled with air bubbles emits a luxurious glow. It is designed to operate on 120V or 120-277V circuits and provides smooth triac dimming capabilities ranging from 10% to 100%.

► **COLOR SELECTABLE** - You can choose either a 3,000K warm white, 4,000K cool white or 5,000K daylight color temperature.

► Durable waterproof housing resistant to rust and impact can be used outdoors in all weather conditions.

► **APPLICATION** - The fixture is rated for Wet Locations, making it perfect for indoor and outdoor projects such as decks, front doors, porches, patios, corridors, walkways, or any other common areas.

► **ADVANTAGES** - With a lifespan of 50,000 hours, these fixtures are made to last decades under normal operation! ASD provides a 5-year limited warranty along with ETL certification to guarantee top quality products and safety!

Catalog number	
Notes	
Type	



## PRODUCT PRESENTATION:

Model	Size	Power	Voltage	Dimming	Lumens	CCT	Finish	Dimensions	Certification
ASD-LWS28S-12D22CC-BK	12 inch	22W	120 V	TRIAC	up to 485 lm	3CCT (3,000/4,000/5,000 K)	Black	5-1/2" x 2-3/16" x 11-13/16"	ETL (4001256)
ASD-LWS28S-MV-18D22CC-BK	18 inch	22W	120-277 V	TRIAC	up to 520 lm	3CCT (3,000/4,000/5,000 K)	Black	5-1/2" x 2-3/16" x 18-1/8"	ETL (4001256)
ASD-LWS28S-MV-18D22WH	18 inch	22W	120-277 V	TRIAC	up to 520 lm	3CCT (3,000/4,000/5,000 K)	White	5-1/2" x 2-3/16" x 18-1/8"	ETL (4001256)
ASD-LWS28S-MV-24D22CC-BK	24 inch	22W	120-277 V	TRIAC	up to 531 lm	3CCT (3,000/4,000/5,000 K)	Black	5-1/2" x 2-3/16" x 24"	ETL (4001256)
ASD-LWS28S-MV-24D22WH	24 inch	22W	120-277 V	TRIAC	up to 531 lm	3CCT (3,000/4,000/5,000 K)	White	5-1/2" x 2-3/16" x 24"	ETL (4001256)

## TECHNICAL PARAMETERS:

Application area	Series	Model	Work environment	Operating temperature	Power factor	Surge protection	Housing	Lens	CRI
RESIDENTIAL	LWS28	ASD-LWS28S-12D22CC-BK	Wet location	-40°F to 113°F (-40°C to 45°C)	> 0.9	2 kV	Aluminium	Clear seeded glass	> 80
		ASD-LWS28S-MV-18D22CC-BK	Wet location	-40°F to 113°F (-40°C to 45°C)	> 0.9	1 kV	Aluminium	Clear seeded glass	> 80
		ASD-LWS28S-MV-18D22WH	Wet location	-40°F to 113°F (-40°C to 45°C)	> 0.9	1 kV	Aluminium	Clear seeded glass	> 80
		ASD-LWS28S-MV-24D22CC-BK	Wet location	-40°F to 113°F (-40°C to 45°C)	> 0.9	1 kV	Aluminium	Clear seeded glass	> 80
		ASD-LWS28S-MV-24D22WH	Wet location	-40°F to 113°F (-40°C to 45°C)	> 0.9	1 kV	Aluminium	Clear seeded glass	> 80

## DIMMING COMPATIBLE CONTROLS:

Brand	Lutron	Leviton
Models	MACL-153MLH-WH	R02-DW6HD-2RW
	STCL-153PH-WH	R00-RNL06-0TW
	PD-6WCL-WH-R	R68-06674-P0T
	DVCL-153PR	DSL06
	P-PKG1W	

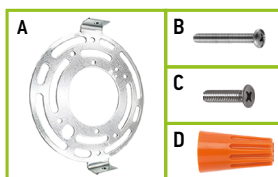
For most up-to-date spec sheets please refer to [asd-lighting.com](http://asd-lighting.com)



# LED OUTDOOR WALL SCENCE

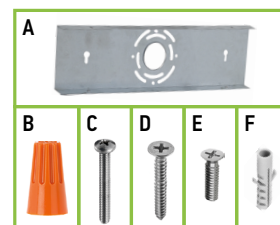
## PACKAGE CONTENTS FOR 12" MODEL:

Description	Quantity
LED Outdoor Wall Sconce	1
Mounting plate (A)	1
Mounting screw (B)	2
Black screw (C)	2
Wire nut (D)	3
Box	1



## PACKAGE CONTENTS FOR 18-24" MODELS:

Description	Quantity
LED Outdoor Wall Sconce	1
Mounting plate (A)	1
Wire nut (B)	3
Mounting screw (C)	2
Self-tapping screw (D)	2
Black screw (E)	4
Anchor (F)	2
Box	1



## INSTALLATION GUIDE

### IMPORTANT SAFETY INFORMATION:

Please read all the instructions below before installation!

- ▶ Make sure that the supply voltage corresponds to the rated product voltage.
- ▶ The product must be installed by a qualified electrician in accordance with the National Electrical Code and corresponding local codes.
- ▶ If the product is damaged, do not use it.

### ⚠ WARNING

**Risk of personal injury** – read and follow all warnings and installation instructions. Keep or give to the owner for future reference.

**Risk of cuts:** Wear gloves to prevent cuts or abrasions when removing from carton, handling, installing, and maintaining this product.

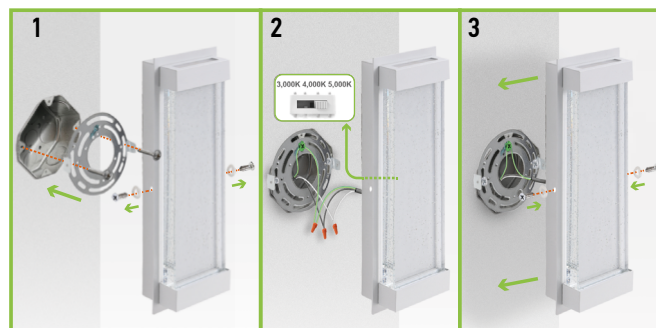
**Risk of electric shock:** This product must be installed in accordance with the applicable installation code by a person familiar with the construction and operation of the product and the hazards involved.

**Risk of Fire:** Minimum 194°F supply conductors. Consult a qualified electrician to ensure correct branch circuit conductor.

ASD® assumes no responsibility for claims arising out of improper or careless installation or handling of this product.

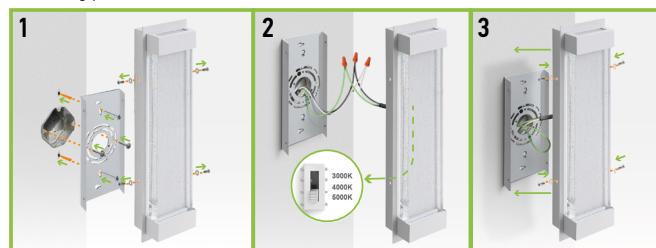
### INSTALLATION STEPS FOR MODEL 12":

1. Unscrew the fixture screws from both sides of the wall sconce. Remove the mounting plate and attach it to the existing outlet box using two mounting screws.
2. Choose preferred color temperature by adjusting switch position. Connect the wires: Black to Black, White to White, Green to Green. Secure the connection with wire nuts.
3. Fix the wall sconce to the mounting plate using fixture screws on both sides. Before tightening the screws, align the holes of both the fixture and the mounting plate to ensure a solid fit.



### INSTALLATION STEPS FOR MODELS 18-24":

1. Unscrew four fixture screws from both sides of the wall sconce. Remove the mounting plate and attach it to the existing outlet box using two mounting screws. Secure the mounting plate to the wall, using two anchors and two screws.
2. Choose preferred color temperature by adjusting switch position. Connect the wires: Black to Black, White to White, Green to Green. Secure the connection with wire nuts.
3. Fix the wall sconce to the mounting plate using four fixture screws on both sides. Before tightening the screws, align the holes of both the fixture and the mounting plate to ensure a solid fit.



## ORDERING INFORMATION

Application area	Series	Model	Product dimensions	Weight	Pcs. (pack) per carton	Carton size	Carton weight	UPC	GTIN 14
RESIDENTIAL	LWS28	ASD-LWS28S-12D22CC-BK	5-1/2" x 2-3/16" x 11-13/16"	4.4 lbs (2.0 kg)	4	15.16" x 8.86" x 14.37"	23.1 lbs	81005073936	10810050739365
		ASD-LWS28S-MV-18D22CC-BK	5-1/2" x 2-3/16" x 18-1/8"	7.3 lbs (3.3 kg)	2	20.87" x 8.27" x 9.65"	16.9 lbs	81012811260	10810128112601
		ASD-LWS28S-MV-18D22WH	5-1/2" x 2-3/16" x 18-1/8"	7.3 lbs (3.3 kg)	2	20.87" x 8.27" x 9.65"	16.9 lbs	81012811942	10810128119426
		ASD-LWS28S-MV-24D22CC-BK	5-1/2" x 2-3/16" x 24"	9.7 lbs (4.4 kg)	2	26.77" x 8.27" x 9.65"	22.1 lbs	81012811261	10810128112618
		ASD-LWS28S-MV-24D22WH	5-1/2" x 2-3/16" x 24"	9.7 lbs (4.4 kg)	2	26.77" x 8.27" x 9.65"	22.1 lbs	81012811943	10810128119433

For most up-to-date spec sheets please refer to [asd-lighting.com](http://asd-lighting.com)