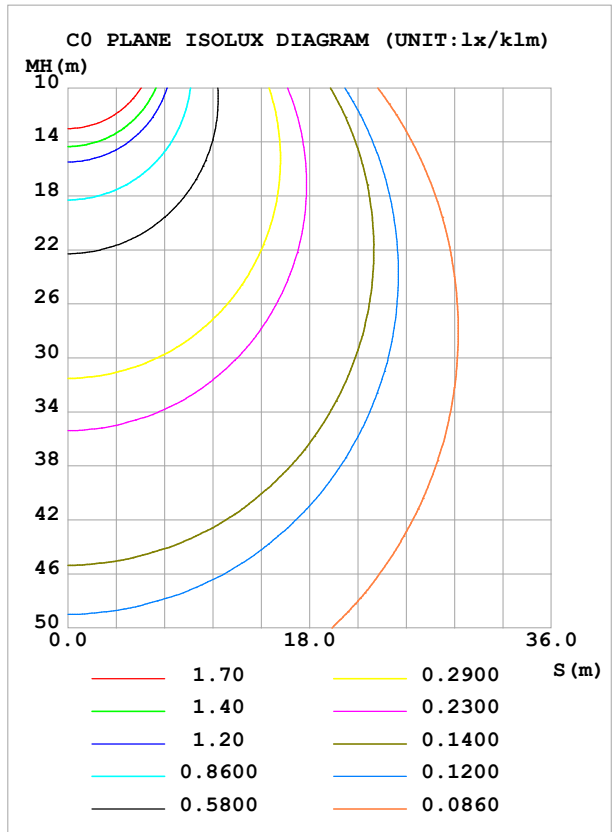
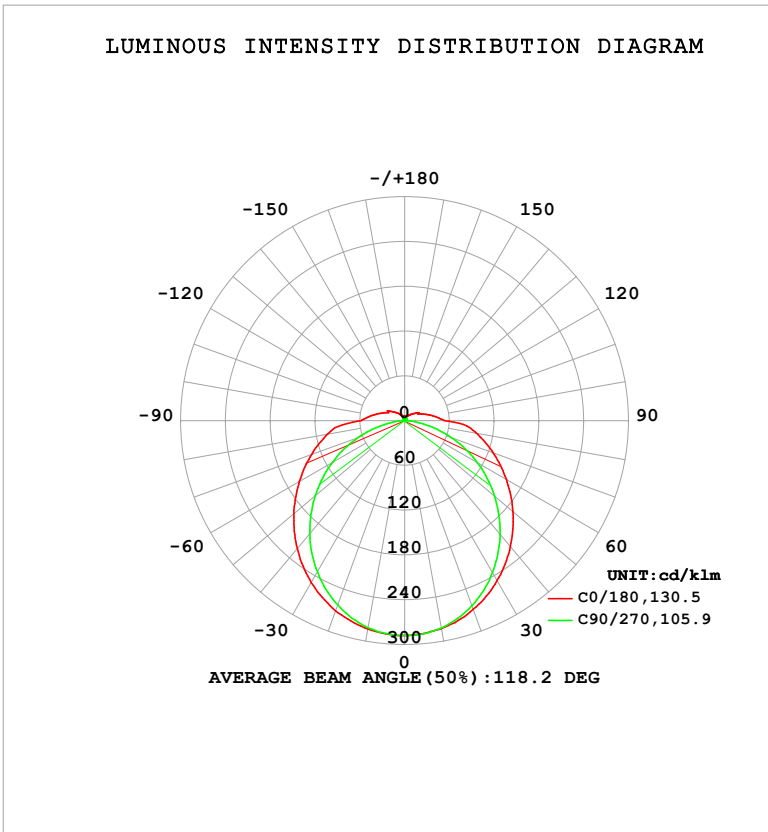


**LUMINAIRE PHOTOMETRIC TEST REPORT**

Test:U:120.06V I:0.2018A P:24.000W PF:0.9906 Freq:60.01Hz UTHDi:0.00% ITHDi:0.00% KDisp:0 Lamp Flux:3249.18x1 lm		
NAME: ASD-LSF8-2A25WH	TYPE:	WEIGHT:
SPEC.: 25W-5000K	DIM.:	SERIAL No.:
MFR.: ASD Lighting Corp.	SUR.: 0.6*0.1m	Shielding Angle:

DATA OF LAMP		PHOTOMETRIC DATA			
MODEL	ASD-LSF8-2A25WH	Imax (cd/klm)	287.9	S/MH (C0/180)	1.30
NOMINAL POWER (W)	25	LOR (%)	100.0	S/MH (C90/270)	1.22
RATED VOLTAGE (V)	120	TOTAL FLUX (lm/klm)	1000.00	$\eta$ UP, DN (C0-180)	4.3,45.6
NOMINAL FLUX (lm)	3249.18	CIE CLASS	DIRECT	$\eta$ UP, DN (C180-360)	4.5,45.6
LAMPS INSIDE	1	$\eta$ up (%)	8.8	CIBSE SHR NOM	1.25
TEST VOLTAGE (V)	120	$\eta$ down (%)	91.2	CIBSE SHR MAX	1.35



C Range: 0 - 360DEG  
 C Interval: 45.0DEG  
 Test Speed: HIGH  
 Temperature: 25.3°C  
 Operators: lianghaizhu-2  
 Test Date: 2024-11-25

$\gamma$  Range: 0 - 180DEG  
 $\gamma$  Interval: 1.0DEG  
 Test System: EVERFINE GO-2000A\_V1 SYSTEM V2.00.488  
 Humidity: 65.0%  
 Test Distance: 9.770m [K=1.0000]  
 Remarks:

ZONAL FLUX DIAGRAM

ZONAL FLUX DIAGRAM:

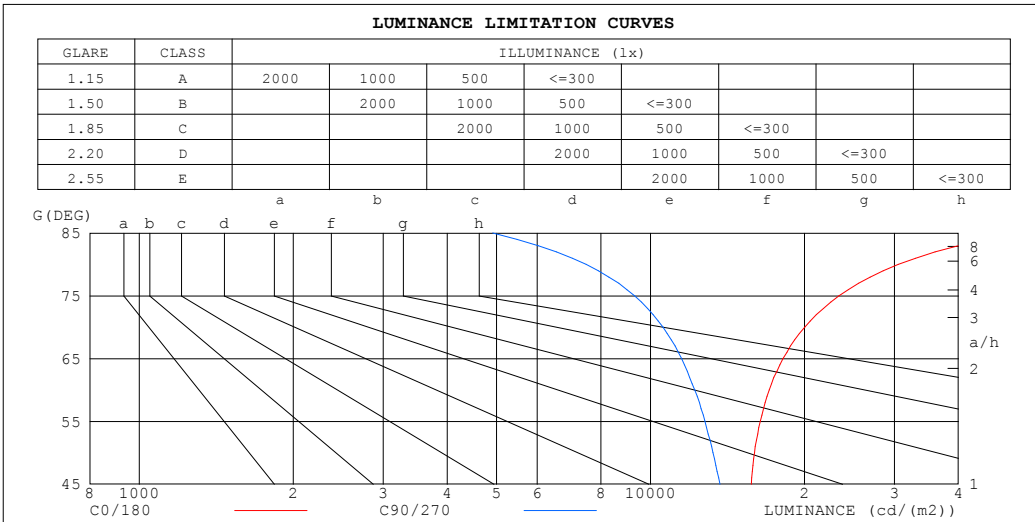
$\gamma$	C0	C45	C90	C135	C180	C225	C270	C315	$\gamma$	$\Phi$ zone	$\Phi$ total	%lum,lamp
10	283.0	282.2	282.4	282.7	283.7	282.5	281.6	281.7	0- 10	27.21	27.21	2.72,2.72
20	269.0	266.7	263.8	267.8	270.9	266.3	262.6	265.5	10- 20	77.80	105.0	10.5,10.5
30	247.7	241.4	235.3	243.2	250.6	241.4	233.9	240.1	20- 30	117.6	222.6	22.3,22.3
40	220.6	208.9	198.8	211.7	223.8	209.6	197.6	208.0	30- 40	141.8	364.4	36.4,36.4
50	189.4	172.8	157.4	176.2	193.8	173.5	156.3	171.8	40- 50	148.4	512.8	51.3,51.3
60	157.4	135.3	112.8	139.5	162.9	136.6	111.8	134.6	50- 60	138.9	651.7	65.2,65.2
70	126.3	100.1	66.84	104.8	132.7	101.7	66.15	99.63	60- 70	116.8	768.5	76.8,76.8
80	97.72	69.31	24.04	74.34	104.9	71.28	23.60	68.67	70- 80	87.53	856.0	85.6,85.6
90	53.84	36.47	0.6579	40.06	58.64	39.40	0.6670	37.61	80- 90	55.95	912.0	91.2,91.2
100	38.45	22.78	0.9011	26.51	43.41	26.04	1.014	23.96	90-100	30.38	942.3	94.2,94.2
110	26.44	14.29	1.506	17.57	30.94	17.46	1.529	15.05	100-110	20.13	962.5	96.2,96.2
120	21.79	9.930	1.983	12.89	26.98	12.00	1.949	10.03	110-120	13.38	975.9	97.6,97.6
130	14.43	7.739	2.551	9.566	18.23	9.329	2.464	7.835	120-130	9.402	985.3	98.5,98.5
140	10.27	6.705	3.088	7.885	12.65	7.228	2.929	6.696	130-140	6.230	991.5	99.1,99.1
150	8.034	5.220	3.519	6.850	8.417	6.651	3.334	5.333	140-150	4.092	995.6	99.6,99.6
160	6.356	4.391	3.845	6.148	6.990	5.731	3.656	4.512	150-160	2.569	998.2	99.8,99.8
170	4.930	3.918	4.339	5.195	5.898	5.219	4.175	3.912	160-170	1.411	999.6	100,100
180	4.148	4.632	4.616	4.588	4.164	4.644	4.624	4.580	170-180	0.4379	1000.0	100,100
DEG	LUMINOUS INTENSITY:cd/klm									UNIT:lm/klm		

C Range: 0 - 360DEG  
 C Interval: 45.0DEG  
 Test Speed: HIGH  
 Temperature:25.3°C  
 Operators:lianghaizhu-2  
 Test Date:2024-11-25

$\gamma$  Range: 0 - 180DEG  
 $\gamma$  Interval: 1.0DEG  
 Test System:EVERFINE GO-2000A\_V1 SYSTEM V2.00.488  
 Humidity:65.0%  
 Test Distance:9.770m [K=1.0000]  
 Remarks:

**LUMINANCE LIMITATION CURVES**

Test:U:120.06V I:0.2018A P:24.000W PF:0.9906 Freq:60.01Hz UTHDi:0.00% ITHDi:0.00% KDisp:0 Lamp Flux:3249.18x1 lm		
NAME: ASD-LSF8-2A25WH	TYPE:	WEIGHT:
SPEC.: 25W-5000K	DIM.:	SERIAL No.:
MFR.: ASD Lighting Corp.	SUR.: 0.6*0.1m	Shielding Angle:



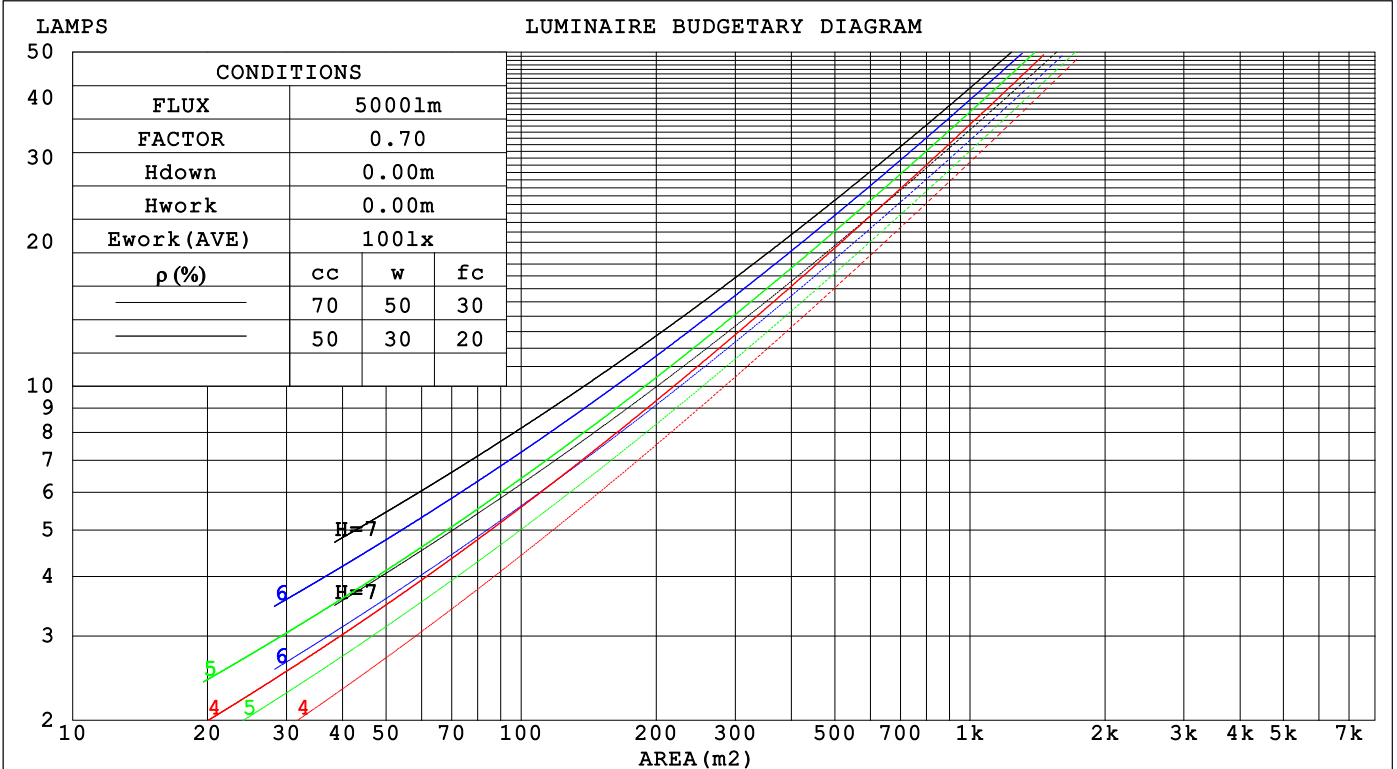
C Range: 0 - 360DEG  
 C Interval: 45.0DEG  
 Test Speed: HIGH  
 Temperature: 25.3°C  
 Operators: lianghaizhu-2  
 Test Date: 2024-11-25

γ Range: 0 - 180DEG  
 γ Interval: 1.0DEG  
 Test System: EVERFINE GO-2000A\_V1 SYSTEM V2.00.488  
 Humidity: 65.0%  
 Test Distance: 9.770m [K=1.0000]  
 Remarks:

CU AND LUMINAIRE BUDGETARY ESTIMATE DIAGRAM

Test:U:120.06V I:0.2018A P:24.000W PF:0.9906 Freq:60.01Hz		
UTHDi:0.00% ITHDi:0.00% KDisp:0 Lamp Flux:3249.18x1 lm		
NAME: ASD-LSF8-2A25WH	TYPE:	WEIGHT:
SPEC.: 25W-5000K	DIM.:	SERIAL No.:
MFR.: ASD Lighting Corp.	SUR.: 0.6*0.1m	Shielding Angle:

pcc	80%			70%			50%			30%			10%			0
pw	50%	30%	10%	50%	30%	10%	50%	30%	10%	50%	30%	10%	50%	30%	10%	0
pfc	20%			20%			20%			20%			20%			0
RCR	RCR:Room Cavity Ratio						Coefficients of Utilization(CU)									
0.0	1.17	1.17	1.17	1.13	1.13	1.13	1.06	1.06	1.06	.00	.00	.00	.94	.94	.94	.91
1.0	.99	.94	.90	.96	.92	.87	.90	.86	.83	.85	.82	.79	.80	.77	.75	.72
2.0	.86	.78	.72	.83	.76	.70	.78	.72	.67	.73	.68	.64	.69	.65	.62	.59
3.0	.75	.66	.59	.72	.64	.58	.68	.61	.56	.64	.58	.54	.60	.56	.52	.49
4.0	.66	.57	.50	.64	.55	.49	.60	.53	.47	.57	.51	.45	.54	.48	.44	.41
5.0	.59	.49	.42	.57	.48	.42	.54	.46	.40	.51	.44	.39	.48	.43	.38	.36
6.0	.53	.43	.37	.51	.43	.36	.49	.41	.35	.46	.39	.34	.44	.38	.33	.31
7.0	.48	.39	.32	.46	.38	.32	.44	.37	.31	.42	.35	.30	.40	.34	.29	.27
8.0	.43	.35	.29	.42	.34	.28	.40	.33	.28	.38	.32	.27	.37	.31	.26	.24
9.0	.40	.31	.26	.39	.31	.26	.37	.30	.25	.35	.29	.24	.34	.28	.24	.22
10.0	.37	.29	.23	.36	.28	.23	.34	.27	.23	.33	.26	.22	.31	.26	.22	.20



C Range: 0 - 360DEG  
 C Interval: 45.0DEG  
 Test Speed: HIGH  
 Temperature:25.3°C  
 Operators:lianghaizhu-2  
 Test Date:2024-11-25

γ Range: 0 - 180DEG  
 γ Interval: 1.0DEG  
 Test System:EVERFINE GO-2000A\_V1 SYSTEM V2.00.488  
 Humidity:65.0%  
 Test Distance:9.770m [K=1.0000]  
 Remarks:

**WEC AND CCEC**

Test:U:120.06V I:0.2018A P:24.000W PF:0.9906 Freq:60.01Hz		
UTHDi:0.00% ITHDi:0.00% KDisp:0 Lamp Flux:3249.18x1 lm		
NAME: ASD-LSF8-2A25WH	TYPE:	WEIGHT:
SPEC.: 25W-5000K	DIM.:	SERIAL No.:
MFR.: ASD Lighting Corp.	SUR.: 0.6*0.1m	Shielding Angle:

$\rho_{CC}$	80%			70%			50%			30%			10%			0
$\rho_w$	50%	30%	10%	50%	30%	10%	50%	30%	10%	50%	30%	10%	50%	30%	10%	0
$\rho_{fc}$	20%			20%			20%			20%			20%			0
RCR	RCR:Room Cavity Ratio						Wall Exitance Coefficients(WEC)									
0.0																
1.0	.358	.204	.065	.349	.199	.063	.330	.189	.060	.313	.181	.058	.297	.172	.056	
2.0	.318	.174	.054	.310	.170	.053	.293	.163	.051	.278	.156	.049	.264	.149	.047	
3.0	.287	.153	.046	.279	.149	.045	.264	.143	.043	.250	.137	.042	.237	.131	.041	
4.0	.260	.135	.040	.253	.132	.039	.240	.127	.038	.227	.122	.037	.216	.117	.036	
5.0	.238	.121	.035	.231	.119	.035	.219	.114	.034	.208	.110	.033	.198	.106	.032	
6.0	.219	.110	.031	.213	.108	.031	.202	.104	.030	.192	.100	.029	.183	.096	.029	
7.0	.203	.100	.028	.197	.098	.028	.187	.095	.027	.178	.091	.027	.170	.088	.026	
8.0	.188	.092	.026	.184	.090	.026	.175	.087	.025	.166	.084	.024	.158	.081	.024	
9.0	.176	.085	.024	.172	.084	.023	.163	.081	.023	.156	.078	.022	.148	.075	.022	
10.0	.165	.079	.022	.161	.078	.022	.153	.075	.021	.146	.073	.021	.140	.070	.020	

$\rho_{CC}$	80%			70%			50%			30%			10%			0
$\rho_w$	50%	30%	10%	50%	30%	10%	50%	30%	10%	50%	30%	10%	50%	30%	10%	0
$\rho_{fc}$	20%			20%			20%			20%			20%			0
RCR	RCR:Room Cavity Ratio						Ceiling Cavity Exitance Coefficients(CCEC)									
0.0	.258	.258	.258	.220	.220	.220	.150	.150	.150	.086	.086	.086	.028	.028	.028	
1.0	.251	.223	.198	.215	.192	.171	.147	.132	.118	.085	.076	.069	.027	.025	.022	
2.0	.244	.200	.163	.209	.172	.141	.143	.119	.098	.083	.069	.058	.026	.022	.019	
3.0	.236	.183	.140	.202	.158	.122	.139	.110	.085	.080	.064	.050	.026	.021	.016	
4.0	.228	.170	.125	.196	.147	.109	.135	.102	.077	.078	.060	.045	.025	.020	.015	
5.0	.221	.160	.115	.189	.138	.100	.131	.097	.071	.076	.057	.042	.024	.019	.014	
6.0	.213	.152	.108	.183	.131	.094	.126	.092	.066	.073	.054	.039	.024	.018	.013	
7.0	.206	.145	.102	.177	.126	.089	.123	.088	.063	.071	.052	.038	.023	.017	.012	
8.0	.200	.139	.098	.172	.121	.085	.119	.085	.061	.069	.050	.036	.022	.016	.012	
9.0	.193	.134	.095	.167	.117	.083	.115	.082	.059	.067	.048	.035	.022	.016	.012	
10.0	.188	.130	.092	.162	.113	.080	.112	.080	.057	.065	.047	.034	.021	.015	.011	

C Range: 0 - 360DEG  
 C Interval: 45.0DEG  
 Test Speed: HIGH  
 Temperature:25.3°C  
 Operators:lianghaizhu-2  
 Test Date:2024-11-25

$\gamma$  Range: 0 - 180DEG  
 $\gamma$  Interval: 1.0DEG  
 Test System:EVERFINE GO-2000A\_V1 SYSTEM V2.00.488  
 Humidity:65.0%  
 Test Distance:9.770m [K=1.0000]  
 Remarks:

**UGR(Unified Glare Rating) Table**

Test:U:120.06V I:0.2018A P:24.000W PF:0.9906 Freq:60.01Hz UTHDi:0.00% ITHDi:0.00% KDisp:0 Lamp Flux:3249.18x1 lm										
NAME: ASD-LSF8-2A25WH					TYPE:			WEIGHT:		
SPEC.: 25W-5000K					DIM.:			SERIAL No.:		
MFR.: ASD Lighting Corp.					SUR.: 0.6*0.1m			Shielding Angle:		
ceiling/cavity	0.7	0.7	0.5	0.5	0.3	0.7	0.7	0.5	0.5	0.3
walls	0.5	0.3	0.5	0.3	0.3	0.5	0.3	0.5	0.3	0.3
working plane	0.2	0.2	0.2	0.2	0.2	0.2	0.2	0.2	0.2	0.2
Room dimensions	Viewed crosswise					Viewed endwise				
x = 2H y = 2H	18.0	19.5	18.4	19.8	20.2	16.9	18.3	17.3	18.7	19.1
3H	20.3	21.6	20.7	22.0	22.4	18.3	19.7	18.7	20.0	20.5
4H	21.5	22.8	21.9	23.2	23.6	18.9	20.1	19.3	20.5	21.0
6H	22.9	24.1	23.3	24.5	25.0	19.2	20.4	19.7	20.9	21.3
8H	23.6	24.8	24.1	25.2	25.7	19.3	20.5	19.8	20.9	21.4
12H	24.5	25.6	25.0	26.1	26.6	19.3	20.5	19.8	20.9	21.4
4H 2H	18.6	19.8	19.0	20.2	20.7	17.7	19.0	18.1	19.4	19.8
3H	21.0	22.2	21.5	22.6	23.1	19.4	20.5	19.9	21.0	21.5
4H	22.4	23.5	22.9	23.9	24.5	20.1	21.2	20.7	21.7	22.2
6H	24.0	24.9	24.5	25.4	26.0	20.7	21.6	21.2	22.1	22.7
8H	24.9	25.7	25.4	26.2	26.8	20.9	21.7	21.4	22.3	22.8
12H	25.9	26.7	26.4	27.2	27.8	21.0	21.8	21.5	22.3	22.9
8H 4H	22.8	23.6	23.3	24.1	24.7	20.9	21.7	21.4	22.2	22.8
6H	24.6	25.3	25.1	25.8	26.5	21.7	22.5	22.3	23.0	23.6
8H	25.6	26.3	26.2	26.9	27.5	22.1	22.7	22.7	23.3	23.9
12H	26.9	27.5	27.5	28.1	28.7	22.3	22.9	23.0	23.5	24.2
12H 4H	22.8	23.6	23.3	24.1	24.7	21.0	21.8	21.6	22.4	23.0
6H	24.7	25.3	25.3	25.9	26.5	22.1	22.7	22.7	23.3	24.0
8H	25.8	26.4	26.4	27.0	27.7	22.6	23.2	23.2	23.8	24.4
Variations with the observer position at spacings(CIE Pub.117):										
S = 1.0H	+ 0.1 / - 0.1					+ 0.1 / - 0.2				
1.5H	+ 0.2 / - 0.2					+ 0.2 / - 0.3				
2.0H	+ 0.2 / - 0.3					+ 0.2 / - 0.4				

CIE Pub.117, 3249 lm Total Lamp Luminous Flux Correct (8log(F/F0) = 4.1)  
 Area: 0.06 m2

C Range: 0 - 360DEG	γ Range: 0 - 180DEG
C Interval: 45.0DEG	γ Interval: 1.0DEG
Test Speed: HIGH	Test System:EVERFINE GO-2000A_V1 SYSTEM V2.00.488
Temperature:25.3°C	Humidity:65.0%
Operators:lianghaizhu-2	Test Distance:9.770m [K=1.0000]
Test Date:2024-11-25	Remarks:

**UTILIZATION FACTORS TABLE**

Test:U:120.06V I:0.2018A P:24.000W PF:0.9906 Freq:60.01Hz UTHDi:0.00% ITHDi:0.00% KDisp:0 Lamp Flux:3249.18x1 lm		
NAME: ASD-LSF8-2A25WH	TYPE:	WEIGHT:
SPEC.: 25W-5000K	DIM.:	SERIAL No.:
MFR.: ASD Lighting Corp.	SUR.: 0.6*0.1m	Shielding Angle:

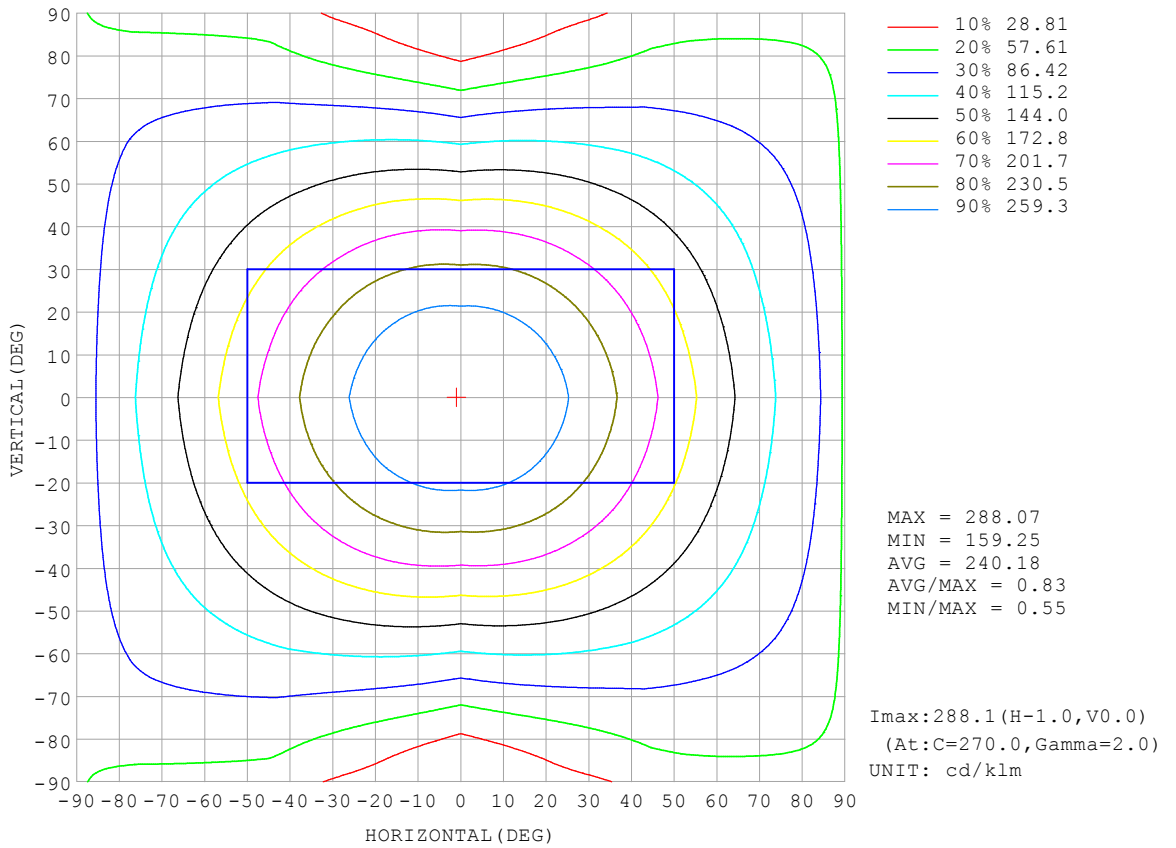
REFLECTANCE										
Ceiling	0.8	0.8	0.8	0.7	0.7	0.7	0.5	0.5	0.5	0
Walls	0.7	0.5	0.3	0.7	0.5	0.3	0.7	0.5	0.3	0
Working plane	0.2	0.2	0.2	0.2	0.2	0.2	0.2	0.2	0.2	0
ROOM INDEX	UTILIZATION FACTORS (PERCENT) $k(RI) \times RCR = 5$									
k = 0.60	53	41	33	52	40	33	50	40	33	26
0.80	62	50	42	61	49	42	59	48	41	34
1.00	70	58	50	68	57	50	66	58	49	41
1.25	77	65	57	75	64	57	72	62	56	47
1.50	82	71	63	80	70	62	76	67	61	52
2.00	89	79	72	87	77	70	82	74	68	59
2.50	93	84	77	91	82	76	85	79	73	62
3.00	97	88	82	94	86	80	89	82	77	66
4.00	101	94	88	98	92	86	92	87	83	71
5.00	104	98	93	101	95	91	95	90	86	74
ROOM INDEX	UF(total)									Direct
According to DIN EN 13032-2 2004			Suspended				SHRNOM = 1.25			

C Range: 0 - 360DEG  
 C Interval: 45.0DEG  
 Test Speed: HIGH  
 Temperature:25.3°C  
 Operators:lianghaizhu-2  
 Test Date:2024-11-25

γ Range: 0 - 180DEG  
 γ Interval: 1.0DEG  
 Test System:EVERFINE GO-2000A\_V1 SYSTEM V2.00.488  
 Humidity:65.0%  
 Test Distance:9.770m [K=1.0000]  
 Remarks:

**ISOCANDELA DIAGRAM**

Test:U:120.06V I:0.2018A P:24.000W PF:0.9906 Freq:60.01Hz UTHDi:0.00% ITHDi:0.00% KDisp:0 Lamp Flux:3249.18x1 lm		
NAME: ASD-LSF8-2A25WH	TYPE:	WEIGHT:
SPEC.: 25W-5000K	DIM.:	SERIAL No.:
MFR.: ASD Lighting Corp.	SUR.: 0.6*0.1m	Shielding Angle:

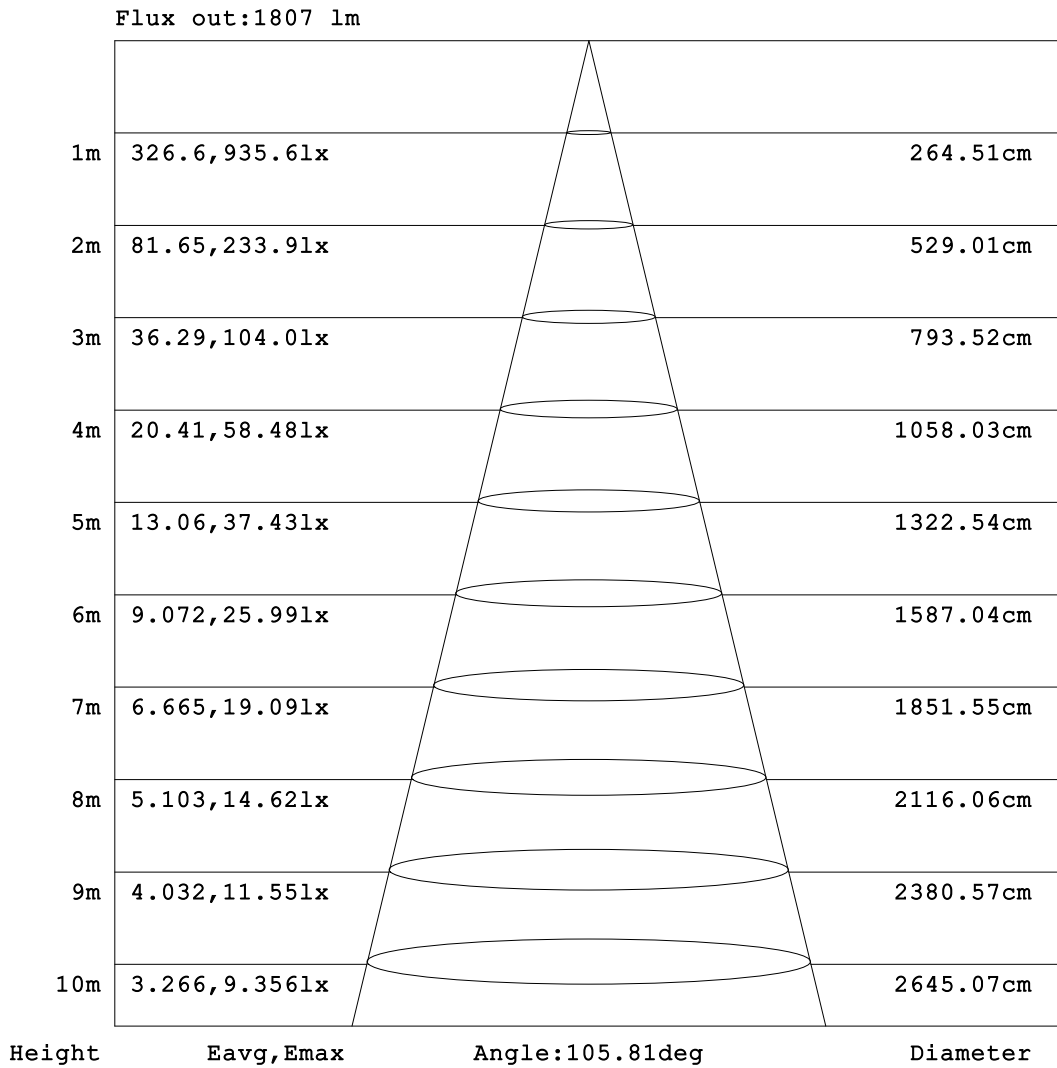


C Range: 0 - 360DEG  
 C Interval: 45.0DEG  
 Test Speed: HIGH  
 Temperature:25.3°C  
 Operators:lianghaizhu-2  
 Test Date:2024-11-25

γ Range: 0 - 180DEG  
 γ Interval: 1.0DEG  
 Test System:EVERFINE GO-2000A\_V1 SYSTEM V2.00.488  
 Humidity:65.0%  
 Test Distance:9.770m [K=1.0000]  
 Remarks:

**AAI Figure**

Test:U:120.06V I:0.2018A P:24.000W PF:0.9906 Freq:60.01Hz		
UTHDi:0.00% ITHDi:0.00% KDisp:0 Lamp Flux:3249.18x1 lm		
NAME: ASD-LSF8-2A25WH	TYPE:	WEIGHT:
SPEC.: 25W-5000K	DIM.:	SERIAL No.:
MFR.: ASD Lighting Corp.	SUR.: 0.6*0.1m	Shielding Angle:



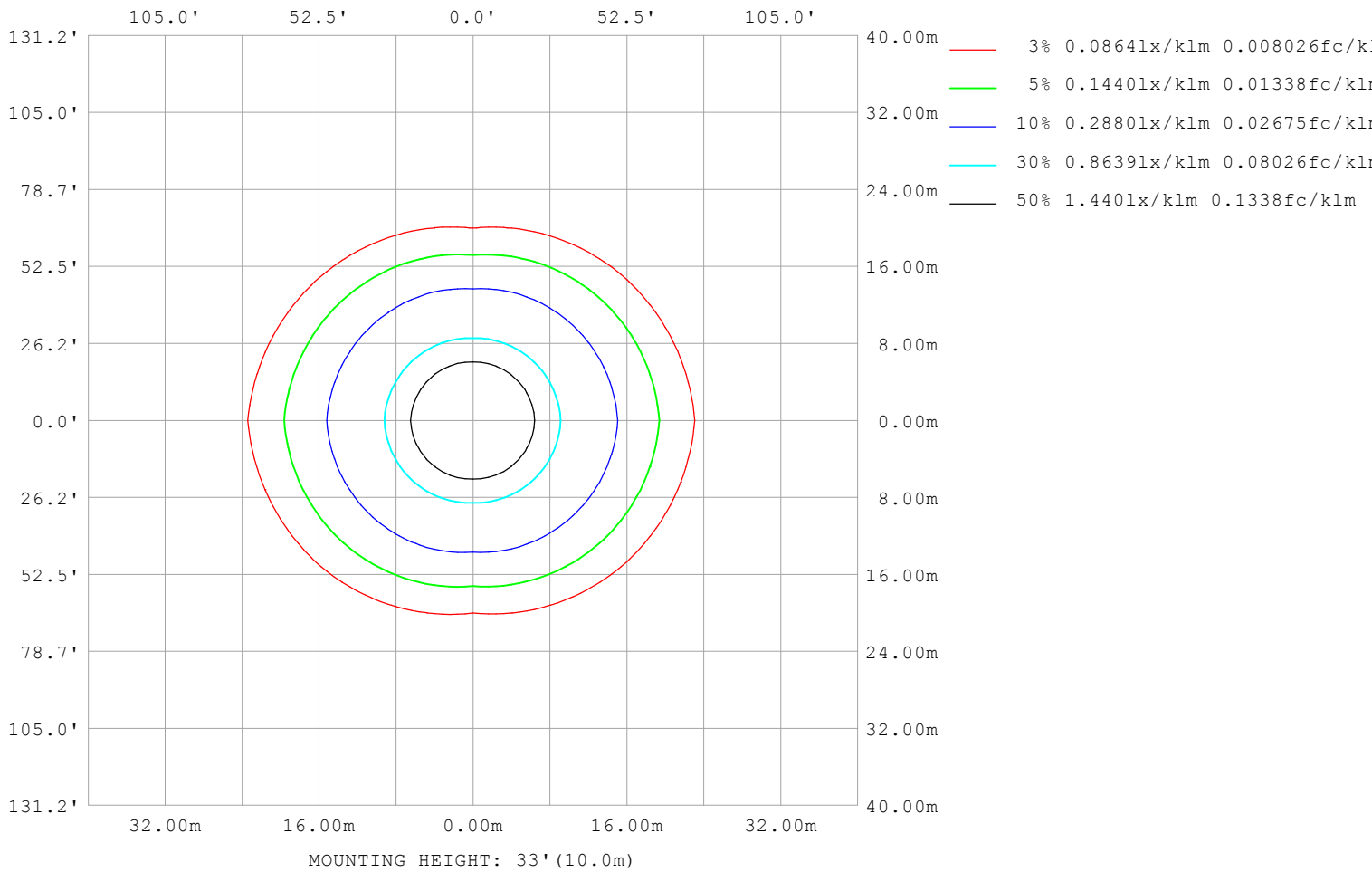
Note: The Curves indicate the illuminated area and the average illumination when the luminaire is at different distance.

C Range: 0 - 360DEG  
 C Interval: 45.0DEG  
 Test Speed: HIGH  
 Temperature: 25.3°C  
 Operators: lianghaizhu-2  
 Test Date: 2024-11-25

γ Range: 0 - 180DEG  
 γ Interval: 1.0DEG  
 Test System: EVERFINE GO-2000A\_V1 SYSTEM V2.00.488  
 Humidity: 65.0%  
 Test Distance: 9.770m [K=1.0000]  
 Remarks:

**ISOLUX DIAGRAM**

Test:U:120.06V I:0.2018A P:24.000W PF:0.9906 Freq:60.01Hz UTHDi:0.00% ITHDi:0.00% KDisp:0 Lamp Flux:3249.18x1 lm		
NAME: ASD-LSF8-2A25WH	TYPE:	WEIGHT:
SPEC.: 25W-5000K	DIM.:	SERIAL No.:
MFR.: ASD Lighting Corp.	SUR.: 0.6*0.1m	Shielding Angle:



C Range: 0 - 360DEG  
 C Interval: 45.0DEG  
 Test Speed: HIGH  
 Temperature:25.3°C  
 Operators:lianghaizhu-2  
 Test Date:2024-11-25

γ Range: 0 - 180DEG  
 γ Interval: 1.0DEG  
 Test System:EVERFINE GO-2000A\_V1 SYSTEM V2.00.488  
 Humidity:65.0%  
 Test Distance:9.770m [K=1.0000]  
 Remarks:

**LED Avg.L Report**

Test:U:120.06V I:0.2018A P:24.000W PF:0.9906 Freq:60.01Hz UTHDi:0.00% ITHDi:0.00% KDisp:0 Lamp Flux:3249.18x1 lm		
NAME: ASD-LSF8-2A25WH	TYPE:	WEIGHT:
SPEC.: 25W-5000K	DIM.:	SERIAL No.:
MFR.: ASD Lighting Corp.	SUR.: 0.6*0.1m	Shielding Angle:

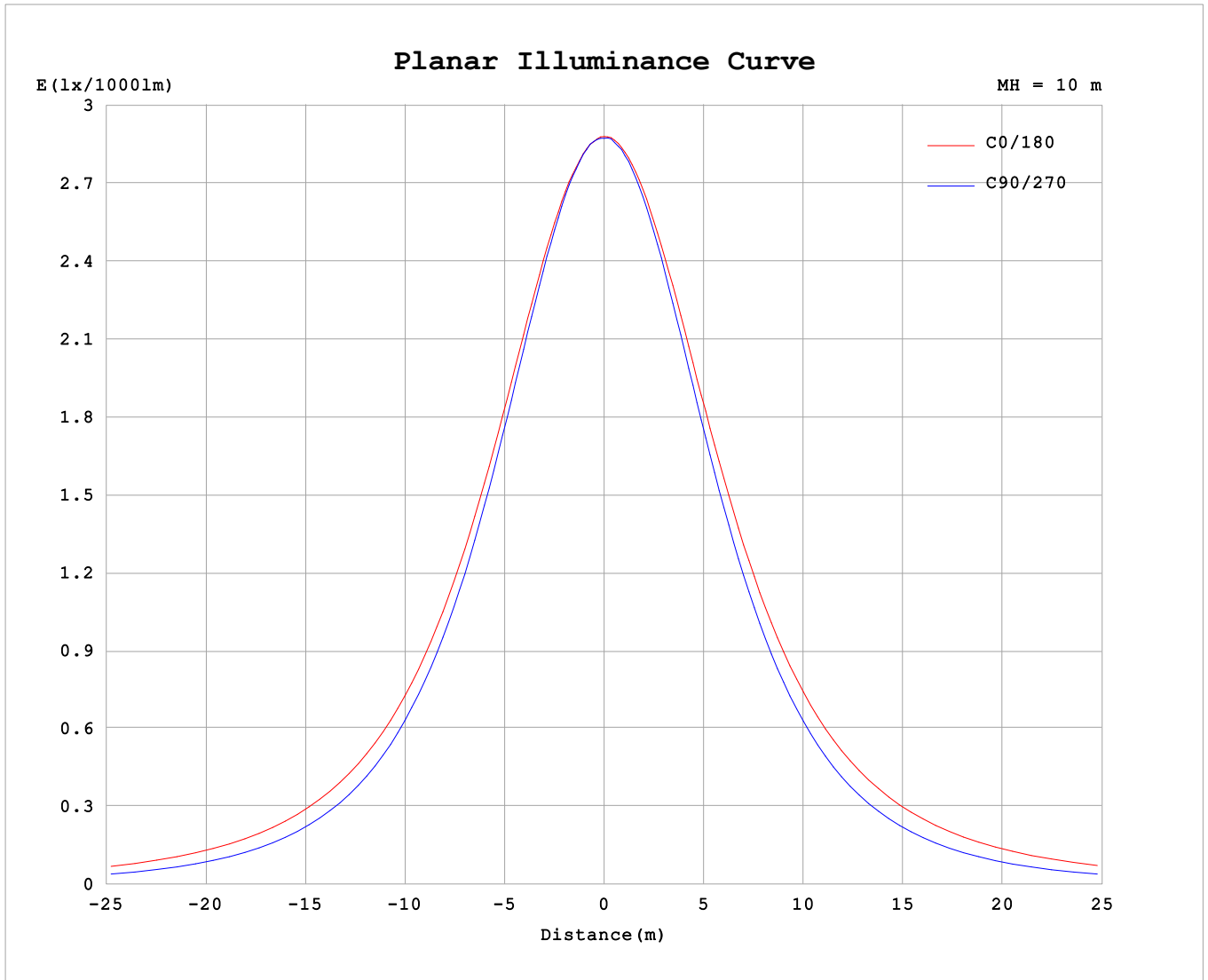
AvgL	cd/m2
L_0~180 (65) av	18529
L_0~180 (75) av	24085
L_0~180 (85) av	53896
L_90~270 (65) av	11457
L_90~270 (75) av	9257
L_90~270 (85) av	4822
L_45 (65) av	15215
L_45 (75) av	17915
L_45 (85) av	35852

Standard: GB/T 29293-2012

C Range: 0 - 360DEG  
 C Interval: 45.0DEG  
 Test Speed: HIGH  
 Temperature:25.3°C  
 Operators:lianghaizhu-2  
 Test Date:2024-11-25

γ Range: 0 - 180DEG  
 γ Interval: 1.0DEG  
 Test System:EVERFINE GO-2000A\_V1 SYSTEM V2.00.488  
 Humidity:65.0%  
 Test Distance:9.770m [K=1.0000]  
 Remarks:

**Planar Illuminance Curve**



C Range: 0 - 360DEG  
 C Interval: 45.0DEG  
 Test Speed: HIGH  
 Temperature: 25.3°C  
 Operators: lianghaizhu-2  
 Test Date: 2024-11-25

γ Range: 0 - 180DEG  
 γ Interval: 1.0DEG  
 Test System: EVERFINE GO-2000A\_V1 SYSTEM V2.00.488  
 Humidity: 65.0%  
 Test Distance: 9.770m [K=1.0000]  
 Remarks:

LUMINOUS DISTRIBUTION INTENSITY DATA

Test:U:120.06V I:0.2018A P:24.000W PF:0.9906 Freq:60.01Hz UTHDi:0.00% ITHDi:0.00% KDisp:0 Lamp Flux:3249.18x1 lm		
NAME: ASD-LSF8-2A25WH	TYPE:	WEIGHT:
SPEC.: 25W-5000K	DIM.:	SERIAL No.:
MFR.: ASD Lighting Corp.	SUR.: 0.6*0.1m	Shielding Angle:

Table--1

UNIT: cd/klm

C (DEG) \ γ (DEG)	0	45	90	135	180	225	270	315											
0	288	288	288	288	288	288	288	288											
5	286	287	287	287	287	286	286	286											
10	283	282	282	283	284	282	282	282											
15	277	276	274	276	278	276	274	275											
20	269	267	264	268	271	266	263	265											
25	260	255	251	256	261	255	249	254											
30	248	241	235	243	251	241	234	240											
35	235	226	218	228	238	226	217	225											
40	221	209	199	212	224	210	198	208											
45	205	191	179	194	209	192	178	190											
50	189	173	157	176	194	173	156	172											
55	174	154	135	158	178	155	134	153											
60	157	135	113	140	163	137	112	135											
65	142	117	89.8	122	148	119	89.0	117											
70	126	100	66.8	105	133	102	66.2	99.6											
75	112	84.0	44.5	89.0	119	85.9	44.0	83.5											
80	97.7	69.3	24.0	74.3	105	71.3	23.6	68.7											
85	84.3	56.0	7.91	61.2	89.2	58.2	7.61	55.4											
90	53.8	36.5	0.66	40.1	58.6	39.4	0.67	37.6											
95	45.7	28.9	0.73	32.5	50.7	32.1	0.82	30.0											
100	38.5	22.8	0.90	26.5	43.4	26.0	1.01	24.0											
105	32.1	17.9	1.21	21.6	36.9	21.1	1.29	19.0											
110	26.4	14.3	1.51	17.6	30.9	17.5	1.53	15.1											
115	21.7	11.7	1.71	15.2	25.9	14.4	1.73	12.3											
120	21.8	9.93	1.98	12.9	27.0	12.0	1.95	10.0											
125	17.7	8.64	2.27	11.0	22.0	10.4	2.19	8.65											
130	14.4	7.74	2.55	9.57	18.2	9.33	2.46	7.84											
135	12.0	7.18	2.83	8.64	15.1	7.94	2.71	7.18											
140	10.3	6.71	3.09	7.89	12.7	7.23	2.93	6.70											
145	9.03	5.87	3.31	7.18	10.4	7.00	3.15	6.06											
150	8.03	5.22	3.52	6.85	8.42	6.65	3.33	5.33											
155	7.16	4.75	3.69	6.52	7.50	6.15	3.50	4.88											
160	6.36	4.39	3.84	6.15	6.99	5.73	3.66	4.51											
165	5.67	4.04	4.10	5.42	6.70	5.57	3.87	4.14											
170	4.93	3.92	4.34	5.19	5.90	5.22	4.18	3.91											
175	3.90	3.93	4.46	5.06	4.43	5.07	4.46	4.02											
180	4.15	4.63	4.62	4.59	4.16	4.64	4.62	4.58											

C Range: 0 - 360DEG  
 C Interval: 45.0DEG  
 Test Speed: HIGH  
 Temperature:25.3℃  
 Operators:lianghaizhu-2  
 Test Date:2024-11-25

γ Range: 0 - 180DEG  
 γ Interval: 1.0DEG  
 Test System:EVERFINE GO-2000A\_V1 SYSTEM V2.00.488  
 Humidity:65.0%  
 Test Distance:9.770m [K=1.0000]  
 Remarks: