



LED SEAMLESS VAPOR PROOF FIXTURE

- ▶ **DESIGN** - LED SEAMLESS VAPOR PROOF FIXTURE has a waterproof polycarbonate body with a frosted lens, making this fixture impact resistant. Design of the fixture allows to connect multiple fixtures together. It is designed to operate on 120-277V circuits with a 0-10V dimmable driver.
- ▶ **BATTERY BACK-UP** - The built-in battery back-up provide 90 minutes of power in case of emergency.
- ▶ **COLOR AND POWER SELECTABLE** - You can choose either a 3,500K neutral white, 4,000K cool white or 5,000K daylight color temperature, and change the power with a simple switch.
- ▶ Surge protection 6kV protects the fixture from voltage spikes and current surges.
- ▶ **APPLICATION** - Perfect commercial or industrial solution for parking garages, carports, stairwells, tunnels, car washes, and many other applications. It is also Wet location rated.
- ▶ **ADVANTAGES** - With calculated lifespan up to 80 000 hours, these fixtures are made to last decades under normal operation! ASD provides a 5-year limited warranty along with UL and DLC Standard certifications to guarantee top quality products and safety!



PRODUCT PRESENTATION:

Model	Type	Power	Voltage	Dimming	Lumens	CCT	Dimensions	Pre-installed
ASD-LVP2SM-2A28AC	2 ft	16/24/28 W	120-277 V	0-10 V	3,019 lm	3,500/4,000/5,000 K	23-9/16" x 3-9/16" x 3-3/16"	-
ASD-LVP2SM-4A56AC	4 ft	32/48/56 W	120-277 V	0-10 V	7,253 lm	3,500/4,000/5,000 K	48-1/8" x 3-9/16" x 3-3/16"	-
ASD-LVP2SM-8A120AC	8 ft	64/96/120 W	120-277 V	0-10 V	17,359lm	3,500/4,000/5,000 K	94-3/4" x 3-9/16" x 3-3/16"	-
LVP2SM-EM WITH BATTERY BACK-UP								
ASD-LVP2SM-4A56AC-10EM	4 ft	32/48/56 W	120-277 V	0-10 V	7,140 lm	3,500/4,000/5,000 K	48-1/8" x 3-9/16" x 3-3/16"	Battery back-up 10W
ASD-LVP2SM-8A120AC-20EM	8 ft	64/96/120 W	120-277 V	0-10 V	17,325 lm	3,500/4,000/5,000 K	94-3/4" x 3-9/16" x 3-3/16"	Battery back-up 20W
LVP2SM WITH MOTION SENSOR								
ASD-LVP2SM-4A56AC-MS	4 ft	32/48/56 W	120-277 V	0-10 V	6,330 lm	3,500/4,000/5,000 K	47-3/16" x 3-9/16" x 3-3/16"	Motion sensor

For detailed luminous flux information please refer to Annex 1, page 2

ORDERING INFORMATION

Model	UPS	Pcs. per carton	Carton size	Carton weight	GTIN 14
ASD-LVP2SM-2A28AC	810128117692	9	27.6" x 11.8" x 13"	35.2 lbs	10810128117699
ASD-LVP2SM-4A56AC	810050735513	9	51.2" x 11.8" x 13"	55.9 lbs	10810050735510
ASD-LVP2SM-8A120AC	810050735520	6	98" x 11.8" x 8.9"	58.7 lbs	10810050735527
LVP2SM-EM WITH BATTERY BACK-UP					
ASD-LVP2SM-4A56AC-10EM	810050735537	9	51.2" x 11.8" x 13"	60.8 lbs	10810050735534
ASD-LVP2SM-8A120AC-20EM	810050735544	6	98" x 11.8" x 8.9"	69.3 lbs	10810050735541
LVP2SM WITH MOTION SENSOR					
ASD-LVP2SM-4A56AC-MS	810128117685	9	51.2" x 11.8" x 13"	57.2 lbs	10810128117682

For most up-to-date spec sheets please refer to asd-lighting.com



LED SEAMLESS VAPOR PROOF FIXTURE

PRODUCT SPECIFICATIONS:

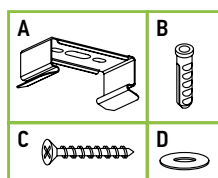
Construction & Materials		Electrical system	
Housing	PC	Input voltage	120-277 V
Lens	PC	Max input current	ASD-LVP2SM-2A28AC 0.28 A
Finish	White		ASD-LVP2SM-4A56AC 0.55 A
Weight	ASD-LVP2SM-2A28AC		ASD-LVP2SM-8A120AC 1.15 A
	ASD-LVP2SM-4A56AC		ASD-LVP2SM-4A56AC-10EM 0.55 A
	ASD-LVP2SM-8A120AC		ASD-LVP2SM-8A120AC-20EM 1.15 A
	ASD-LVP2SM-4A56AC-10EM		ASD-LVP2SM-4A56AC-MS 0.42 A
	ASD-LVP2SM-8A120AC-20EM	ASD-LVP2SM-2A28AC 65 A (0.75 S)	
ASD-LVP2SM-4A56AC-MS	ASD-LVP2SM-4A56AC 40 A (0.46 S)		
Environmental system		Inrush current (Action time)	ASD-LVP2SM-8A120AC 80 A (0.58 S)
Work environment	Suitable for Damp location, IP66		ASD-LVP2SM-4A56AC-10EM 40 A (0.46 S)
Operating temperature	-40°F to 122°F (-20°C to 50°C)		ASD-LVP2SM-8A120AC-20EM 80 A (0.58 S)
L-70 Life	R >54,000 hrs; C > 80,000 hrs		ASD-LVP2SM-4A56AC-MS 65 A (0.75 S)
Optical system		Off state power	0W
Color temperature	3CCT switch (3,500/4,000/5,000 K), 5,000 K by default	Power consumption	ASD-LVP2SM-2A28AC 16/24/28W
CRI	> 80		ASD-LVP2SM-4A56AC 32/48/56W
Dimming compatible controls			ASD-LVP2SM-8A120AC 64/96/120W
Brand	Lutron Eaton Legrand Leviton		ASD-LVP2SM-4A56AC-10EM 32/48/56W
Models	DVSTV-WH DF10P-C1 H4FBL3PW IP710-DLZ/NFTV		ASD-LVP2SM-8A120AC-20EM 64/96/120W
		Power factor	> 0.9
		Output voltage	ASD-LVP2SM-2A28AC 90-130 V
			ASD-LVP2SM-4A56AC 93-115 V
			ASD-LVP2SM-8A120AC 95-107 V
			ASD-LVP2SM-4A56AC-10EM 93-115 V
			ASD-LVP2SM-8A120AC-20EM 95-107 V
		Max output current	ASD-LVP2SM-4A56AC-MS 90-130 V
			ASD-LVP2SM-2A28AC 0.75 A
			ASD-LVP2SM-4A56AC 0.46 A
			ASD-LVP2SM-8A120AC 1.05 A
			ASD-LVP2SM-4A56AC-10EM 0.46 A
		ASD-LVP2SM-8A120AC-20EM 1.05 A	
		ASD-LVP2SM-4A56AC-MS 0.75 A	
		Surge protection DM/CM	4 kV / 6 kV
Regular and voluntary certifications			
5-year limited warranty			
DesignLights Consortium (DLC) listed (Classification: Standard)			
UL certified E473804			

MAX QUANTITY OF FIXTURES TO BE CONNECTED TOGETHER:

Linkable Quantities Depending on Voltage	Model								
	2ft			4ft			8ft		
	16 W	24 W	28 W	32 W	48 W	56 W	64 W	96 W	120 W
120V	31	20	17	15	10	9	7	5	4
277V	75	50	42	37	25	21	18	12	9

PACKAGE CONTENTS:

Description	Quantity
LED Seamless Vapor Proof Fixture	1
Mounting bracket (A)	2
Mounting screws (B)	4
Plastic anchor (C)	4
Flat washer (D)	4
Box	1



ANNEX 1

Model	Watts	3,500 K	4,000 K	5,000 K
ASD-LVP2SM-2A28AC	16W	1,947 lm	2,076 lm	2,013 lm
	24W	2,714 lm	2,957 lm	2,801 lm
	28W	2,940 lm	3,212 lm	3,019 lm
ASD-LVP2SM-4A56AC	32W	4,706 lm	4,719 lm	4,471 lm
	48W	6,307 lm	6,427 lm	6,155 lm
	56W	6,440 lm	7,721 lm	7,253 lm
ASD-LVP2SM-8A120AC	64W	9,520 lm	9,664 lm	9,258 lm
	96W	13,847 lm	14,579 lm	13,773 lm
	120W	17,626 lm	18,168 lm	17,359 lm
ASD-LVP2SM-4A56AC-10EM	32W	4,755 lm	4,607 lm	4,772 lm
	48W	6,251 lm	6,456 lm	6,109 lm
	56W	6,440 lm	7,709 lm	7,140 lm
ASD-LVP2SM-8A120AC-20EM	64W	9,520 lm	9,722 lm	9,414 lm
	96W	14,131 lm	14,515 lm	14,025 lm
	120W	17,666 lm	18,144 lm	17,325 lm
ASD-LVP2SM-4A56AC-MS	32W	4,312 lm	4,515 lm	4,291 lm
	48W	5,694 lm	6,055 lm	5,635 lm
	56W	6,157 lm	6,755 lm	6,330 lm

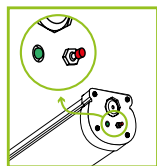
For most up-to-date spec sheets please refer to asd-lighting.com



LED SEAMLESS VAPOR PROOF FIXTURE

BUILT-IN BATTERY BACK-UP INFORMATION

Model	Battery capacity	Max emergency output power	EM lumens	Emergency current	Emergency operation time	Battery voltage	Full charge/discharge cycles
ASD-LVP2SM-4A56AC-10EM	3,000 mA * 4	10W	1,246 lm	80 mA	≥ 90 minutes	7.4 V	500 cycles
ASD-LVP2SM-8A120AC-20EM	4,000 mA * 6	20W	2,301 lm	170 mA	≥ 90 minutes	11.1 V	500 cycles



Test button operation: Press test button to change from charging mode to emergency mode. Release test button to go back to the normal mode.

Back-up mode operation: When green light is on, backup battery is charging in AC mode. When it detects AC power outage, fixture will switch to back-up mode and indicator light will turn off.

Specifications	Model: BLD-CM20H-1500400
Input voltage	100-277 V 50/60 Hz
Warranty	5 years
Indicator light	Illuminated test switch, indicator light
Battery	Li-ion
Battery charging current	250 mA
Charging time	≥ 24 hours

BUILT-IN MOTION SENSOR INFORMATION

REMOTE CONTROL **ASD-06RC** sold separately



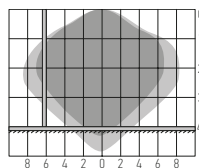
Button	Remarks	Button	Remarks	Button	Remarks
ON/OFF ON/OFF	Turn the sensor ON/OFF.	M H Mounting height	Adjust detection area/sensitivity levels according to real installation situations, higher or lower.	Up Up	The main functional buttons to adjust the factors to desired level.
Auto Auto	Enter "sensor mode" and perform previous settings.	Send Send	Memorize and send out the previous setting of individual parameters.	Down Down	Press + - button to dim light directly auto in non-detection mode.
Reset Reset	Enter "sensor mode" and perform the default settings.	☂ Detection range	Also known as "sensitivity", 100 % means the highest sensitivity and longest distance. Use this button and the + - buttons to adjust.	CCT CCT selectable	Not applicable to this product.
Scenes Scenes	Shows current settings saved in remote.	☀ Daylight sensor	The preset lux level at which motion will be detected. Use this button and the + - buttons to adjust.	POWER Power	Adjust brightness in both ON/OFF mode & sensor mode, minimum 10%, max 100%, each time this button is pressed it changes by 5%.
Start Start	Press this to begin scene setup.	💡 Stand-by dimming	After hold time, the light will dim from 100 % to optional standby dimming levels. Use this button and the + - buttons to adjust.	Reserved Reserved button	Not applicable to this product.
Memory Memory	Saves the scene settings.	⌚ Hold time	The period that light will stay illuminated 100 % after no motion is detected. Use this button and the + - buttons to adjust.	☀ Daylight harvesting	Daylight harvesting function enabled or disabled.
Apply Apply	Applies current scene settings to the fixture.	⌚ Stand-by period	The period after holdtime, during which the light keeps standby dimming level. Use this button and the + - buttons to adjust.	Test Test button	Press this button to test the sensor; it will temporarily change the hold time to 2s. This setting cannot be saved.



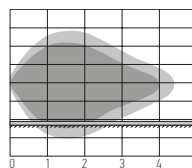
ASD-08MW



ASD-06RC
Remote control



Ceiling mounted



Wall mounted

Highest mounting height is 13.1 ft (4 m). This figure indicates the maximum distance at the highest mounting height with 100 % sensitivity.

■ Well detected area
□ Possibly detected area

Specifications		Default setting
Detection area	25 %/50 %/75 %/100 %	100 %
Hold time	5 s/30 s/1 min/2 min/3 min/5 min/10 min/15 min/20 min/25 min/30 min/45 min/60 min/90 min/120 min	10 min
Daylight threshold	2 lux (0.2 fc)/10 lux (0.9 fc)/30 lux (2.8 fc)/50 lux (4.7 fc)/80 lux (7.4 fc)/120 lux (11.2 fc)/200 lux (18.6 fc)/250 lux (23.2 fc)/300 lux (27.9 fc)/350 lux (32.5 fc)/400 lux (37.2 fc)/disable	Disable
Standby period	0 s/5 s/30 s/1 min/2 min/3 min/5 min/10 min/15 min/20 min/25 min/30 min/45 min/60 min/+ ∞	0 s
Standby dimming level	10 %/20 %/30 %/50 %	10 %
Operating voltage	10 - 15 V	-
Operating current	≥ 40 mA	-
Mounting height	max 13.1 ft (4 m)	-
Detection range	> 65 ft (20 m)	-
Operating frequency	5.8 GHz ± 75 MHz	-
Transmitting power	< 0.3 mW	-

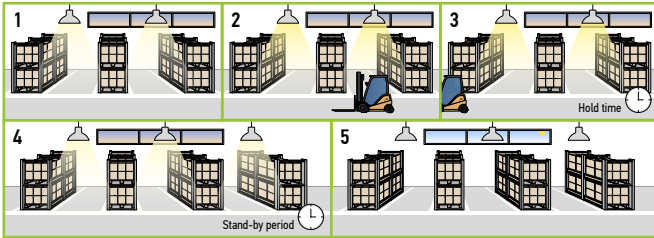
For most up-to-date spec sheets please refer to asd-lighting.com



LED SEAMLESS VAPOR PROOF FIXTURE

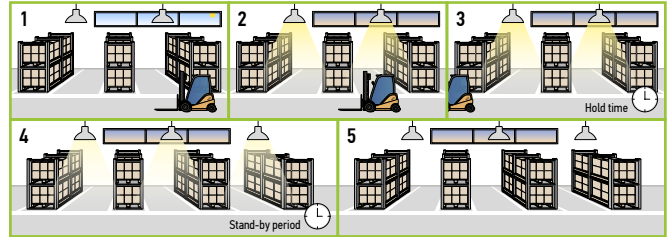
WITH DUSK/DAWN FUNCTION:

1. With insufficient ambient brightness, sensor turns on light and keeps it at standby dimming level even if there is no motion or presence.
2. When sensor detects motion or presence it will bring the light level up to 100 %.
3. After motion is no longer detected, fixture remains at 100 % for holdtime.
4. After pre-set hold time period it will dim to standby dimming level again and always keep it.
5. With sufficient ambient brightness, sensor will turn OFF light automatically.



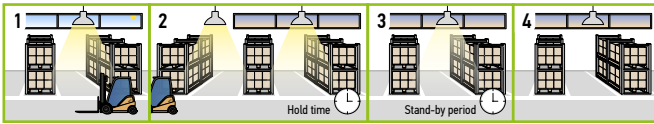
WITH DAYLIGHT THRESHOLD:

1. With sufficient daylight, the light remains OFF even after motion is detected.
2. With insufficient daylight, the sensor turns light ON when motion is detected.
3. After there's no motion detected, the sensor keeps light ON 100 % for holdtime.
4. After holdtime, sensor dims light to standby dimming level for standby period. If the standby period has been set as 0s, sensor turns light OFF automatically after holdtime.
5. The sensor turns OFF light automatically after the standby period when there's no motion detected.



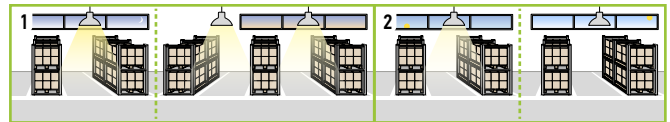
WITH DAYLIGHT DISABLED:

1. Sensor turns ON light when motion is detected.
2. Light will stay on after detecting motion for the desired hold time.
3. Sensor dims light to standby dimming level after hold time if there is still no motion.
4. Sensor turns OFF light after standby period.



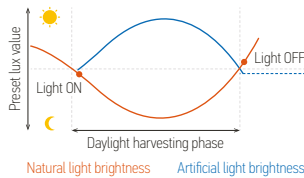
DAYLIGHT HARVESTING:

1. When ambient brightness is lower than preset lux level, sensor will turn on light automatically and keep dimming according to the change of the ambient brightness. As it gets darker outside the fixtures will brighten, and as it gets brighter outside the fixtures will dim down.
2. When the ambient brightness exceeds the preset lux level, the light will turn OFF.



DAYLIGHT HARVESTING SETTING:

1. Adjust "daylight" value higher than 50lux.
2. Preset "standby period" 0s.
3. Press "daylight harvesting" button on remote control to activate.



For most up-to-date spec sheets please refer to asd-lighting.com



LED SEAMLESS VAPOR PROOF FIXTURE

INSTALLATION GUIDE

IMPORTANT SAFETY INFORMATION:

Please read all the instructions below before installation!

- ▶ Make sure that the supply voltage corresponds to the rated product voltage.
- ▶ The product must be installed by a qualified electrician in accordance with the National Electrical Code and corresponding local codes.
- ▶ If the product is damaged, do not use it.
- ▶ All wiring connections should be capped with UL approved wire connectors.
- ▶ For surface mount there are two stainless steel brackets included.
- ▶ This fixture is intended to be connected to a properly installed and grounded UL listed junction box with suitable strain relief means for power cord. The junction box is not included, should be purchased separately.

⚠ WARNING

Risk of personal injury – read and follow all warnings and installation instructions. Keep or give to the owner for future reference.

Risk of cuts: Wear gloves to prevent cuts or abrasions when removing from carton, handling, installing, and maintaining this product.

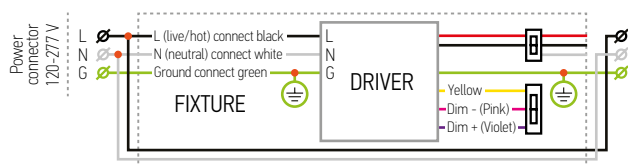
Risk of electric shock: This product must be installed in accordance with the applicable installation code by a person familiar with the construction and operation of the product and the hazards involved.

Risk of Fire: Minimum 194°F supply conductors. Consult a qualified electrician to ensure correct branch circuit conductor.

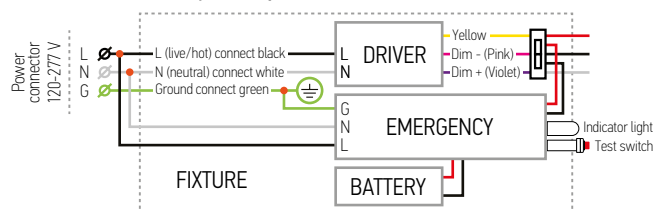
ASD® assumes no responsibility for claims arising out of improper or careless installation or handling of this product.

ELECTRICAL SCHEMATIC DIAGRAM:

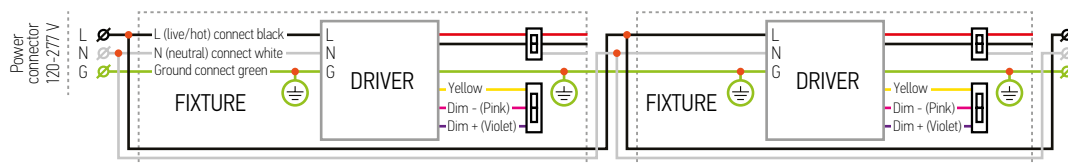
LVP2SM



LVP2SM-EM with battery back-up

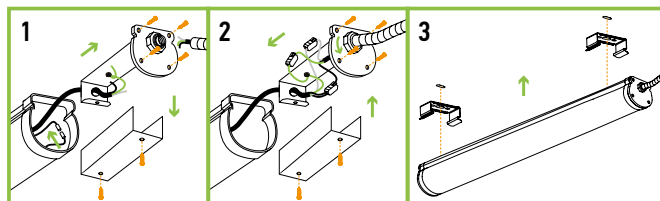


LVP2SM multiple fixture connection



INSTALLATION STEPS:

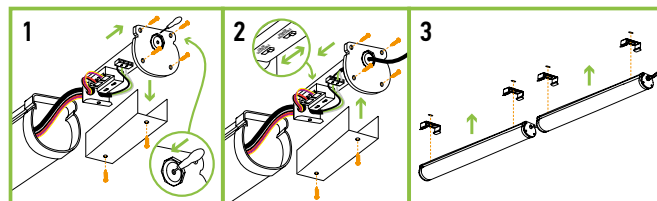
1. Remove the four screws off of the end-cap. Pull out the end-cap along with the junction box. Remove the cover of the junction box. The battery back-up will be unplugged when received, plug in battery back-up and the fixture using connector.
2. Insert the power cord into the junction box through the IP65 plug*. Connect the wires: Black to Black, White to White, Green to Green. Choose power output and color temperature needed using the switch. Close the cover of the junction box, insert it back into the fixture, tighten the screws of the end-cap.
3. Secure the fixtures to the ceiling/wall with mounting brackets.



* Note: plug suitable for up to 1/2" wires.

CONNECTING MULTIPLE FIXTURES:

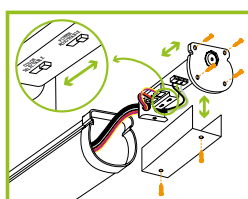
1. Remove the four screws off of the end-cap, pull out the end-cap along with the junction box, remove the cover of the junction box and remove the small cut-hole in the gasket.
2. Insert the power cord from the other fixture into the junction box. Connect the wires: Black to Black, White to White, Green to Green. Choose power output and color temperature using the switch. Close the cover of the junction box, insert it back into the fixture, tighten the screws of the end-cap.
3. Secure the fixtures to the ceiling/wall with mounting brackets.



* Multiple fixtures with different sizes and wattages can be linked together, the total wattage must not exceed 500W (120V) / 1200W (277V).

POWER AND COLOR TEMPERATURE SETTINGS:

Open the end-cap on the gasket side, pull out and open the junction box and use the switch to adjust power output and color temperature. Then, close junction box, slide it back into the fixture and tighten the screws on the end-cap.



For most up-to-date spec sheets please refer to asd-lighting.com