



# LED FIRE RATED COMMERCIAL DOWNLIGHT

## CFR series

- ▶ **DESIGN** - FIRE RATED LED COMMERCIAL DOWNLIGHT has a reinforced, heat resistant steel body, a 2-hour fire resistance rating, anti-glare PC lens, spring-loaded clips and 1.6 ft cord in metal hose. It is designed to operate on 120-277V circuits with a 0-10V dimmable driver.
- ▶ **COLOR AND POWER SELECTABLE** - You can choose either a 2700K soft white, 3000K warm white, 3500K neutral white, 4000K cool white, or 5000K daylight color temperature, and change the power with a simple switch.
- ▶ **CRI90+** - Rating provides rich and natural colors and keeps your space looking and feeling vibrant. True bright colors also improve your mood and general health.
- ▶ **INSTALLATION** - This fixture is IC rated so there is no can or any other housing required. It is also Wet Locations rated, making it perfect for any spaces with humidity requirements. Perfect for retail, hospitality, or any other commercial space with a high ceiling.
- ▶ **ADVANTAGES** - With a lifespan of 50,000 hours, these fixtures are made to last decades under normal operation! ASD provides a 5-year limited warranty along with Energy Star certification to guarantee top quality products and safety!


 Finish: 

## PRODUCT PRESENTATION:

Model	Power	Voltage	Dimming	Lumens	CCT	Finish	Dimensions	Certification
ASD-CFR-6A18WH	10/12/14/16/18 W	120-277V	0-10V	2,111lm	2,700/3,000/3,500/4,000/5,000 K	White	8-1/4" x 8-1/4" x 3-1/4"	ETL(5029309), ES, T24, JA8
ASD-CFR-8A25WH	13/16/19/22/25 W	120-277V	0-10V	2,975lm	2,700/3,000/3,500/4,000/5,000 K	White	10-1/16" x 10-1/16" x 3-1/2"	ETL(5029309), ES, T24, JA8

## ORDERING INFORMATION

Model	Product dimensions	Weight	Pcs. per carton	Carton size	Carton weight	UPC	GTIN 14
ASD-CFR-6A18WH	8-1/4" x 8-1/4" x 3-1/4"	1.9 lbs(0.9kg)	4	18.70" x 9.76" x 9.53"	10.8 lbs	81019020261	10810190202613
ASD-CFR-8A25WH	10-1/16" x 10-1/16" x 3-1/2"	2.3 lbs(1.0kg)	4	21.85" x 11.34" x 10.31"	12.3 lbs	81019020262	10810190202620

## ACCESSORIES:

Model	Description	UPC	Pcs. (pack) per carton	Carton size	Carton weight	GTIN 14 in carton
BLD-HM08D	Battery back-up kit 8W	810128111508	10	17.1" x 14.6" x 11"	19.6 lbs	10810128111505
BLD-HM15D	Battery back-up kit 15W	810050734882	10	17.8" x 13.5" x 9.5"	25.1 lbs	10810050734889
ASD-MPLR-346-FA-6PACK	New construction flat mounting plate with asymmetric round holes 3-4-6"	810050739344	24 (6)	14.4" x 9.8" x 3.2"	18.1 lbs	10810050739341
ASD-MPLR18-346-FA-6PACK	New construction flat mounting plate 18" with asymmetric round holes 3-4-6"	810128112826	24 (6)	18.9" x 9.8" x 3.2"	32.9 lbs	10810128112823
ASD-MPLR-81012-FA-6PACK	New construction flat mounting plate with asymmetric round holes 8-10-12"	810128111553	24 (6)	19.5" x 14.2" x 3.2"	37.2 lbs	10810128111550
ASD-MPLR-346-FS-6PACK	New construction flat mounting plate with symmetric round holes 3-4-6"	810050739351	24 (6)	27" x 9.1" x 3.2"	21 lbs	10810050739358
ASD-MPLR-81012-FS-6PACK	New construction flat mounting plate with symmetric round holes 8-10-12"	810128111577	24 (6)	27" x 13.8" x 3.2"	42.3 lbs	10810128111574
ASD-MPLR-346-SC-6PACK	New construction mounting plate with round holes and sliding clips 3-4-6"	810050739337	12 (6)	17.3" x 11.9" x 13.4"	17 lbs	10810050739334
ASD-MPLR-81012-SC-6PACK	New construction mounting plate with round holes and sliding clips 8-10-12"	810128111607	12 (6)	21.3" x 17.5" x 15.6"	24 lbs	10810128111604

For most up-to-date spec sheets please refer to [asd-lighting.com](http://asd-lighting.com)

ASD LIGHTING CORP

E-mail: [orders@asd-lighting.com](mailto:orders@asd-lighting.com) | Web site: [www.asd-lighting.com](http://www.asd-lighting.com)





# LED FIRE RATED COMMERCIAL DOWNLIGHT

CFR series

## TECHNICAL PARAMETERS:

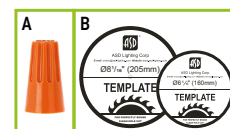
Model	Max input current	Work environment	Operating temperature	Power factor	Beam Angle	Surge protection	Housing	Lens	CRI
ASD-CFR-6A18WH	0.23A	Wet location	-4°F to 113°F (-20°C to 45°C)	>0.9	97°	2kV	Aluminum	PC	>90
ASD-CFR-8A25WH	0.33A	Wet location	-4°F to 113°F (-20°C to 45°C)	>0.9	102°	2kV	Aluminum	PC	>90

## DIMMING COMPATIBLE CONTROLS:

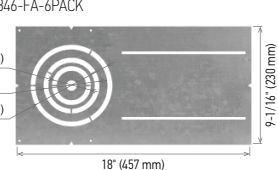
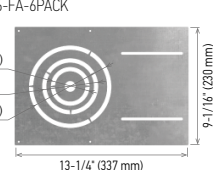
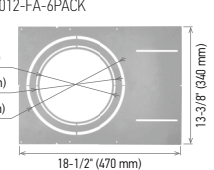
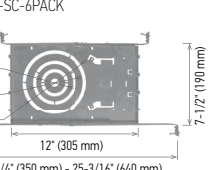

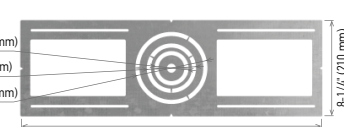

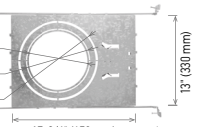
Dimming compatible controls			
Brand	Lutron		Legrand
Models	RMJS-8T-DV-B	MS-Z101-WH	RH4FBL3PW
	Diva DVSTV		

## PACKAGE CONTENTS:

Description	Quantity
LED Commercial Downlight	1
Wire nut (A)	5
Template for 6 or 8 inch (B)	1
Box	1



## ACCESSORIES (sold separately):

<b>New construction flat mounting plate 18" with asymmetric round holes 3-4-6"</b> ASD-MPLR18-346-FA-6PACK 	<b>New construction flat mounting plate with asymmetric round holes 3-4-6"</b> ASD-MPLR-346-FA-6PACK 	<b>New construction flat mounting plate with asymmetric round holes 8-10-12"</b> ASD-MPLR-81012-FA-6PACK 	<b>New construction mounting plate with round holes and sliding clips 3-4-6"</b> ASD-MPLR-346-SC-6PACK 
<b>Battery back-up kit</b>  <b>8W</b> BLD-HM08D <b>15W</b> BLD-HM15D	<b>New construction flat mounting plate with symmetric round holes 3-4-6"</b> ASD-MPLR-346-FS-6PACK 	<b>New construction flat mounting plate with symmetric round holes 8-10-12"</b> ASD-MPLR-81012-FS-6PACK 	<b>New construction mounting plate with round holes and sliding clips 8-10-12"</b> ASD-MPLR-81012-SC-6PACK 

## ACCESSORY COMPATIBILITY LIST:

Accessories	Models	ASD-CFR	
		6"	8"
<b>Battery back-up kit 8W</b> BLD-HM08D		•	•
<b>Battery back-up kit 15W</b> BLD-HM15D		•	•
<b>New construction flat mounting plate with asymmetric round holes 3-4-6"</b> ASD-MPLR-346-FA-6PACK		•	
<b>New construction flat mounting plate 18" with asymmetric round holes 3-4-6"</b> ASD-MPLR18-346-FA-6PACK		•	
<b>New construction flat mounting plate with asymmetric round holes 8-10-12"</b> ASD-MPLR-81012-FA-6PACK			•
<b>New construction flat mounting plate with symmetric round holes 3-4-6"</b> ASD-MPLR-346-FS-6PACK		•	
<b>New construction flat mounting plate with symmetric round holes 8-10-12"</b> ASD-MPLR-81012-FS-6PACK			•
<b>New construction mounting plate with round holes and sliding clips 3-4-6"</b> ASD-MPLR-346-SC-6PACK		•	
<b>New construction mounting plate with round holes and sliding clips 8-10-12"</b> ASD-MPLR-81012-SC-6PACK			•

For most up-to-date spec sheets please refer to [asd-lighting.com](http://asd-lighting.com)

ASD LIGHTING CORP

E-mail: [orders@asd-lighting.com](mailto:orders@asd-lighting.com) | Web site: [www.asd-lighting.com](http://www.asd-lighting.com)





# LED FIRE RATED COMMERCIAL DOWNLIGHT

CFR series

## INSTALLATION GUIDE

### IMPORTANT SAFETY INFORMATION:

Please read all the instructions below before installation!

- ▶ Make sure that the supply voltage corresponds to the rated product voltage.
- ▶ The product must be installed by a qualified electrician in accordance with the National Electrical Code and corresponding local codes.
- ▶ If the product is damaged, do not use it.

### INSTALLATION STEPS:

1. Use template to cut an appropriate sized hole. Before inserting the fixture into the mounting surface opening, choose power and color temperature with a simple switch.
2. Connect the wires using wire nuts: Black to Black, White to White, Green to Green.
3. Fold up the two spring mounting tabs and release as the fixture is placed into the mounting surface. Ensure that the spring mounting tabs have securely mounted the fixture so that the front trim is flush against the mounting surface.



### ⚠ WARNING

**Risk of personal injury** – read and follow all warnings and installation instructions. Keep or give to the owner for future reference.

**Risk of cuts:** Wear gloves to prevent cuts or abrasions when removing from carton, handling, installing, and maintaining this product.

**Risk of electric shock:** This product must be installed in accordance with the applicable installation code by a person familiar with the construction and operation of the product and the hazards involved.

**Risk of Fire:** Minimum 194°F supply conductors. Consult a qualified electrician to ensure correct branch circuit conductor.

ASD® assumes no responsibility for claims arising out of improper or careless installation or handling of this product.

### MOUNTING PLATE INSTALLATION

ASD-MPLR-346-FA

ASD-MPLR18-346-FA

ASD-MPLR-81012-FA

ASD-MPLR-346-FS

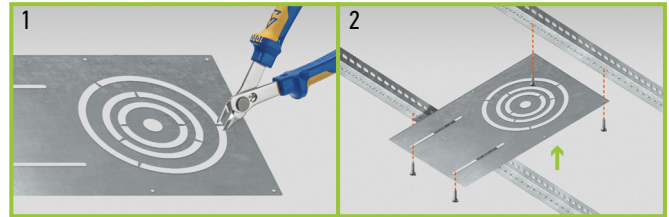
ASD-MPLR-81012-FS

ASD-MPLR-346-SC

ASD-MPLR-81012-SC

**sold separately:**

1. Remove the metal ring from the mounting plate according to the size of fixture.
2. Place the mounting plate and secure its position with screws on the beams.



For most up-to-date spec sheets please refer to [asd-lighting.com](http://asd-lighting.com)

ASD LIGHTING CORP

E-mail: [orders@asd-lighting.com](mailto:orders@asd-lighting.com) | Web site: [www.asd-lighting.com](http://www.asd-lighting.com)

