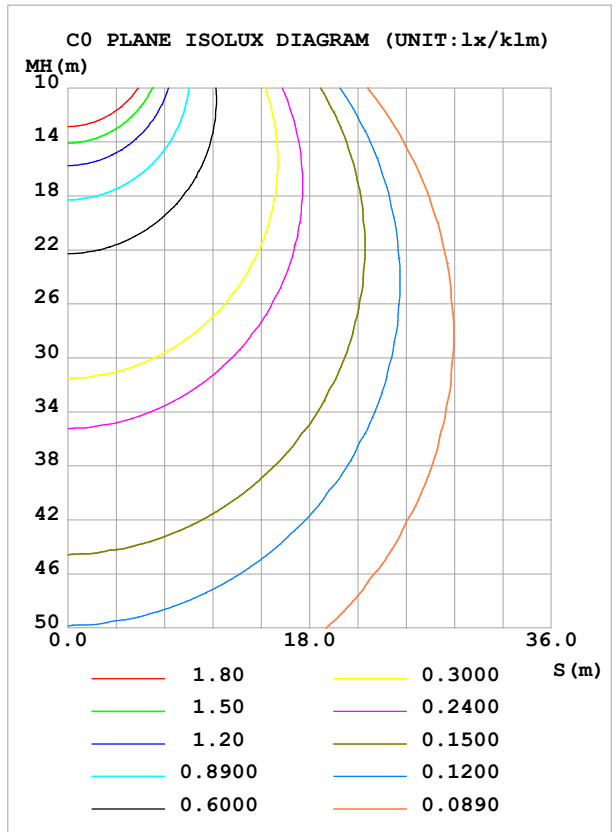
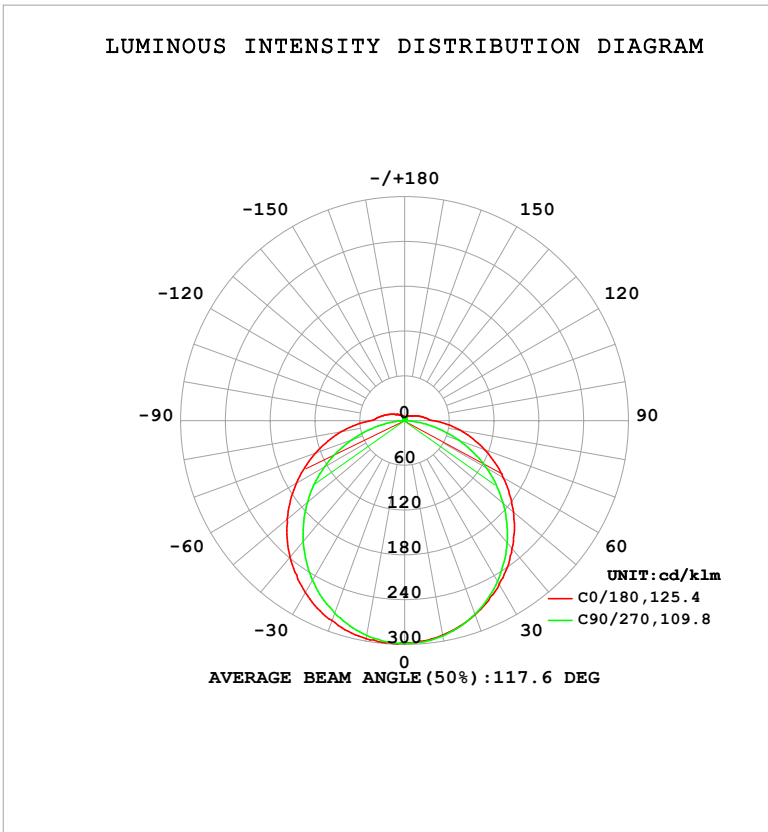


LUMINAIRE PHOTOMETRIC TEST REPORT

Test:U:119.86V I:0.6723A P:80.408W PF:0.9978 Freq:60.01Hz UTHDi:0.00% ITHDi:0.00% KDisp:0 Lamp Flux:11386.1x1 lm		
NAME: ASD-LSF8-8A80WH-QB	TYPE:	WEIGHT:
SPEC.: 80W-5000K	DIM.:	SERIAL No.:
MFR.: ASD Lighting Corp.	SUR.: 1.2*0.18m	Shielding Angle:

DATA OF LAMP		PHOTOMETRIC DATA			
MODEL	ASD-LSF8-8A80WH-QB	Imax (cd/klm)	299.0	S/MH (C0/180)	1.32
NOMINAL POWER (W)	80	LOR (%)	100.0	S/MH (C90/270)	1.24
RATED VOLTAGE (V)	120	TOTAL FLUX (lm/klm)	1000.00	η UP, DN (C0-180)	3.1,46.5
NOMINAL FLUX (lm)	11386.1	CIE CLASS	DIRECT	η UP, DN (C180-360)	3.4,47.0
LAMPS INSIDE	1	η up (%)	6.5	CIBSE SHR NOM	1.25
TEST VOLTAGE (V)	120	η down (%)	93.5	CIBSE SHR MAX	1.35



C Range: 0 - 360DEG
 C Interval: 45.0DEG
 Test Speed: HIGH
 Temperature: 25.3°C
 Operators: lianghaizhu-2
 Test Date: 2024-11-15

γ Range: 0 - 180DEG
 γ Interval: 1.0DEG
 Test System: EVERFINE GO-2000A_V1 SYSTEM V2.00.488
 Humidity: 65.0%
 Test Distance: 9.770m [K=1.0000]
 Remarks:

ZONAL FLUX DIAGRAM

ZONAL FLUX DIAGRAM:

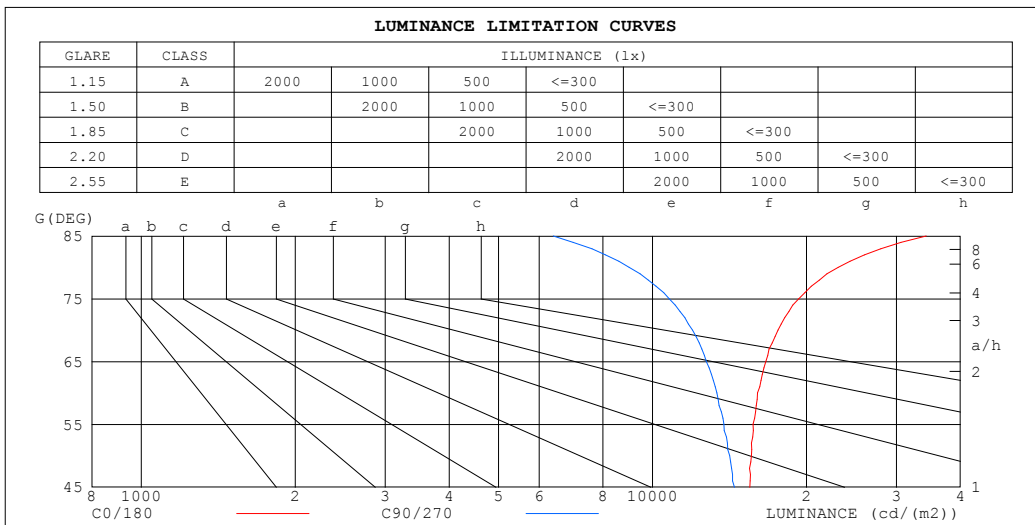
γ	C0	C45	C90	C135	C180	C225	C270	C315	γ	Φ zone	Φ total	%lum,lamp
10	291.8	292.4	293.0	295.3	296.6	294.1	292.2	291.7	0- 10	28.25	28.25	2.82,2.82
20	276.5	276.0	275.9	281.6	284.8	280.0	274.5	274.8	10- 20	80.98	109.2	10.9,10.9
30	253.6	250.7	248.9	258.6	266.1	256.4	247.0	249.2	20- 30	123.1	232.3	23.2,23.2
40	223.8	218.3	213.8	227.8	238.9	224.4	211.4	217.3	30- 40	149.4	381.6	38.2,38.2
50	190.5	180.7	172.5	190.8	205.4	188.3	170.1	178.9	40- 50	157.3	538.9	53.9,53.9
60	152.3	140.1	126.6	150.3	167.5	147.1	124.2	138.6	50- 60	146.9	685.8	68.6,68.6
70	114.2	98.90	77.64	108.3	127.1	104.8	75.49	98.10	60- 70	120.8	806.7	80.7,80.7
80	76.10	60.98	29.61	67.46	86.28	64.86	28.20	59.88	70- 80	84.07	890.7	89.1,89.1
90	38.37	25.09	0.8854	29.69	45.97	27.87	0.8408	24.19	80- 90	44.18	934.9	93.5,93.5
100	26.36	13.88	1.089	19.20	32.95	17.79	1.164	14.91	90-100	21.08	956.0	95.6,95.6
110	19.00	9.093	1.560	12.31	24.26	11.29	1.710	9.378	100-110	13.60	969.6	97,97
120	13.48	7.457	2.064	10.11	17.50	9.678	2.283	7.867	110-120	9.813	979.4	97.9,97.9
130	10.24	6.379	2.601	8.259	13.56	7.979	2.899	6.381	120-130	7.179	986.6	98.7,98.7
140	8.420	5.383	3.118	7.144	10.24	7.048	3.442	5.536	130-140	5.246	991.8	99.2,99.2
150	6.633	4.757	3.663	6.506	8.106	6.479	4.014	5.078	140-150	3.746	995.6	99.6,99.6
160	5.762	4.394	4.244	5.934	6.215	5.919	4.568	4.696	150-160	2.512	998.1	99.8,99.8
170	5.060	4.548	4.789	5.214	5.180	5.239	4.945	4.654	160-170	1.439	999.5	100,100
180	4.433	4.957	5.078	4.959	4.435	4.959	5.092	4.961	170-180	0.4760	1000.0	100,100
DEG	LUMINOUS INTENSITY:cd/klm									UNIT:lm/klm		

C Range: 0 - 360DEG
 C Interval: 45.0DEG
 Test Speed: HIGH
 Temperature:25.3°C
 Operators:lianghaizhu-2
 Test Date:2024-11-15

γ Range: 0 - 180DEG
 γ Interval: 1.0DEG
 Test System:EVERFINE GO-2000A_V1 SYSTEM V2.00.488
 Humidity:65.0%
 Test Distance:9.770m [K=1.0000]
 Remarks:

LUMINANCE LIMITATION CURVES

Test:U:119.86V I:0.6723A P:80.408W PF:0.9978 Freq:60.01Hz UTHDi:0.00% ITHDi:0.00% KDisp:0 Lamp Flux:11386.1x1 lm		
NAME: ASD-LSF8-8A80WH-QB	TYPE:	WEIGHT:
SPEC.: 80W-5000K	DIM.:	SERIAL No.:
MFR.: ASD Lighting Corp.	SUR.: 1.2*0.18m	Shielding Angle:



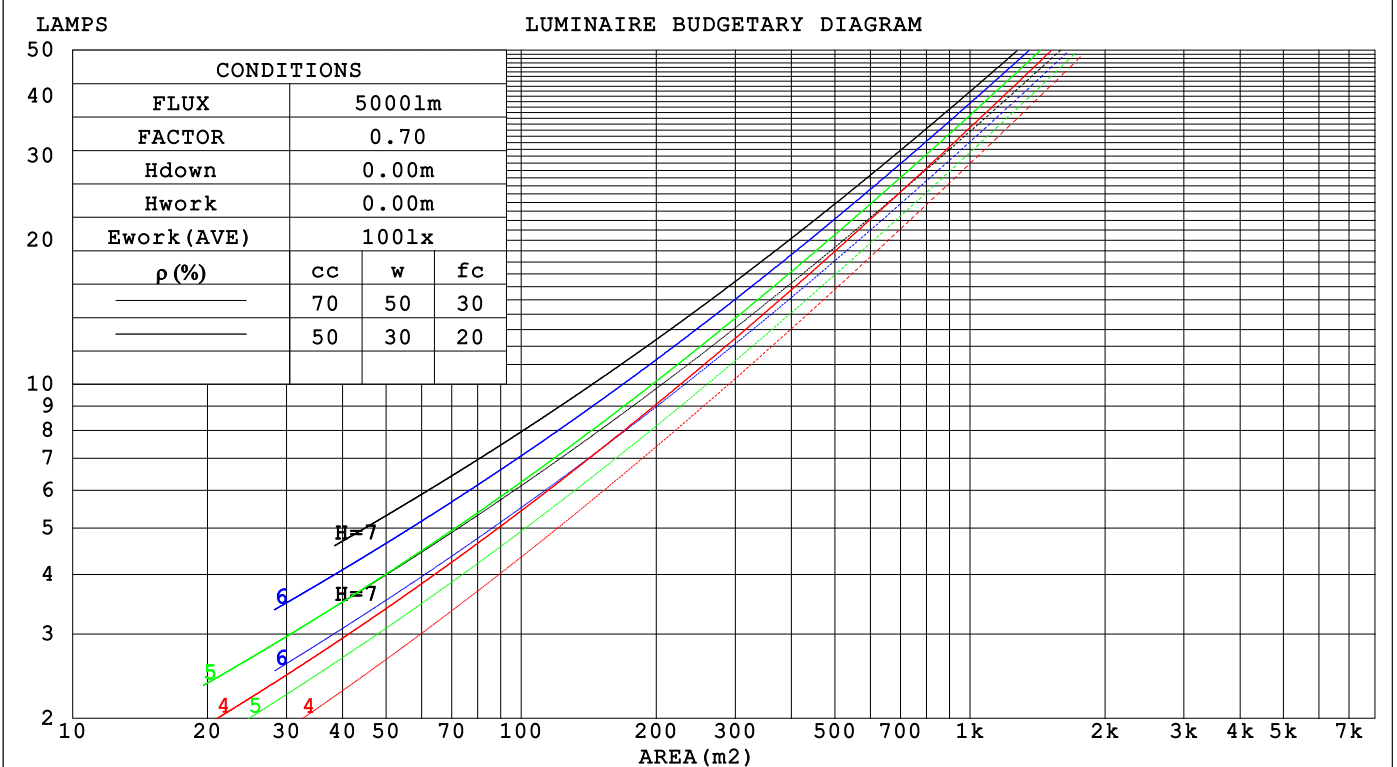
C Range: 0 - 360DEG
 C Interval: 45.0DEG
 Test Speed: HIGH
 Temperature: 25.3°C
 Operators: lianghaizhu-2
 Test Date: 2024-11-15

γ Range: 0 - 180DEG
 γ Interval: 1.0DEG
 Test System: EVERFINE GO-2000A_V1 SYSTEM V2.00.488
 Humidity: 65.0%
 Test Distance: 9.770m [K=1.0000]
 Remarks:

CU AND LUMINAIRE BUDGETARY ESTIMATE DIAGRAM

Test:U:119.86V I:0.6723A P:80.408W PF:0.9978 Freq:60.01Hz		
UTHDi:0.00% ITHDi:0.00% KDisp:0 Lamp Flux:11386.1x1 lm		
NAME: ASD-LSP8-8A80WH-QB	TYPE:	WEIGHT:
SPEC.: 80W-5000K	DIM.:	SERIAL No.:
MFR.: ASD Lighting Corp.	SUR.: 1.2*0.18m	Shielding Angle:

pcc	80%			70%			50%			30%			10%			0
pw	50%	30%	10%	50%	30%	10%	50%	30%	10%	50%	30%	10%	50%	30%	10%	0
pfc	20%			20%			20%			20%			20%			0
RCR	RCR:Room Cavity Ratio						Coefficients of Utilization(CU)									
0.0	1.17	1.17	1.17	1.14	1.14	1.14	1.07	1.07	1.07	1.02	1.02	1.02	.96	.96	.96	.93
1.0	1.00	.96	.91	.98	.93	.89	.92	.88	.85	.87	.84	.81	.82	.80	.78	.75
2.0	.87	.79	.73	.84	.78	.72	.80	.74	.69	.75	.71	.67	.71	.68	.64	.62
3.0	.76	.67	.60	.74	.66	.59	.70	.63	.57	.66	.60	.56	.63	.58	.54	.51
4.0	.67	.58	.51	.65	.57	.50	.62	.54	.49	.59	.52	.47	.56	.50	.46	.43
5.0	.60	.50	.43	.58	.49	.43	.55	.48	.42	.52	.46	.41	.50	.44	.40	.37
6.0	.53	.44	.38	.52	.44	.37	.50	.42	.36	.47	.41	.36	.45	.39	.35	.33
7.0	.48	.39	.33	.47	.39	.33	.45	.38	.32	.43	.36	.31	.41	.35	.31	.29
8.0	.44	.35	.29	.43	.35	.29	.41	.34	.29	.39	.33	.28	.38	.32	.27	.25
9.0	.40	.32	.26	.40	.32	.26	.38	.31	.26	.36	.30	.25	.35	.29	.25	.23
10.0	.37	.29	.24	.36	.29	.24	.35	.28	.23	.34	.27	.23	.32	.27	.22	.21



C Range: 0 - 360DEG
 C Interval: 45.0DEG
 Test Speed: HIGH
 Temperature:25.3°C
 Operators:lianghaizhu-2
 Test Date:2024-11-15

γ Range: 0 - 180DEG
 γ Interval: 1.0DEG
 Test System:EVERFINE GO-2000A_V1 SYSTEM V2.00.488
 Humidity:65.0%
 Test Distance:9.770m [K=1.0000]
 Remarks:

WEC AND CCEC

Test:U:119.86V I:0.6723A P:80.408W PF:0.9978 Freq:60.01Hz		
UTHDi:0.00% ITHDi:0.00% KDisp:0 Lamp Flux:11386.1x1 lm		
NAME: ASD-LSF8-8A80WH-QB	TYPE:	WEIGHT:
SPEC.: 80W-5000K	DIM.:	SERIAL No.:
MFR.: ASD Lighting Corp.	SUR.: 1.2*0.18m	Shielding Angle:

ρ_{CC}	80%			70%			50%			30%			10%			0
ρ_w	50%	30%	10%	50%	30%	10%	50%	30%	10%	50%	30%	10%	50%	30%	10%	0
ρ_{fc}	20%			20%			20%			20%			20%			0
RCR	RCR:Room Cavity Ratio						Wall Exitance Coefficients(WEC)									
0.0																
1.0	.345	.196	.062	.336	.192	.061	.319	.183	.058	.303	.175	.056	.289	.167	.054	
2.0	.312	.171	.052	.304	.167	.052	.288	.160	.050	.274	.154	.048	.261	.148	.047	
3.0	.283	.151	.045	.276	.148	.044	.262	.142	.043	.249	.137	.042	.237	.131	.041	
4.0	.258	.134	.039	.251	.132	.039	.239	.127	.038	.228	.122	.037	.217	.118	.036	
5.0	.237	.121	.035	.231	.118	.034	.220	.114	.034	.209	.110	.033	.200	.107	.032	
6.0	.218	.109	.031	.213	.108	.031	.203	.104	.030	.194	.101	.030	.185	.097	.029	
7.0	.202	.100	.028	.197	.098	.028	.188	.095	.027	.180	.092	.027	.172	.089	.026	
8.0	.188	.092	.026	.184	.091	.026	.176	.088	.025	.168	.085	.025	.161	.083	.024	
9.0	.176	.085	.024	.172	.084	.024	.165	.081	.023	.158	.079	.023	.151	.077	.022	
10.0	.165	.079	.022	.161	.078	.022	.155	.076	.021	.148	.074	.021	.142	.072	.021	

ρ_{CC}	80%			70%			50%			30%			10%			0
ρ_w	50%	30%	10%	50%	30%	10%	50%	30%	10%	50%	30%	10%	50%	30%	10%	0
ρ_{fc}	20%			20%			20%			20%			20%			0
RCR	RCR:Room Cavity Ratio						Ceiling Cavity Exitance Coefficients(CCEC)									
0.0	.240	.240	.240	.205	.205	.205	.140	.140	.140	.080	.080	.080	.026	.026	.026	
1.0	.233	.206	.182	.199	.177	.156	.136	.122	.108	.078	.070	.063	.025	.023	.020	
2.0	.225	.182	.146	.193	.157	.126	.132	.108	.088	.076	.063	.052	.024	.020	.017	
3.0	.218	.165	.123	.187	.142	.107	.128	.099	.075	.074	.058	.044	.024	.019	.014	
4.0	.210	.152	.108	.180	.131	.094	.124	.092	.066	.072	.054	.039	.023	.017	.013	
5.0	.202	.142	.097	.174	.123	.085	.120	.086	.060	.069	.050	.035	.022	.016	.012	
6.0	.195	.134	.090	.168	.116	.078	.116	.081	.055	.067	.048	.033	.022	.016	.011	
7.0	.188	.127	.084	.162	.110	.073	.112	.077	.052	.065	.045	.031	.021	.015	.010	
8.0	.181	.121	.080	.156	.105	.070	.108	.074	.049	.063	.044	.029	.020	.014	.010	
9.0	.175	.116	.076	.151	.101	.067	.105	.071	.047	.061	.042	.028	.020	.014	.009	
10.0	.169	.112	.074	.146	.097	.064	.101	.068	.046	.059	.040	.027	.019	.013	.009	

C Range: 0 - 360DEG
 C Interval: 45.0DEG
 Test Speed: HIGH
 Temperature:25.3°C
 Operators:lianghaizhu-2
 Test Date:2024-11-15

γ Range: 0 - 180DEG
 γ Interval: 1.0DEG
 Test System:EVERFINE GO-2000A_V1 SYSTEM V2.00.488
 Humidity:65.0%
 Test Distance:9.770m [K=1.0000]
 Remarks:

UGR(Unified Glare Rating) Table

Test:U:119.86V I:0.6723A P:80.408W PF:0.9978 Freq:60.01Hz UTHDi:0.00% ITHDi:0.00% KDisp:0 Lamp Flux:11386.1x1 lm										
NAME: ASD-LSP8-8A80WH-QB					TYPE:			WEIGHT:		
SPEC.: 80W-5000K					DIM.:			SERIAL No.:		
MFR.: ASD Lighting Corp.					SUR.: 1.2*0.18m			Shielding Angle:		
ceiling/cavity	0.7	0.7	0.5	0.5	0.3	0.7	0.7	0.5	0.5	0.3
walls	0.5	0.3	0.5	0.3	0.3	0.5	0.3	0.5	0.3	0.3
working plane	0.2	0.2	0.2	0.2	0.2	0.2	0.2	0.2	0.2	0.2
Room dimensions	Viewed crosswise					Viewed endwise				
x = 2H y = 2H	13.6	15.1	14.0	15.4	15.7	13.0	14.5	13.3	14.8	15.1
3H	15.6	17.0	16.0	17.3	17.7	14.5	15.9	14.9	16.2	16.6
4H	16.7	18.0	17.1	18.3	18.7	15.1	16.4	15.5	16.8	17.2
6H	17.7	18.9	18.1	19.3	19.7	15.5	16.7	15.9	17.1	17.5
8H	18.2	19.4	18.7	19.8	20.2	15.6	16.8	16.0	17.2	17.6
12H	18.8	19.9	19.2	20.3	20.8	15.6	16.8	16.1	17.2	17.6
4H 2H	14.2	15.5	14.6	15.9	16.3	13.7	15.0	14.1	15.4	15.8
3H	16.4	17.6	16.9	18.0	18.4	15.5	16.6	15.9	17.0	17.5
4H	17.6	18.7	18.1	19.1	19.6	16.2	17.3	16.7	17.7	18.2
6H	18.8	19.8	19.3	20.2	20.7	16.8	17.7	17.3	18.2	18.7
8H	19.5	20.3	20.0	20.8	21.3	17.0	17.8	17.5	18.3	18.9
12H	20.1	21.0	20.7	21.5	22.0	17.1	17.9	17.6	18.4	18.9
8H 4H	17.9	18.8	18.4	19.3	19.8	16.8	17.6	17.3	18.1	18.6
6H	19.4	20.1	19.9	20.6	21.2	17.6	18.3	18.1	18.8	19.4
8H	20.2	20.8	20.7	21.4	22.0	17.9	18.6	18.5	19.1	19.7
12H	21.1	21.6	21.6	22.2	22.8	18.1	18.7	18.7	19.3	19.9
12H 4H	18.0	18.8	18.5	19.3	19.8	16.9	17.7	17.4	18.2	18.7
6H	19.5	20.1	20.0	20.7	21.3	17.8	18.5	18.4	19.0	19.6
8H	20.4	20.9	20.9	21.5	22.1	18.3	18.8	18.8	19.4	20.0
Variations with the observer position at spacings(CIE Pub.117):										
S = 1.0H	+ 0.1 / - 0.1					+ 0.1 / - 0.2				
1.5H	+ 0.2 / - 0.3					+ 0.2 / - 0.3				
2.0H	+ 0.2 / - 0.3					+ 0.1 / - 0.4				

CIE Pub.117, 11386 lm Total Lamp Luminous Flux Correct (8log(F/F0) = 8.5)
 Area: 0.216 m2

C Range: 0 - 360DEG	γ Range: 0 - 180DEG
C Interval: 45.0DEG	γ Interval: 1.0DEG
Test Speed: HIGH	Test System:EVERFINE GO-2000A_V1 SYSTEM V2.00.488
Temperature:25.3°C	Humidity:65.0%
Operators:lianghaizhu-2	Test Distance:9.770m [K=1.0000]
Test Date:2024-11-15	Remarks:

UTILIZATION FACTORS TABLE

Test:U:119.86V I:0.6723A P:80.408W PF:0.9978 Freq:60.01Hz UTHDi:0.00% ITHDi:0.00% KDisp:0 Lamp Flux:11386.1x1 lm		
NAME: ASD-LSF8-8A80WH-QB	TYPE:	WEIGHT:
SPEC.: 80W-5000K	DIM.:	SERIAL No.:
MFR.: ASD Lighting Corp.	SUR.: 1.2*0.18m	Shielding Angle:

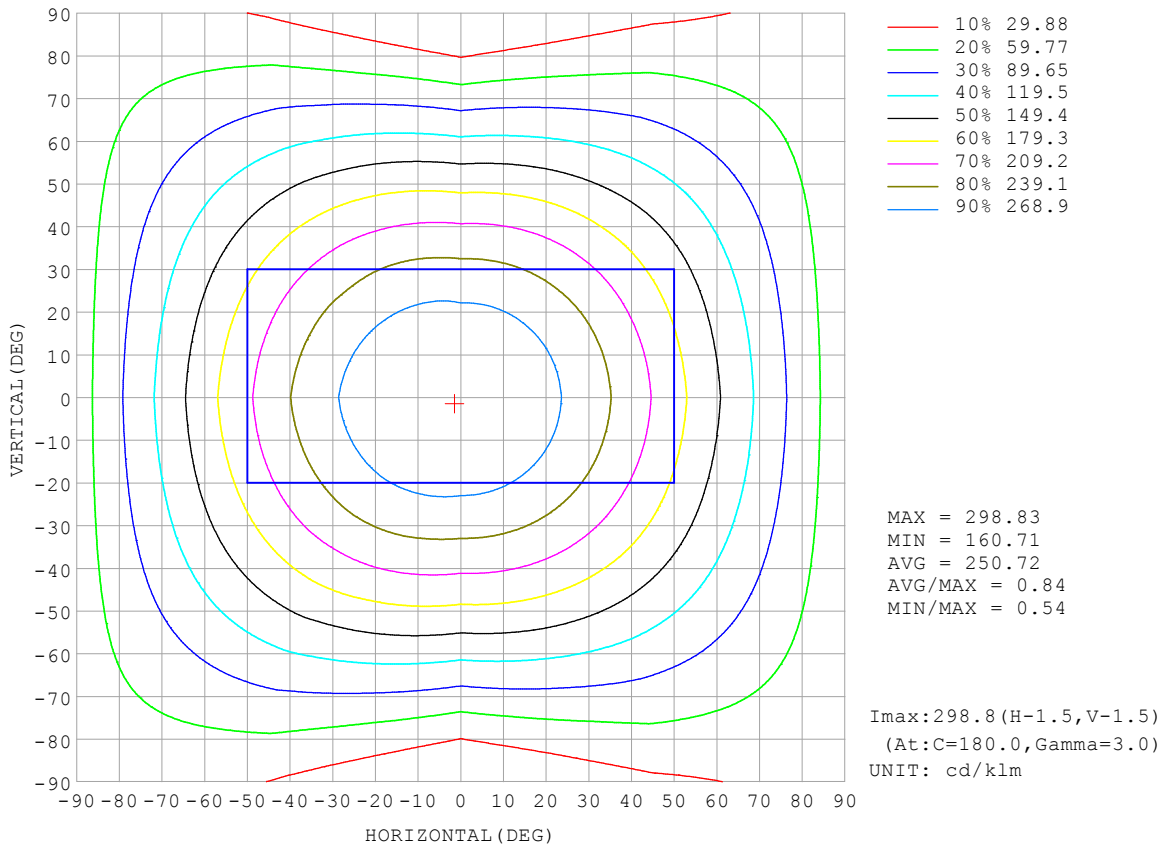
REFLECTANCE										
Ceiling	0.8	0.8	0.8	0.7	0.7	0.7	0.5	0.5	0.5	0
Walls	0.7	0.5	0.3	0.7	0.5	0.3	0.7	0.5	0.3	0
Working plane	0.2	0.2	0.2	0.2	0.2	0.2	0.2	0.2	0.2	0
ROOM INDEX	UTILIZATION FACTORS (PERCENT) $k(RI) \times RCR = 5$									
k = 0.60	54	42	35	53	41	34	51	41	34	28
0.80	63	51	43	62	51	43	60	50	43	35
1.00	71	60	52	70	59	51	67	60	51	43
1.25	78	67	59	77	66	59	73	64	58	49
1.50	83	73	65	81	71	64	78	69	63	54
2.00	91	81	74	88	79	73	84	76	71	61
2.50	95	86	79	92	84	78	87	81	75	65
3.00	98	90	84	95	88	83	90	85	80	69
4.00	103	96	90	100	94	89	94	89	85	74
5.00	105	99	95	102	97	93	96	92	89	77
ROOM INDEX	UF(total)									Direct
According to DIN EN 13032-2 2004			Suspended				SHRNOM = 1.25			

C Range: 0 - 360DEG
 C Interval: 45.0DEG
 Test Speed: HIGH
 Temperature:25.3°C
 Operators:lianghaizhu-2
 Test Date:2024-11-15

γ Range: 0 - 180DEG
 γ Interval: 1.0DEG
 Test System:EVERFINE GO-2000A_V1 SYSTEM V2.00.488
 Humidity:65.0%
 Test Distance:9.770m [K=1.0000]
 Remarks:

ISOCANDELA DIAGRAM

Test:U:119.86V I:0.6723A P:80.408W PF:0.9978 Freq:60.01Hz UTHDi:0.00% ITHDi:0.00% KDisp:0 Lamp Flux:11386.1x1 lm		
NAME: ASD-LSF8-8A80WH-QB	TYPE:	WEIGHT:
SPEC.: 80W-5000K	DIM.:	SERIAL No.:
MFR.: ASD Lighting Corp.	SUR.: 1.2*0.18m	Shielding Angle:

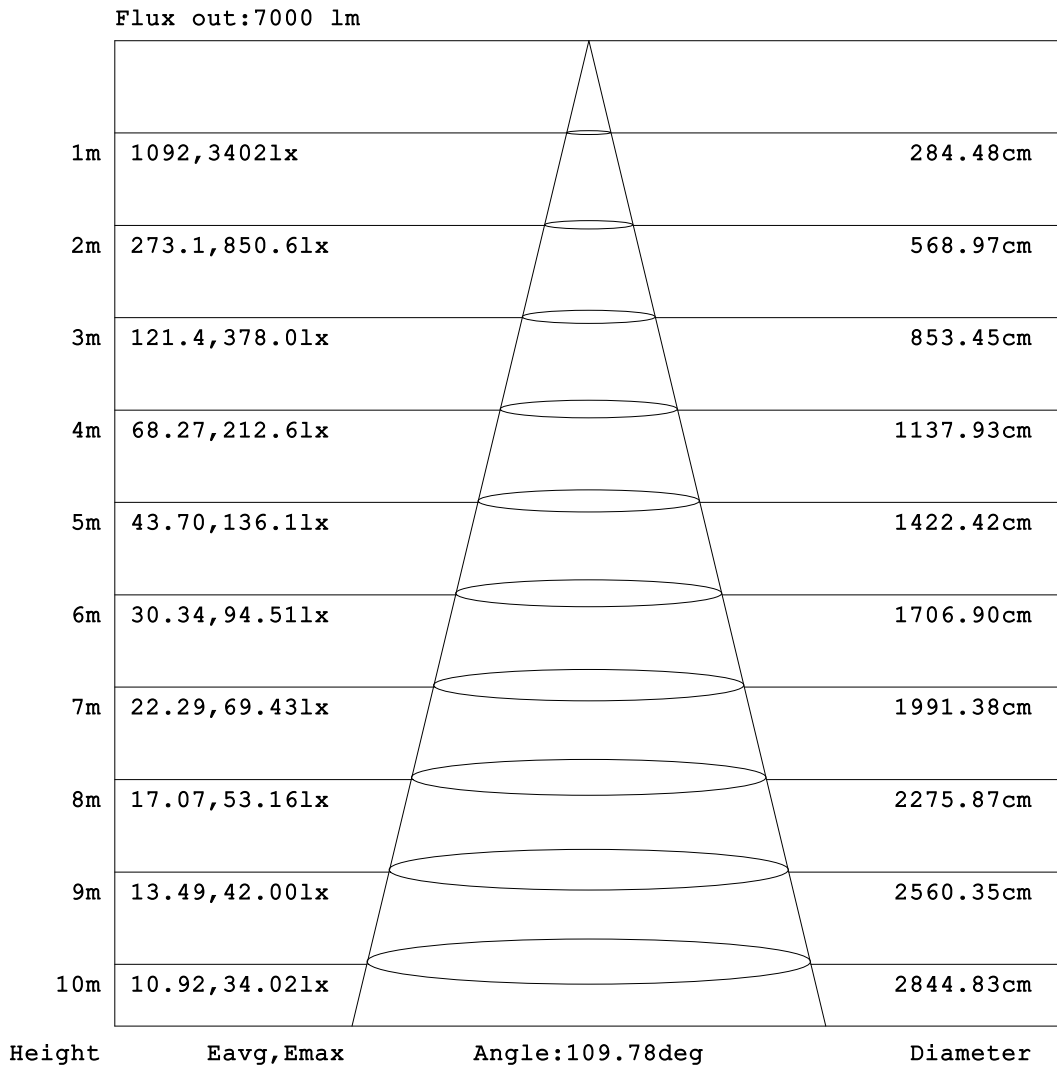


C Range: 0 - 360DEG
 C Interval: 45.0DEG
 Test Speed: HIGH
 Temperature:25.3°C
 Operators:lianghaizhu-2
 Test Date:2024-11-15

γ Range: 0 - 180DEG
 γ Interval: 1.0DEG
 Test System:EVERFINE GO-2000A_V1 SYSTEM V2.00.488
 Humidity:65.0%
 Test Distance:9.770m [K=1.0000]
 Remarks:

AAI Figure

Test:U:119.86V I:0.6723A P:80.408W PF:0.9978 Freq:60.01Hz UTHDi:0.00% ITHDi:0.00% KDisp:0 Lamp Flux:11386.1x1 lm		
NAME: ASD-LSF8-8A80WH-QB	TYPE:	WEIGHT:
SPEC.: 80W-5000K	DIM.:	SERIAL No.:
MFR.: ASD Lighting Corp.	SUR.: 1.2*0.18m	Shielding Angle:



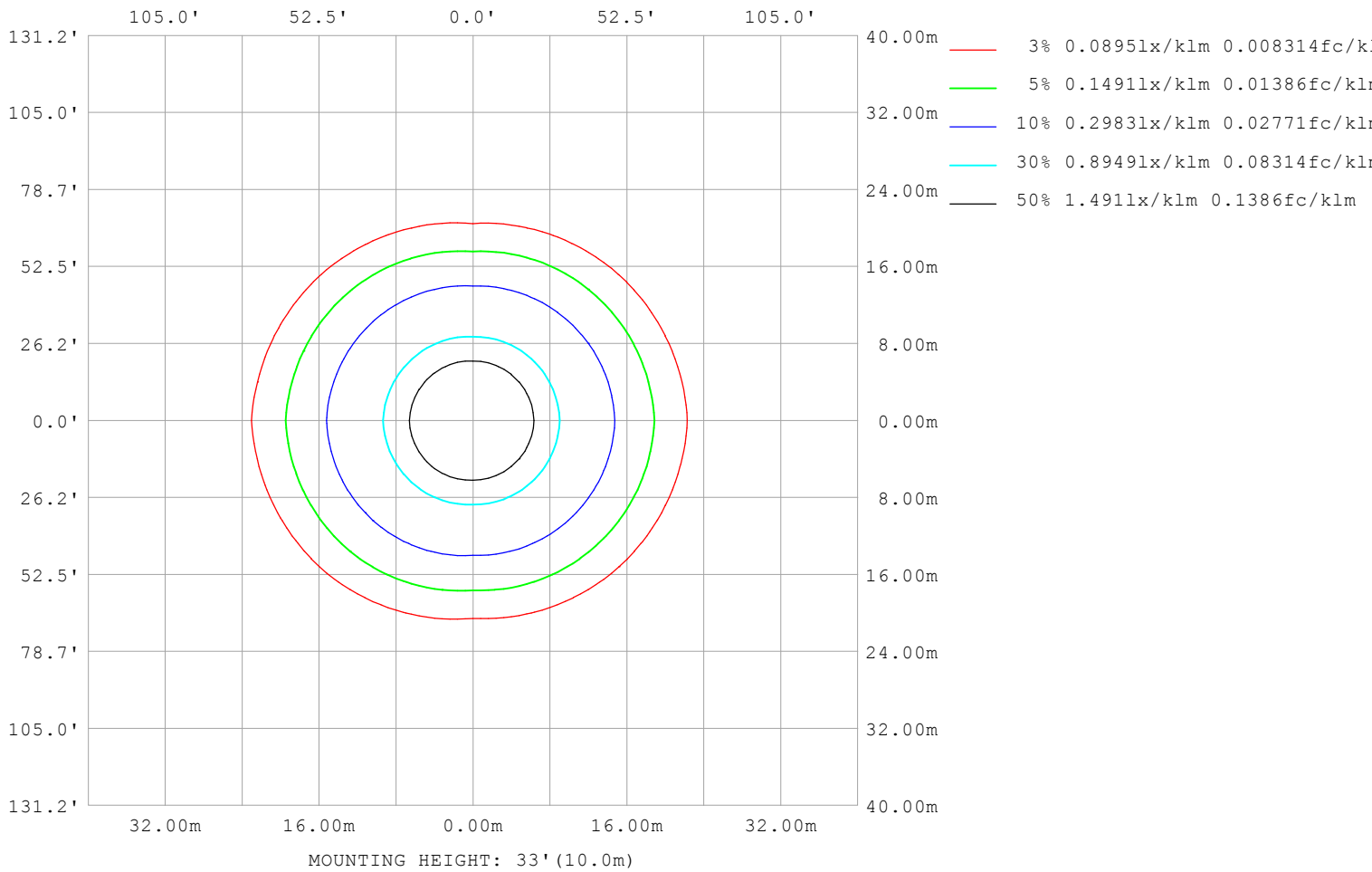
Note:The Curves indicate the illuminated area and the average illumination when the luminaire is at different distance.

C Range: 0 - 360DEG
 C Interval: 45.0DEG
 Test Speed: HIGH
 Temperature:25.3°C
 Operators:lianghaizhu-2
 Test Date:2024-11-15

γ Range: 0 - 180DEG
 γ Interval: 1.0DEG
 Test System:EVERFINE GO-2000A_V1 SYSTEM V2.00.488
 Humidity:65.0%
 Test Distance:9.770m [K=1.0000]
 Remarks:

ISOLUX DIAGRAM

Test:U:119.86V I:0.6723A P:80.408W PF:0.9978 Freq:60.01Hz UTHDi:0.00% ITHDi:0.00% KDisp:0 Lamp Flux:11386.1x1 lm		
NAME: ASD-LSF8-8A80WH-QB	TYPE:	WEIGHT:
SPEC.: 80W-5000K	DIM.:	SERIAL No.:
MFR.: ASD Lighting Corp.	SUR.: 1.2*0.18m	Shielding Angle:



C Range: 0 - 360DEG
 C Interval: 45.0DEG
 Test Speed: HIGH
 Temperature:25.3°C
 Operators:lianghaizhu-2
 Test Date:2024-11-15

γ Range: 0 - 180DEG
 γ Interval: 1.0DEG
 Test System:EVERFINE GO-2000A_V1 SYSTEM V2.00.488
 Humidity:65.0%
 Test Distance:9.770m [K=1.0000]
 Remarks:

LED Avg.L Report

Test:U:119.86V I:0.6723A P:80.408W PF:0.9978 Freq:60.01Hz UTHDi:0.00% ITHDi:0.00% KDisp:0 Lamp Flux:11386.1x1 lm		
NAME: ASD-LSF8-8A80WH-QB	TYPE:	WEIGHT:
SPEC.: 80W-5000K	DIM.:	SERIAL No.:
MFR.: ASD Lighting Corp.	SUR.: 1.2*0.18m	Shielding Angle:

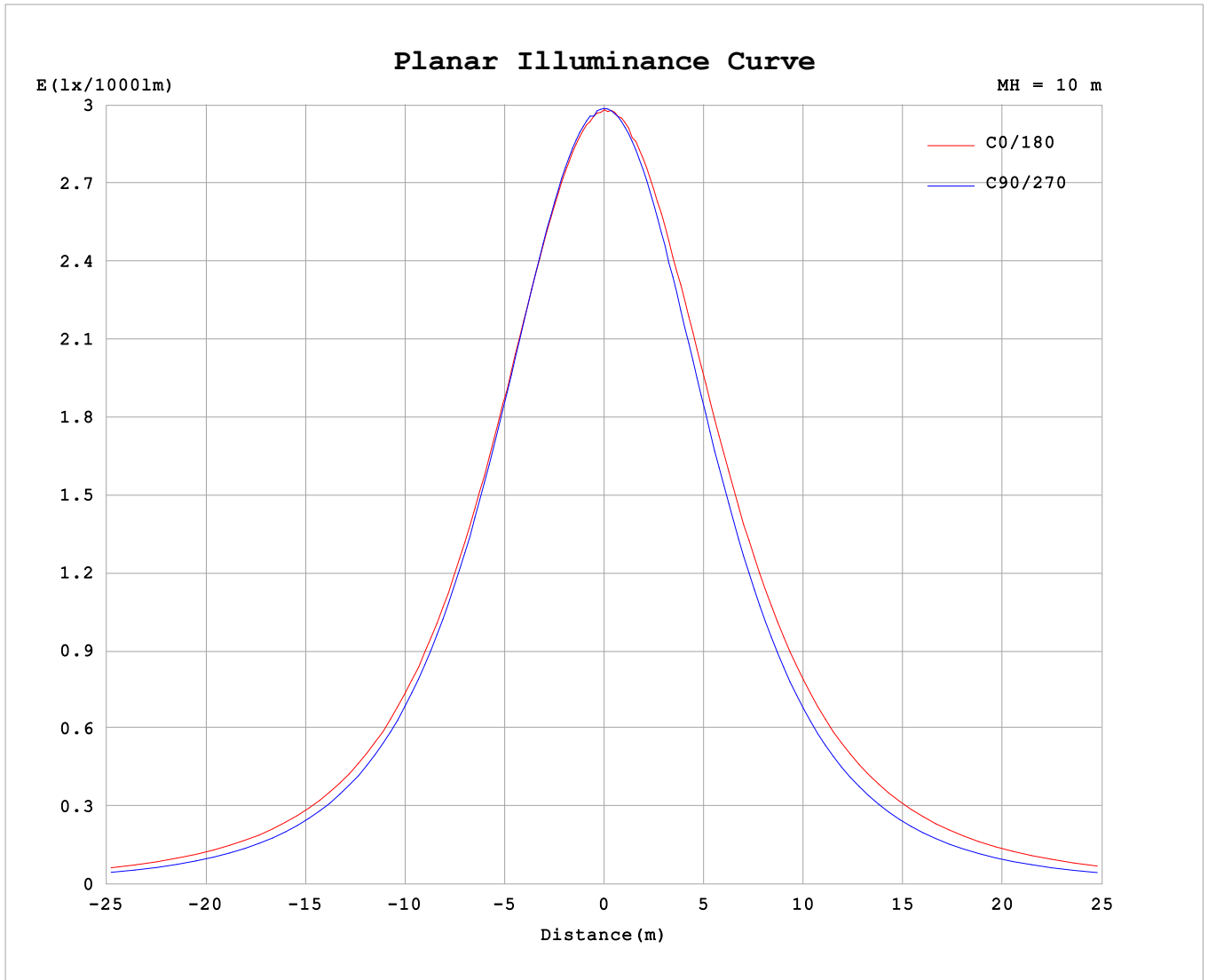
AvgL	cd/m2
L_0~180 (65) av	17528
L_0~180 (75) av	20530
L_0~180 (85) av	36964
L_90~270 (65) av	12606
L_90~270 (75) av	10594
L_90~270 (85) av	6099
L_45 (65) av	15357
L_45 (75) av	16830
L_45 (85) av	27040

Standard: GB/T 29293-2012

C Range: 0 - 360DEG
 C Interval: 45.0DEG
 Test Speed: HIGH
 Temperature:25.3°C
 Operators:lianghaizhu-2
 Test Date:2024-11-15

γ Range: 0 - 180DEG
 γ Interval: 1.0DEG
 Test System:EVERFINE GO-2000A_V1 SYSTEM V2.00.488
 Humidity:65.0%
 Test Distance:9.770m [K=1.0000]
 Remarks:

Planar Illuminance Curve



C Range: 0 - 360DEG
 C Interval: 45.0DEG
 Test Speed: HIGH
 Temperature: 25.3°C
 Operators: lianghaizhu-2
 Test Date: 2024-11-15

γ Range: 0 - 180DEG
 γ Interval: 1.0DEG
 Test System: EVERFINE GO-2000A_V1 SYSTEM V2.00.488
 Humidity: 65.0%
 Test Distance: 9.770m [K=1.0000]
 Remarks:

LUMINOUS DISTRIBUTION INTENSITY DATA

Test:U:119.86V I:0.6723A P:80.408W PF:0.9978 Freq:60.01Hz UTHDi:0.00% ITHDi:0.00% KDisp:0 Lamp Flux:11386.1x1 lm		
NAME: ASD-LSP8-8A80WH-QB	TYPE:	WEIGHT:
SPEC.: 80W-5000K	DIM.:	SERIAL No.:
MFR.: ASD Lighting Corp.	SUR.: 1.2*0.18m	Shielding Angle:

Table--1

UNIT: cd/klm

C (DEG) \ γ (DEG)	0	45	90	135	180	225	270	315										
0	299	299	299	299	299	299	299	299										
5	296	297	297	298	299	298	297	296										
10	292	292	293	295	297	294	292	292										
15	285	285	286	290	292	288	285	284										
20	277	276	276	282	285	280	275	275										
25	266	264	263	271	277	269	262	263										
30	254	251	249	259	266	256	247	249										
35	240	235	232	244	253	242	230	234										
40	224	218	214	228	239	224	211	217										
45	208	200	194	209	223	207	191	198										
50	190	181	173	191	205	188	170	179										
55	171	161	150	171	187	168	148	159										
60	152	140	127	150	167	147	124	139										
65	134	120	102	129	147	126	100	118										
70	114	98.9	77.6	108	127	105	75.5	98.1										
75	95.0	79.5	52.9	87.6	107	84.8	51.1	78.6										
80	76.1	61.0	29.6	67.5	86.3	64.9	28.2	59.9										
85	56.8	43.2	10.6	48.1	65.4	45.8	9.61	41.8										
90	38.4	25.1	0.89	29.7	46.0	27.9	0.84	24.2										
95	30.9	18.4	0.86	23.4	38.1	21.9	0.94	18.8										
100	26.4	13.9	1.09	19.2	33.0	17.8	1.16	14.9										
105	22.4	9.70	1.34	13.2	28.4	11.8	1.42	10.3										
110	19.0	9.09	1.56	12.3	24.3	11.3	1.71	9.38										
115	16.0	8.31	1.81	11.1	20.6	10.4	1.99	8.66										
120	13.5	7.46	2.06	10.1	17.5	9.68	2.28	7.87										
125	11.5	7.14	2.33	9.18	14.9	8.77	2.60	7.36										
130	10.2	6.38	2.60	8.26	13.6	7.98	2.90	6.38										
135	9.41	5.82	2.88	7.61	11.8	7.43	3.19	5.77										
140	8.42	5.38	3.12	7.14	10.2	7.05	3.44	5.54										
145	7.53	5.06	3.37	6.79	9.04	6.72	3.69	5.28										
150	6.63	4.76	3.66	6.51	8.11	6.48	4.01	5.08										
155	6.07	4.54	3.96	6.24	7.19	6.21	4.33	4.80										
160	5.76	4.39	4.24	5.93	6.21	5.92	4.57	4.70										
165	5.38	4.44	4.57	5.44	5.72	5.46	4.77	4.69										
170	5.06	4.55	4.79	5.21	5.18	5.24	4.94	4.65										
175	5.05	5.01	4.95	4.92	4.99	4.89	5.06	5.06										
180	4.43	4.96	5.08	4.96	4.44	4.96	5.09	4.96										

C Range: 0 - 360DEG
 C Interval: 45.0DEG
 Test Speed: HIGH
 Temperature:25.3°C
 Operators:lianghaizhu-2
 Test Date:2024-11-15

γ Range: 0 - 180DEG
 γ Interval: 1.0DEG
 Test System:EVERFINE GO-2000A_V1 SYSTEM V2.00.488
 Humidity:65.0%
 Test Distance:9.770m [K=1.0000]
 Remarks: