



LED COMMERCIAL DOWNLIGHT

CDL7S series

- ▶ **DESIGN** - LED COMMERCIAL DOWNLIGHT comes with a durable aluminum housing resistant to rust and impact, anti-glare PC lens, spring-loaded clips and 1.6 ft cord in metal hose. It is designed to operate on 120-277V circuits with a 0-10V dimmable driver.
- ▶ **COLOR AND POWER SELECTABLE** - You can choose either a 2700K soft white, 3000K warm white, 3500K neutral white, 4000K cool white, or 5000K daylight color temperature, and change the power with a simple switch.
- ▶ **CR190+** - Rating provides rich and natural colors and keeps your space looking and feeling vibrant. True bright colors also improve your mood and general health.
- ▶ **INSTALLATION** - This fixture is IC rated so there is no can or any other housing required. It is also Wet Locations rated, making it perfect for any spaces with humidity requirements. Perfect for retail, hospitality, or any other commercial space with a high ceiling.
- ▶ **ADVANTAGES** - With a lifespan of 50,000 hours, these fixtures are made to last decades under normal operation! ASD provides a 5-year limited warranty along with UL and Energy Star certifications to guarantee top quality products and safety!



PRODUCT PRESENTATION:

Model	Size	Power	Voltage	Dimming	Lumens	CCT	Finish	Dimensions	Certification
ASD-CDL7S-6A30WH	6 inch	12/16/22/26/30 W	120-277V	0-10V	3,488lm	2,700/3,000/3,500/4,000/5,000 K	White	8-11/16" x 8-11/16" x 3-9/16"	ETL(5029309),ES,T24, JA8
ASD-CDL7S-8A35WH	8 inch	16/22/26/30/35 W	120-277V	0-10V	4,191lm	2,700/3,000/3,500/4,000/5,000 K	White	10-1/4" x 10-1/4" x 4-3/8"	ETL(5029309),ES,T24, JA8

For detailed luminous flux information please refer to Annex 1.

TECHNICAL PARAMETERS:

Model	Max input current	Inrush current	Work environment	Operating temperature	Power factor	Beam Angle	Surge protection	Housing	Lens	CRI
ASD-CDL7S-6A30WH	0.25A	1A	Wet location	-4°F to 113°F(-20°C to 45°C)	>0.9	106°	2kV	Aluminum	PC	>90
ASD-CDL7S-8A35WH	0.29A	1A	Wet location	-4°F to 113°F(-20°C to 45°C)	>0.9	89°	2kV	Aluminum	PC	>90

ORDERING INFORMATION

Model	Product dimensions	Weight	Pcs. Per carton	Carton size	Carton weight	UPC	GTIN 14
ASD-CDL7S-6A30WH	8-11/16" x 8-11/16" x 3-9/16"	1.5 lbs(0.7kg)	8	21.57" x 21.34" x 10.94"	9.9 lbs	81012811498	10810128114988
ASD-CDL7S-8A35WH	10-1/4" x 10-1/4" x 4-3/8"	2.2 lbs(1.0kg)	4	24.72" x 12.40" x 12.52"	14.3 lbs	81012811499	10810128114995

ACCESSORIES:

Model	Description	UPC	Pcs. (pack) per carton	Carton size	Carton weight	GTIN 14 in carton
BLD-HM08D	Battery back-up kit 8W	810128111508	10	17.1" x 14.6" x 11"	19.6 lbs	10810128111505
BLD-HM15D	Battery back-up kit 15W	810050734882	10	17.8" x 13.5" x 9.5"	25.1 lbs	10810050734889
ASD-MPLS-346-FA-6PACK	New construction flat mounting plate with asymmetric square holes 3-4-6"	810128110303	24 (6)	14.4" x 9.8" x 3.2"	17.7 lbs	10810128110300
ASD-MPLS-346-FS-6PACK	New construction flat mounting plate with symmetric square holes 3-4-6"	810128110310	24 (6)	27" x 9.1" x 3.2"	20.7 lbs	10810128110317
ASD-MPLS-346-SC-6PACK	New construction mounting plate with square holes and sliding clips 3-4-6"	810128110327	12 (6)	17.3" x 11.9" x 13.4"	16.5 lbs	10810128110324


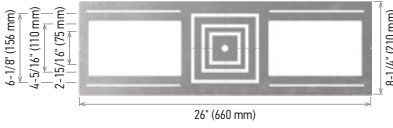
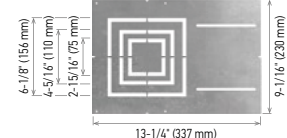
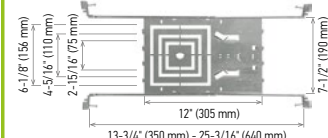
For most up-to-date spec sheets please refer to asd-lighting.com



LED COMMERCIAL DOWNLIGHT

CDL7S series

ACCESSORIES (sold separately):

<p>Battery back-up kit</p>  <p>8W BLD-HM08D</p> <p>15W BLD-HM15D</p>	<p>New construction flat mounting plate with symmetric square holes 3-4-6" ASD-MPLS-346-FS-6PACK</p>  <p>6-1/8" (156 mm) 4-5/16" (110 mm) 2-15/16" (75 mm) 26" (660 mm) 8-1/4" (210 mm)</p>
<p>New construction flat mounting plate with asymmetric square holes 3-4-6" ASD-MPLS-346-FA-6PACK</p>  <p>6-1/8" (156 mm) 4-5/16" (110 mm) 2-15/16" (75 mm) 13-1/4" (337 mm) 9-1/16" (230 mm)</p>	<p>New construction mounting plate with square holes and sliding clips 3-4-6" ASD-MPLS-346-SC-6PACK</p>  <p>6-1/8" (156 mm) 4-5/16" (110 mm) 2-15/16" (75 mm) 12" (305 mm) 13-3/4" (350 mm) - 25-3/16" (640 mm) 7-1/2" (190 mm)</p>

ACCESSORY COMPATIBILITY LIST:

Accessories	Models					
	6"	8"	6"	8"	6"	8"
Battery back-up kit 8W BLD-HM08D	•	•	•	•	•	•
Battery back-up kit 15W BLD-HM15D	•	•	•	•	•	•
New construction flat mounting plate with asymmetric square holes 3-4-6" ASD-MPLS-346-FA-6PACK	•	•	•	•	•	•
New construction flat mounting plate with symmetric square holes 3-4-6" ASD-MPLS-346-FS-6PACK	•	•	•	•	•	•
New construction mounting plate with square holes and sliding clips 3-4-6" ASD-MPLS-346-SC-6PACK	•	•	•	•	•	•

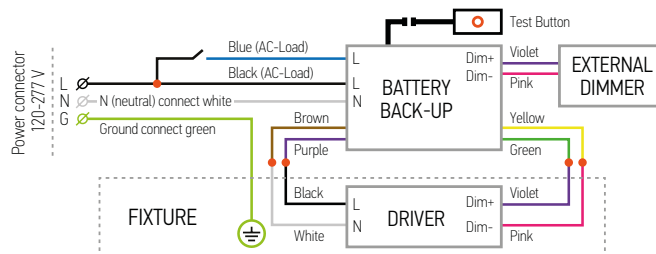
BATTERY BACK-UP KIT INFORMATION

BLD-HM08D **BLD-HM15D** sold separately:

Specifications	model: BLD-HM08D	model: BLD-HM15D
Input voltage	120-347 Vac, 50/60 Hz	
Input current	≤ 100 mA	
Output voltage	≤ 170 Vdc	≤ 175 Vdc
Output power	8W	15W
Lumen	800 lm	1,000 lm
Application	< 60W (0-10 V dimmable fixture)	< 100W (0/1-10 V dimmable fixture)
Ambient temperature	32°F to 122°F (0°C to 50°C)	

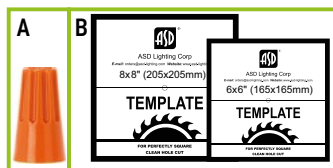
ELECTRICAL SCHEMATIC DIAGRAM:

CDL7 EM kit



PACKAGE CONTENTS:

Description	Quantity
LED Commercial Downlight	1
Wire nut (A)	5
Template for 6 or 8 inch (B)	1
Box	1



ANNEX 1

Model	Watts	2,700 K	3,000 K	3,500 K	4,000 K	5,000 K
ASD-CDL7S-6A30WH	12 W	1,190 lm	1,202 lm	1,234 lm	1,255 lm	1,274 lm
	16 W	1,639 lm	1,669 lm	1,720 lm	1,750 lm	1,780 lm
	22 W	2,270 lm	2,330 lm	2,407 lm	2,438 lm	2,442 lm
	26 W	2,639 lm	2,721 lm	2,818 lm	2,851 lm	2,839 lm
	30 W	2,992 lm	3,101 lm	3,218 lm	3,257 lm	3,273 lm
ASD-CDL7S-8A35WH	16 W	1,715 lm	1,731 lm	1,781 lm	1,815 lm	1,846 lm
	22 W	2,399 lm	2,458 lm	2,495 lm	2,534 lm	2,557 lm
	26 W	2,798 lm	2,854 lm	2,948 lm	2,991 lm	3,007 lm
	35 W	3,711 lm	3,816 lm	3,969 lm	4,094 lm	4,046 lm
	35 W	3,711 lm	3,816 lm	3,969 lm	4,094 lm	4,046 lm

For most up-to-date spec sheets please refer to asd-lighting.com



LED COMMERCIAL DOWNLIGHT

CDL7S series

INSTALLATION GUIDE

IMPORTANT SAFETY INFORMATION:

Please read all the instructions below before installation.

- ▶ Make sure that the supply voltage corresponds to the rated product voltage.
- ▶ The product must be installed by a qualified electrician in accordance with the National Electrical Code and corresponding local codes.
- ▶ If the product is damaged, do not use it.

⚠ WARNING

Risk of personal injury – read and follow all warnings and installation instructions. Keep or give to the owner for future reference.

Risk of cuts: Wear gloves to prevent cuts or abrasions when removing from carton, handling, installing, and maintaining this product.

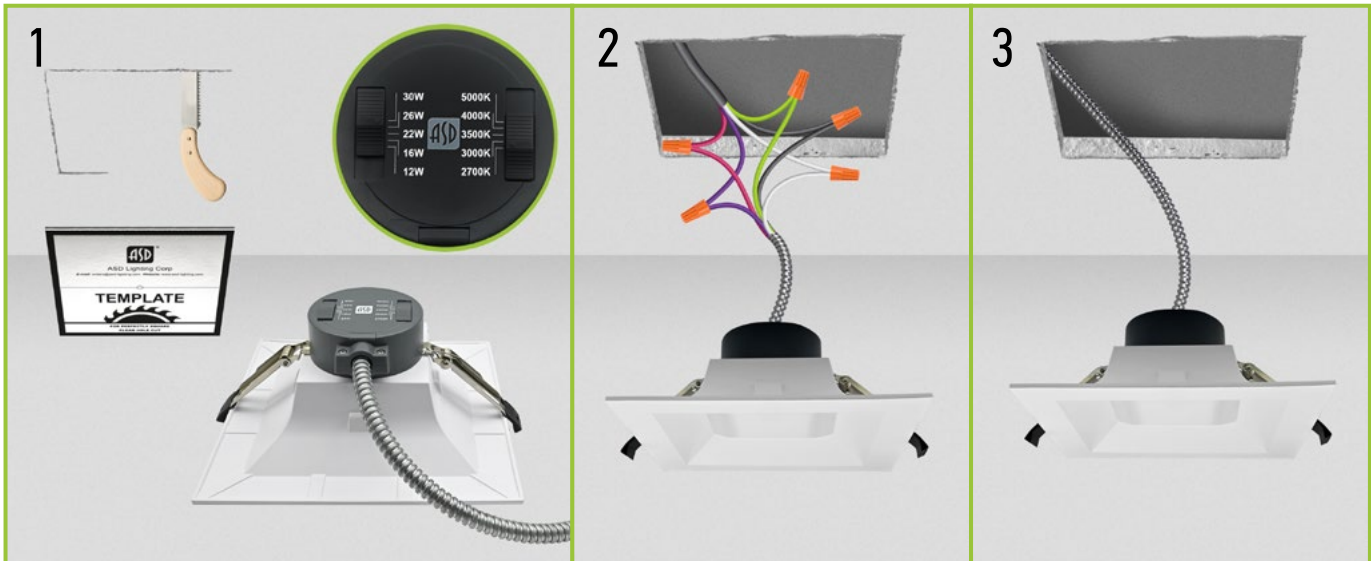
Risk of electric shock: This product must be installed in accordance with the applicable installation code by a person familiar with the construction and operation of the product and the hazards involved.

Risk of Fire: Minimum 194°F supply conductors. Consult a qualified electrician to ensure correct branch circuit conductor.

ASD® assumes no responsibility for claims arising out of improper or careless installation or handling of this product.

INSTALLATION STEPS:

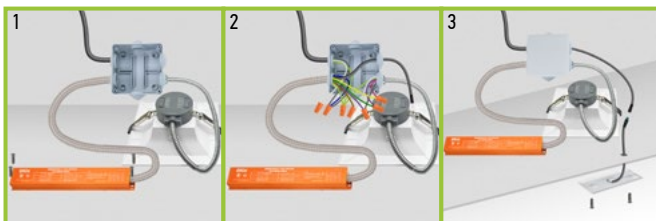
1. Use template to cut an appropriate sized hole. Before inserting the fixture into the mounting surface opening, choose power and color temperature with a simple switch.
2. Connect the wires using wire nuts: Black to Black, White to White, Green to Green.
3. Fold up the two spring mounting tabs and release as the fixture is placed into the mounting surface. Ensure that the spring mounting tabs have securely mounted the fixture so that the front trim is flush against the mounting surface.



BATTERY BACK-UP KIT INSTALLATION

BLD-HM08D | **BLD-HM15D** sold separately:

1. Secure the battery back-up to the ceiling.
2. Connect wires as shown on electrical diagram.
3. Connect test switch and affix it in the hole on surface.

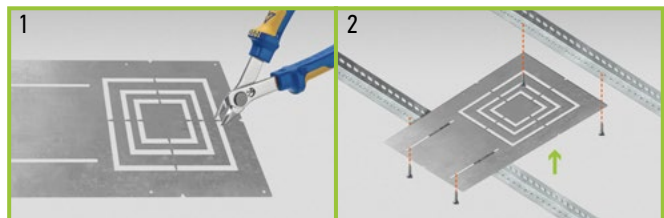


MOUNTING PLATE INSTALLATION

ASD-MPLS-346-FA | **ASD-MPLS-346-FS** | **ASD-MPLS-346-SC**

sold separately:

1. Remove the metal ring from the mounting plate according to the size of fixture.
2. Place the mounting plate and secure its position with screws on the beams.



For most up-to-date spec sheets please refer to asd-lighting.com

ASD LIGHTING CORP

E-mail: orders@asd-lighting.com | Web site: www.asd-lighting.com

