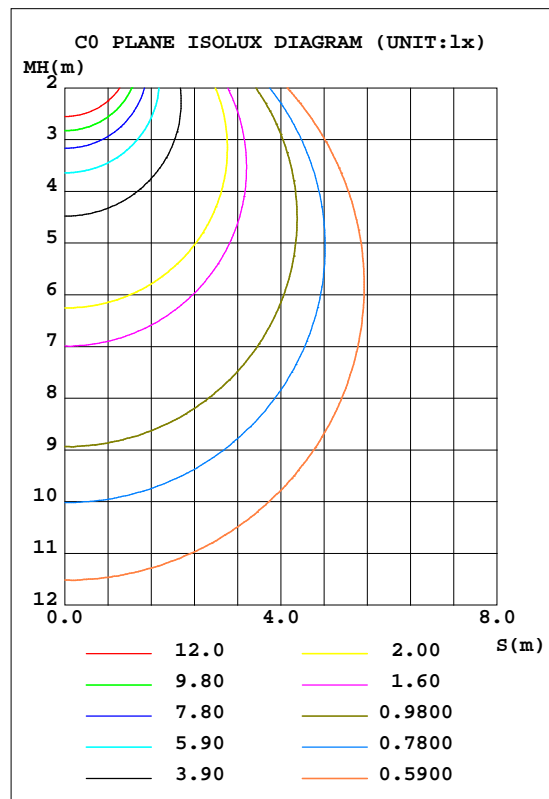
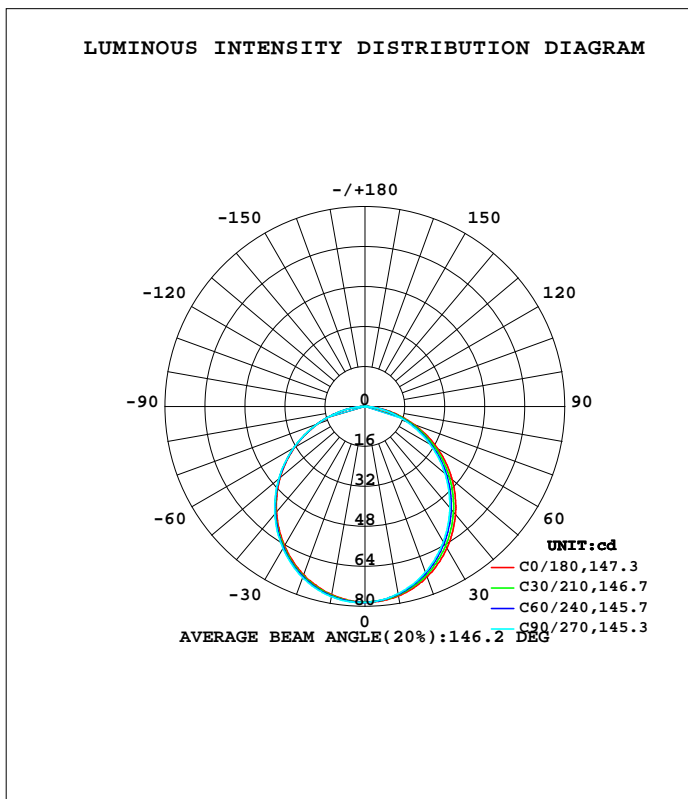


LUMINAIRE PHOTOMETRIC TEST REPORT

Test:U:120.12V I:0.0270A P:3.1643W PF:0.9774 Freq:59.98Hz Lamp Flux:214.20lx1 lm		
NAME: ASD-UCL-9D3CC-4000K	TYPE:	WEIGHT:
SPEC.:3W	DIM.:	SERIAL No.:
MFR.: ASD Lighting Corp	SUR.:	Shielding Angle:

DATA OF LAMP		PHOTOMETRIC DATA			
MODEL	ASD-UCL-9D3CC-4000K	Imax(cd)	78.51	S/MH(C0/180)	1.23
NOMINAL POWER(W)	3	LOR(%)	100.0	S/MH(C90/270)	1.24
RATED VOLTAGE(V)	120	TOTAL FLUX(lm)	214.20	h UP, DN(C0-180)	0.3,48.8
NOMINAL FLUX(lm)	214.201	CIE CLASS	DIRECT	h UP, DN(C180-360)	0.2,50.7
LAMPS INSIDE	1	h up(%)	0.5	CIBSE SHR NOM	1.25
TEST VOLTAGE(V)	120	h down(%)	99.5	CIBSE SHR MAX	1.35



C Range: 0 - 360DEG  
 C Interval: 15.0DEG  
 Test Speed: MEDIUM  
 Temperature:25.3DEG  
 Operators:  
 Test Date:10 March 2021

g Range: 0 - 180DEG  
 g Interval: 0.5DEG  
 Test System:EVERFINE GO-SPEX500\_V1 SYSTEM V2.0.402  
 Humidity:65.0%  
 Test Distance:3.300m [K=1.0000]  
 Remarks:

ZONAL FLUX DIAGRAM

ZONAL FLUX DIAGRAM:

g	C0	C45	C90	C135	C180	C225	C270	C315	g	F zone	F total	%lum,lamp
10	76.96	76.45	76.08	76.04	76.50	76.89	77.33	77.26	0- 10	7.399	7.399	3.45,3.45
20	72.59	71.48	70.67	70.85	71.75	72.27	72.95	73.02	10- 20	21.06	28.46	13.3,13.3
30	65.57	63.94	62.67	63.19	64.41	64.97	65.69	65.86	20- 30	31.56	60.02	28,28
40	56.38	54.46	52.91	53.61	55.12	55.55	56.17	56.46	30- 40	37.54	97.56	45.5,45.5
50	45.58	43.48	41.85	42.67	44.34	44.63	45.03	45.45	40- 50	38.38	135.9	63.5,63.5
60	33.52	31.56	29.93	30.81	32.41	32.52	32.81	33.12	50- 60	34.14	170.1	79.4,79.4
70	20.72	19.26	17.71	18.64	19.91	19.82	20.23	19.93	60- 70	25.52	195.6	91.3,91.3
80	8.669	7.415	6.472	7.054	7.993	8.025	8.181	7.971	70- 80	14.15	209.7	97.9,97.9
90	0.1182	0.0789	0.0862	0.0776	0.0462	0.0420	0.0454	0.0410	80- 90	3.370	213.1	99.5,99.5
100	0.1122	0.1100	0.1199	0.1098	0.0820	0.0812	0.0713	0.0688	90-100	0.0766	213.2	99.5,99.5
110	0.1830	0.1766	0.1722	0.1708	0.1427	0.1310	0.1197	0.1217	100-110	0.1284	213.3	99.6,99.6
120	0.2411	0.2369	0.2322	0.2241	0.1933	0.1691	0.1689	0.1700	110-120	0.1762	213.5	99.7,99.7
130	0.2714	0.2664	0.2724	0.2585	0.2127	0.2014	0.2080	0.2014	120-130	0.1954	213.7	99.8,99.8
140	0.2733	0.2853	0.2803	0.2808	0.2176	0.2092	0.2264	0.2064	130-140	0.1847	213.9	99.8,99.8
150	0.2651	0.2846	0.2820	0.2835	0.2028	0.2075	0.2102	0.2109	140-150	0.1528	214.0	99.9,99.9
160	0.2402	0.2294	0.2877	0.2168	0.1734	0.1590	0.1895	0.1786	150-160	0.1048	214.1	100,100
170	0.2226	0.2086	0.1987	0.1927	0.1793	0.1529	0.1998	0.1721	160-170	0.0559	214.2	100,100
180	0.2230	0.2220	0.2173	0.2206	0.2282	0.2272	0.2151	0.2225	170-180	0.0188	214.2	100,100
DEG	LUMINOUS INTENSITY:cd									UNIT:lm		

C Range: 0 - 360DEG  
 C Interval: 15.0DEG  
 Test Speed: MEDIUM  
 Temperature:25.3DEG  
 Operators:  
 Test Date:10 March 2021

g Range: 0 - 180DEG  
 g Interval: 0.5DEG  
 Test System:EVERFINE GO-SPEX500\_V1 SYSTEM V2.0.402  
 Humidity:65.0%  
 Test Distance:3.300m [K=1.0000]  
 Remarks:

UGR(Unified Glare Rating) Table

Test:U:120.12V I:0.0270A P:3.1643W PF:0.9774 Freq:59.98Hz Lamp Flux:214.20lx1 lm										
NAME: ASD-UCL-9D3CC-4000K					TYPE:			WEIGHT:		
SPEC.:3W					DIM.:			SERIAL No.:		
MFR.: ASD Lighting Corp					SUR.:			Shielding Angle:		
ceiling/cavity	0.7	0.7	0.5	0.5	0.3	0.7	0.7	0.5	0.5	0.3
walls	0.5	0.3	0.5	0.3	0.3	0.5	0.3	0.5	0.3	0.3
working plane	0.2	0.2	0.2	0.2	0.2	0.2	0.2	0.2	0.2	0.2
Room dimensions	Viewed crosswise					Viewed endwise				
x = 2H y = 2H	5.9	7.4	6.2	7.6	7.9	5.5	7.0	5.8	7.2	7.4
3H	7.5	8.8	7.8	9.1	9.3	6.9	8.2	7.2	8.5	8.7
4H	8.1	9.4	8.4	9.6	9.9	7.4	8.7	7.7	8.9	9.2
6H	8.5	9.7	8.8	10.0	10.3	7.7	8.9	8.0	9.2	9.5
8H	8.6	9.8	9.0	10.1	10.4	7.7	8.9	8.1	9.2	9.5
12H	8.7	9.8	9.0	10.1	10.4	7.7	8.9	8.1	9.2	9.5
4H 2H	6.5	7.8	6.8	8.0	8.3	6.1	7.4	6.4	7.7	8.0
3H	8.2	9.3	8.5	9.6	9.9	7.7	8.8	8.0	9.1	9.4
4H	8.9	9.9	9.3	10.3	10.6	8.3	9.3	8.7	9.7	10.0
6H	9.4	10.4	9.8	10.7	11.1	8.7	9.6	9.1	10.0	10.4
8H	9.6	10.5	10.0	10.9	11.3	8.8	9.7	9.2	10.0	10.4
12H	9.7	10.5	10.1	10.9	11.3	8.8	9.6	9.3	10.0	10.4
8H 4H	9.1	10.0	9.5	10.3	10.7	8.5	9.4	9.0	9.8	10.2
6H	9.7	10.5	10.2	10.9	11.3	9.1	9.8	9.5	10.2	10.7
8H	10.0	10.6	10.5	11.1	11.5	9.3	9.9	9.7	10.3	10.8
12H	10.1	10.7	10.6	11.1	11.6	9.3	9.9	9.8	10.3	10.8
12H 4H	9.1	9.9	9.5	10.3	10.7	8.5	9.3	9.0	9.7	10.2
6H	9.8	10.4	10.2	10.8	11.3	9.1	9.8	9.6	10.2	10.7
8H	10.0	10.6	10.5	11.0	11.5	9.3	9.9	9.8	10.3	10.8
Variations with the observer position at spacings:										
S = 1.0H	+ 0.2 / - 0.2					+ 0.2 / - 0.2				
1.5H	+ 0.2 / - 0.3					+ 0.2 / - 0.4				
2.0H	+ 0.2 / - 0.3					+ 0.2 / - 0.3				

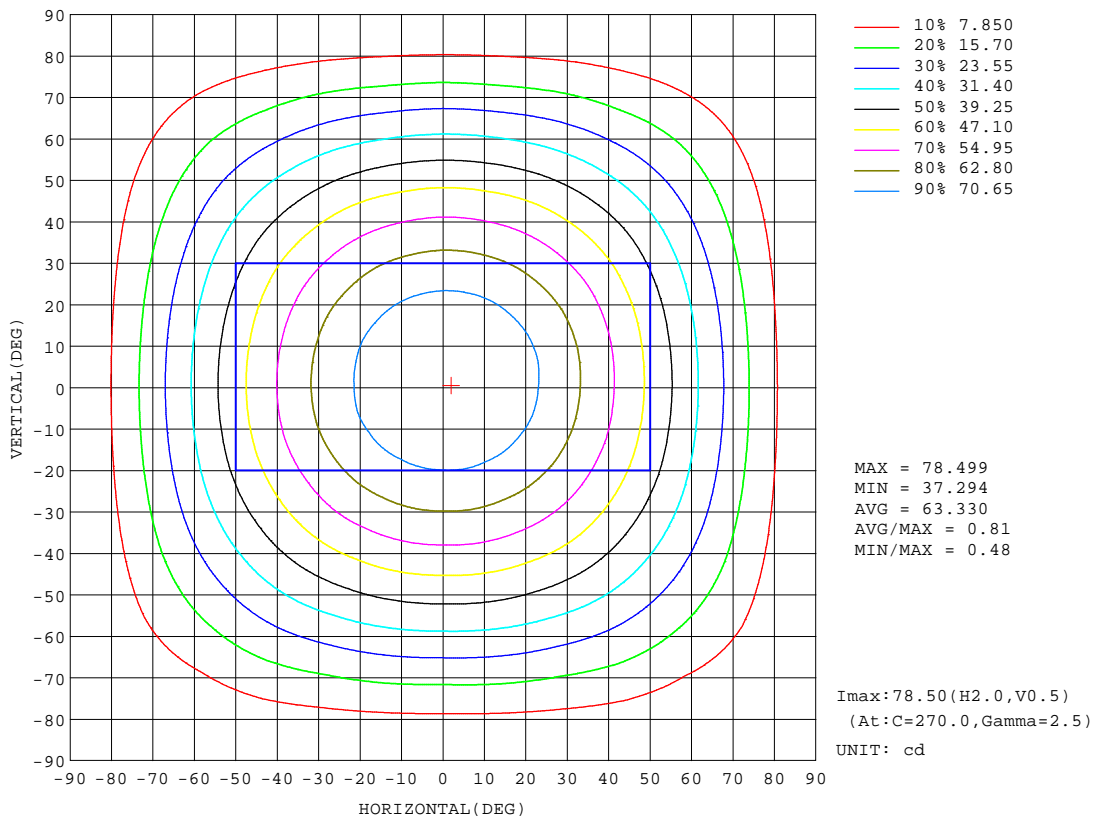
CIE Pub.117, 214.2 lm Total Lamp Luminous Flux Corrected (8log(F/F0) = -5.4)

C Range: 0 - 360DEG  
 C Interval: 15.0DEG  
 Test Speed: MEDIUM  
 Temperature:25.3DEG  
 Operators:  
 Test Date:10 March 2021

g Range: 0 - 180DEG  
 g Interval: 0.5DEG  
 Test System:EVERFINE GO-SPEX500\_V1 SYSTEM V2.0.402  
 Humidity:65.0%  
 Test Distance:3.300m [K=1.0000]  
 Remarks:

ISOCANDELA DIAGRAM

Test:U:120.12V I:0.0270A P:3.1643W PF:0.9774 Freq:59.98Hz Lamp Flux:214.20lx1 lm		
NAME: ASD-UCL-9D3CC-4000K	TYPE:	WEIGHT:
SPEC.:3W	DIM.:	SERIAL No.:
MFR.: ASD Lighting Corp	SUR.:	Shielding Angle:



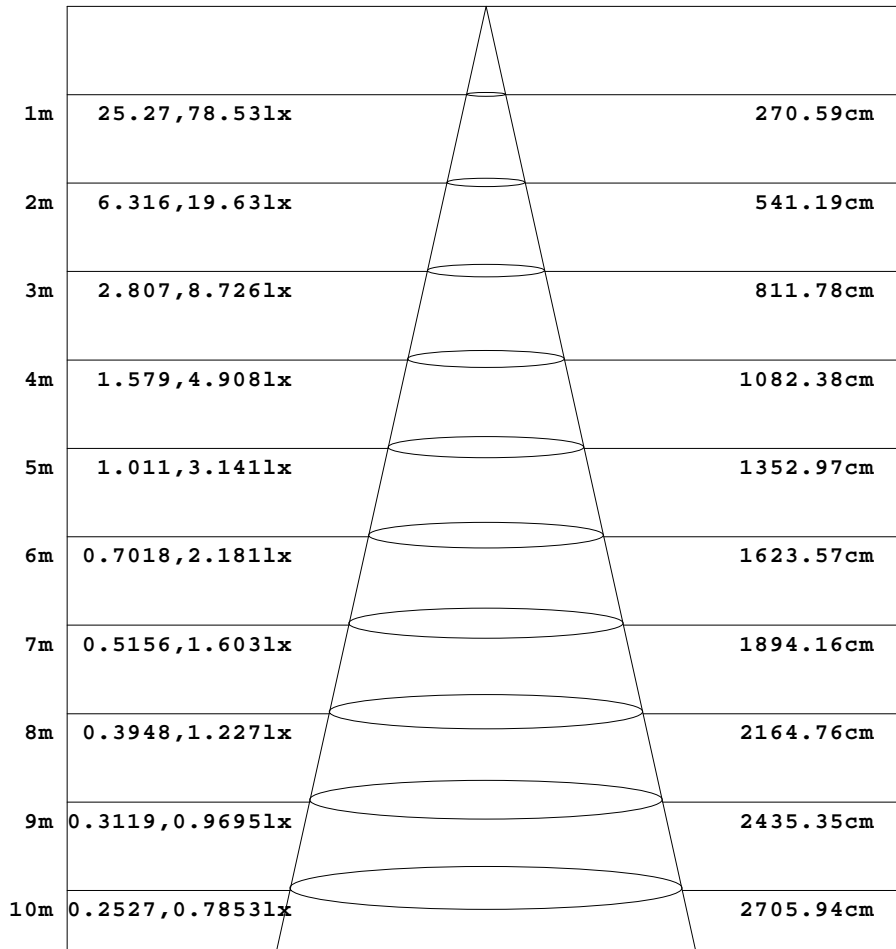
C Range: 0 - 360DEG  
 C Interval: 15.0DEG  
 Test Speed: MEDIUM  
 Temperature:25.3DEG  
 Operators:  
 Test Date:10 March 2021

g Range: 0 - 180DEG  
 g Interval: 0.5DEG  
 Test System:EVERFINE GO-SPEX500\_V1 SYSTEM V2.0.402  
 Humidity:65.0%  
 Test Distance:3.300m [K=1.0000]  
 Remarks:

**AAI Figure**

Test:U:120.12V I:0.0270A P:3.1643W PF:0.9774 Freq:59.98Hz Lamp Flux:214.20lx1 lm		
NAME: ASD-UCL-9D3CC-4000K	TYPE:	WEIGHT:
SPEC.:3W	DIM.:	SERIAL No.:
MFR.: ASD Lighting Corp	SUR.:	Shielding Angle:

Flux out:150.4 lm



Height                      Eavg, Emax                      Angle:107.06deg                      Diameter

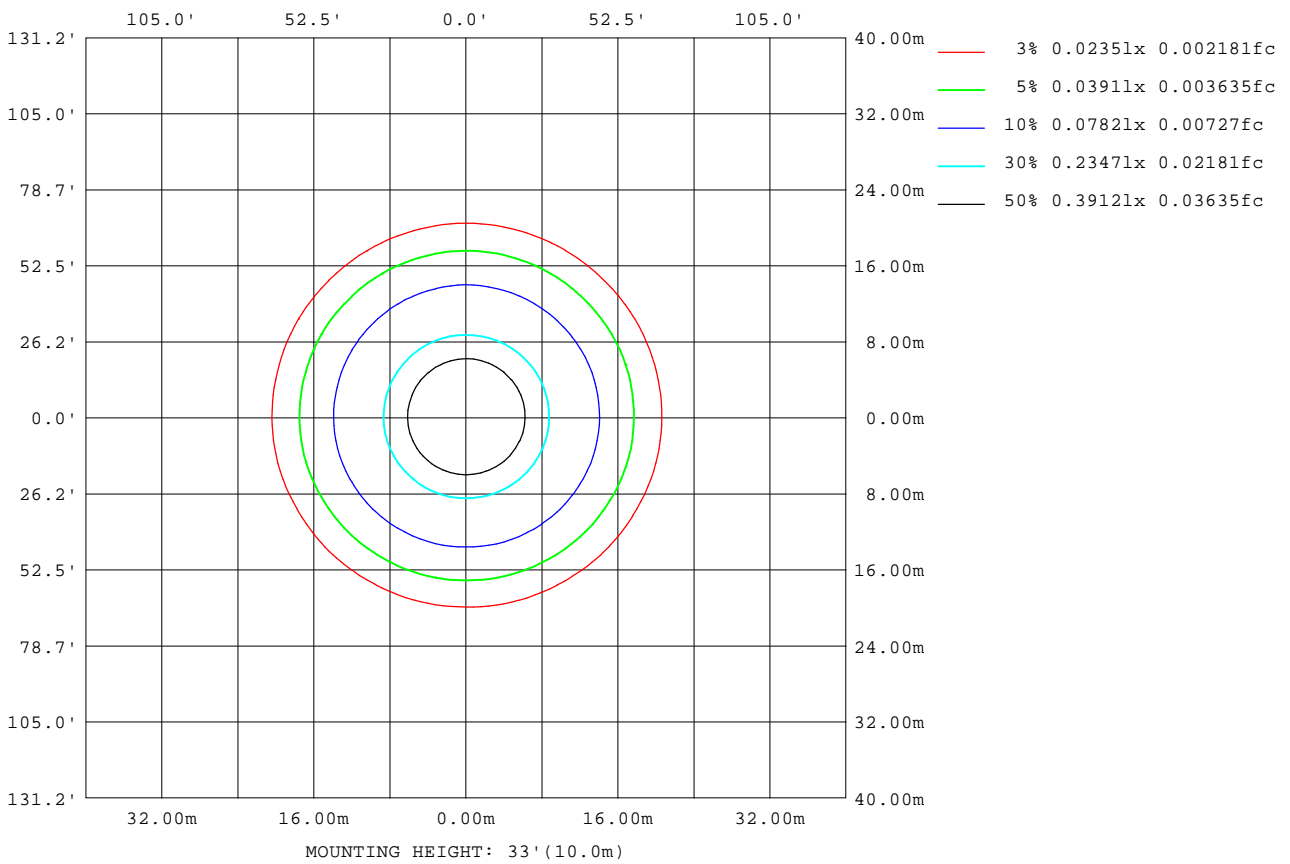
Note:The Curves indicate the illuminated area and the average illumination when the luminaire is at different distance.

C Range: 0 - 360DEG  
 C Interval: 15.0DEG  
 Test Speed: MEDIUM  
 Temperature:25.3DEG  
 Operators:  
 Test Date:10 March 2021

g Range: 0 - 180DEG  
 g Interval: 0.5DEG  
 Test System:EVERFINE GO-SPEX500\_V1 SYSTEM V2.0.402  
 Humidity:65.0%  
 Test Distance:3.300m [K=1.0000]  
 Remarks:

**ISOLUX DIAGRAM**

Test:U:120.12V I:0.0270A P:3.1643W PF:0.9774 Freq:59.98Hz Lamp Flux:214.20lx1 lm		
NAME: ASD-UCL-9D3CC-4000K	TYPE:	WEIGHT:
SPEC.:3W	DIM.:	SERIAL No.:
MFR.: ASD Lighting Corp	SUR.:	Shielding Angle:



**C Range: 0 - 360DEG**  
**C Interval: 15.0DEG**  
**Test Speed: MEDIUM**  
**Temperature:25.3DEG**  
**Operators:**  
**Test Date:10 March 2021**

**g Range: 0 - 180DEG**  
**g Interval: 0.5DEG**  
**Test System:EVERFINE GO-SPEX500\_V1 SYSTEM V2.0.402**  
**Humidity:65.0%**  
**Test Distance:3.300m [K=1.0000]**  
**Remarks:**

LED Avg.L Report

Test:U:120.12V I:0.0270A P:3.1643W PF:0.9774 Freq:59.98Hz Lamp Flux:214.20lx1 lm		
NAME: ASD-UCL-9D3CC-4000K	TYPE:	WEIGHT:
SPEC.:3W	DIM.:	SERIAL No.:
MFR.: ASD Lighting Corp	SUR.:	Shielding Angle:

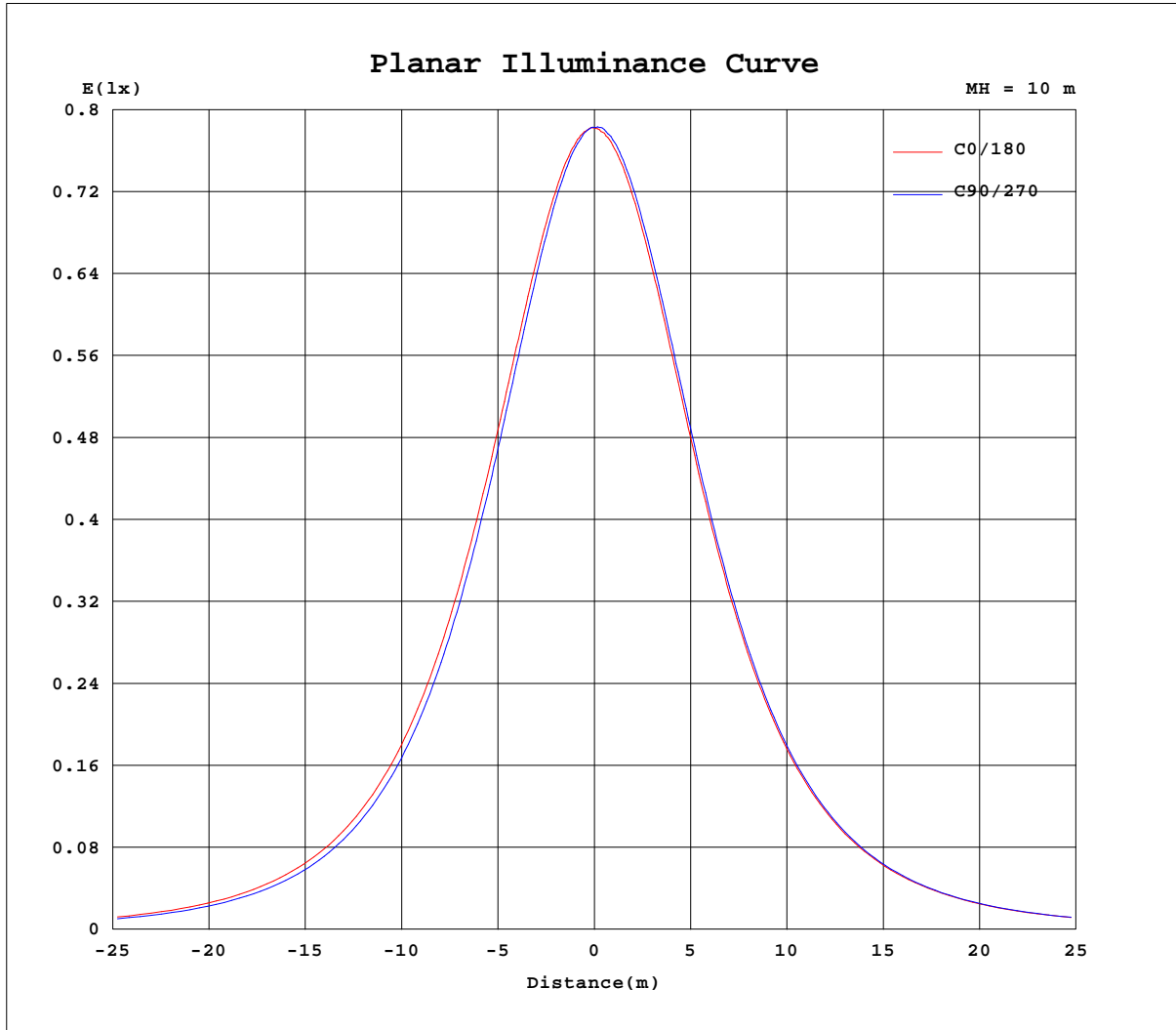
AvgL	cd/m2
L_0~180(65)av	126
L_0~180(75)av	109
L_0~180(85)av	79
L_90~270(65)av	119
L_90~270(75)av	99
L_90~270(85)av	59
L_45(65)av	122
L_45(75)av	102
L_45(85)av	65

Standard: GB/T 29293-2012

C Range: 0 - 360DEG  
 C Interval: 15.0DEG  
 Test Speed: MEDIUM  
 Temperature:25.3DEG  
 Operators:  
 Test Date:10 March 2021

g Range: 0 - 180DEG  
 g Interval: 0.5DEG  
 Test System:EVERFINE GO-SPEX500\_V1 SYSTEM V2.0.402  
 Humidity:65.0%  
 Test Distance:3.300m [K=1.0000]  
 Remarks:

Planar Illuminance Curve



C Range: 0 - 360DEG  
 C Interval: 15.0DEG  
 Test Speed: MEDIUM  
 Temperature: 25.3DEG  
 Operators:  
 Test Date: 10 March 2021

g Range: 0 - 180DEG  
 g Interval: 0.5DEG  
 Test System: EVERFINE GO-SPEX500\_V1 SYSTEM V2.0.402  
 Humidity: 65.0%  
 Test Distance: 3.300m [K=1.0000]  
 Remarks:

LUMINOUS DISTRIBUTION INTENSITY DATA

Test:U:120.12V I:0.0270A P:3.1643W PF:0.9774 Freq:59.98Hz Lamp Flux:214.20lx1 lm		
NAME: ASD-UCL-9D3CC-4000K	TYPE:	WEIGHT:
SPEC.:3W	DIM.:	SERIAL No.:
MFR.: ASD Lighting Corp	SUR.:	Shielding Angle:

Table--1

UNIT: cd

C(DEG) g (DEG)	0	15	30	45	60	75	90	105	120	135	150	165	180	195	210	225	240	255	270
0	78.3	78.3	78.3	78.3	78.3	78.3	78.3	78.3	78.3	78.3	78.3	78.3	78.3	78.3	78.3	78.3	78.3	78.3	78.3
5	78.1	78.0	77.9	77.8	77.8	77.7	77.7	77.6	77.6	77.6	77.7	77.7	77.9	77.9	77.9	78.0	78.2	78.1	78.4
10	77.0	76.9	76.5	76.4	76.3	76.2	76.1	76.0	76.0	76.0	76.2	76.3	76.5	76.7	76.8	76.9	77.0	77.1	77.3
15	75.2	74.9	74.5	74.3	74.0	73.9	73.7	73.6	73.7	73.9	74.0	74.3	74.4	74.7	74.8	74.9	75.2	75.2	75.5
20	72.6	72.3	71.8	71.5	71.2	70.8	70.7	70.5	70.6	70.9	71.1	71.4	71.8	71.9	72.2	72.3	72.6	72.7	73.0
25	69.3	69.0	68.4	68.0	67.5	67.2	66.9	66.9	67.0	67.3	67.6	68.0	68.3	68.5	68.8	68.9	69.1	69.3	69.6
30	65.6	65.2	64.5	63.9	63.3	63.0	62.7	62.6	62.8	63.2	63.6	64.1	64.4	64.7	64.9	65.0	65.3	65.2	65.7
35	61.2	60.9	60.0	59.4	58.7	58.3	58.0	57.9	58.1	58.6	58.9	59.7	59.9	60.1	60.5	60.6	60.7	60.8	61.2
40	56.4	56.0	55.1	54.5	53.6	53.3	52.9	52.9	53.1	53.6	54.0	54.7	55.1	55.3	55.6	55.9	55.8	56.2	
45	51.2	50.7	49.9	49.1	48.3	47.8	47.5	47.4	47.7	48.3	48.7	49.5	49.9	50.1	50.4	50.3	50.6	50.5	50.8
50	45.6	45.1	44.2	43.5	42.7	42.2	41.9	41.9	42.1	42.7	43.2	43.9	44.3	44.5	44.8	44.6	44.8	44.8	45.0
55	39.7	39.2	38.3	37.6	36.8	36.3	36.0	36.0	36.2	36.8	37.3	38.0	38.5	38.6	38.8	38.7	38.9	38.8	39.1
60	33.5	33.1	32.2	31.6	30.7	30.3	29.9	30.0	30.2	30.8	31.2	32.0	32.4	32.5	32.7	32.5	32.7	32.5	32.8
65	27.2	26.8	25.9	25.4	24.5	24.2	23.8	23.9	24.1	24.6	25.0	25.7	26.1	26.2	26.4	26.2	26.3	26.2	26.5
70	20.7	20.5	19.6	19.3	18.4	18.2	17.7	18.0	17.9	18.6	18.8	19.6	19.9	19.8	20.1	19.8	20.1	19.8	20.2
75	14.4	14.3	13.5	13.2	12.3	12.2	11.8	12.0	12.0	12.7	12.8	13.5	13.7	13.6	13.9	13.6	13.9	13.6	14.0
80	8.67	8.51	7.12	7.41	6.94	6.73	6.47	6.56	6.64	7.05	6.45	7.77	7.99	8.03	8.16	8.02	8.11	8.01	8.18
85	3.68	2.17	2.28	2.58	2.26	2.18	2.05	2.12	2.14	2.43	2.17	1.67	3.19	3.20	3.26	3.10	3.11	2.99	3.10
90	0.12	0.08	0.09	0.08	0.09	0.09	0.09	0.08	0.09	0.08	0.08	0.07	0.05	0.04	0.04	0.04	0.04	0.05	0.05
95	0.09	0.10	0.11	0.09	0.08	0.08	0.09	0.08	0.09	0.08	0.09	0.09	0.05	0.05	0.05	0.05	0.05	0.05	0.04
100	0.11	0.12	0.13	0.11	0.11	0.12	0.12	0.11	0.11	0.11	0.11	0.11	0.08	0.08	0.07	0.08	0.07	0.07	0.07
105	0.15	0.14	0.15	0.14	0.14	0.14	0.14	0.14	0.14	0.14	0.14	0.14	0.11	0.11	0.10	0.11	0.09	0.10	0.10
110	0.18	0.18	0.17	0.18	0.17	0.17	0.17	0.17	0.17	0.17	0.17	0.18	0.14	0.13	0.12	0.13	0.12	0.13	0.12
115	0.21	0.21	0.21	0.21	0.21	0.21	0.21	0.20	0.20	0.20	0.20	0.21	0.17	0.16	0.15	0.15	0.14	0.15	0.14
120	0.24	0.24	0.24	0.24	0.23	0.24	0.23	0.22	0.22	0.22	0.23	0.23	0.19	0.18	0.17	0.17	0.16	0.16	0.17
125	0.26	0.25	0.26	0.26	0.25	0.25	0.26	0.25	0.24	0.24	0.24	0.25	0.21	0.19	0.18	0.19	0.18	0.18	0.18
130	0.27	0.26	0.27	0.27	0.26	0.25	0.27	0.26	0.25	0.26	0.26	0.26	0.21	0.20	0.20	0.20	0.19	0.20	0.21
135	0.27	0.27	0.28	0.28	0.27	0.26	0.28	0.27	0.26	0.27	0.27	0.26	0.22	0.21	0.20	0.21	0.20	0.20	0.21
140	0.27	0.27	0.28	0.29	0.28	0.27	0.28	0.27	0.28	0.28	0.27	0.26	0.22	0.21	0.20	0.21	0.21	0.22	0.23
145	0.27	0.26	0.28	0.28	0.29	0.28	0.28	0.28	0.28	0.28	0.27	0.26	0.21	0.20	0.20	0.19	0.21	0.22	0.25
150	0.27	0.25	0.27	0.28	0.29	0.28	0.28	0.27	0.28	0.28	0.25	0.25	0.20	0.19	0.19	0.21	0.19	0.20	0.21
155	0.26	0.25	0.25	0.27	0.27	0.28	0.28	0.27	0.27	0.25	0.24	0.24	0.19	0.18	0.18	0.18	0.19	0.21	0.21
160	0.24	0.24	0.23	0.23	0.25	0.28	0.29	0.26	0.24	0.22	0.22	0.23	0.17	0.18	0.16	0.16	0.17	0.19	0.19
165	0.22	0.23	0.21	0.21	0.22	0.23	0.23	0.22	0.20	0.20	0.20	0.21	0.16	0.16	0.14	0.15	0.17	0.19	0.20
170	0.22	0.22	0.22	0.21	0.21	0.21	0.20	0.20	0.19	0.19	0.21	0.21	0.18	0.17	0.16	0.15	0.16	0.18	0.20
175	0.22	0.22	0.22	0.22	0.21	0.22	0.21	0.21	0.22	0.21	0.20	0.21	0.20	0.19	0.18	0.18	0.18	0.18	0.18
180	0.22	0.22	0.22	0.22	0.22	0.21	0.22	0.21	0.21	0.22	0.22	0.21	0.23	0.22	0.22	0.23	0.22	0.21	0.22

C Range: 0 - 360DEG

C Interval: 15.0DEG

Test Speed: MEDIUM

Temperature:25.3DEG

Operators:

Test Date:10 March 2021

g Range: 0 - 180DEG

g Interval: 0.5DEG

Test System:EVERFINE GO-SPEX500\_V1 SYSTEM V2.0.402

Humidity:65.0%

Test Distance:3.300m [K=1.0000]

Remarks:

LUMINOUS DISTRIBUTION INTENSITY DATA

Test:U:120.12V I:0.0270A P:3.1643W PF:0.9774 Freq:59.98Hz Lamp Flux:214.20lx1 lm		
NAME: ASD-UCL-9D3CC-4000K	TYPE:	WEIGHT:
SPEC.:3W	DIM.:	SERIAL No.:
MFR.: ASD Lighting Corp	SUR.:	Shielding Angle:

Table--2

UNIT: cd

C(DEG) g (DEG)	285	300	315	330	345														
0	78.3	78.3	78.3	78.3	78.3														
5	78.2	78.2	78.2	78.2	78.1														
10	77.2	77.4	77.3	77.3	77.1														
15	75.4	75.6	75.5	75.4	75.3														
20	72.8	73.1	73.0	73.1	72.8														
25	69.5	69.8	69.7	69.8	69.7														
30	65.6	65.9	65.9	66.0	65.9														
35	61.1	61.4	61.4	61.7	61.5														
40	56.1	56.4	56.5	56.7	56.6														
45	50.7	51.1	51.2	51.5	51.4														
50	45.0	45.4	45.5	45.8	45.8														
55	39.0	39.3	39.4	39.8	39.8														
60	32.8	33.0	33.1	33.5	33.6														
65	26.4	26.6	26.6	27.0	27.1														
70	19.9	20.2	19.9	20.5	20.5														
75	13.6	13.8	13.5	13.9	14.1														
80	8.08	8.18	7.97	8.04	8.24														
85	3.07	3.24	3.24	3.37	3.10														
90	0.05	0.04	0.04	0.04	0.06														
95	0.04	0.05	0.04	0.04	0.05														
100	0.07	0.07	0.07	0.07	0.08														
105	0.10	0.09	0.09	0.10	0.11														
110	0.12	0.12	0.12	0.12	0.14														
115	0.15	0.14	0.15	0.15	0.16														
120	0.17	0.16	0.17	0.18	0.19														
125	0.19	0.18	0.18	0.19	0.20														
130	0.21	0.20	0.20	0.20	0.21														
135	0.21	0.21	0.21	0.20	0.21														
140	0.23	0.23	0.21	0.20	0.21														
145	0.24	0.21	0.21	0.21	0.20														
150	0.21	0.20	0.21	0.19	0.20														
155	0.21	0.20	0.20	0.19	0.19														
160	0.19	0.18	0.18	0.18	0.19														
165	0.20	0.17	0.17	0.17	0.18														
170	0.19	0.16	0.17	0.19	0.18														
175	0.18	0.18	0.19	0.20	0.20														
180	0.21	0.21	0.22	0.22	0.22														

C Range: 0 - 360DEG  
 C Interval: 15.0DEG  
 Test Speed: MEDIUM  
 Temperature:25.3DEG  
 Operators:  
 Test Date:10 March 2021

g Range: 0 - 180DEG  
 g Interval: 0.5DEG  
 Test System:EVERFINE GO-SPEX500\_V1 SYSTEM V2.0.402  
 Humidity:65.0%  
 Test Distance:3.300m [K=1.0000]  
 Remarks: