



# LED VANITY LINEAR

## LVF23 series

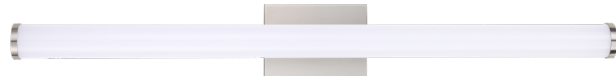
- ▶ **DESIGN** - LED VANITY LINEAR has a sleek, modern design that allows you to have a stylish look with efficient lighting. Durable housing resistant to rust and impact provides many years of service. The acrylic lens with a 150° beam angle grants you even light distribution. It is designed to operate on 120V circuits.
- ▶ **COLOR SELECTABLE** - You can choose either a 3,000K warm white, 4,000K cool white or 5,000K daylight color temperature.
- ▶ **DIMMING** - Smooth triac dimming capabilities ranging from 10% to 100% with modern LED dimmers allow you to control the look and feel of your space.
- ▶ **APPLICATION** - This fixture creates a bright light that is perfect for bathroom spaces or any other common areas. It is also Damp Locations rated. Can be installed vertically and horizontally.
- ▶ **ADVANTAGES** - With a lifespan of 50,000 hours, these fixtures are made to last decades under normal operation! ASD provides a 5-year limited warranty along with ETL and Energy Star certifications to guarantee top quality products and safety!



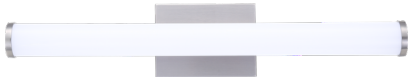
Finish:  Nickel  Black



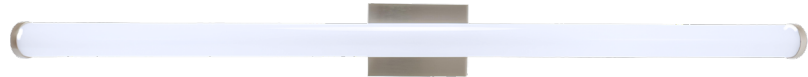
18 inch



36 inch



24 inch



48 inch

### PRODUCT PRESENTATION:

Model	Size	Power	Voltage	Dimming	Lumens	CCT	Finish	Dimensions	Certification
ASD-LVF23-18D20CC-BK	18 inch	20 W	120 V	Triac	1,789lm	3,000/4,000/5,000 K	Black	18" x 4 1/2" x 3"	ETL(4001256)
ASD-LVF23-18D20CC-NK	18 inch	20 W	120 V	Triac	1,789lm	3,000/4,000/5,000 K	Nickel	18" x 4 1/2" x 3"	ETL(4001256)
ASD-LVF23-18D20-NK-2P	18 inch	20 W	120 V	Triac	1,789lm	3,000/4,000/5,000 K	Nickel	18" x 3" x 4 1/2"	ETL(5032534)
ASD-LVF23-24D25CC-BK	24 inch	25 W	120 V	Triac	2,573lm	3,000/4,000/5,000 K	Black	24" x 4 1/2" x 3"	ETL(4001256)
ASD-LVF23-24D25CC-NK	24 inch	25 W	120 V	Triac	2,573lm	3,000/4,000/5,000 K	Nickel	24" x 4 1/2" x 3"	ETL(4001256)
ASD-LVF23-24D25-NK-2P	24 inch	25 W	120 V	Triac	2,573lm	3,000/4,000/5,000 K	Nickel	24" x 4 1/2" x 3"	ETL(5032534)
ASD-LVF23-36D30CC-BK	36 inch	30 W	120 V	Triac	3,141lm	3,000/4,000/5,000 K	Black	36" x 4 1/2" x 3"	ETL(4001256)
ASD-LVF23-36D30CC-NK	36 inch	30 W	120 V	Triac	3,141lm	3,000/4,000/5,000 K	Nickel	36" x 4 1/2" x 3"	ETL(4001256)
ASD-LVF23-48D35CC-BK	48 inch	35 W	120 V	Triac	3,812lm	3,000/4,000/5,000 K	Black	47 5/16" x 4 1/2" x 3"	ETL(4001256)
ASD-LVF23-48D35CC-NK	48 inch	35 W	120 V	Triac	3,812lm	3,000/4,000/5,000 K	Nickel	47 5/16" x 4 1/2" x 3"	ETL(4001256)

For most up-to-date spec sheets please refer to [asd-lighting.com](http://asd-lighting.com)



# LED VANITY LINEAR

LVF23 series

## ORDERING INFORMATION

Model	Product dimensions	Weight	Pcs.(pack) Per carton	Carton size	Carton weight	UPC	GTIN 14
ASD-LVF23-18D20CC-BK	18" x 4 1/2" x 3"	1.3 lbs(0.6kg)	4	20.28" x 10.63" x 8.66"	8.3 lbs	81012811391	10810128113912
ASD-LVF23-18D20CC-NK	18" x 4 1/2" x 3"	1.3 lbs(0.6kg)	4	20.28" x 10.63" x 8.66"	8.3 lbs	81005073135	30810050731356
ASD-LVF23-18D20-NK-2P	18" x 3" x 4 1/2"	2.6 lbs(1.2kg)	4(2)	20.28" x 10.63" x 8.66"	8.3 lbs	81019020043	10810190200435
ASD-LVF23-24D25CC-BK	24" x 4 1/2" x 3"	1.6 lbs(0.7kg)	4	26.18" x 8.66" x 10.63"	10.0 lbs	81012811392	10810128113929
ASD-LVF23-24D25CC-NK	24" x 4 1/2" x 3"	1.6 lbs(0.7kg)	4	26.20" x 8.70" x 10.60"	10.0 lbs	81005073136	30810050731363
ASD-LVF23-24D25-NK-2P	24" x 4 1/2" x 3"	3.2 lbs(1.5kg)	4(2)	26.18" x 10.63" x 8.66"	9.7 lbs	81019020045	10810190200459
ASD-LVF23-36D30CC-BK	36" x 4 1/2" x 3"	2.1 lbs(1.0kg)	4	38.19" x 8.66" x 10.63"	12.6 lbs	81012811937	10810128119372
ASD-LVF23-36D30CC-NK	36" x 4 1/2" x 3"	2.1 lbs(1.0kg)	4	38.20" x 8.70" x 10.60"	12.6 lbs	81005073225	30810050732254
ASD-LVF23-48D35CC-BK	47 5/16" x 4 1/2" x 3"	2.8 lbs(1.3kg)	4	49.80" x 10.63" x 8.66"	17.9 lbs	81012811938	10810128119389
ASD-LVF23-48D35CC-NK	47 5/16" x 4 1/2" x 3"	2.8 lbs(1.3kg)	4	49.80" x 10.63" x 8.66"	17.9 lbs	81012811213	10810128112137

## TECHNICAL PARAMETERS:

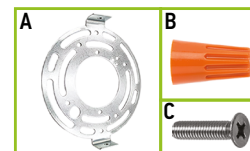
Model	Work environment	Operating temperature	Power factor	Surge protection	Housing	Lens	CRI	Beam Angle
ASD-LVF23-18D20CC-BK	Damp location	-4°F to 113°F(-20°C to 45°C)	>0.9	1kV	Steel	Acrylic	>80	150°
ASD-LVF23-18D20CC-NK	Damp location	-4°F to 113°F(-20°C to 45°C)	>0.9	1kV	Steel	Acrylic	>80	150°
ASD-LVF23-18D20-NK-2P	Damp location	-4°F to 113°F(-20°C to 45°C)	>0.9	1kV	Steel	Acrylic	>80	150°
ASD-LVF23-24D25CC-BK	Damp location	-4°F to 113°F(-20°C to 45°C)	>0.9	1kV	Steel	Acrylic	>80	150°
ASD-LVF23-24D25CC-NK	Damp location	-4°F to 113°F(-20°C to 45°C)	>0.9	1kV	Steel	Acrylic	>80	150°
ASD-LVF23-24D25-NK-2P	Damp location	-4°F to 113°F(-20°C to 45°C)	>0.9	2kV	Steel	Acrylic	>80	150°
ASD-LVF23-36D30CC-BK	Damp location	-4°F to 113°F(-20°C to 45°C)	>0.9	1kV	Steel	Acrylic	>80	150°
ASD-LVF23-36D30CC-NK	Damp location	-4°F to 113°F(-20°C to 45°C)	>0.9	1kV	Steel	Acrylic	>80	150°
ASD-LVF23-48D35CC-BK	Damp location	-4°F to 113°F(-20°C to 45°C)	>0.9	1kV	Steel	Acrylic	>80	150°
ASD-LVF23-48D35CC-NK	Damp location	-4°F to 113°F(-20°C to 45°C)	>0.9	1kV	Steel	Acrylic	>80	150°

## DIMMING COMPATIBLE CONTROLS:

Brand	Lutron	Leviton
Models	MACL-153MLH-WH	R02-DW6HD-2RW
	STCL-153PH-WH	R00-RNL06-0TW
	PD-6WCL-WH-R	R68-06674-P0T
	DVCL-153PR	DSL06
	P-PKG1W	

## PACKAGE CONTENTS:

Description	Quantity
LED Vanity Linear	1
Mounting bracket (A)	1
Wire nut (B)	3
1/4" screw (C)	2
Box	1



## INSTALLATION GUIDE

### IMPORTANT SAFETY INFORMATION:

Please read all the instructions below before installation!

- ▶ Make sure that the supply voltage corresponds to the rated product voltage.
- ▶ The product must be installed by a qualified electrician in accordance with the National Electrical Code and corresponding local codes.
- ▶ If the product is damaged, do not use it.

### ⚠ WARNING

**RISK OF PERSONAL INJURY – READ and follow all WARNINGS and installation instructions.** Keep or give to the owner for future reference.

**Risk of cuts:** Wear gloves to prevent cuts or abrasions when removing from carton, handling, installing, and maintaining this product.

**Risk of electric shock:** This product must be installed in accordance with the applicable installation code by a person familiar with the construction and operation of the product and the hazards involved.

**Risk of Fire:** Minimum 194°F supply conductors. Consult a qualified electrician to ensure correct branch circuit conductor.

ASD® assumes no responsibility for claims arising out of improper or careless installation or handling of this product.

For most up-to-date spec sheets please refer to [asd-lighting.com](http://asd-lighting.com)

ASD LIGHTING CORP

E-mail: [orders@asd-lighting.com](mailto:orders@asd-lighting.com) | Web site: [www.asd-lighting.com](http://www.asd-lighting.com)



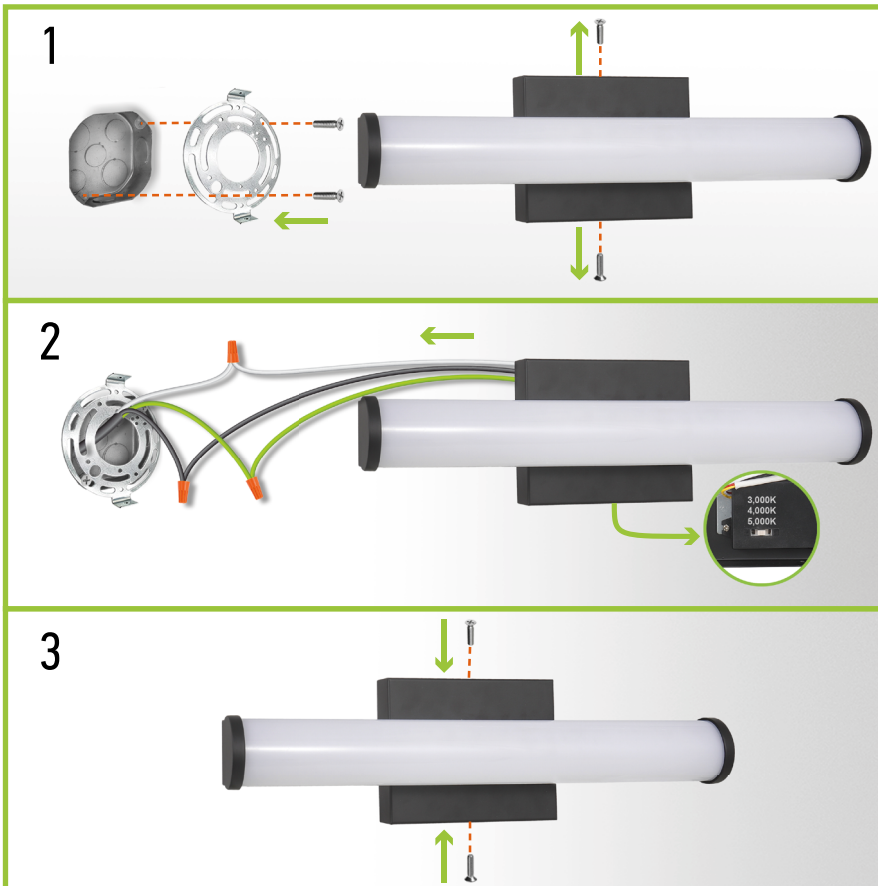


# LED VANITY LINEAR

LVF23 series

## INSTALLATION STEPS:

1. Pull the power supply wires out of the outlet box. Attach the mounting bracket to the outlet box (not included) using the mounting screws.
2. Connect the wires: black to black, white to white, green to green. Secure the connection with wire nuts. Choose needed color temperature by adjusting switch position on the backside of the fixture.
3. Place the fixture backplate of the fixture body over the mounting bracket. Insert the fixture screws and tighten to secure the fixture body on the surface.



For most up-to-date spec sheets please refer to [asd-lighting.com](http://asd-lighting.com)

ASD LIGHTING CORP

E-mail: [orders@asd-lighting.com](mailto:orders@asd-lighting.com) | Web site: [www.asd-lighting.com](http://www.asd-lighting.com)

