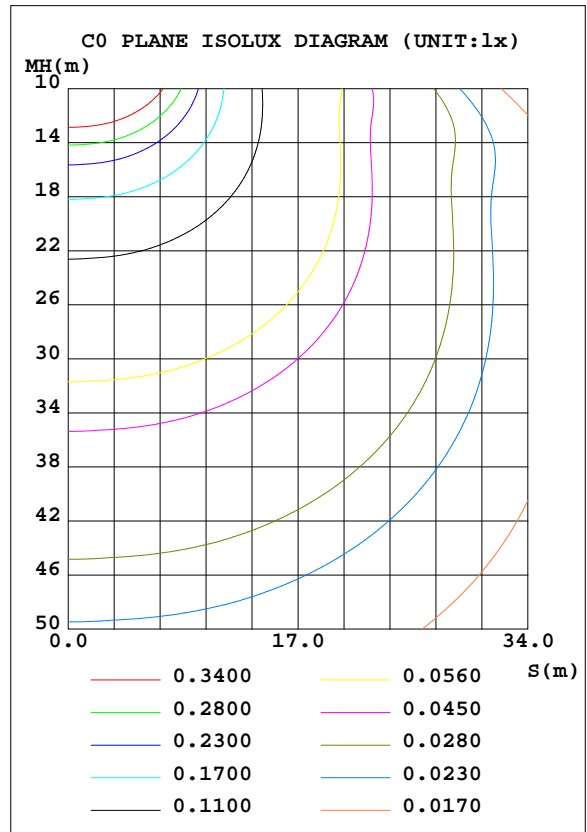
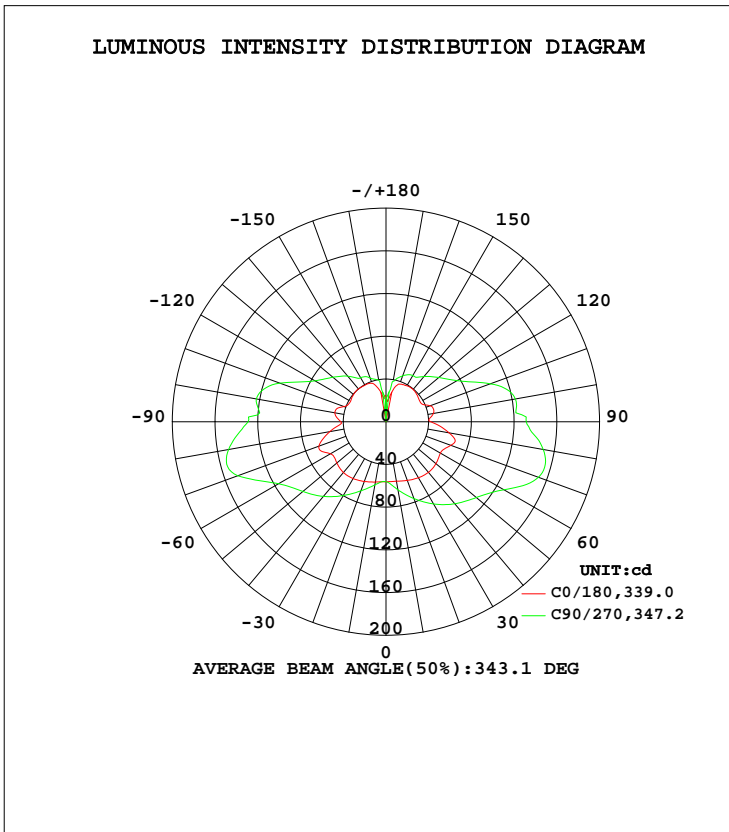


LUMINAIRE PHOTOMETRIC TEST REPORT

Test:U:120.09V I:0.2874A P:20.450W PF:0.5925 Freq:60.00Hz Lamp Flux:947.087x1 lm		
NAME:ASD-LWS27C-18D20SM-RGBW-BK	TYPE: N/A	WEIGHT: N/A
SPEC.:6500K	DIM.: N/A	SERIAL No.: N/A
MFR.: ASD Lighting Corp	SUR.: N/A	Shielding Angle: N/A

DATA OF LAMP		PHOTOMETRIC DATA Eff: 46.31 lm/W			
MODEL	ASD-LWS27C-18D20SM-RGBW-BK	I <sub>max</sub> (cd)	154.6	S/MH(C0/180)	1.67
NOMINAL POWER(W)	20	LOR(%)	100.0	S/MH(C90/270)	2.45
RATED VOLTAGE(V)	120	TOTAL FLUX(lm)	947.09	η UP, DN(C0-180)	20.2,29.0
NOMINAL FLUX(lm)	947.087	CIE CLASS	DIFFUSE	η UP, DN(C180-360)	20.4,30.4
LAMPS INSIDE	1	η up(%)	40.6	CIBSE SHR NOM	2.00
TEST VOLTAGE(V)	120	η down(%)	59.4	CIBSE SHR MAX	2.00



C Range: 0 - 360DEG  
 C Interval: 22.5DEG  
 Test Speed: HIGH  
 Temperature:24.9DEG  
 Operators:Water  
 Test Date:2024-10-21

γ Range: 0 - 180DEG  
 γ Interval: 1.0DEG  
 Test System:EVERFINE GO-R5000\_V2 SYSTEM V2.00.446  
 Humidity:45%  
 Test Distance:2.519m [K=1.0000]  
 Remarks:

ZONAL FLUX DIAGRAM

ZONAL FLUX DIAGRAM:

γ	C0	C45	C90	C135	C180	C225	C270	C315	γ	Φ zone	Φ total	%lum, lamp
10	57.34	58.40	60.04	58.13	56.58	61.30	64.83	62.00	0- 10	5.542	5.542	0.59,0.59
20	59.50	64.87	68.87	64.55	58.49	69.66	76.58	70.99	10- 20	18.00	23.54	2.49,2.49
30	61.49	72.25	79.76	72.38	60.62	78.45	88.88	80.01	20- 30	32.77	56.31	5.95,5.95
40	62.01	78.87	91.25	79.96	61.90	85.89	100.2	87.36	30- 40	49.07	105.4	11.1,11.1
50	60.08	82.99	101.6	85.45	61.12	90.38	110.5	91.69	40- 50	64.95	170.3	18,18
60	60.04	86.15	116.2	89.15	58.89	92.79	127.4	95.48	50- 60	79.19	249.5	26.3,26.3
70	66.91	98.05	147.9	99.53	64.63	99.86	152.0	104.7	60- 70	97.40	346.9	36.6,36.6
80	53.43	96.96	149.6	105.8	59.96	101.2	149.5	100.0	70- 80	112.1	459.1	48.5,48.5
90	42.32	85.08	129.0	90.84	41.99	86.46	131.2	89.81	80- 90	103.5	562.5	59.4,59.4
100	48.70	78.55	123.3	86.61	45.09	84.01	123.0	81.91	90-100	93.71	656.2	69.3,69.3
110	42.01	62.15	106.0	66.77	44.15	64.67	103.9	65.83	100-110	81.38	737.6	77.9,77.9
120	38.40	54.20	76.90	55.88	37.05	54.87	77.06	56.44	110-120	61.11	798.7	84.3,84.3
130	39.73	50.23	65.01	51.47	38.35	50.48	64.58	51.33	120-130	48.07	846.8	89.4,89.4
140	40.26	46.11	55.79	45.64	39.54	47.63	55.35	48.21	130-140	38.38	885.2	93.5,93.5
150	39.61	44.96	47.74	45.18	39.00	46.38	50.10	47.07	140-150	28.74	913.9	96.5,96.5
160	38.46	40.70	43.54	41.01	37.59	40.57	45.80	41.55	150-160	19.87	933.8	98.6,98.6
170	28.29	34.20	39.61	30.58	26.38	29.98	38.51	33.73	160-170	10.76	944.5	99.7,99.7
180	23.43	21.00	8.476	20.33	23.42	20.99	8.478	20.34	170-180	2.574	947.1	100,100
DEG	LUMINOUS INTENSITY:cd									UNIT:lm		

Conical surface Flux(90deg): 135.99 lm

%lum = 14.4%  
 %lamp = 14.4%

Conical surface Flux(120deg): 249.52 lm

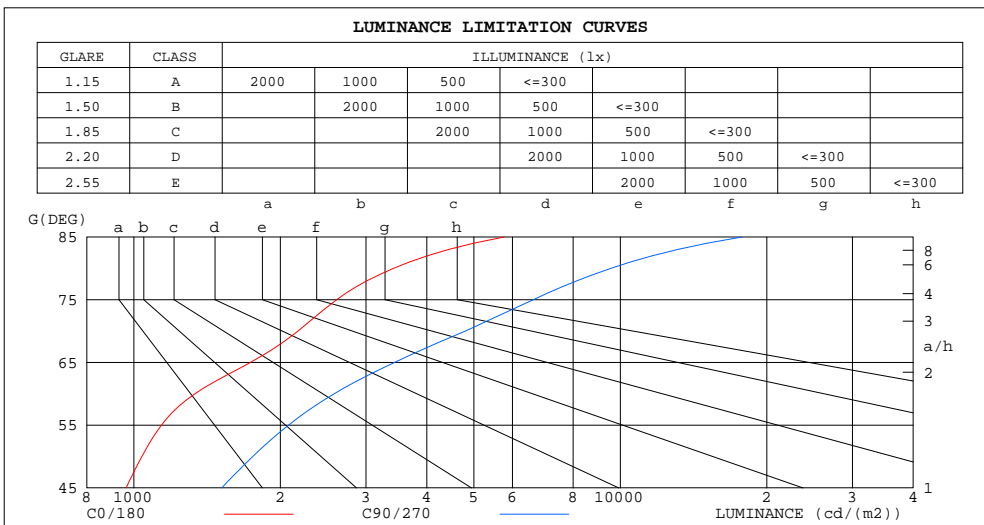
%lum = 26.3%  
 %lamp = 26.3%

C Range: 0 - 360DEG  
 C Interval: 22.5DEG  
 Test Speed: HIGH  
 Temperature:24.9DEG  
 Operators:Water  
 Test Date:2024-10-21

γ Range: 0 - 180DEG  
 γ Interval: 1.0DEG  
 Test System:EVERFINE GO-R5000\_V2 SYSTEM V2.00.446  
 Humidity:45%  
 Test Distance:2.519m [K=1.0000]  
 Remarks:

**LUMINANCE LIMITATION CURVES**

Test:U:120.09V I:0.2874A P:20.450W PF:0.5925 Freq:60.00Hz Lamp Flux:947.087x1 lm		
NAME: ASD-LWS27C-18D20SM-RGBW-BK	TYPE: N/A	WEIGHT: N/A
SPEC.: 6500K	DIM.: N/A	SERIAL No.: N/A
MFR.: ASD Lighting Corp	SUR.: N/A	Shielding Angle: N/A



LUMINANCE cd/(m2)		
G(DEG)	C0/180	C90/270
85	5774	17794
80	3419	9564
75	2611	6620
70	2174	4802
65	1736	3434
60	1334	2581
55	1140	2079
50	1039	1755
45	964	1516

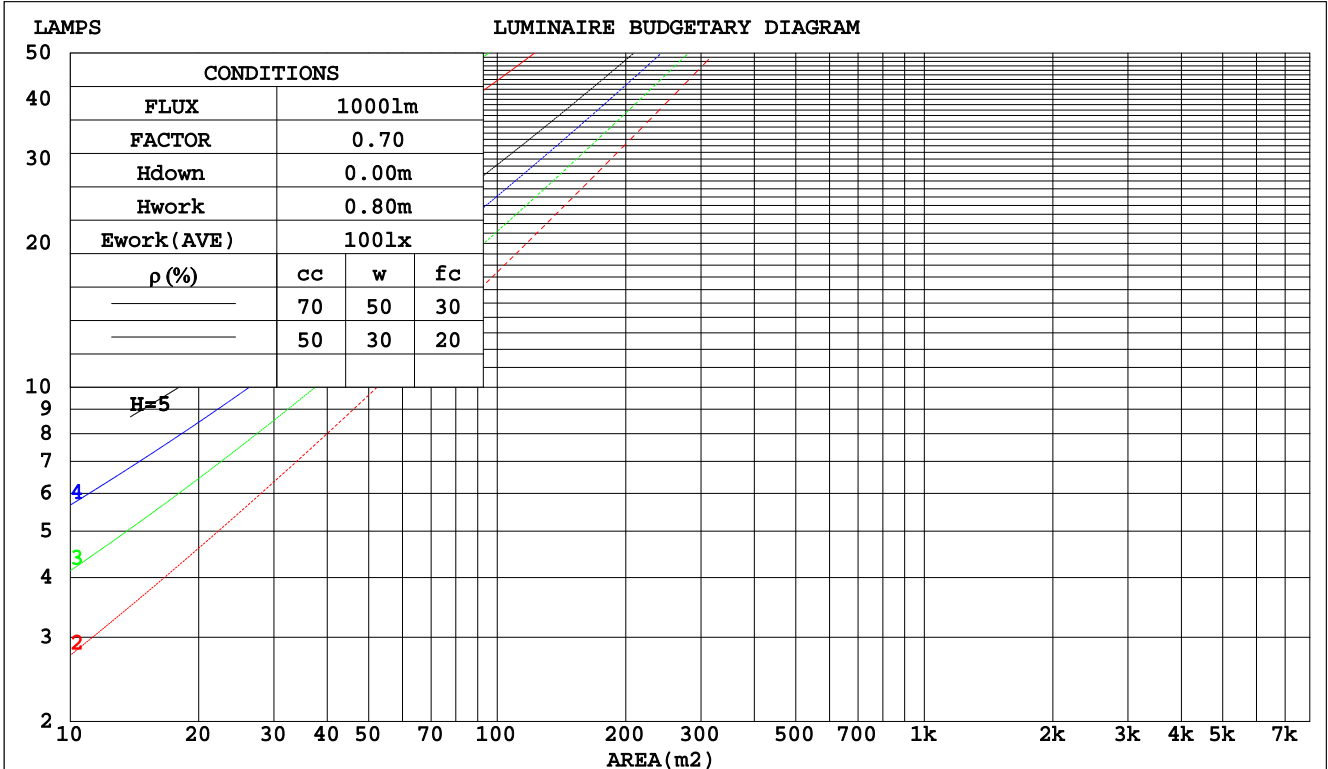
C Range: 0 - 360DEG  
 C Interval: 22.5DEG  
 Test Speed: HIGH  
 Temperature: 24.9DEG  
 Operators: Water  
 Test Date: 2024-10-21

γ Range: 0 - 180DEG  
 γ Interval: 1.0DEG  
 Test System: EVERFINE GO-R5000\_V2 SYSTEM V2.00.446  
 Humidity: 45%  
 Test Distance: 2.519m [K=1.0000]  
 Remarks:

CU AND LUMINAIRE BUDGETARY ESTIMATE DIAGRAM

Test:U:120.09V I:0.2874A P:20.450W PF:0.5925 Freq:60.00Hz Lamp Flux:947.087x1 lm		
NAME: ASD-LWS27C-18D20SM-RGBW-BK	TYPE: N/A	WEIGHT: N/A
SPEC.:6500K	DIM.: N/A	SERIAL No.: N/A
MFR.:ASD Lighting Corp	SUR.: N/A	Shielding Angle: N/A

pcc	80%			70%			50%			30%			10%			0
	50%	30%	10%	50%	30%	10%	50%	30%	10%	50%	30%	10%	50%	30%	10%	0
pw																
pfc	20%			20%			20%			20%			20%			0
RCR	RCR:Room Cavity Ratio															
	Coefficients of Utilization(CU)															
0.0	1.09	1.09	1.09	1.02	1.02	1.02	.89	.89	.89	.76	.76	.76	.65	.65	.65	.59
1.0	.87	.81	.76	.81	.76	.71	.69	.65	.61	.58	.55	.52	.48	.46	.43	.38
2.0	.73	.65	.57	.68	.60	.53	.57	.51	.46	.48	.43	.39	.39	.35	.32	.28
3.0	.62	.53	.45	.58	.49	.42	.49	.42	.36	.41	.35	.31	.33	.29	.25	.21
4.0	.54	.44	.37	.50	.41	.34	.42	.35	.29	.35	.29	.25	.28	.24	.20	.16
5.0	.48	.38	.31	.44	.35	.28	.37	.30	.24	.31	.25	.20	.25	.20	.17	.13
6.0	.42	.33	.26	.39	.30	.24	.33	.26	.21	.28	.22	.17	.22	.18	.14	.11
7.0	.38	.29	.22	.35	.27	.21	.30	.23	.18	.25	.19	.15	.20	.16	.12	.09
8.0	.34	.25	.19	.32	.24	.18	.27	.20	.15	.23	.17	.13	.18	.14	.10	.08
9.0	.31	.23	.17	.29	.21	.16	.25	.18	.14	.21	.15	.11	.17	.12	.09	.07
10.0	.28	.20	.15	.26	.19	.14	.23	.16	.12	.19	.14	.10	.16	.11	.08	.06



C Range: 0 - 360DEG  
 C Interval: 22.5DEG  
 Test Speed: HIGH  
 Temperature:24.9DEG  
 Operators:Water  
 Test Date:2024-10-21

γ Range: 0 - 180DEG  
 γ Interval: 1.0DEG  
 Test System:EVERFINE GO-R5000\_V2 SYSTEM V2.00.446  
 Humidity:45%  
 Test Distance:2.519m [K=1.0000]  
 Remarks:

WEC AND CCEC

Test:U:120.09V I:0.2874A P:20.450W PF:0.5925 Freq:60.00Hz		
Lamp Flux:947.087x1 lm		
NAME: ASD-LWS27C-18D20SM-RGBW-BK	TYPE: N/A	WEIGHT: N/A
SPEC.: 6500K	DIM.: N/A	SERIAL No.: N/A
MFR.: ASD Lighting Corp	SUR.: N/A	Shielding Angle: N/A

ρcc	80%			70%			50%			30%			10%			0
ρw	50%	30%	10%	50%	30%	10%	50%	30%	10%	50%	30%	10%	50%	30%	10%	0
ρfc	20%			20%			20%			20%			20%			0
RCR	RCR:Room Cavity Ratio						Wall Exitance Coefficients(WEC)									
0.0																
1.0	.439	.250	.079	.420	.239	.076	.383	.220	.070	.349	.201	.065	.318	.184	.059	
2.0	.364	.199	.061	.346	.191	.059	.312	.174	.054	.281	.158	.049	.253	.143	.045	
3.0	.315	.168	.050	.299	.160	.048	.268	.145	.044	.240	.131	.040	.213	.118	.037	
4.0	.279	.145	.043	.264	.138	.041	.236	.125	.037	.210	.113	.034	.185	.101	.031	
5.0	.250	.128	.037	.237	.122	.035	.211	.110	.032	.187	.099	.029	.164	.088	.026	
6.0	.227	.114	.033	.215	.108	.031	.191	.098	.028	.169	.088	.026	.148	.078	.023	
7.0	.208	.103	.029	.197	.098	.028	.175	.088	.025	.154	.079	.023	.135	.070	.021	
8.0	.192	.094	.026	.181	.089	.025	.161	.080	.023	.142	.072	.021	.124	.064	.019	
9.0	.178	.086	.024	.168	.082	.023	.149	.074	.021	.131	.066	.019	.115	.058	.017	
10.0	.166	.080	.022	.157	.076	.021	.139	.068	.019	.123	.061	.017	.107	.054	.015	

ρcc	80%			70%			50%			30%			10%			0
ρw	50%	30%	10%	50%	30%	10%	50%	30%	10%	50%	30%	10%	50%	30%	10%	0
ρfc	20%			20%			20%			20%			20%			0
RCR	RCR:Room Cavity Ratio						Ceiling Cavity Exitance Coefficients(CCEC)									
0.0	.500	.500	.500	.427	.427	.427	.292	.292	.292	.168	.168	.168	.054	.054	.054	
1.0	.501	.467	.436	.429	.401	.375	.293	.276	.260	.169	.160	.151	.054	.051	.049	
2.0	.496	.446	.403	.425	.384	.349	.291	.265	.243	.168	.154	.143	.054	.050	.046	
3.0	.489	.430	.384	.419	.371	.333	.288	.258	.233	.166	.151	.138	.053	.049	.045	
4.0	.481	.419	.371	.413	.362	.322	.284	.252	.227	.164	.148	.134	.053	.048	.044	
5.0	.474	.410	.362	.407	.354	.315	.280	.248	.223	.162	.145	.132	.052	.047	.044	
6.0	.466	.402	.356	.401	.348	.310	.276	.244	.220	.160	.143	.131	.052	.047	.043	
7.0	.459	.396	.352	.395	.343	.307	.273	.241	.217	.158	.142	.129	.051	.046	.043	
8.0	.452	.391	.348	.389	.339	.304	.269	.238	.216	.157	.140	.128	.051	.046	.043	
9.0	.446	.386	.346	.384	.335	.302	.266	.236	.214	.155	.139	.128	.050	.046	.042	
10.0	.440	.382	.344	.379	.332	.300	.263	.234	.213	.153	.138	.127	.050	.045	.042	

C Range: 0 - 360DEG  
 C Interval: 22.5DEG  
 Test Speed: HIGH  
 Temperature:24.9DEG  
 Operators:Water  
 Test Date:2024-10-21

γ Range: 0 - 180DEG  
 γ Interval: 1.0DEG  
 Test System:EVERFINE GO-R5000\_V2 SYSTEM V2.00.446  
 Humidity:45%  
 Test Distance:2.519m [K=1.0000]  
 Remarks:

UGR(Unified Glare Rating) Table

Test:U:120.09V I:0.2874A P:20.450W PF:0.5925 Freq:60.00Hz Lamp Flux:947.087x1 lm		
NAME:ASD-LWS27C-18D20SM-RGBW-BK	TYPE: N/A	WEIGHT: N/A
SPEC.: 6500K	DIM.: N/A	SERIAL No.: N/A
MFR.: ASD Lighting Corp	SUR.: N/A	Shielding Angle: N/A

ceiling/cavity	0.7	0.7	0.5	0.5	0.3	0.7	0.7	0.5	0.5	0.3
walls	0.5	0.3	0.5	0.3	0.3	0.5	0.3	0.5	0.3	0.3
working plane	0.2	0.2	0.2	0.2	0.2	0.2	0.2	0.2	0.2	0.2
Room dimensions	Viewed crosswise					Viewed endwise				
x = 2H y = 2H	10.6	11.8	11.4	12.6	13.6	13.6	14.8	14.3	15.6	16.6
3H	14.0	15.1	14.8	15.9	16.9	17.9	19.0	18.7	19.9	20.9
4H	15.6	16.6	16.4	17.5	18.5	20.3	21.3	21.1	22.1	23.2
6H	17.2	18.1	18.0	19.0	20.1	22.6	23.5	23.4	24.4	25.5
8H	18.0	18.9	18.8	19.8	20.9	23.7	24.7	24.6	25.5	26.6
12H	18.8	19.7	19.6	20.6	21.7	25.0	25.9	25.8	26.8	27.9
4H 2H	12.4	13.4	13.2	14.3	15.3	14.3	15.3	15.1	16.2	17.2
3H	15.7	16.6	16.5	17.5	18.6	18.8	19.7	19.6	20.6	21.7
4H	17.3	18.2	18.2	19.1	20.2	21.3	22.1	22.1	23.0	24.1
6H	19.0	19.7	19.9	20.6	21.8	23.8	24.5	24.7	25.4	26.6
8H	19.8	20.5	20.7	21.4	22.6	25.0	25.8	25.9	26.7	27.8
12H	20.7	21.4	21.6	22.3	23.5	26.4	27.1	27.3	28.0	29.2
8H 4H	18.7	19.4	19.6	20.3	21.5	21.7	22.4	22.6	23.3	24.5
6H	20.6	21.2	21.5	22.1	23.3	24.4	25.0	25.3	26.0	27.2
8H	21.5	22.1	22.4	23.0	24.2	25.9	26.5	26.8	27.4	28.6
12H	22.5	23.0	23.5	24.0	25.2	27.6	28.0	28.5	29.0	30.2
12H 4H	19.2	19.9	20.1	20.8	22.0	21.7	22.4	22.6	23.3	24.5
6H	21.2	21.7	22.1	22.7	23.9	24.5	25.1	25.5	26.0	27.3
8H	22.3	22.8	23.2	23.7	24.9	26.1	26.6	27.1	27.6	28.8
Variations with the observer position at spacings(CIE Pub.117):										
S = 1.0H	+ 0.1 / - 0.1					+ 0.1 / - 0.1				
1.5H	+ 0.2 / - 0.2					+ 0.2 / - 0.2				
2.0H	+ 0.3 / - 0.4					+ 0.3 / - 0.3				

CIE Pub.117, 947.1 lm Total Lamp Luminous Flux Correct (8log(F/F0) = -0.2)  
Area: 0.09003 m2

C Range: 0 - 360DEG  
C Interval: 22.5DEG  
Test Speed: HIGH  
Temperature:24.9DEG  
Operators:Water  
Test Date:2024-10-21

γ Range: 0 - 180DEG  
γ Interval: 1.0DEG  
Test System:EVERFINE GO-R5000\_V2 SYSTEM V2.00.446  
Humidity:45%  
Test Distance:2.519m [K=1.0000]  
Remarks:

UTILIZATION FACTORS TABLE

Test:U:120.09V I:0.2874A P:20.450W PF:0.5925 Freq:60.00Hz Lamp Flux:947.087x1 lm		
NAME: ASD-LWS27C-18D20SM-RGBW-BK	TYPE: N/A	WEIGHT: N/A
SPEC.: 6500K	DIM.: N/A	SERIAL No.: N/A
MFR.: ASD Lighting Corp	SUR.: N/A	Shielding Angle: N/A

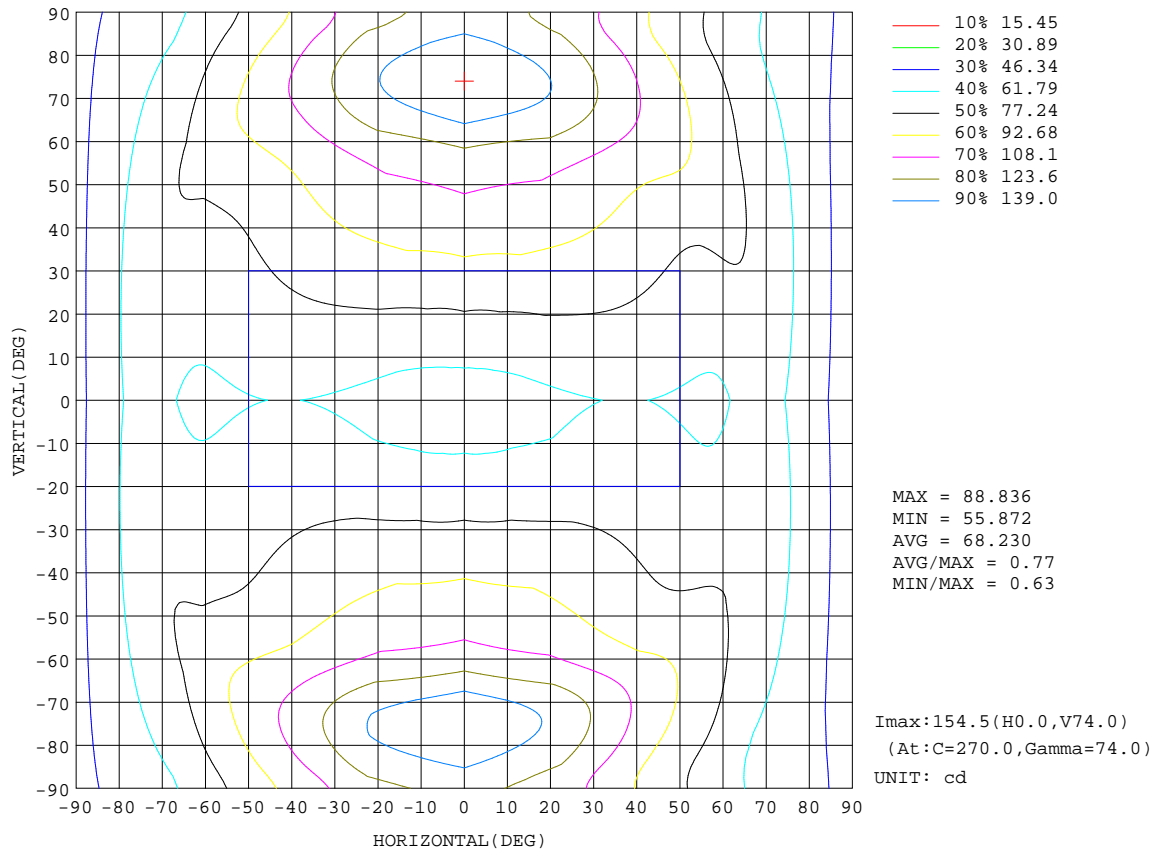
REFLECTANCE										
Ceiling	0.8	0.8	0.8	0.7	0.7	0.7	0.5	0.5	0.5	0
Walls	0.7	0.5	0.3	0.7	0.5	0.3	0.7	0.5	0.3	0
Working plane	0.2	0.2	0.2	0.2	0.2	0.2	0.2	0.2	0.2	0
ROOM INDEX	UTILIZATION FACTORS(PERCENT) $k(RI) \times RCR = 5$									
k = 0.60	37	24	17	35	23	16	32	22	15	8
0.80	46	31	23	43	30	22	39	28	20	11
1.00	53	38	29	50	36	28	44	35	25	14
1.25	59	45	35	56	43	34	49	38	31	18
1.50	65	50	40	61	48	39	53	43	35	21
2.00	73	59	49	68	56	47	59	50	42	26
2.50	78	65	56	73	61	53	63	54	47	29
3.00	82	70	61	76	66	58	66	58	51	32
4.00	87	77	69	81	73	65	70	64	58	36
5.00	91	82	75	85	77	70	73	67	62	39
ROOM INDEX	UF(total)									Direct
According to DIN EN 13032-2 2004			Suspended				SHRNOM = 1.25			

C Range: 0 - 360DEG  
 C Interval: 22.5DEG  
 Test Speed: HIGH  
 Temperature:24.9DEG  
 Operators:Water  
 Test Date:2024-10-21

$\gamma$  Range: 0 - 180DEG  
 $\gamma$  Interval: 1.0DEG  
 Test System:EVERFINE GO-R5000\_V2 SYSTEM V2.00.446  
 Humidity:45%  
 Test Distance:2.519m [K=1.0000]  
 Remarks:

**ISOCANDELA DIAGRAM**

Test:U:120.09V I:0.2874A P:20.450W PF:0.5925 Freq:60.00Hz Lamp Flux:947.087x1 lm		
NAME: ASD-LWS27C-18D20SM-RGBW-BK	TYPE: N/A	WEIGHT: N/A
SPEC.: 6500K	DIM.: N/A	SERIAL No.: N/A
MFR.:ASD Lighting Corp	SUR.: N/A	Shielding Angle: N/A



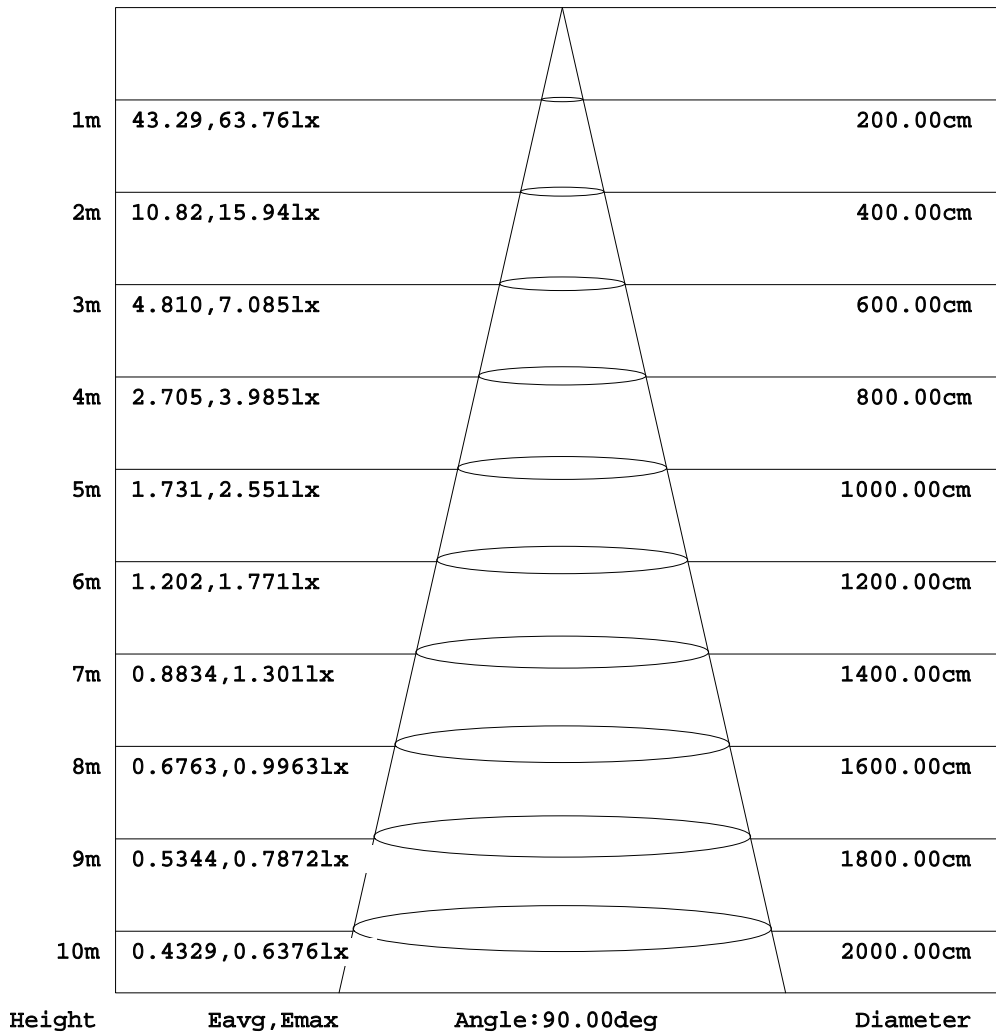
C Range: 0 - 360DEG  
 C Interval: 22.5DEG  
 Test Speed: HIGH  
 Temperature:24.9DEG  
 Operators:Water  
 Test Date:2024-10-21

γ Range: 0 - 180DEG  
 γ Interval: 1.0DEG  
 Test System:EVERFINE GO-R5000\_V2 SYSTEM V2.00.446  
 Humidity:45%  
 Test Distance:2.519m [K=1.0000]  
 Remarks:

**AAI Figure**

Test:U:120.09V I:0.2874A P:20.450W PF:0.5925 Freq:60.00Hz Lamp Flux:947.087x1 lm		
NAME: ASD-LWS27C-18D20SM-RGBW-BK	TYPE: N/A	WEIGHT: N/A
SPEC.:6500K	DIM.: N/A	SERIAL No.: N/A
MFR.: ASD Lighting Corp	SUR.: N/A	Shielding Angle: N/A

Flux out:136.0 lm



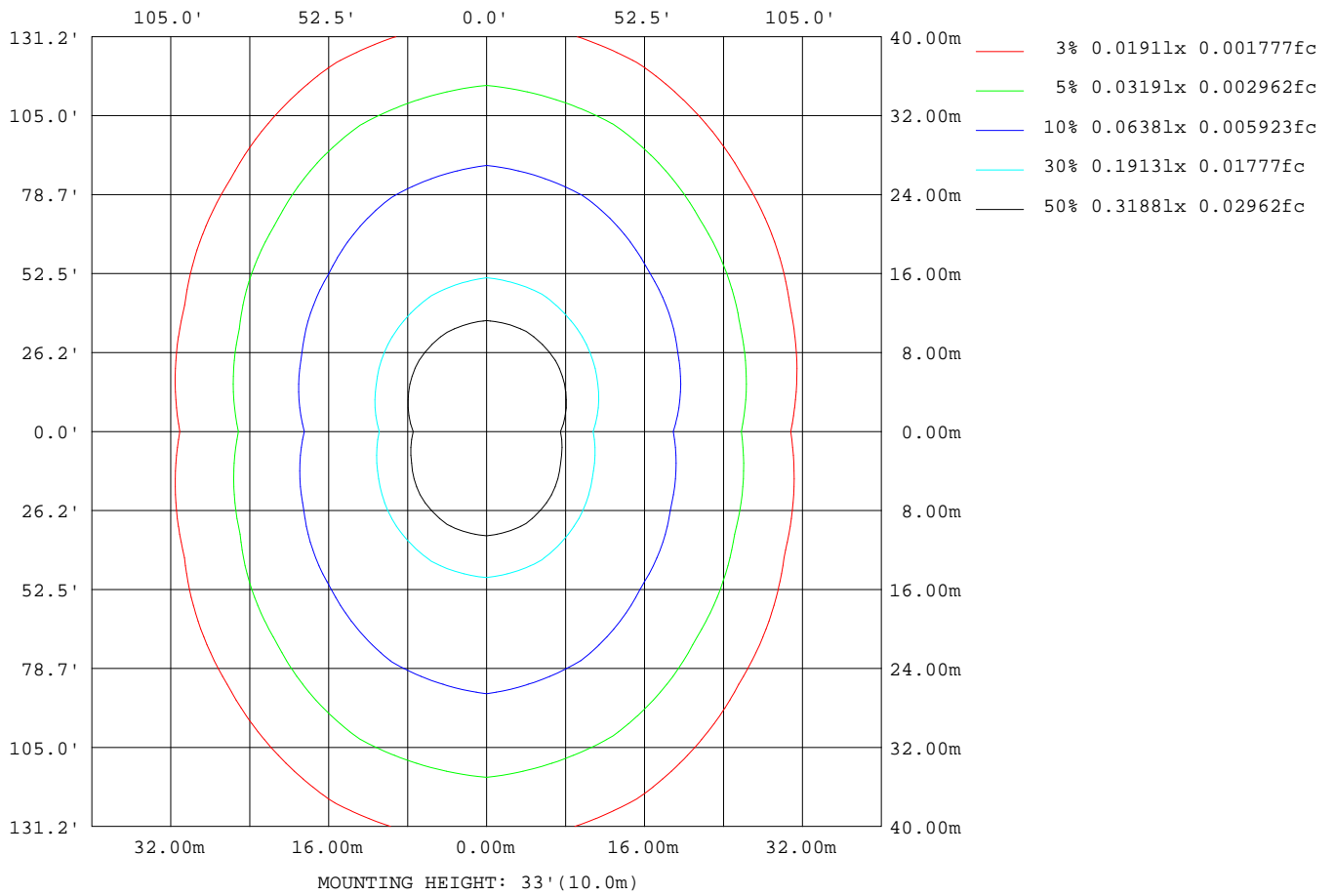
Note:The Curves indicate the illuminated area and the average illumination when the luminaire is at different distance.

C Range: 0 - 360DEG  
C Interval: 22.5DEG  
Test Speed: HIGH  
Temperature:24.9DEG  
Operators:Water  
Test Date:2024-10-21

γ Range: 0 - 180DEG  
γ Interval: 1.0DEG  
Test System:EVERFINE GO-R5000\_V2 SYSTEM V2.00.446  
Humidity:45%  
Test Distance:2.519m [K=1.0000]  
Remarks:

**ISOLUX DIAGRAM**

Test:U:120.09V I:0.2874A P:20.450W PF:0.5925 Freq:60.00Hz Lamp Flux:947.087x1 lm		
NAME: ASD-LWS27C-18D20SM-RGBW-BK	TYPE: N/A	WEIGHT: N/A
SPEC.: 6500K	DIM.: N/A	SERIAL No.: N/A
MFR.:ASD Lighting Corp	SUR.: N/A	Shielding Angle: N/A



C Range: 0 - 360DEG  
 C Interval: 22.5DEG  
 Test Speed: HIGH  
 Temperature:24.9DEG  
 Operators:Water  
 Test Date:2024-10-21

γ Range: 0 - 180DEG  
 γ Interval: 1.0DEG  
 Test System:EVERFINE GO-R5000\_V2 SYSTEM V2.00.446  
 Humidity:45%  
 Test Distance:2.519m [K=1.0000]  
 Remarks:

LED Avg.L Report

Test:U:120.09V I:0.2874A P:20.450W PF:0.5925 Freq:60.00Hz Lamp Flux:947.087x1 lm		
NAME: ASD-LWS27C-18D20SM-RGBW-BK	TYPE: N/A	WEIGHT: N/A
SPEC.:6500K	DIM.: N/A	SERIAL No.: N/A
MFR.:ASD Lighting Corp	SUR.: N/A	Shielding Angle: N/A

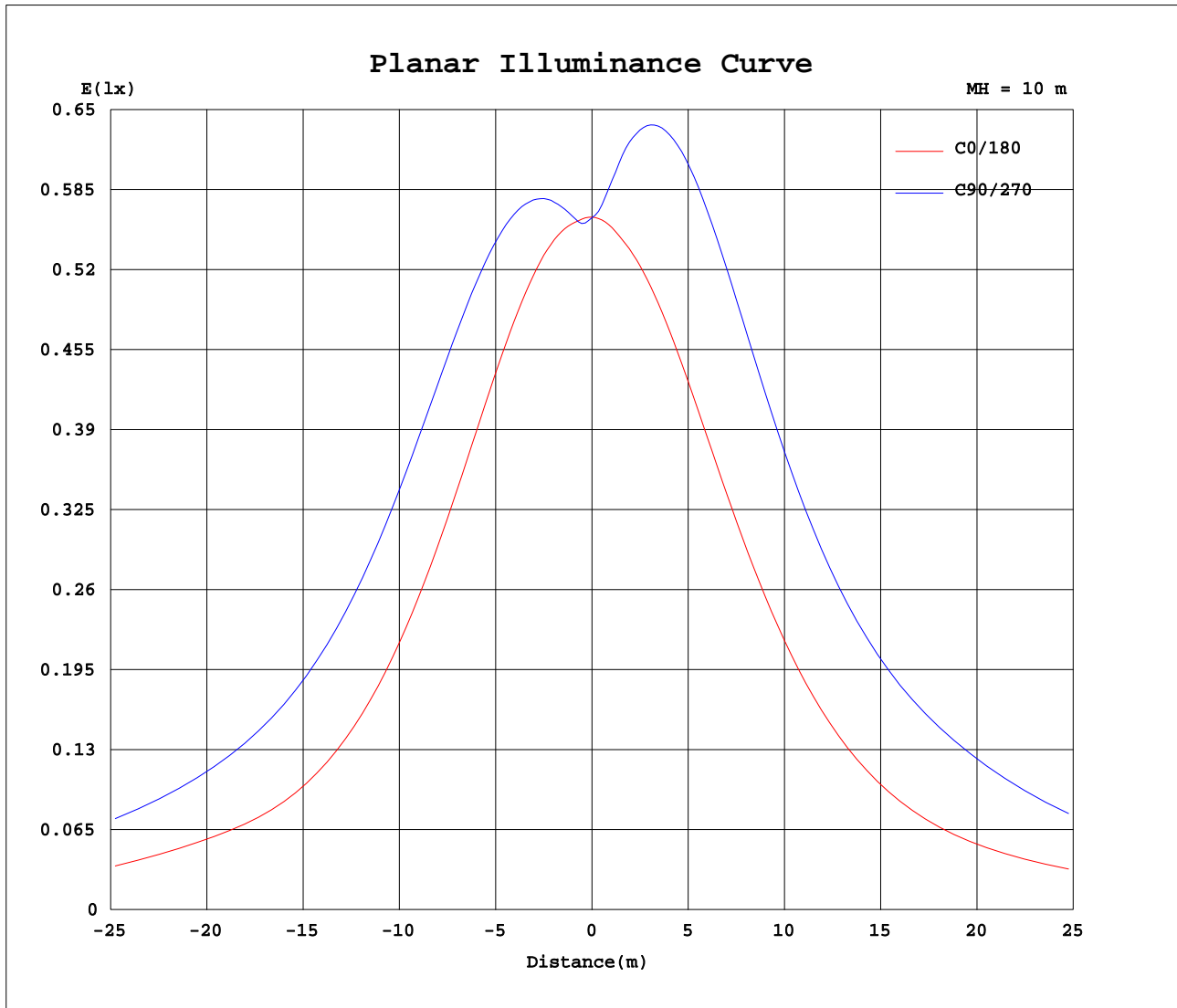
AvgL	cd/m2
L_0~180(65)av	1661
L_0~180(75)av	2744
L_0~180(85)av	6150
L_90~270(65)av	3578
L_90~270(75)av	6626
L_90~270(85)av	17758
L_45(65)av	2490
L_45(75)av	4458
L_45(85)av	11935

Standard: GB/T 29293-2012

C Range: 0 - 360DEG  
 C Interval: 22.5DEG  
 Test Speed: HIGH  
 Temperature:24.9DEG  
 Operators:Water  
 Test Date:2024-10-21

γ Range: 0 - 180DEG  
 γ Interval: 1.0DEG  
 Test System:EVERFINE GO-R5000\_V2 SYSTEM V2.00.446  
 Humidity:45%  
 Test Distance:2.519m [K=1.0000]  
 Remarks:

Planar Illuminance Curve



C Range: 0 - 360DEG  
 C Interval: 22.5DEG  
 Test Speed: HIGH  
 Temperature: 24.9DEG  
 Operators: Water  
 Test Date: 2024-10-21

$\gamma$  Range: 0 - 180DEG  
 $\gamma$  Interval: 1.0DEG  
 Test System: EVERFINE GO-R5000\_V2 SYSTEM V2.00.446  
 Humidity: 45%  
 Test Distance: 2.519m [K=1.0000]  
 Remarks:

LUMINOUS DISTRIBUTION INTENSITY DATA

Test:U:120.09V I:0.2874A P:20.450W PF:0.5925 Freq:60.00Hz Lamp Flux:947.087x1 lm		
NAME: ASD-LWS27C-18D20SM-RGBW-BK	TYPE: N/A	WEIGHT: N/A
SPEC.: 6500K	DIM.: N/A	SERIAL No.: N/A
MFR.: ASD Lighting Corp	SUR.: N/A	Shielding Angle: N/A

Table--1

UNIT: cd

C(DEG) γ (DEG)	0	22.5	45	67.5	90	112.5	135	157.5	180	202.5	225	247.5	270	292.5	315	337.5			
0	56.2	56.2	56.2	56.2	56.2	56.2	56.2	56.2	56.2	56.2	56.2	56.2	56.2	56.2	56.2	56.2			
5	56.5	56.1	56.2	56.5	56.8	56.5	56.1	56.0	56.3	56.8	58.0	59.0	59.3	59.1	58.2	57.1			
10	57.3	57.0	58.4	59.4	60.0	59.4	58.1	56.5	56.6	58.4	61.3	63.7	64.8	63.9	62.0	59.4			
15	58.4	58.8	61.4	63.2	64.1	63.1	61.0	58.3	57.4	60.8	65.3	68.8	70.5	69.2	66.4	62.1			
20	59.5	60.9	64.9	67.6	68.9	67.4	64.6	60.5	58.5	63.5	69.7	74.2	76.6	74.9	71.0	65.0			
25	60.6	63.0	68.5	72.5	74.1	72.2	68.4	62.8	59.6	66.1	74.1	79.9	82.8	80.7	75.6	67.9			
30	61.5	65.1	72.2	77.6	79.8	77.5	72.4	65.2	60.6	68.7	78.4	85.5	88.9	86.4	80.0	70.5			
35	62.0	66.9	75.8	82.7	85.6	82.8	76.3	67.5	61.4	71.0	82.4	90.9	94.8	91.8	84.0	72.8			
40	62.0	68.2	78.9	87.6	91.2	88.0	80.0	69.3	61.9	72.8	85.9	95.8	100	96.7	87.4	74.4			
45	61.3	68.8	81.3	92.1	96.5	92.9	83.1	70.7	61.8	73.9	88.6	100	105	101	89.9	75.1			
50	60.1	68.7	83.0	96.0	102	97.2	85.5	71.3	61.1	74.1	90.4	104	110	105	91.7	75.2			
55	58.8	68.3	84.2	100	107	102	87.3	71.3	59.9	73.7	91.6	108	117	110	93.2	74.8			
60	60.0	69.2	86.1	106	116	108	89.1	71.1	58.9	73.0	92.8	115	127	118	95.5	75.6			
65	66.0	74.4	90.9	117	131	118	92.8	72.6	60.4	73.9	95.4	125	142	128	100	80.4			
70	66.9	77.5	98.1	130	148	132	99.5	76.5	64.6	77.0	99.9	134	152	136	105	82.3			
75	60.8	74.4	101	136	154	140	106	80.1	67.1	79.3	104	137	154	138	105	78.3			
80	53.4	68.8	97.0	132	150	138	106	76.0	60.0	73.7	101	134	150	133	100	72.3			
85	45.3	61.8	89.3	124	140	129	99.0	68.4	51.2	65.9	93.7	126	139	124	92.6	65.1			
90	42.3	58.9	85.1	116	129	119	90.8	60.3	42.0	58.0	86.5	118	131	120	89.8	63.1			
95	46.2	60.6	85.9	113	119	118	90.2	60.0	41.4	58.0	86.4	119	122	114	90.7	65.0			
100	48.7	59.5	78.6	99.3	123	99.2	86.6	61.1	45.1	59.4	84.0	97.7	123	102	81.9	63.2			
105	47.6	54.3	69.8	97.9	118	101	74.8	57.6	46.1	56.4	72.8	96.6	117	100	72.7	56.6			
110	42.0	46.7	62.1	87.6	106	92.3	66.8	50.8	44.2	50.5	64.7	88.0	104	89.7	65.8	48.9			
115	38.9	42.5	57.0	75.6	88.4	78.4	59.6	44.8	38.4	43.7	58.2	76.6	88.4	77.9	60.1	44.7			
120	38.4	41.0	54.2	68.1	76.9	69.6	55.9	42.3	37.1	41.5	54.9	68.9	77.1	69.7	56.4	43.0			
125	39.2	42.3	52.3	63.3	70.0	64.3	53.6	41.3	37.5	42.9	52.6	63.6	69.9	64.3	53.8	44.1			
130	39.7	43.0	50.2	59.8	65.0	60.5	51.5	42.4	38.3	43.6	50.5	59.5	64.6	60.3	51.3	44.8			
135	40.2	42.9	47.5	56.4	60.3	57.1	48.4	42.6	39.1	43.5	48.1	56.0	59.8	56.5	48.7	44.7			
140	40.3	42.1	46.1	52.4	55.8	53.1	45.6	41.7	39.5	42.5	47.6	52.4	55.3	52.6	48.2	43.7			
145	39.9	40.4	46.2	48.0	50.6	48.5	45.7	40.7	39.5	40.9	47.4	49.7	50.9	49.7	48.4	41.7			
150	39.6	39.7	45.0	47.0	47.7	47.0	45.2	39.1	39.0	39.2	46.4	49.2	50.1	49.1	47.1	40.3			
155	39.4	39.3	42.4	45.4	46.7	45.7	42.8	37.9	38.4	37.7	44.1	47.3	48.7	47.1	44.7	39.4			
160	38.5	37.9	40.7	42.2	43.5	42.8	41.0	37.0	37.6	36.8	40.6	44.6	45.8	44.2	41.6	37.9			
165	34.2	35.9	38.3	40.8	41.4	40.9	37.1	33.8	34.1	34.0	38.3	40.5	42.4	41.4	38.9	35.0			
170	28.3	32.4	34.2	37.2	39.6	33.7	30.6	27.4	26.4	27.4	30.0	33.7	38.5	36.7	33.7	31.6			
175	21.7	22.3	29.0	28.6	25.8	25.0	19.9	19.0	19.4	19.7	20.5	25.3	26.8	27.8	28.8	22.6			
180	23.4	22.7	21.0	17.4	8.48	16.4	20.3	22.5	23.4	22.7	21.0	17.4	8.48	16.4	20.3	22.5			

C Range: 0 - 360DEG  
 C Interval: 22.5DEG  
 Test Speed: HIGH  
 Temperature:24.9DEG  
 Operators:Water  
 Test Date:2024-10-21

γ Range: 0 - 180DEG  
 γ Interval: 1.0DEG  
 Test System:EVERFINE GO-R5000\_V2 SYSTEM V2.00.446  
 Humidity:45%  
 Test Distance:2.519m [K=1.0000]  
 Remarks: