



LED WAFER FIRE RATED ROUND

JFR series

► **DESIGN** - LED WAFER FIRE RATED ROUND features a reinforced, heat-resistant steel body with a 2-hour fire resistance rating. It includes a J-box, plug-and-twist connector, and spring-loaded clips for quick, hassle-free installation. Heavy-duty, commercial-grade spring clips accommodate ceilings up to 1-3/4" thick. An acrylic lens with a 110° beam angle and CRI90+ ensures even, high-quality light with smooth dimming capabilities.

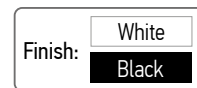
► **VARIETY** - This fixture is available in a round shape with 4inch and 6inch sizes, offering 120V or 120-277V options. It features a baffle trim and comes in a White or Black finish.

► **COLOR SELECTABLE** - You can choose either a 2700K soft white, 3000K warm white, 3500K neutral white, 4000K cool white, or 5000K daylight color temperature.

► **INSTALLATION** - This Air Tight, IC-rated fixture requires no can or additional housing. When installed in ceilings compliant with fire-rated building codes, no extra accessories are needed. It is also Wet location rated, making it versatile for various applications.

► **ADVANTAGES** - With a lifespan of 50,000 hours, these fixtures are made to last decades under normal operation! ASD provides a 5-year limited warranty along with ETL certification to guarantee top quality products and safety!

Additionally, our fire rated fixtures are tested to comply with UL 263, ASTM E119, and CAN ULC S101.



PRODUCT PRESENTATION:

Model	Size	Power	Voltage	Dimming	Lumens	CCT		Finish	Trim	Dimensions	Certification
JFR											
ASD-JFR-4D12AC-WH	4 inch	12 W	120V	Triac	1,002lm	2,700/3,000/3,500/4,000/5,000 K		White	-	4-15/16" x 4-15/16" x 2-1/4"	ETL(5029309),ES,T24, JA8
ASD-JFR-6D15AC-WH	6 inch	15 W	120V	Triac	1,380lm	2,700/3,000/3,500/4,000/5,000 K		White	-	6-7/8" x 6-7/8" x 2-1/4"	ETL(5029309),ES,T24, JA8
ASD-JFR-8D20AC-WH	8 inch	20 W	120V	Triac	1,784lm	2,700/3,000/3,500/4,000/5,000 K		White	-	8-13/16" x 8-13/16" x 2-5/16"	ETL(5029309),ES,T24, JA8
JFRB-MV											
ASD-JFRB-MV-4D12BK	4 inch	12 W	120-277V	0-10V	930lm	2,700/3,000/3,500/4,000/5,000 K		Black	Baffle trim	4-15/16" x 4-15/16" x 2-3/8"	ETL(5029309),ES,T24, JA8
ASD-JFRB-MV-4D12WH	4 inch	12 W	120-277V	0-10V	930lm	2,700/3,000/3,500/4,000/5,000 K		White	Baffle trim	4-15/16" x 4-15/16" x 2-3/8"	ETL(5029309),ES,T24, JA8
ASD-JFRB-MV-6D15BK	6 inch	15 W	120-277V	0-10V	1,380lm	2,700/3,000/3,500/4,000/5,000 K		Black	Baffle trim	6-7/8" x 6-7/8" x 2-5/16"	ETL(5029309),ES,T24, JA8
ASD-JFRB-MV-6D15WH	6 inch	15 W	120-277V	0-10V	1,380lm	2,700/3,000/3,500/4,000/5,000 K		White	Baffle trim	6-7/8" x 6-7/8" x 2-5/16"	ETL(5029309),ES,T24, JA8

For detailed luminous flux information please refer to Annex 1, page 2.

TECHNICAL PARAMETERS:

Model	Max input current	Inrush current	Work environment	Operating temperature	Power factor	Beam Angle	Surge protection	Housing		Lens	CRI
								Front	Back		
JFR											
ASD-JFR-4D12AC-WH	0.1A	0.98A	Wet location	-4°F to 113°F(-20°C to 45°C)	>0.9	112°	2kV	Aluminum	Iron	PS	>90
ASD-JFR-6D15AC-WH	0.12A	0.92A	Wet location	-4°F to 113°F(-20°C to 45°C)	>0.9	112°	2kV	Aluminum	Iron	PS	>90
ASD-JFR-8D20AC-WH	0.17A	1A	Wet location	-4°F to 113°F(-20°C to 45°C)	>0.9	112°	2kV	Aluminum	Iron	PS	>90
JFRB-MV											
ASD-JFRB-MV-4D12BK	0.1A	2.66A	Wet location	-4°F to 113°F(-20°C to 45°C)	>0.9	112°	2kV	Aluminum	Iron	PS	>90
ASD-JFRB-MV-4D12WH	0.1A	2.66A	Wet location	-4°F to 113°F(-20°C to 45°C)	>0.9	112°	2kV	Aluminum	Iron	PS	>90
ASD-JFRB-MV-6D15BK	0.12A	5.44A	Wet location	-4°F to 113°F(-20°C to 45°C)	>0.9	112°	2kV	Aluminum	Iron	PS	>90
ASD-JFRB-MV-6D15WH	0.12A	5.44A	Wet location	-4°F to 113°F(-20°C to 45°C)	>0.9	112°	2kV	Aluminum	Iron	PS	>90

For most up-to-date spec sheets please refer to asd-lighting.com



LED WAFER FIRE RATED ROUND

JFR series

DIMMING COMPATIBLE CONTROLS:

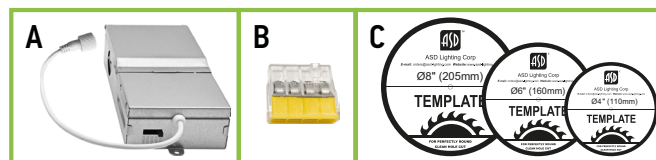
Dimming compatible controls					
Brand	Lutron		Leviton		Cooper
Models	DMD-LE3-D	SFTU-5A3P	IPL06-10Z	6672	SI06P
	CTCL-153P	PD-6WCL	DSL06	6621	
	DVCL-153P	DV-600P			

ANNEX 1



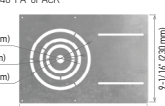
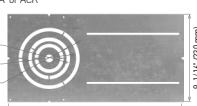
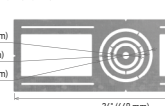
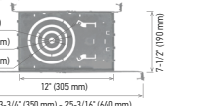
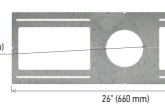

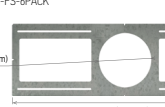
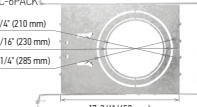

Model	Power	2,700 K	3,000 K	3,500 K	4,000 K	5,000 K
ASD-JFR-4D12AC-WH	12 W	940 lm	983 lm	1,000 lm	1,002 lm	984 lm
ASD-JFR-6D15AC-WH	15 W	1,186 lm	1,285 lm	1,360 lm	1,380 lm	1,336 lm
ASD-JFR-8D20AC-WH	20 W	1,521 lm	1,692 lm	1,784 lm	1,782 lm	1,620 lm
ASD-JFRB-MV-4D12BK	12 W	807 lm	847 lm	891 lm	893 lm	930 lm
ASD-JFRB-MV-4D12WH						
ASD-JFRB-MV-6D15BK	15 W	1,186 lm	1,285 lm	1,360 lm	1,380 lm	1,336 lm
ASD-JFRB-MV-6D15WH	15 W	1,186 lm	1,285 lm	1,360 lm	1,380 lm	1,336 lm

PACKAGE CONTENTS:

Description	Quantity
Fire rated LED Round Recessed Mini Panel	1
J-Box driver (A)	1
Connector (B)	3 for JFR; 5 for JFRB
Template for 4, 6 or 8 inch (C)	1
Box	1



ACCESSORIES (sold separately):

Battery back-up kit 8W BLD-HM08D 15W BLD-HM15D 	Plug-in Battery back-up kit 3.5W ASD-EMK-JBR 
New construction flat mounting plate with asymmetric round holes 3-4-6" ASD-MPLR-346-FA-6PACK 	New construction flat mounting plate 18" with asymmetric round holes 3-4-6" ASD-MPLR18-346-FA-6PACK 
New construction flat mounting plate with symmetric round holes 3-4-6" ASD-MPLR-346-FS-6PACK 	New construction mounting plate with round holes and sliding clips 3-4-6" ASD-MPLR-346-SC-6PACK 
New construction flat mounting plate with symmetric round holes 4" ASD-MPLR-4-FS-6PACK 	New construction flat mounting plate with symmetric round holes 8-10-12" ASD-MPLR-81012-FS-6PACK 
New construction flat mounting plate with symmetric round holes 6" ASD-MPLR-6-FS-6PACK 	New construction mounting plate with round holes and sliding clips 8-10-12" ASD-MPLR-81012-SC-6PACK 
Extension cord 3PIN 10" ASD-EC-10A-6PACK 20" ASD-EC-20A-6PACK 	

ACCESSORY COMPATIBILITY LIST:

Accessories	Models						
	ASD-JFR-4D12AC-WH	ASD-JFR-6D15AC-WH	ASD-JFR-8D20AC-WH	ASD-JFRB-MV-4D12WH	ASD-JFRB-MV-4D12BK	ASD-JFRB-MV-6D15WH	ASD-JFRB-MV-6D15BK
Battery back-up kit 8W BLD-HM08D				•	•	•	•
Battery back-up kit 15W BLD-HM15D	•	•	•	•	•	•	•
Plug-in battery back-up kit 3.5W ASD-EMK-JBR	•	•	•	•	•	•	•
New construction flat mounting plate with asymmetric round holes 3-4-6" ASD-MPLR-346-FA-6PACK	•	•	•	•	•	•	•
New construction flat mounting plate 18" with asymmetric round holes 3-4-6" ASD-MPLR18-346-FA-6PACK	•	•	•	•	•	•	•
New construction flat mounting plate with symmetric round holes 3-4-6" ASD-MPLR-346-FS-6PACK	•	•	•	•	•	•	•
New construction flat mounting plate with symmetric round holes 4" ASD-MPLR-4-FS-6PACK	•	•	•	•	•	•	•
New construction flat mounting plate with symmetric round holes 6" ASD-MPLR-6-FS-6PACK	•	•	•	•	•	•	•
New construction flat mounting plate with symmetric round holes 8-10-12" ASD-MPLR-81012-FS-6PACK	•	•	•	•	•	•	•
New construction mounting plate with round holes and sliding clips 3-4-6" ASD-MPLR-346-SC-6PACK	•	•	•	•	•	•	•
New construction mounting plate with round holes and sliding clips 8-10-12" ASD-MPLR-81012-SC-6PACK	•	•	•	•	•	•	•
Extension cord 3PIN ASD-EC-10A-6PACK ASD-EC-20A-6PACK	•	•	•	•	•	•	•

For most up-to-date spec sheets please refer to asd-lighting.com



LED WAFER FIRE RATED ROUND

JFR series

PLUG-IN BATTERY BACK-UP KIT INFORMATION




ASD-EMK-JBR sold separately:

Size and power	Series	Cable	mA
4inch 12 W	JFR, JBRB	FT6	280
6inch 15 W	JFR, JBRB		240

Color temperature (CCT) selection and output current must be chosen according to the fixture type and the table supplied with the product.

USAGE / OPERATION

Important: Please charge the battery for more than 24 hours on first use to activate all battery cells and ensure normal charge/discharge duration.

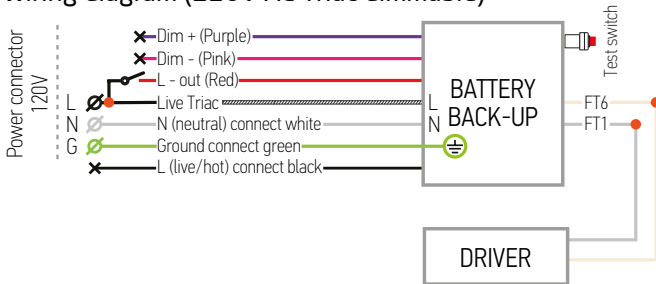
Button	Remarks
 ON	Charging
 OFF	Discharging
 OFF	Fault

- Charging (AC power ON): Red indicator ON.
- Discharging / Emergency Mode (AC power OFF): Red indicator OFF.
- Emergency power failure: fixture does not operate when emergency supply fails.

SWITCH TEST PROCEDURE:

1. When the main power supply is connected and the unit is in normal mode, press the test button to switch to emergency mode.
2. If the test button is not pressed, the unit remains in charging mode.
3. In emergency mode, press and hold the test button for 3 seconds to exit emergency mode. **Battery maintenance:** charge-discharge at least once every three months to maintain battery life. Do not leave the battery idle or continuously charging for more than 6 months.

Wiring diagram (120V AC Triac dimmable)



INSTALLATION PLUG-IN BATTERY BACK-UP KIT

ASD-EMK-JBR sold separately:

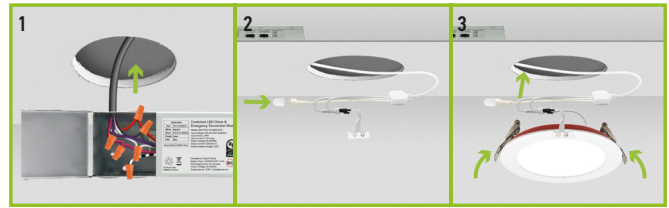
1. Turn off power before installation and remove any existing fixtures. Open the emergency power supply cover, remove the required knockout on the side panel, install a suitable cable clamp (not included), feed the power cable through it, and connect the wires.

For 0-10V dimming: red to red, black to black, white to white, purple to purple, pink to pink. Cap the remaining wire.

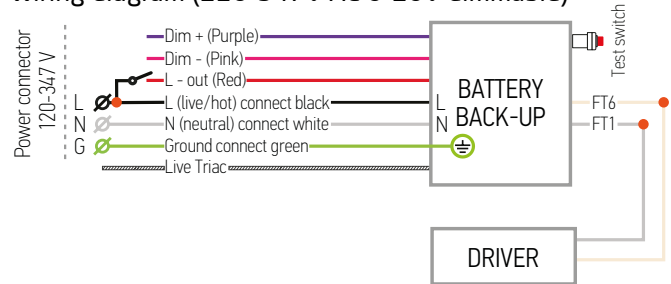
For Triac dimming: red to red, white to white, black & white to black & white. Cap the remaining wires.

2. Insert the emergency power supply into the mounting hole and secure it. The hole must be larger than 3-1/8 inches or the unit will not fit. Connect the fixture power cable to the emergency power supply.

3. Remove the adhesive backing from the indicator light and attach it to the fixture surface. Push the spring clips in to the mounting hole and insert the fixture; it will sit flush with the ceiling. Restore power and press the test switch to verify operation.



Wiring diagram (120-347V AC 0-10V dimmable)



For most up-to-date spec sheets please refer to asd-lighting.com



LED WAFER FIRE RATED ROUND

JFR series

BATTERY BACK-UP KIT INFORMATION

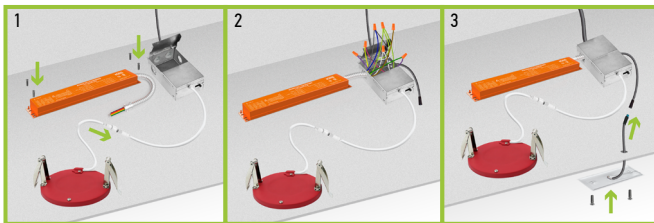
BLD-HM08D | **BLD-HM15D** sold separately:

Specifications	model: BLD-HM08D	model: BLD-HM15D
Input voltage	120-347 Vac, 50/60 Hz	120-347 Vac, 50/60 Hz
Input current	≤ 100 mA	≤ 100 mA
Output voltage	≤ 170 Vdc	≤ 175 Vdc
Output power	8W	15W
Application	< 60W (0-10 V dimmable fixture)	< 100W (0/1-10 V dimmable fixture)
Ambient temperature	32°F to 122°F (0°C to 50°C)	
Lumens in emergency mode	for 4" model	656 lm
	for 6" model	624 lm
		935 lm
		1,214 lm

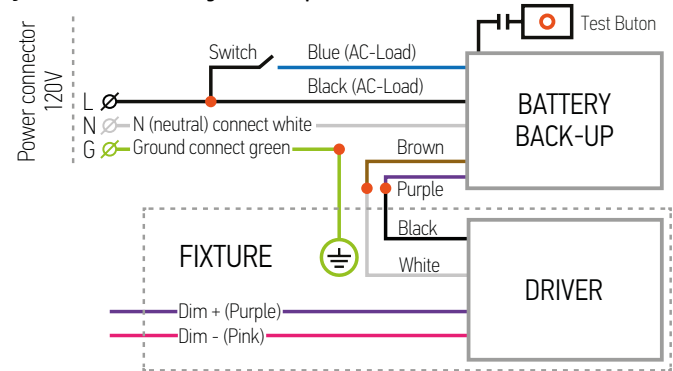
INSTALLATION BATTERY BACK-UP KIT

BLD-HM08D | **BLD-HM15D** sold separately:

1. Secure the battery back-up to the ceiling.
2. Connect wires as shown on electrical diagram.
3. Connect test switch and secure it in the hole on surface.



JFRB with battery back-up



INSTALLATION GUIDE

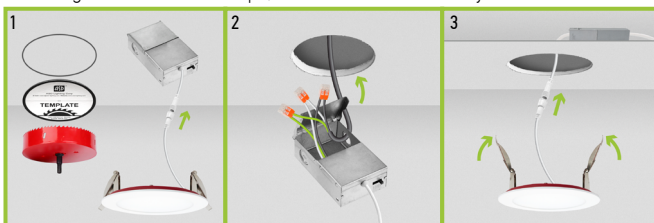
IMPORTANT SAFETY INFORMATION:

Please read all the instructions below before installation!

- ▶ Make sure that the supply voltage corresponds to the rated product voltage.
- ▶ The product must be installed by a qualified electrician in accordance with the National Electrical Code and corresponding local codes.
- ▶ If the product is damaged, do not use it.

INSTALLATION STEPS:

1. Use template to cut an appropriately sized hole. Disconnect the fixture from the junction box. Choose needed color temperature by adjusting the switch on the junction box or on the cord.
2. Open junction box. Connect the wires: Black to Black, White to White, Green to Green. Secure the connection with quick connector. Close the junction box.
3. Insert the junction box into the cut hole, leaving the connection cable outside. Connect the fixture to the Junction box inserting the cable and securing it with a cap. Push the spring loaded clips upwards and insert the fixture base into the mounting hole. Release the clips, so the fixture fits securely.



* The fixture is suitable for ceilings up to 1-3/4" thick.

⚠ WARNING

Risk of personal injury – read and follow all warnings and installation instructions. Keep or give to the owner for future reference.

Risk of cuts: Wear gloves to prevent cuts or abrasions when removing from carton, handling, installing, and maintaining this product.

Risk of electric shock: This product must be installed in accordance with the applicable installation code by a person familiar with the construction and operation of the product and the hazards involved.

Risk of Fire: Minimum 194°F supply conductors. Consult a qualified electrician to ensure correct branch circuit conductor.

ASD® assumes no responsibility for claims arising out of improper or careless Installation or handling of this product.

MOUNTING PLATE INSTALLATION

ASD-MPLR-346-FA

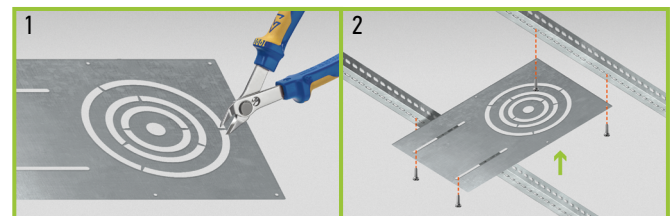
ASD-MPLR18-346-FA

ASD-MPLR-346-FS

ASD-MPLR-346-SC

sold separately:

1. Remove the metal ring from the mounting plate according to the size of fixture.
2. Place the mounting plate and secure its position with screws on the beams.



For most up-to-date spec sheets please refer to asd-lighting.com

ASD LIGHTING CORP

E-mail: orders@asd-lighting.com | Web site: www.asd-lighting.com





LED WAFER FIRE RATED ROUND

JFR series

EXTENSION CORD INSTALLATION:

ASD-EC-10A-6PACK **ASD-EC-20A-6PACK**

sold separately:

1. Disconnect the LED Wafer cable from the Junction box cable.
2. Connect one end of the Extension Cord to the LED Wafer cable, and the other end of the Extension Cord to the Junction box cable.

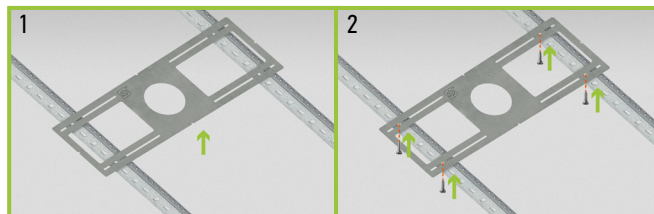


MOUNTING PLATE INSTALLATION

ASD-MPLR-4-FS **ASD-MPLR-6-FS**

sold separately:

1. Adjust a mounting plate to a suitable place.
2. Secure the mounting plate to the beams with screws.



ORDERING INFORMATION

Model	Product dimensions	Weight	Pcs. per carton	Carton size	Carton weight	UPC	GTIN 14
JFR							
ASD-JFR-4D12AC-WH	4-15/16" x 4-15/16" x 2-1/4"	1.0 lbs(0.5kg)	6	12.52" x 6.77" x 9.25"	8.6 lbs	81012811148	20810128111489
ASD-JFR-6D15AC-WH	6-7/8" x 6-7/8" x 2-1/4"	1.3 lbs(0.6kg)	6	14.88" x 7.56" x 9.25"	10.4 lbs	81012811149	20810128111496
ASD-JFR-8D20AC-WH	8-13/16" x 8-13/16" x 2-5/16"	1.8 lbs(0.8kg)	4	19.61" x 9.92" x 7.56"	9.0 lbs	81019020340	10810190203405
JFRB-MV							
ASD-JFRB-MV-4D12BK	4-15/16" x 4-15/16" x 2-3/8"	1.1 lbs(0.5kg)	6	13.15" x 6.81" x 9.72"	9.0 lbs	81012811782	10810128117828
ASD-JFRB-MV-4D12WH	4-15/16" x 4-15/16" x 2-3/8"	1.1 lbs(0.5kg)	6	13.15" x 6.81" x 9.72"	9.0 lbs	81012811504	10810128115046
ASD-JFRB-MV-6D15BK	6-7/8" x 6-7/8" x 2-5/16"	1.3 lbs(0.6kg)	6	14.88" x 7.56" x 9.25"	10.4 lbs	81012811783	10810128117835
ASD-JFRB-MV-6D15WH	6-7/8" x 6-7/8" x 2-5/16"	1.3 lbs(0.6kg)	6	14.88" x 7.56" x 9.25"	10.4 lbs	81012811505	10810128115053

ACCESSORIES:

Model	Product dimensions	Pcs. per carton	Carton size	Carton weight	UPC	GTIN 14
BLD-HM08D	10-7/16" x 1-15/16" x 15/16"	10	17.1" x 14.6" x 11"	19.6 lbs	810128111508	10810128111505
BLD-HM15D	12-15/16" x 1-7/16" x 15/16"	10	17.8" x 13.5" x 9.5"	21.1 lbs	810050734882	10810050734889
ASD-EMK-JBR	9-15/16" x 2-13/16" x 1-3/8"	10	7.7" x 6.1" x 5.3"	1.8 lbs	810128110471	10810128110478
ASD-MPLR-346-FA-6PACK	13-1/4" x 9-1/16" x 1/16"	4	14.1" x 10.2" x 3.8"	23.6 lbs	810050739344	10810050739341
ASD-MPLR18-346-FA-6PACK	18" x 9-1/16" x 1/16"	4	18.9" x 10.2" x 3.8"	32 lbs	810128112826	10810128112823
ASD-MPLR-346-FS-6PACK	26" x 8-1/4" x 1/16"	4	26.9" x 9.5" x 3.8"	26.4 lbs	810050739351	10810050739358
ASD-MPLR-4-FS-6PACK	26" x 8-1/4" x 1/16"	4	26.89" x 9.45" x 3.82"	26.2 lbs	81019020256	10810190202569
ASD-MPLR-6-FS-6PACK	26" x 8-1/4" x 1/16"	4	26.89" x 9.45" x 3.82"	26.3 lbs	81019020257	10810190202576
ASD-MPLR-81012-FS-6PACK	26" x 13" x 1/16"	4	27" x 13.8" x 3.2"	42.9 lbs	810128112840	10810128111574
ASD-MPLR-346-SC-6PACK	14-3/8" x 10-9/16" x 1-5/8"	2	17.3" x 11.9" x 13.4"	17 lbs	810050739337	10810050739334
ASD-MPLR-81012-SC-6PACK	17-11/16" x 14-3/4" x 1-9/16"	2	21.3" x 17.5" x 15.6"	24.7 lbs	810128111607	10810128111604
ASD-EC-10A-6PACK	10"	10	7.7" x 6.1" x 5.3"	1.8 lbs	810128110471	10810128110478
ASD-EC-20A-6PACK	20"	10	7.7" x 6.1" x 7.3"	3.1 lbs	810128110488	10810128110485

For most up-to-date spec sheets please refer to asd-lighting.com

ASD LIGHTING CORP

E-mail: orders@asd-lighting.com | Web site: www.asd-lighting.com

