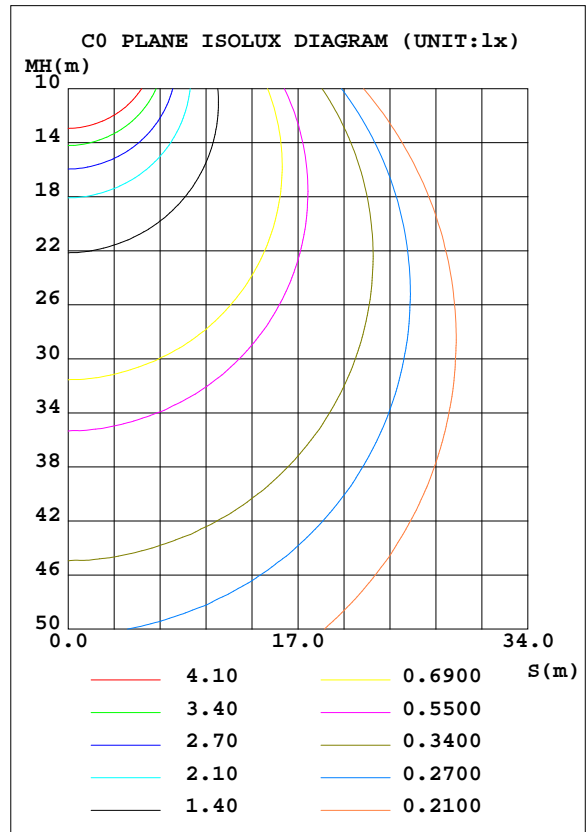
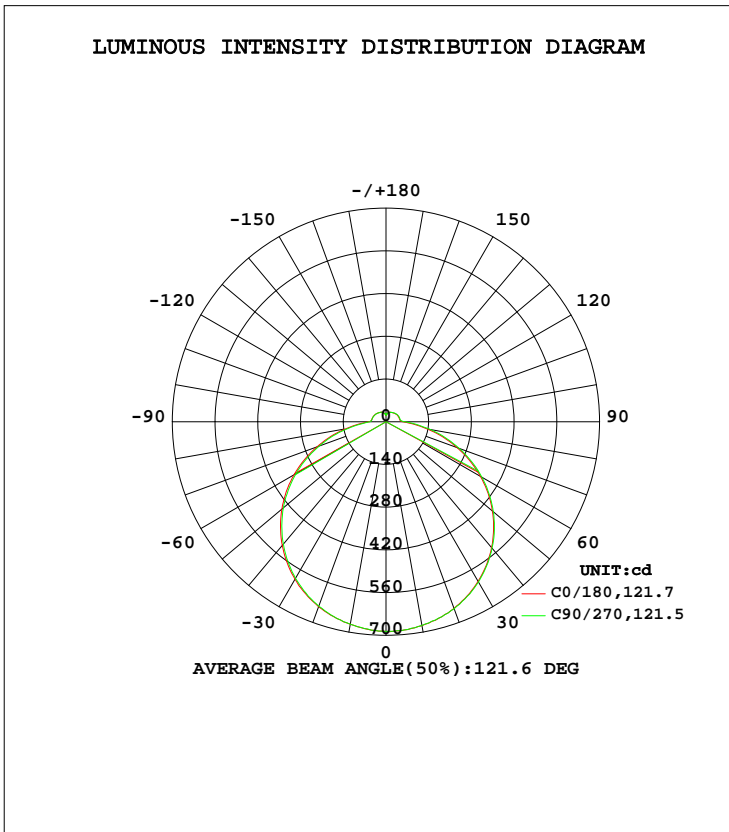


LUMINAIRE PHOTOMETRIC TEST REPORT

Test:U:119.9V I:0.3674A P:42.28W PF:0.9594 Lamp Flux:2500.48x1 lm		
NAME: ASD-LOFT-FM-20D42BK	TYPE:N/A	WEIGHT:N/A
SPEC.:N/A	DIM.: N/A	SERIAL No.:N/A
MFR.: ASD Lighting corp	SUR.:N/A	Shielding Angle:N/A

DATA OF LAMP		PHOTOMETRIC DATA Eff: 59.14 lm/W			
MODEL	PSZ2G230106002-10	I _{max} (cd)	688.1	S/MH(C0/180)	1.31
NOMINAL POWER(W)		LOR(%)	100.0	S/MH(C90/270)	1.31
RATED VOLTAGE(V)	120	TOTAL FLUX(lm)	2500.5	η UP, DN(C0-180)	5.3,43.9
NOMINAL FLUX(lm)	2500.48	CIE CLASS	SEMI-D.	η UP, DN(C180-360)	5.4,45.4
LAMPS INSIDE	1	η up(%)	10.7	CIBSE SHR NOM	1.50
TEST VOLTAGE(V)	120	η down(%)	89.3	CIBSE SHR MAX	1.50



C Range: 0 - 360DEG
 C Interval: 22.5DEG
 Test Speed: HIGH
 Temperature:24.3DEG
 Operators:Carl
 Test Date:2023-01-28

Carl Deng

γ Range: 0 - 180DEG
 γ Interval: 1.0DEG
 Test System:EVERFINE GO-R5000_V2 SYSTEM V2.0.351
 Humidity:49%
 Test Distance:2.532m [K=1.0000]
 Remarks:

Reviewed by : *Meng He*

ZONAL FLUX DIAGRAM

ZONAL FLUX DIAGRAM:

γ	C0	C45	C90	C135	C180	C225	C270	C315	γ	Φ zone	Φ total	%lum, lamp
10	674.0	673.5	674.0	676.3	678.7	679.1	678.3	675.4	0- 10	65.03	65.03	2.6,2.6
20	645.5	642.2	643.4	648.0	651.3	652.4	652.6	647.9	10- 20	187.6	252.6	10.1,10.1
30	596.1	591.4	592.9	599.2	603.8	606.7	606.1	600.5	20- 30	288.7	541.3	21.6,21.6
40	528.7	521.8	523.3	531.5	538.0	542.1	540.7	535.0	30- 40	355.8	897.0	35.9,35.9
50	445.5	436.8	438.8	447.6	455.1	459.9	458.9	452.3	40- 50	380.5	1277	51.1,51.1
60	347.9	338.5	340.5	349.3	356.8	362.7	362.4	355.0	50- 60	359.6	1637	65.5,65.5
70	240.8	231.5	232.5	240.6	247.8	254.7	254.9	246.7	60- 70	295.6	1933	77.3,77.3
80	134.2	126.7	125.5	130.4	137.6	146.7	147.3	139.3	70- 80	200.6	2133	85.3,85.3
90	58.13	55.87	53.98	55.69	56.48	60.98	62.57	59.72	80- 90	100.2	2234	89.3,89.3
100	47.19	47.19	46.95	46.09	45.74	46.34	47.14	47.01	90-100	54.06	2288	91.5,91.5
110	45.98	45.92	45.39	44.83	44.82	45.27	46.22	45.82	100-110	48.83	2336	93.4,93.4
120	44.00	43.91	43.55	43.14	43.26	43.86	44.30	44.01	110-120	44.40	2381	95.2,95.2
130	41.64	41.37	41.07	40.83	40.80	41.42	41.85	41.71	120-130	38.24	2419	96.7,96.7
140	38.71	38.57	38.35	37.92	38.07	38.30	38.66	38.20	130-140	30.91	2450	98,98
150	36.14	36.29	36.24	35.50	35.66	35.81	35.90	35.36	140-150	23.34	2473	98.9,98.9
160	34.06	32.67	33.41	32.46	33.81	33.58	32.81	32.67	150-160	16.00	2489	99.6,99.6
170	27.62	27.55	27.62	28.22	27.11	26.93	27.56	26.66	160-170	8.766	2498	99.9,99.9
180	27.95	29.04	28.47	28.30	26.49	26.51	27.37	26.59	170-180	2.361	2500	100,100
DEG	LUMINOUS INTENSITY:cd									UNIT:lm		

Conical surface Flux(90deg): 1087 lm

%lum = 43.5%
%lamp = 43.5%

Conical surface Flux(120deg): 1637.1 lm

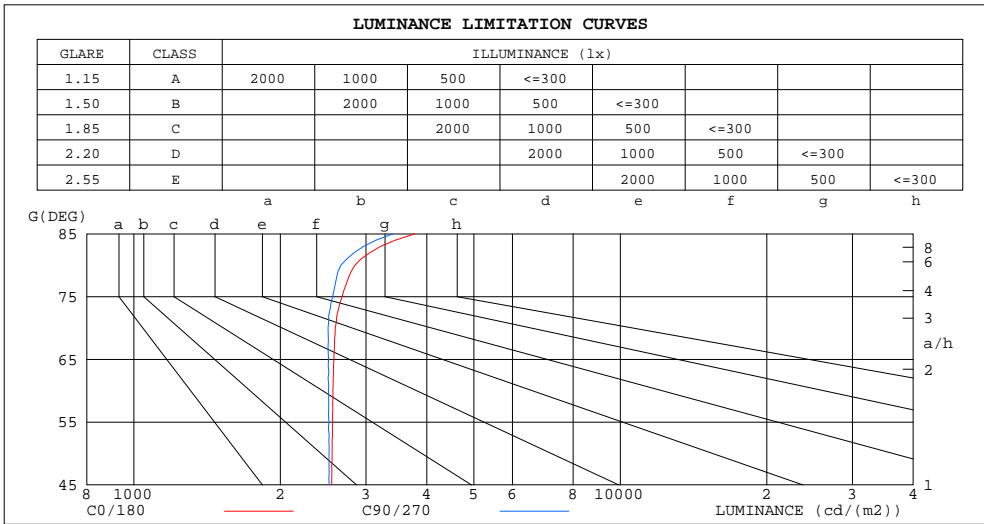
%lum = 65.5%
%lamp = 65.5%

C Range: 0 - 360DEG
C Interval: 22.5DEG
Test Speed: HIGH
Temperature:24.3DEG
Operators:Carl
Test Date:2023-01-28

γ Range: 0 - 180DEG
γ Interval: 1.0DEG
Test System:EVERFINE GO-R5000_V2 SYSTEM V2.0.351
Humidity:49%
Test Distance:2.532m [K=1.0000]
Remarks:

LUMINANCE LIMITATION CURVES

Test:U:119.9V I:0.3674A P:42.28W PF:0.9594 Lamp Flux:2500.48x1 lm		
NAME: ASD-LOFT-FM-20D42BK	TYPE:N/A	WEIGHT:N/A
SPEC.:N/A	DIM.: N/A	SERIAL No.:N/A
MFR.: ASD Lighting corp	SUR.:N/A	Shielding Angle:N/A



LUMINANCE cd/(m2)		
G (DEG)	C0/180	C90/270
85	3780	3407
80	2848	2664
75	2680	2564
70	2595	2507
65	2577	2512
60	2565	2512
55	2563	2519
50	2555	2517
45	2550	2519

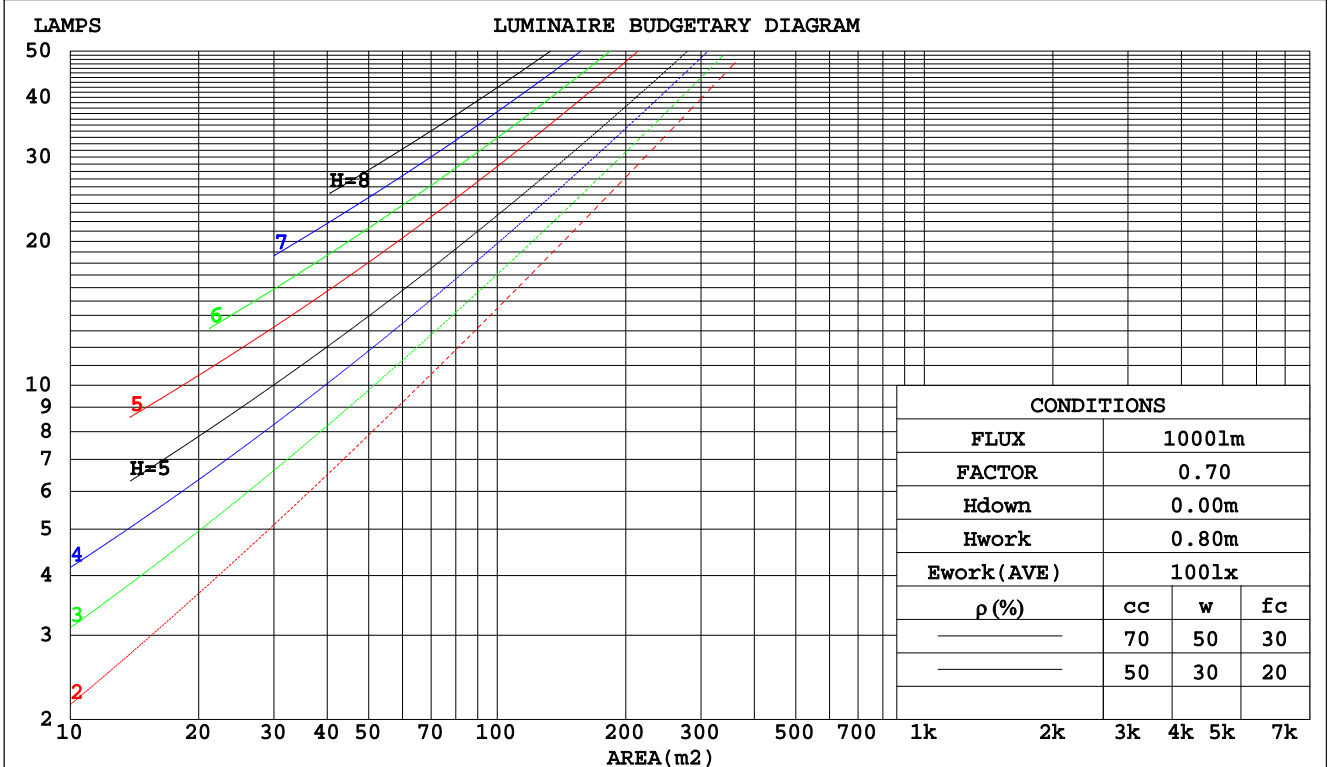
C Range: 0 - 360DEG
 C Interval: 22.5DEG
 Test Speed: HIGH
 Temperature: 24.3DEG
 Operators: Carl
 Test Date: 2023-01-28

γ Range: 0 - 180DEG
 γ Interval: 1.0DEG
 Test System: EVERFINE GO-R5000_V2 SYSTEM V2.0.351
 Humidity: 49%
 Test Distance: 2.532m [K=1.0000]
 Remarks:

CU AND LUMINAIRE BUDGETARY ESTIMATE DIAGRAM

Test:U:119.9V I:0.3674A P:42.28W PF:0.9594 Lamp Flux:2500.48x1 lm		
NAME: ASD-LOFT-FM-20D42BK	TYPE:N/A	WEIGHT:N/A
SPEC.:N/A	DIM.: N/A	SERIAL No.:N/A
MFR.: ASD Lighting corp	SUR.:N/A	Shielding Angle:N/A

pcc	80%			70%			50%			30%			10%			0
	50%	30%	10%	50%	30%	10%	50%	30%	10%	50%	30%	10%	50%	30%	10%	0
pw																0
pfc	20%			20%			20%			20%			20%			0
RCR	RCR:Room Cavity Ratio						Coefficients of Utilization(CU)									
0.0	1.17	1.17	1.17	1.13	1.13	1.13	1.05	1.05	1.05	.98	.98	.98	.92	.92	.92	.89
1.0	.00	.95	.91	.96	.92	.88	.90	.87	.83	.84	.82	.79	.79	.77	.75	.72
2.0	.86	.79	.73	.83	.77	.71	.78	.72	.68	.73	.69	.65	.68	.65	.62	.59
3.0	.75	.67	.60	.73	.65	.58	.68	.62	.56	.64	.58	.54	.60	.55	.52	.49
4.0	.66	.57	.50	.64	.56	.49	.60	.53	.47	.57	.51	.46	.53	.48	.44	.41
5.0	.59	.50	.43	.57	.49	.42	.54	.46	.41	.51	.44	.39	.48	.42	.38	.35
6.0	.53	.44	.37	.51	.43	.37	.48	.41	.35	.46	.39	.34	.43	.37	.33	.31
7.0	.48	.39	.33	.46	.38	.32	.44	.36	.31	.42	.35	.30	.39	.34	.29	.27
8.0	.43	.35	.29	.42	.34	.28	.40	.33	.28	.38	.32	.27	.36	.30	.26	.24
9.0	.40	.31	.26	.39	.31	.25	.37	.30	.25	.35	.29	.24	.33	.28	.23	.21
10.0	.37	.29	.23	.36	.28	.23	.34	.27	.22	.32	.26	.22	.31	.25	.21	.19



C Range: 0 - 360DEG
 C Interval: 22.5DEG
 Test Speed: HIGH
 Temperature:24.3DEG
 Operators:Carl
 Test Date:2023-01-28

γ Range: 0 - 180DEG
 γ Interval: 1.0DEG
 Test System:EVERFINE GO-R5000_V2 SYSTEM V2.0.351
 Humidity:49%
 Test Distance:2.532m [K=1.0000]
 Remarks:

WEC AND CCEC

Test:U:119.9V I:0.3674A P:42.28W PF:0.9594 Lamp Flux:2500.48x1 lm		
NAME: ASD-LOFT-FM-20D42BK	TYPE:N/A	WEIGHT:N/A
SPEC.:N/A	DIM.: N/A	SERIAL No.:N/A
MFR.: ASD Lighting corp	SUR.:N/A	Shielding Angle:N/A

ρcc	80%			70%			50%			30%			10%			0
ρw	50%	30%	10%	50%	30%	10%	50%	30%	10%	50%	30%	10%	50%	30%	10%	0
ρfc	20%			20%			20%			20%			20%			0
RCR	RCR:Room Cavity Ratio						Wall Exitance Coefficients(WEC)									
0.0																
1.0	.340	.194	.061	.330	.188	.060	.311	.178	.057	.293	.169	.054	.276	.160	.052	
2.0	.309	.169	.052	.299	.165	.051	.282	.157	.049	.266	.149	.047	.251	.142	.045	
3.0	.281	.149	.045	.272	.146	.044	.257	.139	.042	.242	.133	.041	.229	.127	.039	
4.0	.256	.133	.039	.249	.130	.038	.235	.124	.037	.221	.119	.036	.209	.114	.035	
5.0	.235	.120	.035	.228	.117	.034	.216	.112	.033	.204	.107	.032	.193	.103	.031	
6.0	.217	.109	.031	.211	.106	.031	.199	.102	.030	.188	.098	.029	.178	.094	.028	
7.0	.201	.099	.028	.196	.097	.028	.185	.094	.027	.175	.090	.026	.166	.086	.025	
8.0	.187	.091	.026	.182	.090	.025	.173	.086	.025	.164	.083	.024	.155	.080	.023	
9.0	.175	.085	.024	.170	.083	.023	.162	.080	.023	.153	.077	.022	.145	.074	.021	
10.0	.164	.079	.022	.160	.077	.022	.152	.074	.021	.144	.072	.020	.137	.069	.020	

ρcc	80%			70%			50%			30%			10%			0
ρw	50%	30%	10%	50%	30%	10%	50%	30%	10%	50%	30%	10%	50%	30%	10%	0
ρfc	20%			20%			20%			20%			20%			0
RCR	RCR:Room Cavity Ratio						Ceiling Cavity Exitance Coefficients(CCEC)									
0.0	.272	.272	.272	.232	.232	.232	.159	.159	.159	.091	.091	.091	.029	.029	.029	
1.0	.264	.238	.214	.226	.204	.184	.155	.140	.127	.089	.081	.074	.029	.026	.024	
2.0	.257	.214	.178	.220	.185	.154	.151	.128	.108	.087	.074	.063	.028	.024	.021	
3.0	.250	.197	.156	.214	.170	.135	.147	.118	.095	.085	.069	.056	.027	.022	.018	
4.0	.242	.184	.141	.208	.159	.122	.143	.111	.086	.083	.065	.051	.027	.021	.017	
5.0	.234	.174	.130	.201	.151	.113	.139	.105	.080	.080	.062	.047	.026	.020	.016	
6.0	.227	.166	.123	.195	.144	.107	.135	.101	.076	.078	.059	.045	.025	.019	.015	
7.0	.220	.160	.117	.190	.138	.102	.131	.097	.072	.076	.057	.043	.025	.019	.014	
8.0	.214	.154	.113	.184	.134	.098	.127	.094	.070	.074	.055	.042	.024	.018	.014	
9.0	.208	.149	.109	.179	.129	.096	.124	.091	.068	.072	.054	.040	.023	.018	.013	
10.0	.202	.145	.107	.174	.126	.093	.121	.089	.066	.070	.052	.040	.023	.017	.013	

C Range: 0 - 360DEG
 C Interval: 22.5DEG
 Test Speed: HIGH
 Temperature:24.3DEG
 Operators:Carl
 Test Date:2023-01-28

γ Range: 0 - 180DEG
 γ Interval: 1.0DEG
 Test System:EVERFINE GO-R5000_V2 SYSTEM V2.0.351
 Humidity:49%
 Test Distance:2.532m [K=1.0000]
 Remarks:

UGR(Unified Glare Rating) Table

Test:U:119.9V I:0.3674A P:42.28W PF:0.9594 Lamp Flux:2500.48x1 lm										
NAME: ASD-LOFT-FM-20D42BK					TYPE:N/A			WEIGHT:N/A		
SPEC.:N/A					DIM.: N/A			SERIAL No.:N/A		
MFR.: ASD Lighting corp					SUR.:N/A			Shielding Angle:N/A		
ceiling/cavity	0.7	0.7	0.5	0.5	0.3	0.7	0.7	0.5	0.5	0.3
walls	0.5	0.3	0.5	0.3	0.3	0.5	0.3	0.5	0.3	0.3
working plane	0.2	0.2	0.2	0.2	0.2	0.2	0.2	0.2	0.2	0.2
Room dimensions	Viewed crosswise					Viewed endwise				
x = 2H y = 2H	15.5	16.9	15.9	17.3	17.7	15.4	16.8	15.8	17.2	17.6
3H	17.3	18.6	17.7	19.0	19.4	17.1	18.4	17.6	18.9	19.3
4H	18.1	19.3	18.6	19.8	20.2	17.9	19.2	18.4	19.6	20.1
6H	18.8	20.0	19.3	20.5	21.0	18.6	19.8	19.1	20.3	20.8
8H	19.2	20.3	19.7	20.8	21.3	18.9	20.1	19.4	20.5	21.1
12H	19.5	20.6	20.0	21.1	21.6	19.2	20.3	19.7	20.8	21.3
4H 2H	16.1	17.3	16.5	17.8	18.2	16.0	17.3	16.5	17.7	18.2
3H	18.1	19.1	18.6	19.6	20.2	18.0	19.0	18.5	19.5	20.1
4H	19.0	20.0	19.6	20.5	21.1	18.9	19.9	19.4	20.4	21.0
6H	19.9	20.8	20.5	21.3	21.9	19.8	20.6	20.3	21.2	21.8
8H	20.3	21.2	20.9	21.7	22.3	20.1	21.0	20.7	21.5	22.1
12H	20.8	21.5	21.4	22.1	22.7	20.5	21.3	21.1	21.8	22.5
8H 4H	19.4	20.2	19.9	20.7	21.3	19.3	20.1	19.8	20.6	21.2
6H	20.5	21.1	21.1	21.7	22.4	20.3	21.0	20.9	21.6	22.2
8H	21.0	21.6	21.6	22.2	22.9	20.8	21.4	21.4	22.0	22.7
12H	21.6	22.1	22.2	22.8	23.5	21.4	21.9	22.0	22.5	23.2
12H 4H	19.4	20.2	20.0	20.7	21.4	19.3	20.0	19.9	20.6	21.2
6H	20.6	21.2	21.2	21.8	22.5	20.4	21.0	21.0	21.6	22.3
8H	21.2	21.7	21.8	22.3	23.0	21.0	21.5	21.6	22.2	22.9
Variations with the observer position at spacings:										
S = 1.0H	+ 0.1 / - 0.1					+ 0.1 / - 0.2				
1.5H	+ 0.2 / - 0.3					+ 0.2 / - 0.3				
2.0H	+ 0.1 / - 0.3					+ 0.1 / - 0.3				

CIE Pub.117 Corrected 2500 lm Total Lamp Luminous Flux.(8log(F/F0) = 3.2)

C Range: 0 - 360DEG
 C Interval: 22.5DEG
 Test Speed: HIGH
 Temperature:24.3DEG
 Operators:Carl
 Test Date:2023-01-28

γ Range: 0 - 180DEG
 γ Interval: 1.0DEG
 Test System:EVERFINE GO-R5000_V2 SYSTEM V2.0.351
 Humidity:49%
 Test Distance:2.532m [K=1.0000]
 Remarks:

UTILIZATION FACTORS TABLE

Test:U:119.9V I:0.3674A P:42.28W PF:0.9594 Lamp Flux:2500.48x1 lm		
NAME: ASD-LOFT-FM-20D42BK	TYPE:N/A	WEIGHT:N/A
SPEC.:N/A	DIM.: N/A	SERIAL No.:N/A
MFR.: ASD Lighting corp	SUR.:N/A	Shielding Angle:N/A

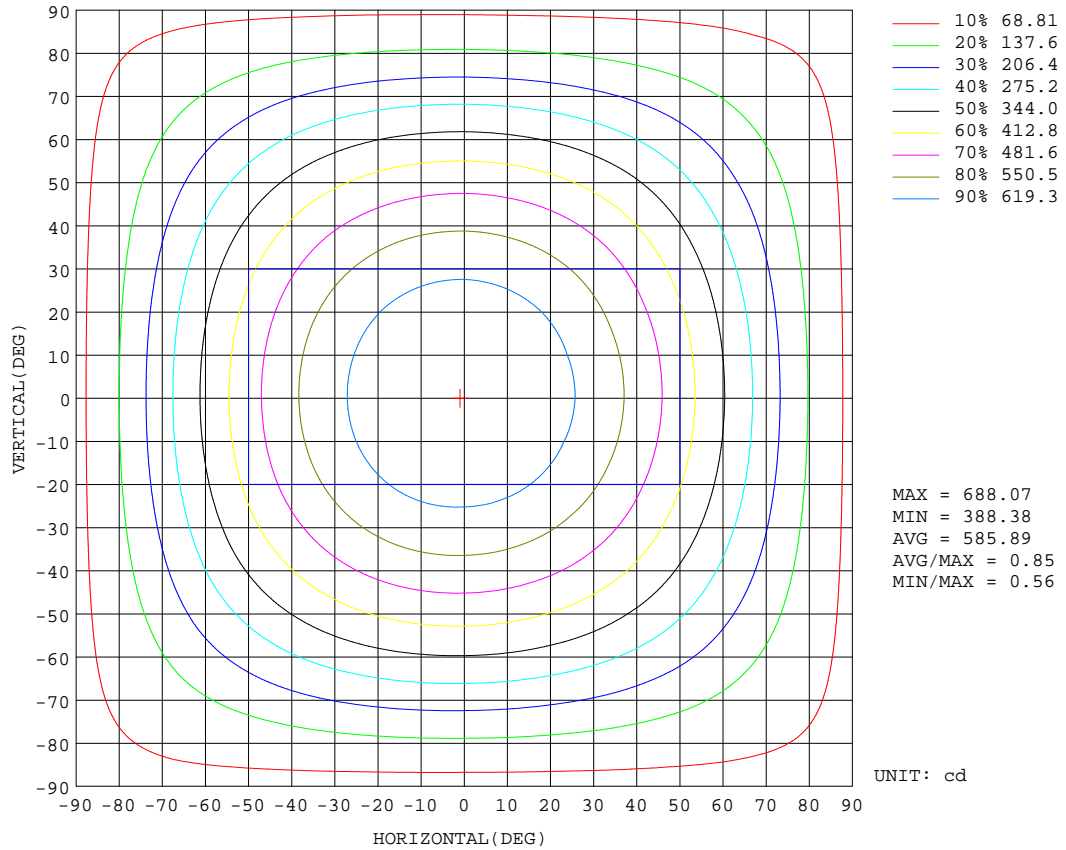
REFLECTANCE										
Ceiling	0.8	0.8	0.8	0.7	0.7	0.7	0.5	0.5	0.5	0
Walls	0.7	0.5	0.3	0.7	0.5	0.3	0.7	0.5	0.3	0
Working plane	0.2	0.2	0.2	0.2	0.2	0.2	0.2	0.2	0.2	0
ROOM INDEX	UTILIZATION FACTORS(PERCENT) $k(RI) \times RCR = 5$									
k = 0.60	52	40	33	51	40	33	49	39	33	26
0.80	62	50	42	60	49	42	58	48	41	33
1.00	70	58	50	68	57	50	65	58	49	41
1.25	77	66	58	75	64	57	71	62	56	47
1.50	82	71	63	80	70	63	76	67	61	51
2.00	89	80	72	87	78	71	82	74	69	58
2.50	94	85	78	91	83	76	85	79	73	62
3.00	97	89	83	94	87	81	88	83	78	66
4.00	101	95	89	98	92	87	92	87	83	71
5.00	104	98	94	101	96	91	94	90	87	74
ROOM INDEX	UF(total)									Direct
According to DIN EN 13032-2 2004			Suspended				SHRNOM = 1.25			

C Range: 0 - 360DEG
 C Interval: 22.5DEG
 Test Speed: HIGH
 Temperature:24.3DEG
 Operators:Carl
 Test Date:2023-01-28

γ Range: 0 - 180DEG
 γ Interval: 1.0DEG
 Test System:EVERFINE GO-R5000_V2 SYSTEM V2.0.351
 Humidity:49%
 Test Distance:2.532m [K=1.0000]
 Remarks:

ISOCANDELA DIAGRAM

Test:U:119.9V I:0.3674A P:42.28W PF:0.9594 Lamp Flux:2500.48x1 lm		
NAME: ASD-LOFT-FM-20D42BK	TYPE:N/A	WEIGHT:N/A
SPEC.:N/A	DIM.: N/A	SERIAL No.:N/A
MFR.: ASD Lighting corp	SUR.:N/A	Shielding Angle:N/A

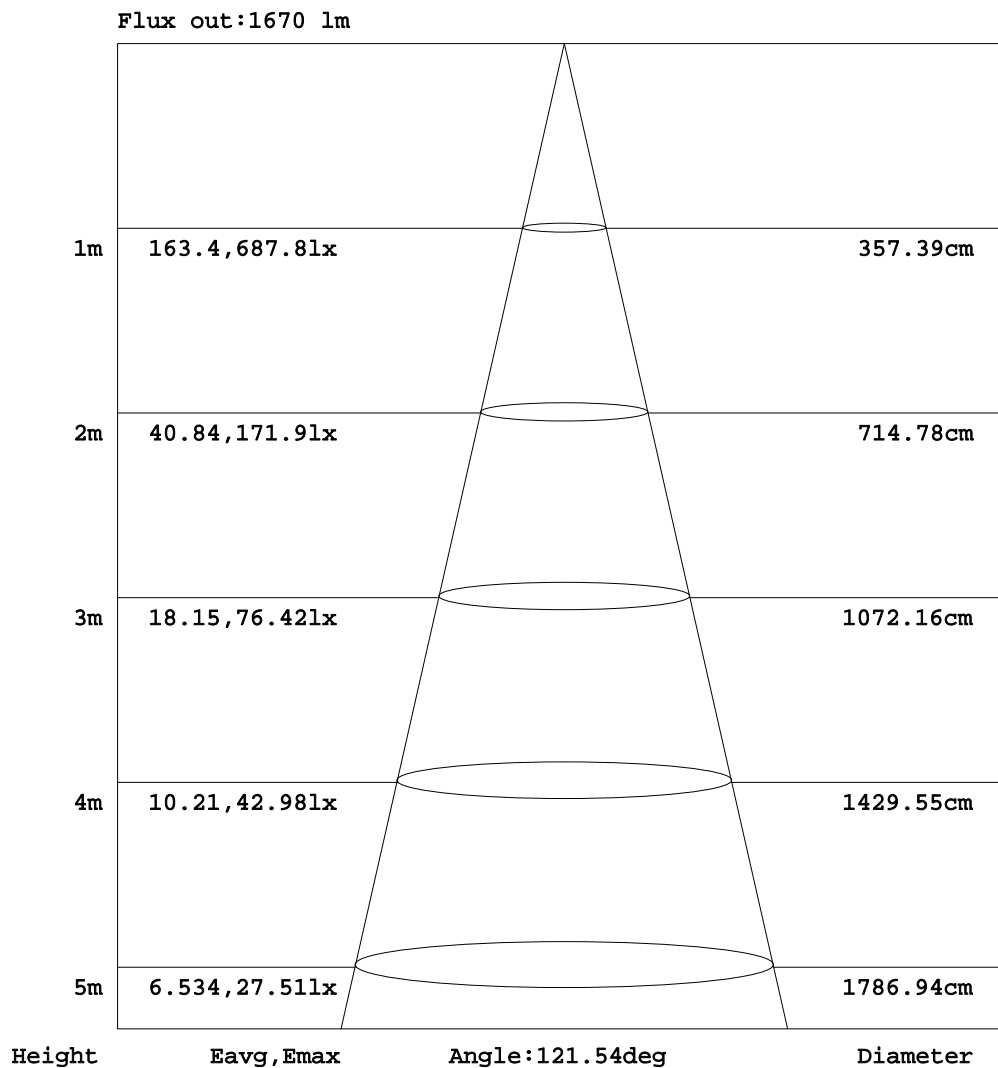


C Range: 0 - 360DEG
 C Interval: 22.5DEG
 Test Speed: HIGH
 Temperature:24.3DEG
 Operators:Carl
 Test Date:2023-01-28

γ Range: 0 - 180DEG
 γ Interval: 1.0DEG
 Test System:EVERFINE GO-R5000_V2 SYSTEM V2.0.351
 Humidity:49%
 Test Distance:2.532m [K=1.0000]
 Remarks:

AAI Figure

Test:U:119.9V I:0.3674A P:42.28W PF:0.9594 Lamp Flux:2500.48x1 lm		
NAME: ASD-LOFT-FM-20D42BK	TYPE:N/A	WEIGHT:N/A
SPEC.:N/A	DIM.: N/A	SERIAL No.:N/A
MFR.: ASD Lighting corp	SUR.:N/A	Shielding Angle:N/A



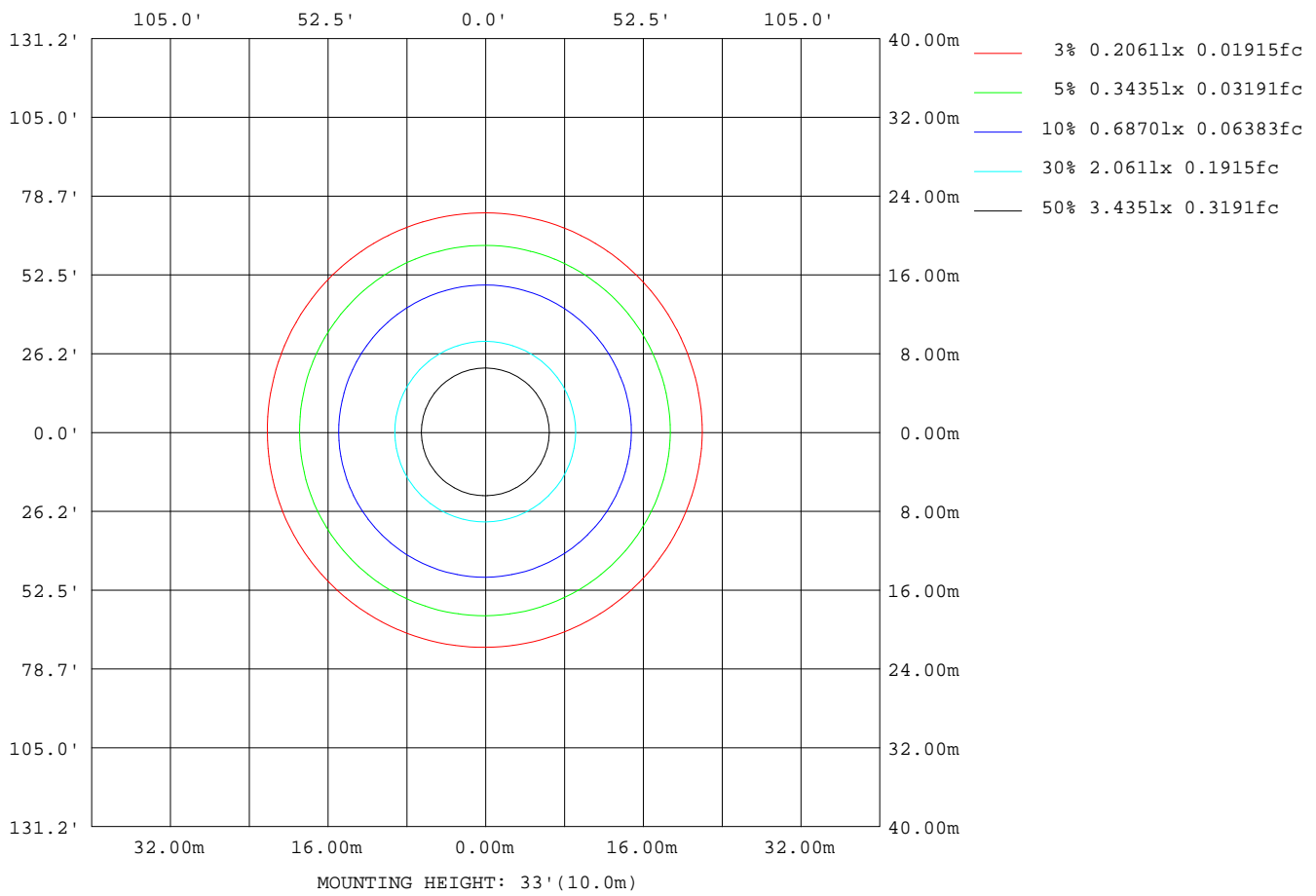
Note:The Curves indicate the illuminated area and the average illumination when the luminaire is at different distance.

C Range: 0 - 360DEG
 C Interval: 22.5DEG
 Test Speed: HIGH
 Temperature:24.3DEG
 Operators:Carl
 Test Date:2023-01-28

γ Range: 0 - 180DEG
 γ Interval: 1.0DEG
 Test System:EVERFINE GO-R5000_V2 SYSTEM V2.0.351
 Humidity:49%
 Test Distance:2.532m [K=1.0000]
 Remarks:

ISOLUX DIAGRAM

Test:U:119.9V I:0.3674A P:42.28W PF:0.9594 Lamp Flux:2500.48x1 lm		
NAME: ASD-LOFT-FM-20D42BK	TYPE:N/A	WEIGHT:N/A
SPEC.:N/A	DIM.: N/A	SERIAL No.:N/A
MFR.: ASD Lighting corp	SUR.:N/A	Shielding Angle:N/A



C Range: 0 - 360DEG
 C Interval: 22.5DEG
 Test Speed: HIGH
 Temperature:24.3DEG
 Operators:Carl
 Test Date:2023-01-28

γ Range: 0 - 180DEG
 γ Interval: 1.0DEG
 Test System:EVERFINE GO-R5000_V2 SYSTEM V2.0.351
 Humidity:49%
 Test Distance:2.532m [K=1.0000]
 Remarks:

LED Avg.L Report

Test:U:119.9V I:0.3674A P:42.28W PF:0.9594 Lamp Flux:2500.48x1 lm		
NAME: ASD-LOFT-FM-20D42BK	TYPE:N/A	WEIGHT:N/A
SPEC.:N/A	DIM.: N/A	SERIAL No.:N/A
MFR.: ASD Lighting corp	SUR.:N/A	Shielding Angle:N/A

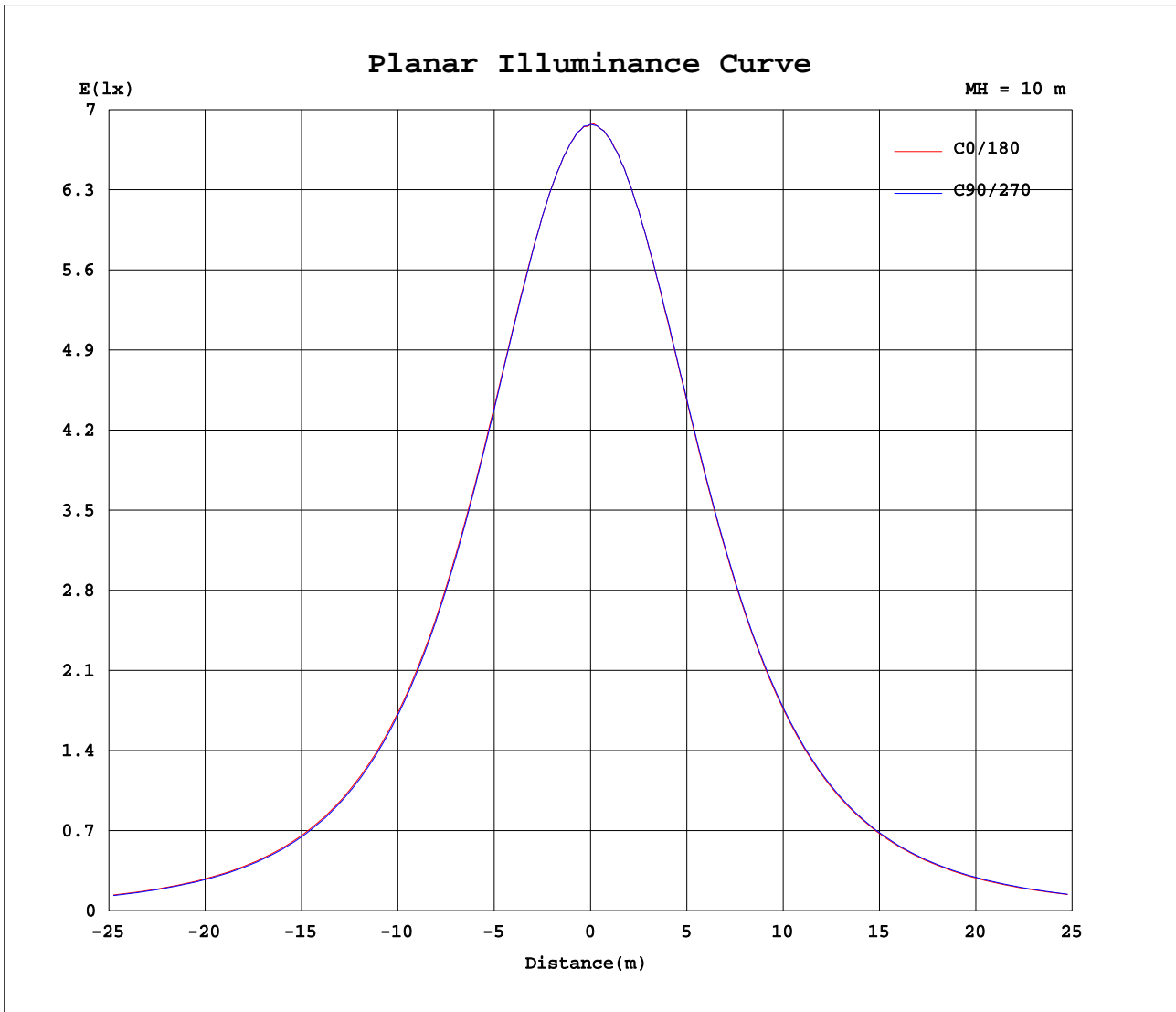
AvgL	cd/m2
L_0~180(65)av	2613
L_0~180(75)av	2718
L_0~180(85)av	3782
L_90~270(65)av	2607
L_90~270(75)av	2713
L_90~270(85)av	3807
L_45(65)av	2606
L_45(75)av	2709
L_45(85)av	3779

Standard: GB/T 29293-2012

C Range: 0 - 360DEG
 C Interval: 22.5DEG
 Test Speed: HIGH
 Temperature:24.3DEG
 Operators:Carl
 Test Date:2023-01-28

γ Range: 0 - 180DEG
 γ Interval: 1.0DEG
 Test System:EVERFINE GO-R5000_V2 SYSTEM V2.0.351
 Humidity:49%
 Test Distance:2.532m [K=1.0000]
 Remarks:

Planar Illuminance Curve



C Range: 0 - 360DEG
 C Interval: 22.5DEG
 Test Speed: HIGH
 Temperature: 24.3DEG
 Operators: Carl
 Test Date: 2023-01-28

γ Range: 0 - 180DEG
 γ Interval: 1.0DEG
 Test System: EVERFINE GO-R5000_V2 SYSTEM V2.0.351
 Humidity: 49%
 Test Distance: 2.532m [K=1.0000]
 Remarks:

LUMINOUS DISTRIBUTION INTENSITY DATA

Test:U:119.9V I:0.3674A P:42.28W PF:0.9594 Lamp Flux:2500.48x1 lm		
NAME: ASD-LOFT-FM-20D42BK	TYPE:N/A	WEIGHT:N/A
SPEC.:N/A	DIM.: N/A	SERIAL No.:N/A
MFR.: ASD Lighting corp	SUR.:N/A	Shielding Angle:N/A

Table--1

UNIT: cd

C(DEG) γ (DEG)	0	22.5	45	67.5	90	112.5	135	157.5	180	202.5	225	247.5	270	292.5	315	337.5			
0	687	687	687	687	687	687	687	687	687	687	687	687	687	687	687	687			
5	683	682	682	682	682	683	683	685	685	685	685	684	685	684	683	683			
10	674	674	673	673	674	675	676	677	679	680	679	679	678	677	675	675			
15	661	661	660	661	661	663	665	666	667	667	668	667	666	665	663	662			
20	646	644	642	642	643	645	648	650	651	652	652	652	653	650	648	646			
25	623	620	619	619	620	623	626	629	630	631	631	632	631	629	626	623			
30	596	593	591	591	593	596	599	603	604	606	607	607	606	604	600	597			
35	565	561	558	558	560	564	568	572	574	576	577	577	576	574	570	566			
40	529	525	522	522	523	528	531	537	538	540	542	542	541	538	535	531			
45	489	484	481	481	483	488	492	497	499	502	503	504	502	500	496	491			
50	446	440	437	437	439	443	448	453	455	458	460	460	459	457	452	447			
55	399	393	390	389	392	396	401	406	409	412	413	414	413	411	406	401			
60	348	343	339	338	341	345	349	355	357	361	363	363	362	360	355	350			
65	296	290	287	286	288	292	296	302	304	308	310	311	310	307	302	297			
70	241	235	232	231	233	236	241	247	248	252	255	256	255	252	247	242			
75	188	183	179	179	180	183	187	193	194	198	200	202	201	198	194	189			
80	134	130	127	125	125	128	130	136	138	143	147	148	147	144	139	135			
85	89.4	85.4	82.4	80.7	80.5	81.6	83.9	88.0	89.5	94.4	97.7	100	99.5	96.9	93.4	89.5			
90	58.1	56.9	55.9	54.1	54.0	55.1	55.7	57.0	56.5	59.0	61.0	62.5	62.6	61.6	59.7	58.0			
95	49.1	48.8	48.6	48.4	48.3	48.0	47.6	47.5	47.6	48.4	48.8	49.4	49.6	49.5	49.2	49.1			
100	47.2	47.2	47.2	47.1	46.9	46.6	46.1	45.8	45.7	46.0	46.3	46.9	47.1	47.1	47.0	47.1			
105	46.6	46.6	46.6	46.4	46.2	45.9	45.5	45.3	45.2	45.7	46.0	46.4	46.5	46.6	46.4	46.4			
110	46.0	45.9	45.9	45.7	45.4	45.3	44.8	44.8	44.8	45.1	45.3	46.0	46.2	46.0	45.8	45.9			
115	45.1	45.0	44.9	44.7	44.4	44.3	44.1	44.0	44.0	44.5	44.6	45.2	45.4	45.3	45.0	44.9			
120	44.0	43.9	43.9	43.7	43.5	43.3	43.1	43.3	43.3	43.8	43.9	44.2	44.3	44.4	44.0	43.8			
125	42.8	42.6	42.7	42.4	42.5	42.2	42.2	42.1	42.2	42.6	42.7	43.0	43.2	43.2	42.8	42.6			
130	41.6	41.3	41.4	41.1	41.1	41.1	40.8	40.9	40.8	41.5	41.4	41.8	41.8	41.7	41.7	41.2			
135	40.0	39.9	40.0	39.7	39.7	39.7	39.3	39.5	39.5	39.9	40.0	40.2	40.3	40.4	40.1	39.5			
140	38.7	38.5	38.6	38.4	38.4	38.5	37.9	38.2	38.1	38.5	38.3	38.7	38.7	38.9	38.2	38.0			
145	37.5	37.3	37.4	37.2	37.1	37.3	36.4	37.1	36.8	36.8	36.6	37.3	37.2	37.4	36.8	36.7			
150	36.1	36.1	36.3	36.1	36.2	36.0	35.5	36.3	35.7	35.6	35.8	36.0	35.9	36.1	35.4	35.4			
155	35.2	35.0	33.9	35.2	35.0	34.9	33.6	35.4	34.8	34.7	35.0	34.9	34.8	34.0	34.1	33.5			
160	34.1	30.2	32.7	34.1	33.4	33.8	32.5	31.0	33.8	34.0	33.6	33.3	32.8	29.5	32.7	32.2			
165	30.4	31.6	32.0	31.7	30.8	31.3	31.1	32.2	31.4	31.8	31.3	31.6	30.4	30.6	29.1	30.4			
170	27.6	27.7	27.6	28.0	27.6	28.1	28.2	28.5	27.1	27.2	26.9	26.9	27.6	26.5	26.7	26.0			
175	22.9	22.7	23.2	24.2	23.7	23.7	23.4	23.4	22.4	22.4	22.8	23.5	23.0	21.6	22.4	22.2			
180	28.0	28.0	29.0	28.4	28.5	27.4	28.3	28.9	26.5	26.4	26.5	27.4	27.4	26.6	26.6	26.6			

C Range: 0 - 360DEG
 C Interval: 22.5DEG
 Test Speed: HIGH
 Temperature:24.3DEG
 Operators:Carl
 Test Date:2023-01-28

γ Range: 0 - 180DEG
 γ Interval: 1.0DEG
 Test System:EVERFINE GO-R5000_V2 SYSTEM V2.0.351
 Humidity:49%
 Test Distance:2.532m [K=1.0000]
 Remarks: