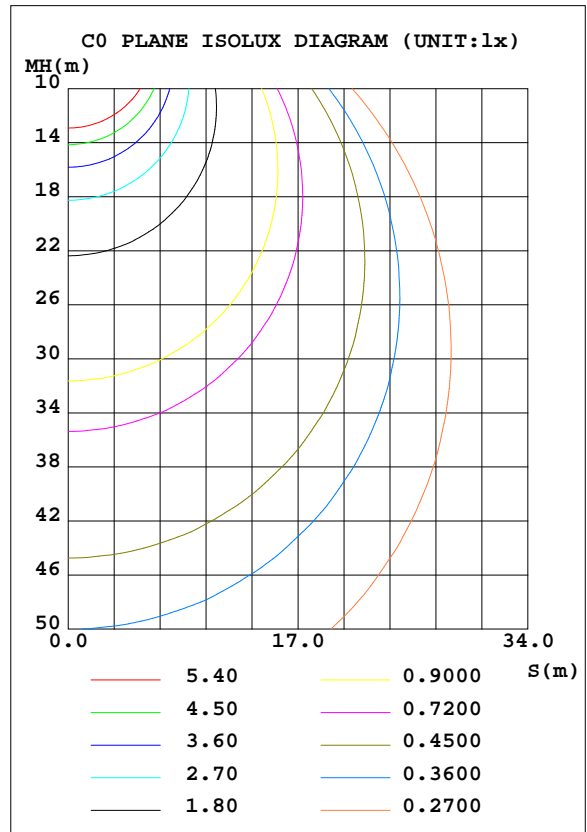
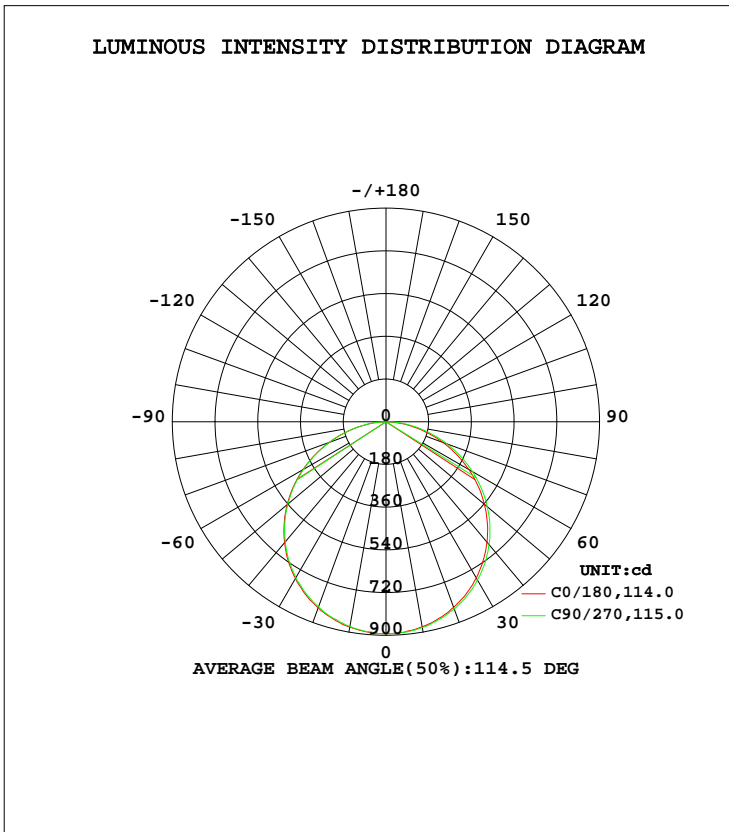


LUMINAIRE PHOTOMETRIC TEST REPORT

Test:U:120.10V I:0.2542A P:30.120W PF:0.9866 Freq:60.00Hz Lamp Flux:2625.96x1 lm		
NAME: ASD-MPR-18D32WH 5000K	TYPE: N/A	WEIGHT: N/A
SPEC.:LED Luminaires	DIM.: N/A	SERIAL No.: N/A
MFR.:ASD Lighting Corp	SUR.: N/A	Shielding Angle: N/A

DATA OF LAMP		PHOTOMETRIC DATA				Eff: 87.18 lm/W
MODEL	ASD-MPR-18D32WH 5000K	I <sub>max</sub> (cd)	894.5	S/MH(C0/180)	1.26	
NOMINAL POWER(W)	32W	LOR(%)	100.0	S/MH(C90/270)	1.28	
RATED VOLTAGE(V)	120	TOTAL FLUX(lm)	2626.0	η UP, DN(C0-180)	0.0,49.4	
NOMINAL FLUX(lm)	2625.96	CIE CLASS	DIRECT	η UP, DN(C180-360)	0.0,50.6	
LAMPS INSIDE	1	η up(%)	0.0	CIBSE SHR NOM	1.25	
TEST VOLTAGE(V)	120	η down(%)	100.0	CIBSE SHR MAX	1.35	



C Range: 0 - 360DEG  
 C Interval: 22.5DEG  
 Test Speed: HIGH  
 Temperature:25.2DEG  
 Operators:Water  
 Test Date:2024-08-28

γ Range: 0 - 180DEG  
 γ Interval: 1.0DEG  
 Test System:EVERFINE GO-R5000\_V2 SYSTEM V2.00.446  
 Humidity:48%  
 Test Distance:2.519m [K=1.0000]  
 Remarks:

ZONAL FLUX DIAGRAM

ZONAL FLUX DIAGRAM:

γ	C0	C45	C90	C135	C180	C225	C270	C315	γ	Φ zone	Φ total	%lum, lamp
10	878.3	878.0	875.2	876.2	877.2	880.6	880.4	882.1	0- 10	84.59	84.59	3.22,3.22
20	834.9	834.7	830.7	829.7	832.1	836.0	839.7	840.1	10- 20	242.9	327.5	12.5,12.5
30	762.9	761.2	759.7	756.0	760.7	766.1	769.9	770.9	20- 30	370.0	697.6	26.6,26.6
40	664.8	663.3	660.6	656.3	662.1	669.4	675.4	674.2	30- 40	449.2	1147	43.7,43.7
50	543.2	541.7	540.1	535.4	541.1	550.3	557.0	554.6	40- 50	469.3	1616	61.5,61.5
60	404.5	403.5	402.2	396.7	403.4	412.6	420.6	417.4	50- 60	427.5	2044	77.8,77.8
70	254.6	254.7	253.5	249.2	255.6	265.8	273.2	269.1	60- 70	330.5	2374	90.4,90.4
80	109.1	109.2	109.6	105.7	110.3	119.6	126.6	122.4	70- 80	196.0	2570	97.9,97.9
90	0	0	0	0	0	0	0	0	80- 90	55.85	2626	100,100
100	0	0	0	0	0	0	0	0	90-100	0	2626	100,100
110	0	0	0	0	0	0	0	0	100-110	0	2626	100,100
120	0	0	0	0	0	0	0	0	110-120	0	2626	100,100
130	0	0	0	0	0	0	0	0	120-130	0	2626	100,100
140	0	0	0	0	0	0	0	0	130-140	0	2626	100,100
150	0	0	0	0	0	0	0	0	140-150	0	2626	100,100
160	0	0	0	0	0	0	0	0	150-160	0	2626	100,100
170	0	0	0	0	0	0	0	0	160-170	0	2626	100,100
180	0	0	0	0	0	0	0	0	170-180	0	2626	100,100
DEG	LUMINOUS INTENSITY:cd									UNIT:lm		

Conical surface Flux(90deg): 1382.8 lm

%lum = 52.7%  
 %lamp = 52.7%

Conical surface Flux(120deg): 2043.6 lm

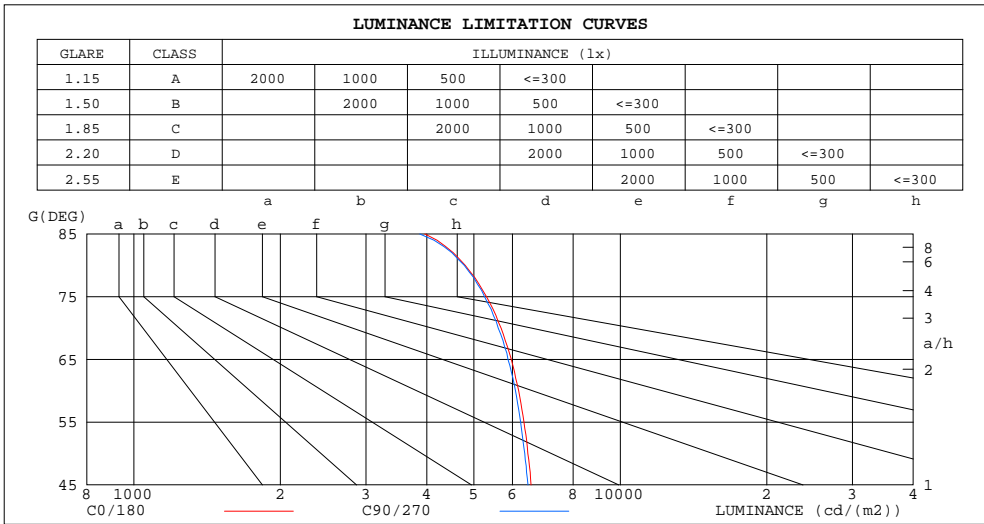
%lum = 77.8%  
 %lamp = 77.8%

C Range: 0 - 360DEG  
 C Interval: 22.5DEG  
 Test Speed: HIGH  
 Temperature:25.2DEG  
 Operators:Water  
 Test Date:2024-08-28

γ Range: 0 - 180DEG  
 γ Interval: 1.0DEG  
 Test System:EVERFINE GO-R5000\_V2 SYSTEM V2.00.446  
 Humidity:48%  
 Test Distance:2.519m [K=1.0000]  
 Remarks:

**LUMINANCE LIMITATION CURVES**

Test:U:120.10V I:0.2542A P:30.120W PF:0.9866 Freq:60.00Hz Lamp Flux:2625.96x1 lm		
NAME:ASD-MPR-18D32WH 5000K	TYPE: N/A	WEIGHT: N/A
SPEC.: LED Luminaires	DIM.: N/A	SERIAL No.: N/A
MFR.:ASD Lighting Corp	SUR.: N/A	Shielding Angle: N/A



LUMINANCE cd/(m2)		
G(DEG)	C0/180	C90/270
85	3966	3870
80	4799	4776
75	5309	5261
70	5688	5611
65	5969	5877
60	6181	6089
55	6339	6236
50	6456	6360
45	6554	6460

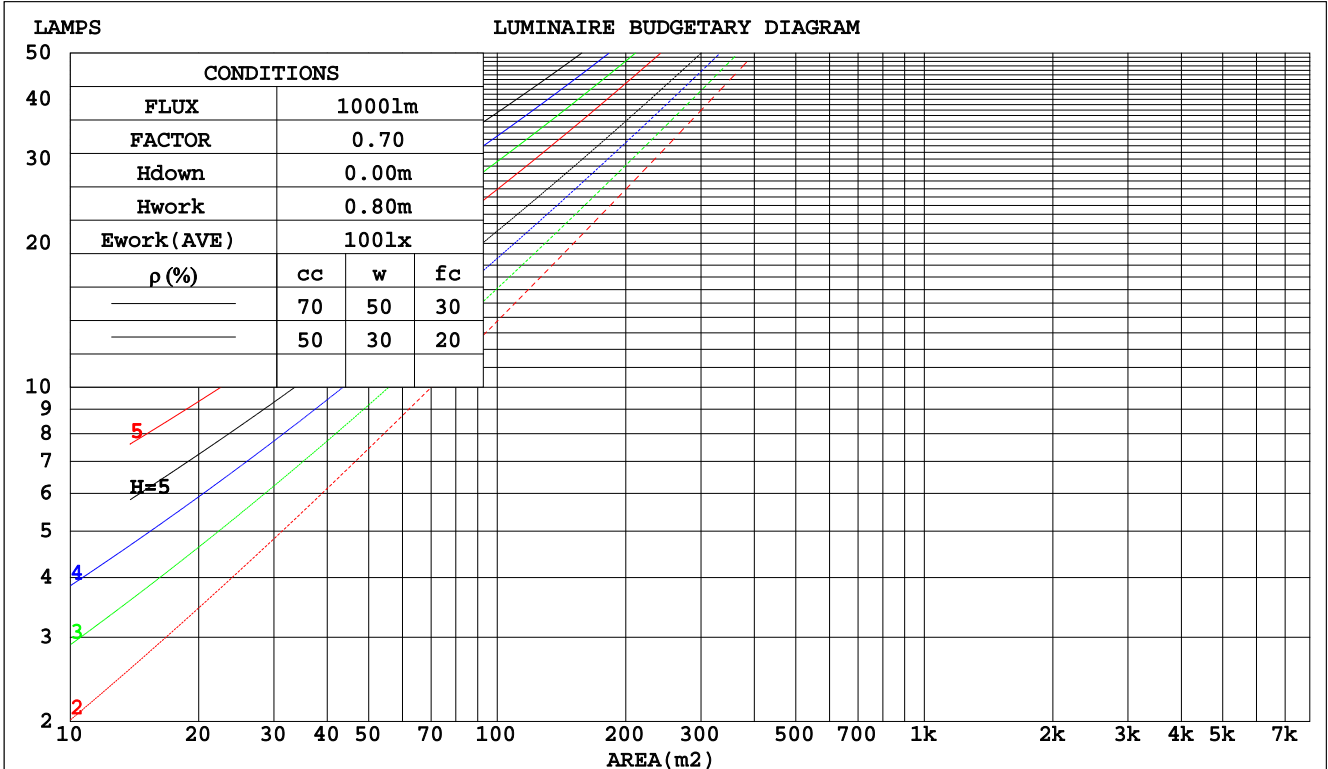
C Range: 0 - 360DEG  
 C Interval: 22.5DEG  
 Test Speed: HIGH  
 Temperature:25.2DEG  
 Operators:Water  
 Test Date:2024-08-28

γ Range: 0 - 180DEG  
 γ Interval: 1.0DEG  
 Test System:EVERFINE GO-R5000\_V2 SYSTEM V2.00.446  
 Humidity:48%  
 Test Distance:2.519m [K=1.0000]  
 Remarks:

CU AND LUMINAIRE BUDGETARY ESTIMATE DIAGRAM

Test:U:120.10V I:0.2542A P:30.120W PF:0.9866 Freq:60.00Hz Lamp Flux:2625.96x1 lm		
NAME: ASD-MPR-18D32WH 5000K	TYPE: N/A	WEIGHT: N/A
SPEC.:LED Luminaires	DIM.: N/A	SERIAL No.: N/A
MFR.:ASD Lighting Corp	SUR.: N/A	Shielding Angle: N/A

pcc	80%			70%			50%			30%			10%			0
	50%	30%	10%	50%	30%	10%	50%	30%	10%	50%	30%	10%	50%	30%	10%	0
pw																0
pfc	20%			20%			20%			20%			20%			0
RCR	RCR:Room Cavity Ratio      Coefficients of Utilization(CU)															
0.0	1.19	1.19	1.19	1.16	1.16	1.16	1.11	1.11	1.11	1.06	1.06	1.06	1.02	1.02	1.02	1.00
1.0	1.04	.99	.95	1.01	.97	.94	.97	.94	.91	.93	.90	.88	.89	.87	.85	.83
2.0	.90	.83	.77	.88	.82	.76	.85	.79	.74	.81	.77	.73	.78	.74	.71	.69
3.0	.79	.71	.64	.77	.70	.63	.74	.68	.62	.71	.66	.61	.69	.64	.60	.58
4.0	.70	.61	.54	.68	.60	.54	.66	.59	.53	.63	.57	.52	.61	.56	.51	.49
5.0	.62	.53	.46	.61	.52	.46	.59	.51	.46	.57	.50	.45	.55	.49	.45	.42
6.0	.56	.47	.40	.55	.46	.40	.53	.46	.40	.51	.45	.39	.50	.44	.39	.37
7.0	.51	.42	.36	.50	.41	.35	.48	.41	.35	.47	.40	.35	.45	.39	.35	.33
8.0	.46	.38	.32	.45	.37	.32	.44	.37	.31	.43	.36	.31	.42	.36	.31	.29
9.0	.42	.34	.28	.42	.34	.28	.41	.33	.28	.40	.33	.28	.38	.32	.28	.26
10.0	.39	.31	.26	.39	.31	.26	.38	.30	.26	.37	.30	.25	.36	.30	.25	.24



C Range: 0 - 360DEG  
 C Interval: 22.5DEG  
 Test Speed: HIGH  
 Temperature:25.2DEG  
 Operators:Water  
 Test Date:2024-08-28

γ Range: 0 - 180DEG  
 γ Interval: 1.0DEG  
 Test System:EVERFINE GO-R5000\_V2 SYSTEM V2.00.446  
 Humidity:48%  
 Test Distance:2.519m [K=1.0000]  
 Remarks:

WEC AND CCEC

Test:U:120.10V I:0.2542A P:30.120W PF:0.9866 Freq:60.00Hz Lamp Flux:2625.96x1 lm		
NAME: ASD-MPR-18D32WH 5000K	TYPE: N/A	WEIGHT: N/A
SPEC.:LED Luminaires	DIM.: N/A	SERIAL No.: N/A
MFR.:ASD Lighting Corp	SUR.: N/A	Shielding Angle: N/A

ρcc	80%			70%			50%			30%			10%			0
ρw	50%	30%	10%	50%	30%	10%	50%	30%	10%	50%	30%	10%	50%	30%	10%	0
ρfc	20%			20%			20%			20%			20%			0
RCR	RCR:Room Cavity Ratio						Wall Exitance Coefficients(WEC)									
0.0																
1.0	.316	.180	.057	.309	.176	.056	.295	.169	.054	.283	.163	.052	.272	.158	.051	
2.0	.296	.162	.050	.290	.160	.049	.278	.155	.048	.267	.150	.047	.257	.145	.046	
3.0	.273	.145	.044	.268	.143	.043	.257	.139	.042	.248	.136	.042	.239	.132	.041	
4.0	.252	.131	.038	.247	.129	.038	.238	.126	.038	.229	.123	.037	.221	.120	.037	
5.0	.232	.118	.034	.228	.117	.034	.220	.115	.034	.212	.112	.033	.205	.110	.033	
6.0	.215	.108	.031	.211	.107	.031	.204	.105	.030	.197	.103	.030	.191	.101	.030	
7.0	.200	.099	.028	.197	.098	.028	.190	.096	.028	.184	.094	.027	.178	.093	.027	
8.0	.187	.091	.026	.184	.091	.026	.178	.089	.025	.173	.087	.025	.167	.086	.025	
9.0	.175	.085	.024	.172	.084	.024	.167	.083	.023	.162	.081	.023	.158	.080	.023	
10.0	.164	.079	.022	.162	.078	.022	.157	.077	.022	.153	.076	.022	.149	.075	.021	

ρcc	80%			70%			50%			30%			10%			0
ρw	50%	30%	10%	50%	30%	10%	50%	30%	10%	50%	30%	10%	50%	30%	10%	0
ρfc	20%			20%			20%			20%			20%			0
RCR	RCR:Room Cavity Ratio						Ceiling Cavity Exitance Coefficients(CCEC)									
0.0	.190	.190	.190	.163	.163	.163	.111	.111	.111	.064	.064	.064	.020	.020	.020	
1.0	.181	.156	.134	.155	.134	.115	.106	.092	.080	.061	.053	.046	.019	.017	.015	
2.0	.173	.132	.097	.148	.114	.084	.101	.079	.059	.058	.046	.034	.019	.015	.011	
3.0	.165	.114	.074	.142	.099	.064	.097	.069	.045	.056	.040	.026	.018	.013	.009	
4.0	.157	.101	.058	.135	.087	.050	.093	.061	.035	.054	.036	.021	.017	.012	.007	
5.0	.150	.091	.047	.129	.078	.041	.089	.055	.029	.051	.032	.017	.017	.010	.006	
6.0	.143	.082	.039	.123	.071	.034	.085	.050	.024	.049	.029	.014	.016	.010	.005	
7.0	.136	.075	.033	.117	.065	.029	.081	.046	.020	.047	.027	.012	.015	.009	.004	
8.0	.129	.070	.029	.111	.060	.025	.077	.042	.018	.045	.025	.011	.015	.008	.003	
9.0	.123	.065	.025	.106	.056	.022	.074	.039	.016	.043	.023	.009	.014	.008	.003	
10.0	.118	.060	.022	.101	.052	.019	.070	.037	.014	.041	.022	.008	.013	.007	.003	

C Range: 0 - 360DEG  
 C Interval: 22.5DEG  
 Test Speed: HIGH  
 Temperature:25.2DEG  
 Operators:Water  
 Test Date:2024-08-28

γ Range: 0 - 180DEG  
 γ Interval: 1.0DEG  
 Test System:EVERFINE GO-R5000\_V2 SYSTEM V2.00.446  
 Humidity:48%  
 Test Distance:2.519m [K=1.0000]  
 Remarks:

UGR(Unified Glare Rating) Table

Test:U:120.10V I:0.2542A P:30.120W PF:0.9866 Freq:60.00Hz Lamp Flux:2625.96x1 lm		
NAME:ASD-MPR-18D32WH 5000K	TYPE: N/A	WEIGHT: N/A
SPEC.:LED Luminaires	DIM.: N/A	SERIAL No.: N/A
MFR.: ASD Lighting Corp	SUR.: N/A	Shielding Angle: N/A

ceiling/cavity	0.7	0.7	0.5	0.5	0.3	0.7	0.7	0.5	0.5	0.3
walls	0.5	0.3	0.5	0.3	0.3	0.5	0.3	0.5	0.3	0.3
working plane	0.2	0.2	0.2	0.2	0.2	0.2	0.2	0.2	0.2	0.2
Room dimensions	Viewed crosswise					Viewed endwise				
x = 2H y = 2H	15.9	17.5	16.2	17.7	17.9	15.9	17.4	16.2	17.6	17.8
3H	17.5	18.9	17.8	19.2	19.4	17.4	18.9	17.7	19.1	19.3
4H	18.1	19.5	18.4	19.7	20.0	18.1	19.4	18.4	19.7	19.9
6H	18.6	19.8	18.9	20.1	20.4	18.5	19.8	18.9	20.1	20.4
8H	18.7	19.9	19.1	20.2	20.5	18.7	19.9	19.0	20.2	20.5
12H	18.8	20.0	19.1	20.3	20.6	18.7	19.9	19.1	20.2	20.5
4H 2H	16.6	17.9	16.9	18.2	18.4	16.5	17.9	16.8	18.1	18.4
3H	18.3	19.5	18.7	19.8	20.1	18.3	19.4	18.6	19.7	20.0
4H	19.0	20.1	19.4	20.5	20.8	19.0	20.1	19.4	20.4	20.8
6H	19.6	20.6	20.0	20.9	21.3	19.6	20.6	20.0	20.9	21.3
8H	19.8	20.7	20.2	21.1	21.5	19.8	20.7	20.2	21.1	21.5
12H	19.9	20.8	20.4	21.2	21.6	19.9	20.8	20.4	21.1	21.5
8H 4H	19.3	20.2	19.7	20.6	21.0	19.3	20.2	19.7	20.6	20.9
6H	20.1	20.8	20.5	21.2	21.6	20.0	20.8	20.5	21.2	21.6
8H	20.3	21.0	20.8	21.4	21.9	20.3	21.0	20.8	21.4	21.9
12H	20.5	21.1	21.0	21.6	22.0	20.5	21.1	21.0	21.5	22.0
12H 4H	19.3	20.2	19.8	20.6	21.0	19.3	20.1	19.7	20.5	20.9
6H	20.1	20.8	20.6	21.2	21.7	20.1	20.8	20.6	21.2	21.6
8H	20.4	21.0	20.9	21.5	21.9	20.4	21.0	20.9	21.4	21.9
Variations with the observer position at spacings(CIE Pub.117):										
S = 1.0H	+ 0.1 / - 0.2					+ 0.1 / - 0.2				
1.5H	+ 0.2 / - 0.3					+ 0.2 / - 0.3				
2.0H	+ 0.2 / - 0.3					+ 0.1 / - 0.3				

CIE Pub.117, 2626 lm Total Lamp Luminous Flux Correct (8log(F/F0) = 3.4)  
Area: 0.131958 m2

C Range: 0 - 360DEG  
C Interval: 22.5DEG  
Test Speed: HIGH  
Temperature:25.2DEG  
Operators:Water  
Test Date:2024-08-28

γ Range: 0 - 180DEG  
γ Interval: 1.0DEG  
Test System:EVERFINE GO-R5000\_V2 SYSTEM V2.00.446  
Humidity:48%  
Test Distance:2.519m [K=1.0000]  
Remarks:

**UTILIZATION FACTORS TABLE**

Test:U:120.10V I:0.2542A P:30.120W PF:0.9866 Freq:60.00Hz Lamp Flux:2625.96x1 lm		
NAME: ASD-MPR-18D32WH 5000K	TYPE: N/A	WEIGHT: N/A
SPEC.:LED Luminaires	DIM.: N/A	SERIAL No.: N/A
MFR.: ASD Lighting Corp	SUR.: N/A	Shielding Angle: N/A

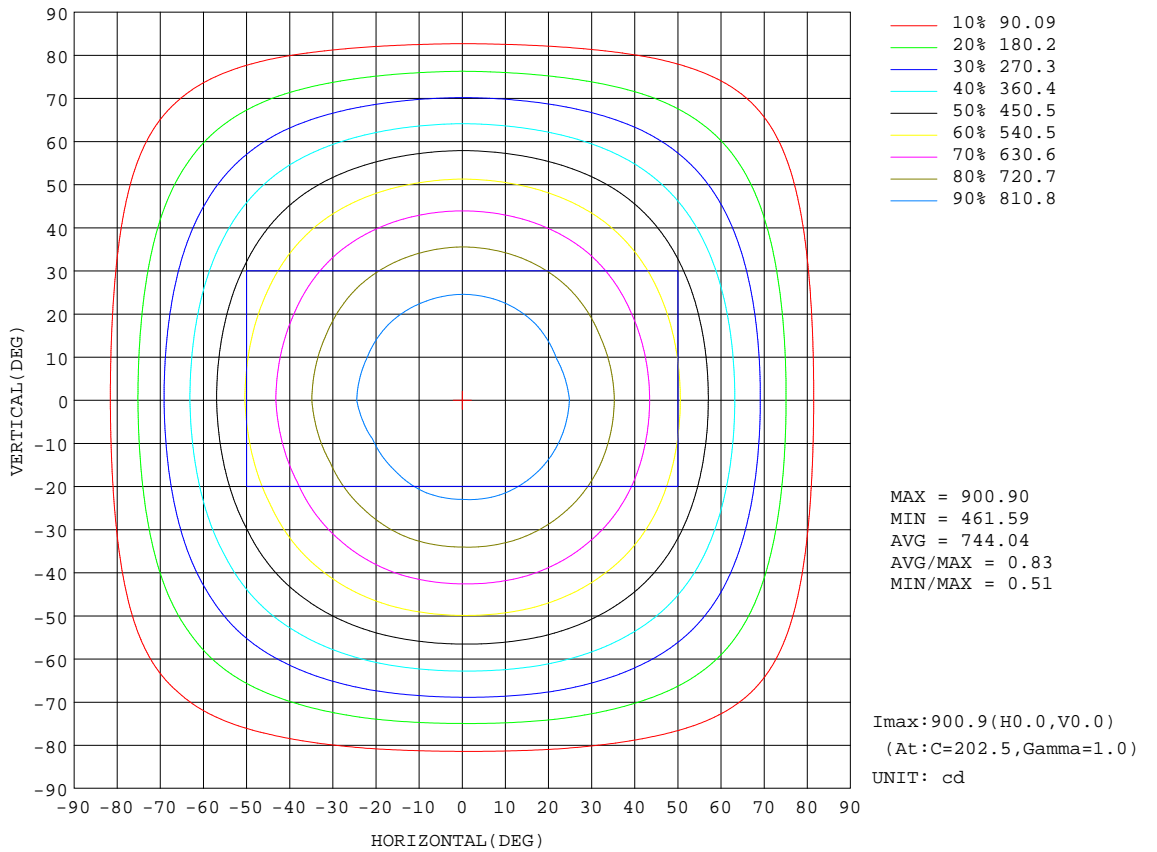
REFLECTANCE										
Ceiling	0.8	0.8	0.8	0.7	0.7	0.7	0.5	0.5	0.5	0
Walls	0.7	0.5	0.3	0.7	0.5	0.3	0.7	0.5	0.3	0
Working plane	0.2	0.2	0.2	0.2	0.2	0.2	0.2	0.2	0.2	0
ROOM INDEX	UTILIZATION FACTORS(PERCENT) $k(RI) \times RCR = 5$									
k = 0.60	57	45	38	56	45	38	55	45	38	31
0.80	67	55	48	66	55	48	64	54	47	40
1.00	75	64	57	74	64	57	72	65	56	49
1.25	83	72	65	81	71	64	78	70	63	56
1.50	88	78	70	86	77	70	83	75	69	61
2.00	95	86	79	93	85	78	89	82	77	69
2.50	98	91	84	96	89	84	93	87	82	73
3.00	102	95	89	100	93	88	96	90	86	77
4.00	106	100	95	104	98	94	99	95	91	82
5.00	108	103	99	106	102	98	101	98	95	86
ROOM INDEX	UF(total)									Direct
According to DIN EN 13032-2 2004			Suspended				SHRNOM = 1.25			

C Range: 0 - 360DEG  
 C Interval: 22.5DEG  
 Test Speed: HIGH  
 Temperature:25.2DEG  
 Operators:Water  
 Test Date:2024-08-28

$\gamma$  Range: 0 - 180DEG  
 $\gamma$  Interval: 1.0DEG  
 Test System:EVERFINE GO-R5000\_V2 SYSTEM V2.00.446  
 Humidity:48%  
 Test Distance:2.519m [K=1.0000]  
 Remarks:

**ISOCANDELA DIAGRAM**

Test:U:120.10V I:0.2542A P:30.120W PF:0.9866 Freq:60.00Hz Lamp Flux:2625.96x1 lm		
NAME: ASD-MPR-18D32WH 5000K	TYPE: N/A	WEIGHT: N/A
SPEC.:LED Luminaires	DIM.: N/A	SERIAL No.: N/A
MFR.: ASD Lighting Corp	SUR.: N/A	Shielding Angle: N/A



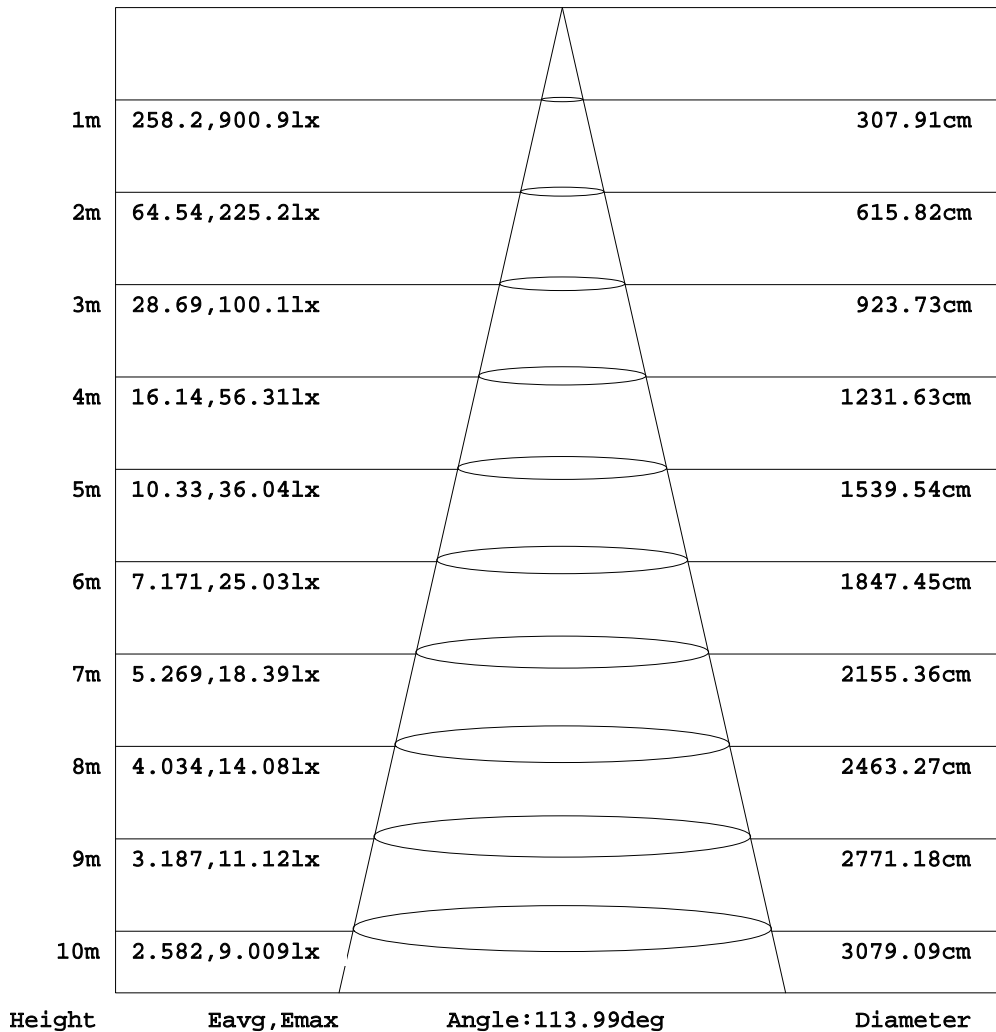
C Range: 0 - 360DEG  
 C Interval: 22.5DEG  
 Test Speed: HIGH  
 Temperature: 25.2DEG  
 Operators: Water  
 Test Date: 2024-08-28

γ Range: 0 - 180DEG  
 γ Interval: 1.0DEG  
 Test System: EVERFINE GO-R5000\_V2 SYSTEM V2.00.446  
 Humidity: 48%  
 Test Distance: 2.519m [K=1.0000]  
 Remarks:

**AAI Figure**

Test:U:120.10V I:0.2542A P:30.120W PF:0.9866 Freq:60.00Hz Lamp Flux:2625.96x1 lm		
NAME: ASD-MPR-18D32WH 5000K	TYPE: N/A	WEIGHT: N/A
SPEC.:LED Luminaires	DIM.: N/A	SERIAL No.: N/A
MFR.:ASD Lighting Corp	SUR.: N/A	Shielding Angle: N/A

Flux out:1923 lm



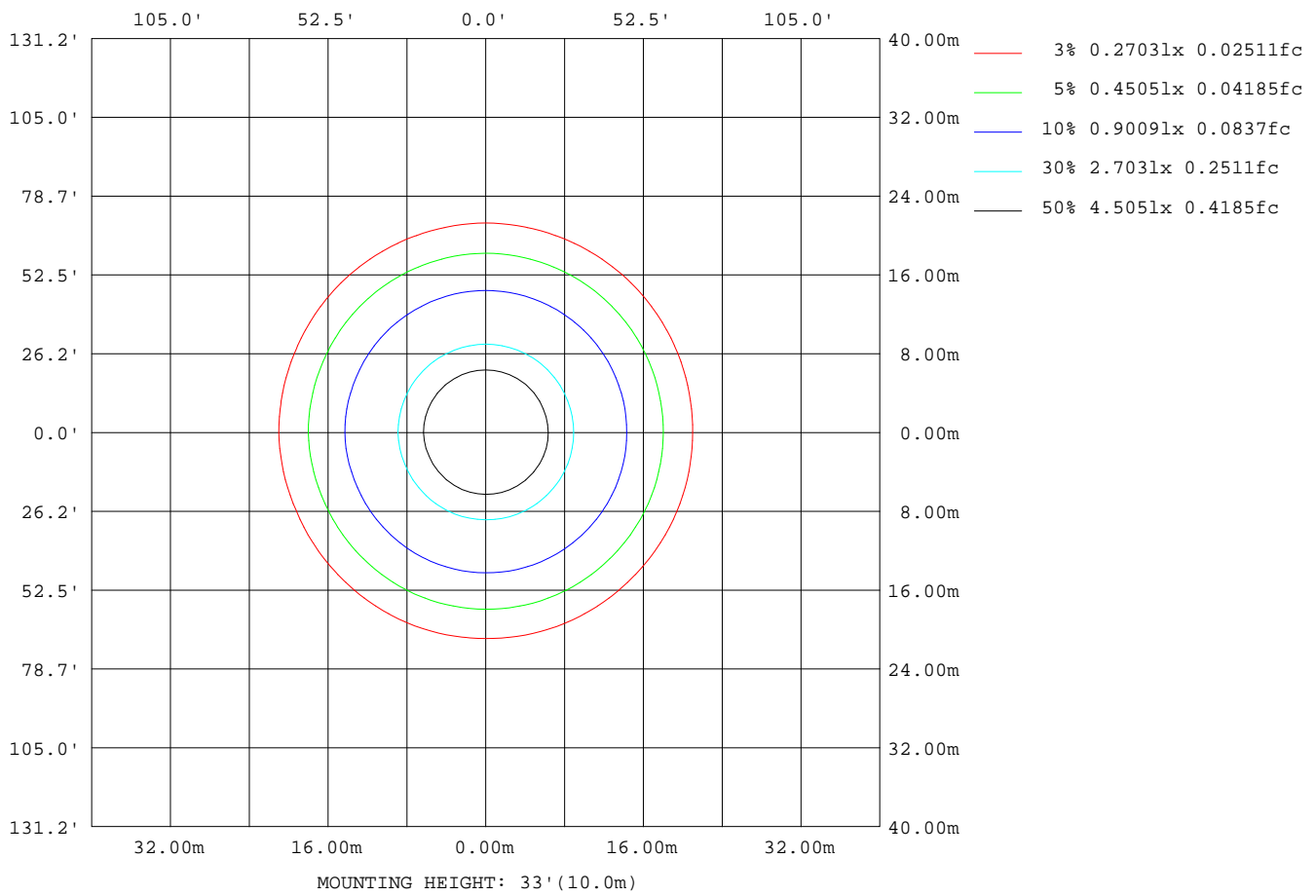
Note:The Curves indicate the illuminated area and the average illumination when the luminaire is at different distance.

C Range: 0 - 360DEG  
C Interval: 22.5DEG  
Test Speed: HIGH  
Temperature:25.2DEG  
Operators:Water  
Test Date:2024-08-28

γ Range: 0 - 180DEG  
γ Interval: 1.0DEG  
Test System:EVERFINE GO-R5000\_V2 SYSTEM V2.00.446  
Humidity:48%  
Test Distance:2.519m [K=1.0000]  
Remarks:

**ISOLUX DIAGRAM**

Test:U:120.10V I:0.2542A P:30.120W PF:0.9866 Freq:60.00Hz Lamp Flux:2625.96x1 lm		
NAME:ASD-MPR-18D32WH 5000K	TYPE: N/A	WEIGHT: N/A
SPEC.:LED Luminaires	DIM.: N/A	SERIAL No.: N/A
MFR.:ASD Lighting Corp	SUR.: N/A	Shielding Angle: N/A



C Range: 0 - 360DEG  
 C Interval: 22.5DEG  
 Test Speed: HIGH  
 Temperature:25.2DEG  
 Operators:Water  
 Test Date:2024-08-28

γ Range: 0 - 180DEG  
 γ Interval: 1.0DEG  
 Test System:EVERFINE GO-R5000\_V2 SYSTEM V2.00.446  
 Humidity:48%  
 Test Distance:2.519m [K=1.0000]  
 Remarks:

LED Avg.L Report

Test:U:120.10V I:0.2542A P:30.120W PF:0.9866 Freq:60.00Hz Lamp Flux:2625.96x1 lm		
NAME:ASD-MPR-18D32WH 5000K	TYPE: N/A	WEIGHT: N/A
SPEC.:LED Luminaires	DIM.: N/A	SERIAL No.: N/A
MFR.:ASD Lighting Corp	SUR.: N/A	Shielding Angle: N/A

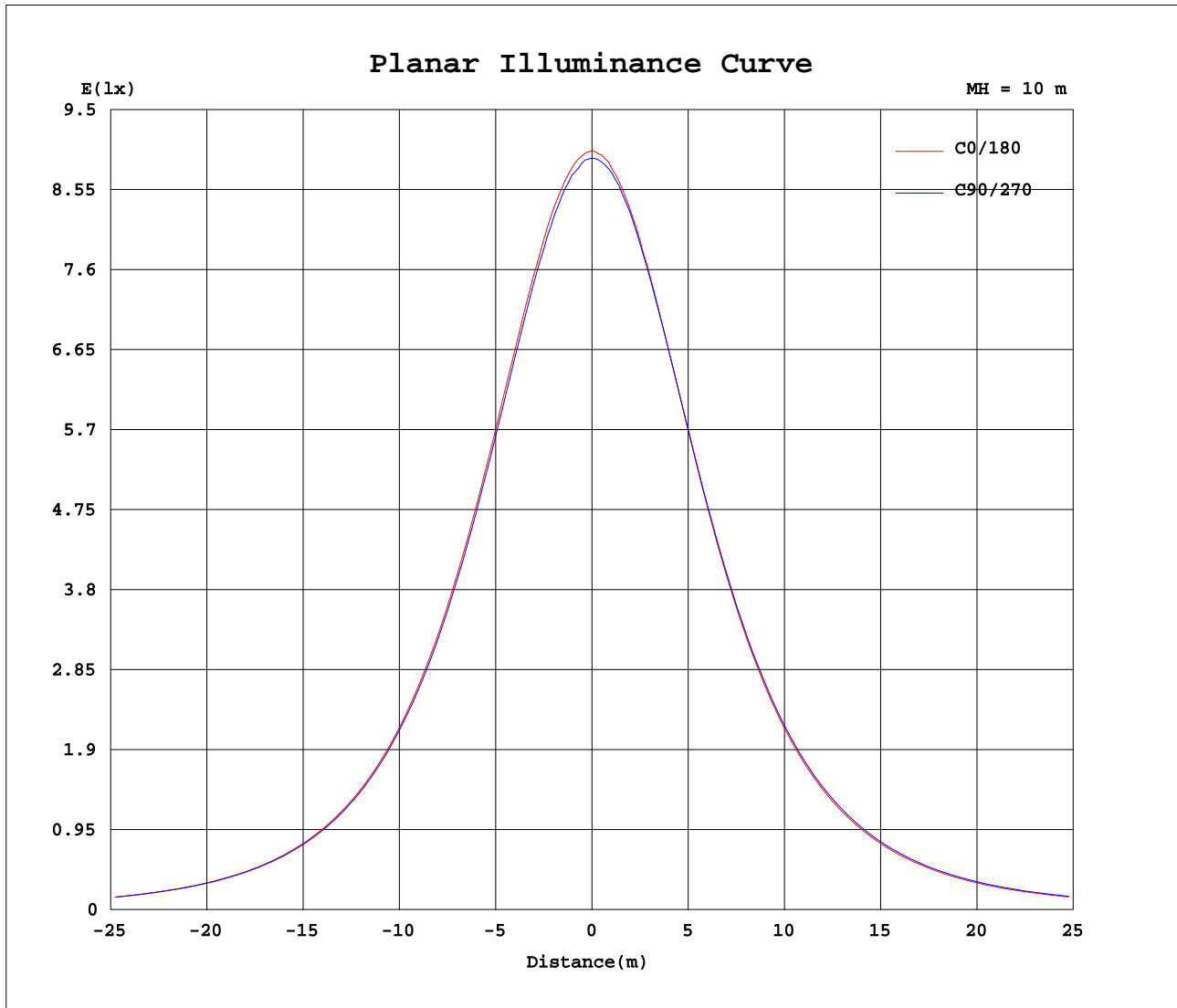
AvgL	cd/m2
L_0~180(65)av	5918
L_0~180(75)av	5289
L_0~180(85)av	4003
L_90~270(65)av	6062
L_90~270(75)av	5542
L_90~270(85)av	4549
L_45(65)av	5991
L_45(75)av	5429
L_45(85)av	4312

Standard: GB/T 29293-2012

C Range: 0 - 360DEG  
 C Interval: 22.5DEG  
 Test Speed: HIGH  
 Temperature:25.2DEG  
 Operators:Water  
 Test Date:2024-08-28

γ Range: 0 - 180DEG  
 γ Interval: 1.0DEG  
 Test System:EVERFINE GO-R5000\_V2 SYSTEM V2.00.446  
 Humidity:48%  
 Test Distance:2.519m [K=1.0000]  
 Remarks:

**Planar Illuminance Curve**



C Range: 0 - 360DEG  
 C Interval: 22.5DEG  
 Test Speed: HIGH  
 Temperature: 25.2DEG  
 Operators: Water  
 Test Date: 2024-08-28

$\gamma$  Range: 0 - 180DEG  
 $\gamma$  Interval: 1.0DEG  
 Test System: EVERFINE GO-R5000\_V2 SYSTEM V2.00.446  
 Humidity: 48%  
 Test Distance: 2.519m [K=1.0000]  
 Remarks:

LUMINOUS DISTRIBUTION INTENSITY DATA

Test:U:120.10V I:0.2542A P:30.120W PF:0.9866 Freq:60.00Hz Lamp Flux:2625.96x1 lm		
NAME:ASD-MPR-18D32WH 5000K	TYPE: N/A	WEIGHT: N/A
SPEC.:LED Luminaires	DIM.: N/A	SERIAL No.: N/A
MFR.: ASD Lighting Corp	SUR.: N/A	Shielding Angle: N/A

Table--1

UNIT: cd

C(DEG) γ (DEG)	0	22.5	45	67.5	90	112.5	135	157.5	180	202.5	225	247.5	270	292.5	315	337.5			
0	894	894	894	894	894	894	894	894	894	894	894	894	894	894	894	894			
5	890	891	890	891	887	889	888	888	890	891	889	892	891	891	892	891			
10	878	880	878	878	875	876	876	876	877	879	881	880	880	881	882	880			
15	860	861	861	859	857	858	855	857	858	860	862	864	863	864	864	864			
20	835	837	835	834	831	831	830	831	832	834	836	838	840	841	840	838			
25	803	804	801	800	798	798	796	797	800	802	805	807	809	809	809	807			
30	763	764	761	761	760	758	756	757	761	762	766	768	770	771	771	769			
35	717	718	716	715	714	712	709	709	714	715	721	724	727	726	726	723			
40	665	666	663	665	661	661	656	657	662	665	669	673	675	676	674	671			
45	607	608	606	606	603	602	598	598	604	606	613	616	619	619	618	613			
50	543	545	542	543	540	539	535	535	541	544	550	554	557	556	555	551			
55	476	477	475	476	473	471	468	467	474	476	483	487	491	490	488	484			
60	404	406	404	404	402	401	397	397	403	406	413	416	421	419	417	413			
65	330	331	329	331	328	328	323	323	330	332	340	344	348	346	344	339			
70	255	256	255	257	254	254	249	249	256	258	266	270	273	271	269	264			
75	180	181	180	182	180	180	176	176	181	184	191	195	199	197	195	189			
80	109	110	109	111	110	109	106	105	110	113	120	124	127	125	122	117			
85	45.2	45.2	44.7	46.2	44.6	44.8	42.2	41.7	46.8	49.3	54.7	57.6	60.1	59.5	56.9	52.4			
90	0.00	0.00	0.00	0.00	0.00	0.00	0.00	0.00	0.00	0.00	0.00	0.00	0.00	0.00	0.00	0.00			
95	0.00	0.00	0.00	0.00	0.00	0.00	0.00	0.00	0.00	0.00	0.00	0.00	0.00	0.00	0.00	0.00			
100	0.00	0.00	0.00	0.00	0.00	0.00	0.00	0.00	0.00	0.00	0.00	0.00	0.00	0.00	0.00	0.00			
105	0.00	0.00	0.00	0.00	0.00	0.00	0.00	0.00	0.00	0.00	0.00	0.00	0.00	0.00	0.00	0.00			
110	0.00	0.00	0.00	0.00	0.00	0.00	0.00	0.00	0.00	0.00	0.00	0.00	0.00	0.00	0.00	0.00			
115	0.00	0.00	0.00	0.00	0.00	0.00	0.00	0.00	0.00	0.00	0.00	0.00	0.00	0.00	0.00	0.00			
120	0.00	0.00	0.00	0.00	0.00	0.00	0.00	0.00	0.00	0.00	0.00	0.00	0.00	0.00	0.00	0.00			
125	0.00	0.00	0.00	0.00	0.00	0.00	0.00	0.00	0.00	0.00	0.00	0.00	0.00	0.00	0.00	0.00			
130	0.00	0.00	0.00	0.00	0.00	0.00	0.00	0.00	0.00	0.00	0.00	0.00	0.00	0.00	0.00	0.00			
135	0.00	0.00	0.00	0.00	0.00	0.00	0.00	0.00	0.00	0.00	0.00	0.00	0.00	0.00	0.00	0.00			
140	0.00	0.00	0.00	0.00	0.00	0.00	0.00	0.00	0.00	0.00	0.00	0.00	0.00	0.00	0.00	0.00			
145	0.00	0.00	0.00	0.00	0.00	0.00	0.00	0.00	0.00	0.00	0.00	0.00	0.00	0.00	0.00	0.00			
150	0.00	0.00	0.00	0.00	0.00	0.00	0.00	0.00	0.00	0.00	0.00	0.00	0.00	0.00	0.00	0.00			
155	0.00	0.00	0.00	0.00	0.00	0.00	0.00	0.00	0.00	0.00	0.00	0.00	0.00	0.00	0.00	0.00			
160	0.00	0.00	0.00	0.00	0.00	0.00	0.00	0.00	0.00	0.00	0.00	0.00	0.00	0.00	0.00	0.00			
165	0.00	0.00	0.00	0.00	0.00	0.00	0.00	0.00	0.00	0.00	0.00	0.00	0.00	0.00	0.00	0.00			
170	0.00	0.00	0.00	0.00	0.00	0.00	0.00	0.00	0.00	0.00	0.00	0.00	0.00	0.00	0.00	0.00			
175	0.00	0.00	0.00	0.00	0.00	0.00	0.00	0.00	0.00	0.00	0.00	0.00	0.00	0.00	0.00	0.00			
180	0.00	0.00	0.00	0.00	0.00	0.00	0.00	0.00	0.00	0.00	0.00	0.00	0.00	0.00	0.00	0.00			

C Range: 0 - 360DEG  
 C Interval: 22.5DEG  
 Test Speed: HIGH  
 Temperature:25.2DEG  
 Operators:Water  
 Test Date:2024-08-28

γ Range: 0 - 180DEG  
 γ Interval: 1.0DEG  
 Test System:EVERFINE GO-R5000\_V2 SYSTEM V2.00.446  
 Humidity:48%  
 Test Distance:2.519m [K=1.0000]  
 Remarks: