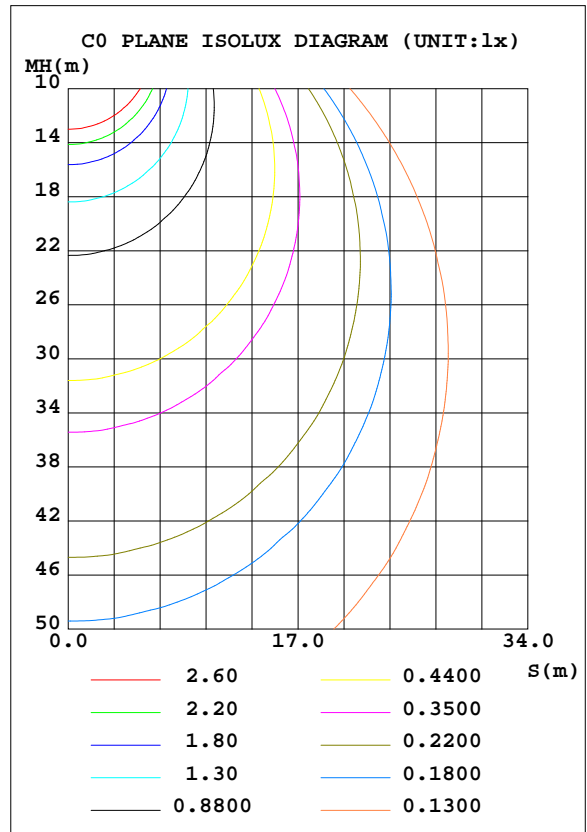
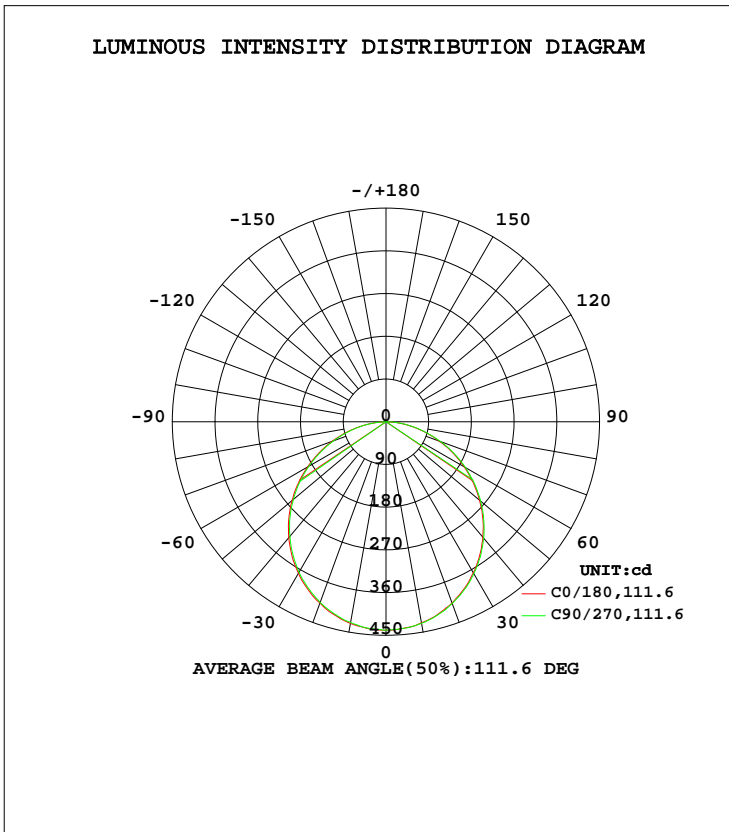


LUMINAIRE PHOTOMETRIC TEST REPORT

Test:U:120.09V I:0.1725A P:19.290W PF:0.9312 Freq:60.00Hz Lamp Flux:1247.44x1 lm		
NAME:ASD-MPR-9N18WH-MS	TYPE: N/A	WEIGHT: N/A
SPEC.:5000K	DIM.: N/A	SERIAL No.: N/A
MFR.: ASD Lighting Corp	SUR.: N/A	Shielding Angle: N/A

DATA OF LAMP		PHOTOMETRIC DATA Eff: 64.67 lm/W			
MODEL	ASD-MPR-9N18WH-MS	I _{max} (cd)	439.9	S/MH(C0/180)	1.25
NOMINAL POWER(W)	18	LOR(%)	100.0	S/MH(C90/270)	1.25
RATED VOLTAGE(V)	120	TOTAL FLUX(lm)	1247.4	η UP, DN(C0-180)	0.0,49.6
NOMINAL FLUX(lm)	1247.44	CIE CLASS	DIRECT	η UP, DN(C180-360)	0.0,50.4
LAMPS INSIDE	1	η up(%)	0.0	CIBSE SHR NOM	1.25
TEST VOLTAGE(V)	120	η down(%)	100.0	CIBSE SHR MAX	1.35



C Range: 0 - 360DEG
 C Interval: 22.5DEG
 Test Speed: HIGH
 Temperature:25.2DEG
 Operators:Water
 Test Date:2024-09-30

γ Range: 0 - 180DEG
 γ Interval: 1.0DEG
 Test System:EVERFINE GO-R5000_V2 SYSTEM V2.00.446
 Humidity:46%
 Test Distance:2.519m [K=1.0000]
 Remarks:

ZONAL FLUX DIAGRAM

ZONAL FLUX DIAGRAM:

γ	C0	C45	C90	C135	C180	C225	C270	C315	γ	Φ zone	Φ total	%lum, lamp
10	431.3	430.8	429.5	429.9	429.9	430.9	431.1	432.1	0- 10	41.52	41.52	3.33,3.33
20	406.2	406.2	405.1	404.6	406.7	407.1	407.7	408.9	10- 20	118.7	160.2	12.8,12.8
30	368.9	367.3	366.2	365.8	367.8	368.5	370.0	371.3	20- 30	179.3	339.5	27.2,27.2
40	318.6	316.7	315.1	315.5	317.3	318.1	320.3	321.7	30- 40	215.4	555.0	44.5,44.5
50	257.9	256.4	254.9	254.9	257.4	258.1	260.1	262.4	40- 50	222.9	777.8	62.4,62.4
60	191.1	188.6	187.9	187.9	190.3	190.5	193.3	195.2	50- 60	201.0	978.8	78.5,78.5
70	120.5	117.8	117.4	118.0	119.4	119.1	122.0	124.2	60- 70	153.8	1133	90.8,90.8
80	52.63	50.35	50.37	50.85	52.86	52.55	54.80	56.66	70- 80	90.34	1223	98,98
90	0	0	0	0	0	0	0	0	80- 90	24.49	1247	100,100
100	0	0	0	0	0	0	0	0	90-100	0	1247	100,100
110	0	0	0	0	0	0	0	0	100-110	0	1247	100,100
120	0	0	0	0	0	0	0	0	110-120	0	1247	100,100
130	0	0	0	0	0	0	0	0	120-130	0	1247	100,100
140	0	0	0	0	0	0	0	0	130-140	0	1247	100,100
150	0	0	0	0	0	0	0	0	140-150	0	1247	100,100
160	0	0	0	0	0	0	0	0	150-160	0	1247	100,100
170	0	0	0	0	0	0	0	0	160-170	0	1247	100,100
180	0	0	0	0	0	0	0	0	170-180	0	1247	100,100
DEG	LUMINOUS INTENSITY:cd									UNIT:lm		

Conical surface Flux(90deg): 667.37 lm

%lum = 53.5%
 %lamp = 53.5%

Conical surface Flux(120deg): 978.82 lm

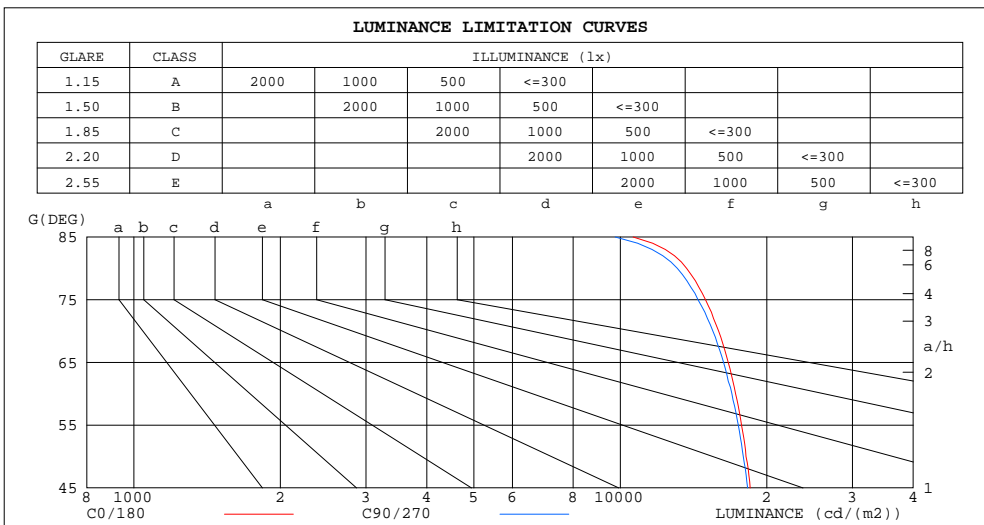
%lum = 78.5%
 %lamp = 78.5%

C Range: 0 - 360DEG
 C Interval: 22.5DEG
 Test Speed: HIGH
 Temperature:25.2DEG
 Operators:Water
 Test Date:2024-09-30

γ Range: 0 - 180DEG
 γ Interval: 1.0DEG
 Test System:EVERFINE GO-R5000_V2 SYSTEM V2.00.446
 Humidity:46%
 Test Distance:2.519m [K=1.0000]
 Remarks:

LUMINANCE LIMITATION CURVES

Test:U:120.09V I:0.1725A P:19.290W PF:0.9312 Freq:60.00Hz Lamp Flux:1247.44x1 lm		
NAME: ASD-MPR-9N18WH-MS	TYPE: N/A	WEIGHT: N/A
SPEC.:5000K	DIM.: N/A	SERIAL No.: N/A
MFR.: ASD Lighting Corp	SUR.: N/A	Shielding Angle: N/A



LUMINANCE cd/(m2)		
G (DEG)	C0/180	C90/270
85	10628	9762
80	13691	13095
75	14967	14443
70	15920	15499
65	16663	16304
60	17263	16962
55	17751	17475
50	18124	17901
45	18494	18266

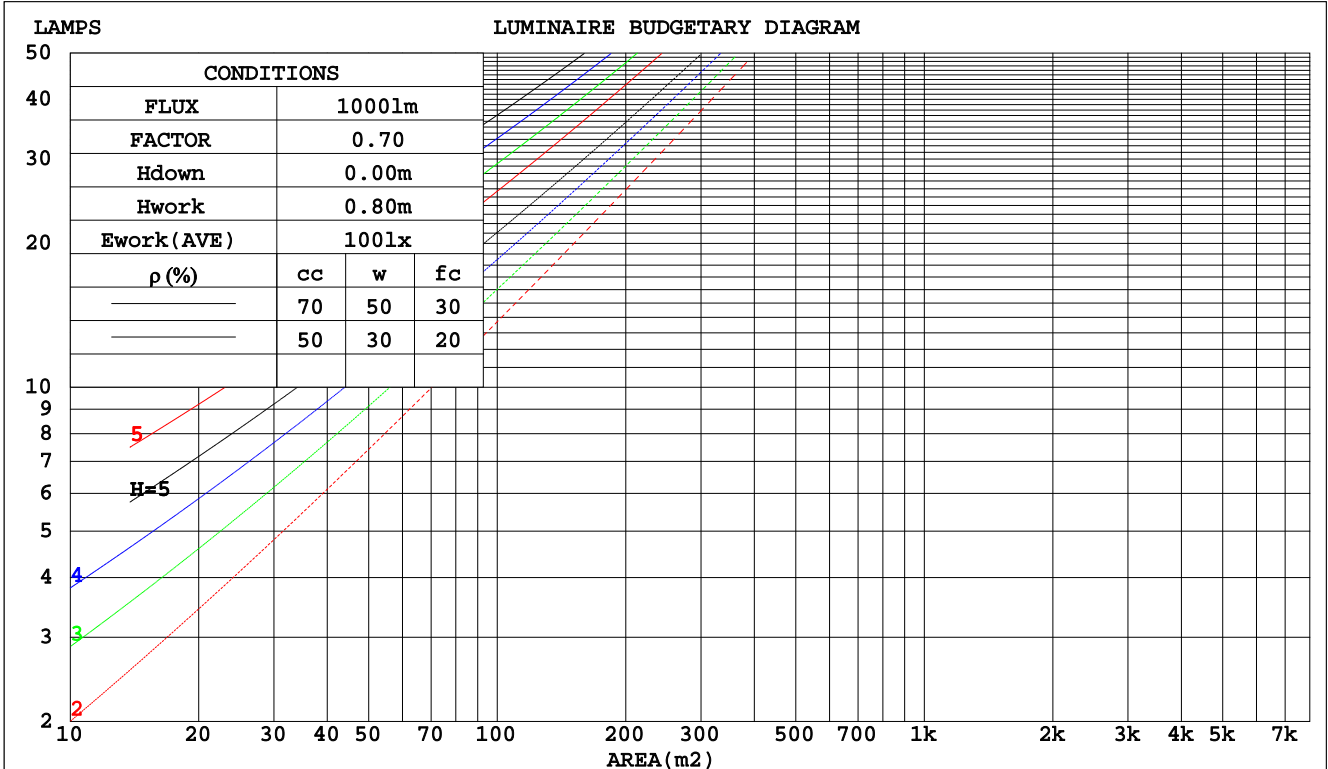
C Range: 0 - 360DEG
 C Interval: 22.5DEG
 Test Speed: HIGH
 Temperature: 25.2DEG
 Operators: Water
 Test Date: 2024-09-30

γ Range: 0 - 180DEG
 γ Interval: 1.0DEG
 Test System: EVERFINE GO-R5000_V2 SYSTEM V2.00.446
 Humidity: 46%
 Test Distance: 2.519m [K=1.0000]
 Remarks:

CU AND LUMINAIRE BUDGETARY ESTIMATE DIAGRAM

Test:U:120.09V I:0.1725A P:19.290W PF:0.9312 Freq:60.00Hz Lamp Flux:1247.44x1 lm		
NAME: ASD-MPR-9N18WH-MS	TYPE: N/A	WEIGHT: N/A
SPEC.:5000K	DIM.: N/A	SERIAL No.: N/A
MFR.:ASD Lighting Corp	SUR.: N/A	Shielding Angle: N/A

pcc	80%			70%			50%			30%			10%			0
	50%	30%	10%	50%	30%	10%	50%	30%	10%	50%	30%	10%	50%	30%	10%	0
pw																0
pfc	20%			20%			20%			20%			20%			0
RCR	RCR:Room Cavity Ratio															
	Coefficients of Utilization(CU)															
0.0	1.19	1.19	1.19	1.16	1.16	1.16	1.11	1.11	1.11	1.06	1.06	1.06	1.02	1.02	1.02	1.00
1.0	1.04	.99	.96	1.01	.98	.94	.97	.94	.91	.93	.91	.88	.90	.88	.86	.83
2.0	.90	.83	.78	.88	.82	.77	.85	.79	.75	.82	.77	.73	.79	.75	.72	.69
3.0	.79	.71	.64	.78	.70	.64	.75	.68	.63	.72	.66	.62	.69	.65	.60	.58
4.0	.70	.61	.54	.69	.61	.54	.66	.59	.53	.64	.58	.53	.62	.56	.52	.50
5.0	.63	.54	.47	.61	.53	.47	.59	.52	.46	.57	.51	.46	.56	.50	.45	.43
6.0	.56	.47	.41	.55	.47	.41	.54	.46	.40	.52	.45	.40	.50	.44	.40	.38
7.0	.51	.42	.36	.50	.42	.36	.49	.41	.36	.47	.40	.35	.46	.40	.35	.33
8.0	.47	.38	.32	.46	.38	.32	.45	.37	.32	.43	.37	.32	.42	.36	.31	.30
9.0	.43	.35	.29	.42	.34	.29	.41	.34	.29	.40	.33	.29	.39	.33	.28	.27
10.0	.39	.32	.26	.39	.31	.26	.38	.31	.26	.37	.30	.26	.36	.30	.26	.24



C Range: 0 - 360DEG
 C Interval: 22.5DEG
 Test Speed: HIGH
 Temperature:25.2DEG
 Operators:Water
 Test Date:2024-09-30

γ Range: 0 - 180DEG
 γ Interval: 1.0DEG
 Test System:EVERFINE GO-R5000_V2 SYSTEM V2.00.446
 Humidity:46%
 Test Distance:2.519m [K=1.0000]
 Remarks:

WEC AND CCEC

Test:U:120.09V I:0.1725A P:19.290W PF:0.9312 Freq:60.00Hz		
Lamp Flux:1247.44x1 lm		
NAME:ASD-MPR-9N18WH-MS	TYPE: N/A	WEIGHT: N/A
SPEC.:5000K	DIM.: N/A	SERIAL No.: N/A
MFR.:ASD Lighting Corp	SUR.: N/A	Shielding Angle: N/A

ρcc	80%			70%			50%			30%			10%			0
ρw	50%	30%	10%	50%	30%	10%	50%	30%	10%	50%	30%	10%	50%	30%	10%	0
ρfc	20%			20%			20%			20%			20%			0
RCR	RCR:Room Cavity Ratio						Wall Exitance Coefficients(WEC)									
0.0																
1.0	.312	.177	.056	.305	.174	.055	.291	.167	.053	.279	.161	.052	.268	.155	.050	
2.0	.293	.161	.049	.287	.158	.049	.275	.153	.047	.264	.148	.046	.254	.144	.045	
3.0	.271	.144	.043	.265	.142	.043	.255	.138	.042	.245	.134	.041	.237	.131	.041	
4.0	.250	.130	.038	.245	.128	.038	.236	.125	.037	.227	.122	.037	.219	.119	.036	
5.0	.231	.118	.034	.227	.116	.034	.218	.114	.033	.211	.111	.033	.204	.109	.033	
6.0	.214	.107	.031	.210	.106	.031	.203	.104	.030	.196	.102	.030	.190	.100	.030	
7.0	.199	.098	.028	.196	.097	.028	.189	.096	.028	.183	.094	.027	.177	.092	.027	
8.0	.186	.091	.026	.183	.090	.025	.177	.088	.025	.172	.087	.025	.166	.085	.025	
9.0	.174	.084	.024	.171	.084	.023	.166	.082	.023	.161	.081	.023	.157	.080	.023	
10.0	.164	.079	.022	.161	.078	.022	.157	.077	.022	.152	.076	.021	.148	.074	.021	

ρcc	80%			70%			50%			30%			10%			0
ρw	50%	30%	10%	50%	30%	10%	50%	30%	10%	50%	30%	10%	50%	30%	10%	0
ρfc	20%			20%			20%			20%			20%			0
RCR	RCR:Room Cavity Ratio						Ceiling Cavity Exitance Coefficients(CCEC)									
0.0	.190	.190	.190	.163	.163	.163	.111	.111	.111	.064	.064	.064	.020	.020	.020	
1.0	.180	.156	.134	.154	.134	.116	.106	.092	.080	.061	.053	.046	.019	.017	.015	
2.0	.172	.132	.098	.148	.114	.085	.101	.079	.059	.058	.046	.035	.019	.015	.011	
3.0	.165	.114	.074	.141	.099	.064	.097	.069	.045	.056	.040	.027	.018	.013	.009	
4.0	.157	.101	.058	.135	.087	.051	.093	.061	.036	.054	.036	.021	.017	.012	.007	
5.0	.150	.091	.047	.128	.078	.041	.088	.055	.029	.051	.032	.017	.017	.010	.006	
6.0	.142	.082	.039	.122	.071	.034	.084	.050	.024	.049	.029	.014	.016	.010	.005	
7.0	.136	.075	.033	.117	.065	.029	.081	.046	.020	.047	.027	.012	.015	.009	.004	
8.0	.129	.070	.029	.111	.060	.025	.077	.042	.018	.045	.025	.011	.014	.008	.003	
9.0	.123	.065	.025	.106	.056	.022	.073	.039	.016	.043	.023	.009	.014	.008	.003	
10.0	.117	.060	.022	.101	.052	.020	.070	.037	.014	.041	.022	.008	.013	.007	.003	

C Range: 0 - 360DEG
 C Interval: 22.5DEG
 Test Speed: HIGH
 Temperature:25.2DEG
 Operators:Water
 Test Date:2024-09-30

γ Range: 0 - 180DEG
 γ Interval: 1.0DEG
 Test System:EVERFINE GO-R5000_V2 SYSTEM V2.00.446
 Humidity:46%
 Test Distance:2.519m [K=1.0000]
 Remarks:

UGR(Unified Glare Rating) Table

Test:U:120.09V I:0.1725A P:19.290W PF:0.9312 Freq:60.00Hz Lamp Flux:1247.44x1 lm		
NAME:ASD-MPR-9N18WH-MS	TYPE: N/A	WEIGHT: N/A
SPEC.:5000K	DIM.: N/A	SERIAL No.: N/A
MFR.:ASD Lighting Corp	SUR.: N/A	Shielding Angle: N/A

ceiling/cavity	0.7	0.7	0.5	0.5	0.3	0.7	0.7	0.5	0.5	0.3
walls	0.5	0.3	0.5	0.3	0.3	0.5	0.3	0.5	0.3	0.3
working plane	0.2	0.2	0.2	0.2	0.2	0.2	0.2	0.2	0.2	0.2
Room dimensions	Viewed crosswise					Viewed endwise				
x = 2H y = 2H	22.1	23.6	22.3	23.8	24.0	22.0	23.5	22.3	23.7	23.9
3H	23.6	25.0	23.9	25.3	25.5	23.5	24.9	23.8	25.2	25.4
4H	24.2	25.6	24.6	25.8	26.1	24.1	25.5	24.4	25.7	26.0
6H	24.7	26.0	25.0	26.2	26.5	24.6	25.8	24.9	26.1	26.4
8H	24.9	26.1	25.2	26.4	26.7	24.7	25.9	25.1	26.2	26.5
12H	24.9	26.1	25.3	26.4	26.7	24.8	26.0	25.1	26.2	26.6
4H 2H	22.7	24.0	23.0	24.3	24.5	22.6	24.0	22.9	24.2	24.5
3H	24.4	25.6	24.8	25.9	26.2	24.3	25.5	24.7	25.8	26.1
4H	25.2	26.2	25.5	26.6	26.9	25.1	26.1	25.4	26.5	26.8
6H	25.7	26.7	26.1	27.1	27.4	25.6	26.6	26.0	26.9	27.3
8H	26.0	26.8	26.4	27.2	27.6	25.8	26.7	26.2	27.1	27.5
12H	26.1	26.9	26.5	27.3	27.7	25.9	26.7	26.4	27.1	27.5
8H 4H	25.4	26.3	25.8	26.7	27.1	25.3	26.2	25.7	26.6	27.0
6H	26.2	26.9	26.6	27.3	27.7	26.1	26.8	26.5	27.2	27.6
8H	26.5	27.1	26.9	27.5	28.0	26.3	27.0	26.8	27.4	27.9
12H	26.6	27.2	27.1	27.7	28.1	26.5	27.1	27.0	27.5	28.0
12H 4H	25.4	26.3	25.9	26.6	27.0	25.3	26.2	25.8	26.6	27.0
6H	26.2	26.9	26.7	27.3	27.8	26.1	26.8	26.6	27.2	27.6
8H	26.6	27.1	27.0	27.6	28.0	26.4	27.0	26.9	27.4	27.9
Variations with the observer position at spacings(CIE Pub.117):										
S = 1.0H	+ 0.1 / - 0.2					+ 0.1 / - 0.2				
1.5H	+ 0.2 / - 0.3					+ 0.2 / - 0.3				
2.0H	+ 0.2 / - 0.3					+ 0.2 / - 0.3				

CIE Pub.117, 1247 lm Total Lamp Luminous Flux Correct (8log(F/F0) = 0.8)
Area: 0.0221558 m2

C Range: 0 - 360DEG	γ Range: 0 - 180DEG
C Interval: 22.5DEG	γ Interval: 1.0DEG
Test Speed: HIGH	Test System:EVERFINE GO-R5000_V2 SYSTEM V2.00.446
Temperature:25.2DEG	Humidity:46%
Operators:Water	Test Distance:2.519m [K=1.0000]
Test Date:2024-09-30	Remarks:

UTILIZATION FACTORS TABLE

Test:U:120.09V I:0.1725A P:19.290W PF:0.9312 Freq:60.00Hz Lamp Flux:1247.44x1 lm		
NAME: ASD-MPR-9N18WH-MS	TYPE: N/A	WEIGHT: N/A
SPEC.:5000K	DIM.: N/A	SERIAL No.: N/A
MFR.:ASD Lighting Corp	SUR.: N/A	Shielding Angle: N/A

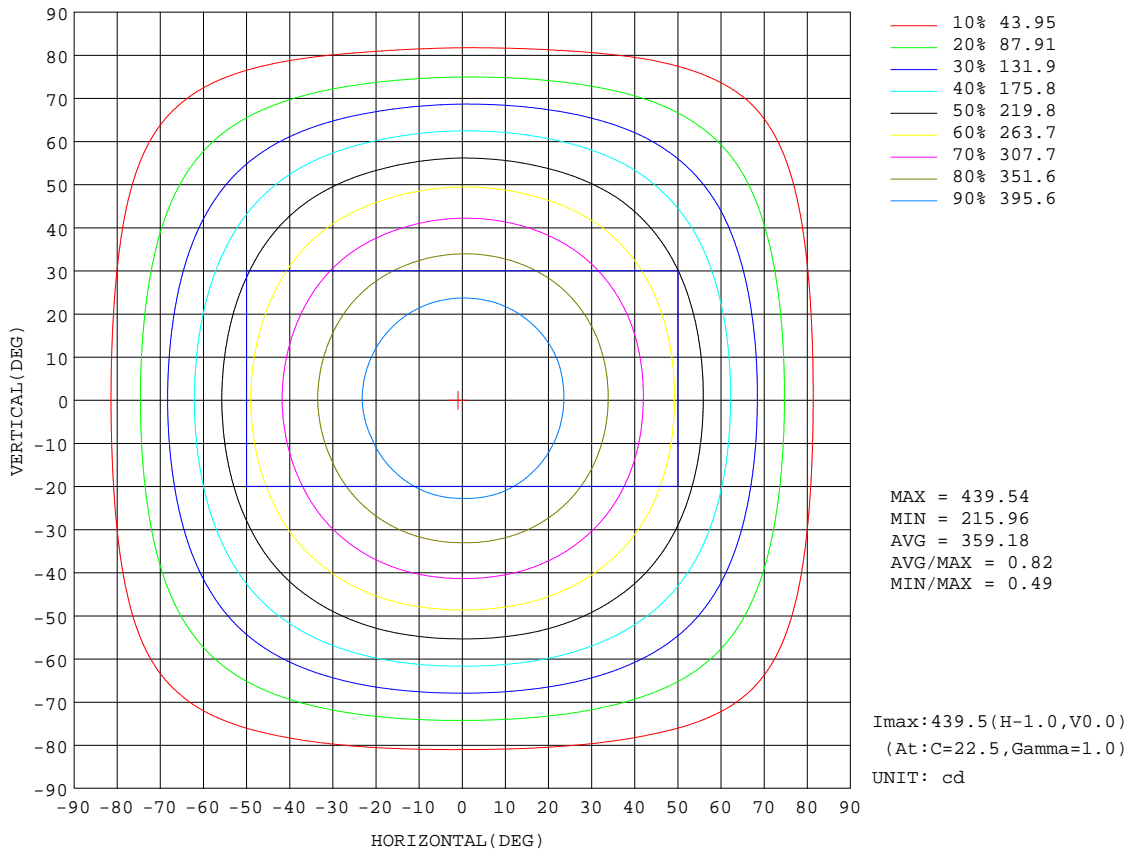
REFLECTANCE										
Ceiling	0.8	0.8	0.8	0.7	0.7	0.7	0.5	0.5	0.5	0
Walls	0.7	0.5	0.3	0.7	0.5	0.3	0.7	0.5	0.3	0
Working plane	0.2	0.2	0.2	0.2	0.2	0.2	0.2	0.2	0.2	0
ROOM INDEX	UTILIZATION FACTORS(PERCENT) $k(RI) \times RCR = 5$									
k = 0.60	57	46	39	57	46	39	56	45	39	32
0.80	67	56	48	66	55	48	65	55	48	41
1.00	76	65	57	75	64	57	72	66	57	49
1.25	83	72	65	82	72	65	79	70	64	57
1.50	88	78	71	86	77	70	83	75	69	62
2.00	95	86	80	93	85	79	89	83	77	70
2.50	99	91	85	97	90	84	93	87	82	74
3.00	102	95	90	100	94	89	96	91	86	78
4.00	106	100	96	104	99	94	100	95	92	83
5.00	109	104	100	106	102	98	102	98	95	86
ROOM INDEX	UF(total)									Direct
According to DIN EN 13032-2 2004			Suspended				SHRNOM = 1.25			

C Range: 0 - 360DEG
 C Interval: 22.5DEG
 Test Speed: HIGH
 Temperature:25.2DEG
 Operators:Water
 Test Date:2024-09-30

γ Range: 0 - 180DEG
 γ Interval: 1.0DEG
 Test System:EVERFINE GO-R5000_V2 SYSTEM V2.00.446
 Humidity:46%
 Test Distance:2.519m [K=1.0000]
 Remarks:

ISOCANDELA DIAGRAM

Test:U:120.09V I:0.1725A P:19.290W PF:0.9312 Freq:60.00Hz Lamp Flux:1247.44x1 lm		
NAME:ASD-MPR-9N18WH-MS	TYPE: N/A	WEIGHT: N/A
SPEC.:5000K	DIM.: N/A	SERIAL No.: N/A
MFR.: ASD Lighting Corp	SUR.: N/A	Shielding Angle: N/A



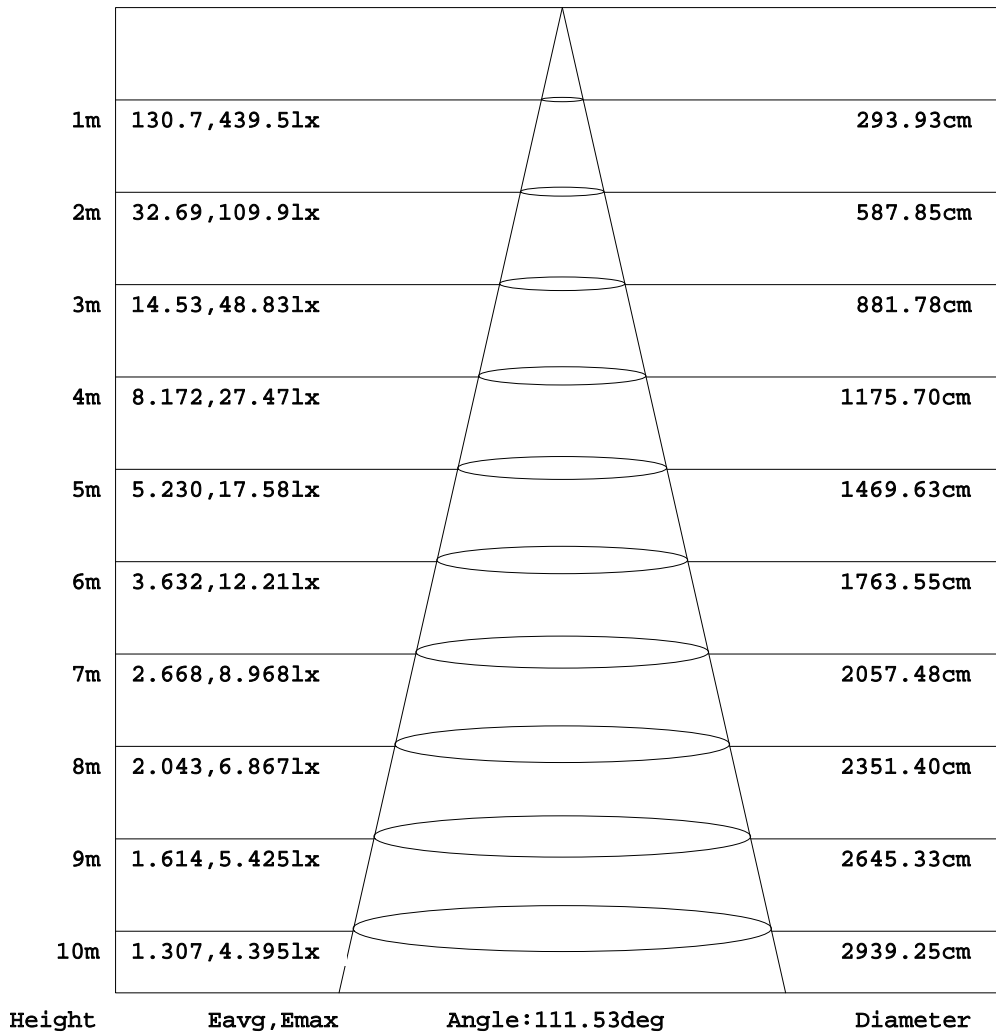
C Range: 0 - 360DEG
 C Interval: 22.5DEG
 Test Speed: HIGH
 Temperature: 25.2DEG
 Operators: Water
 Test Date: 2024-09-30

γ Range: 0 - 180DEG
 γ Interval: 1.0DEG
 Test System: EVERFINE GO-R5000_V2 SYSTEM V2.00.446
 Humidity: 46%
 Test Distance: 2.519m [K=1.0000]
 Remarks:

AAI Figure

Test:U:120.09V I:0.1725A P:19.290W PF:0.9312 Freq:60.00Hz Lamp Flux:1247.44x1 lm		
NAME:ASD-MPR-9N18WH-MS	TYPE: N/A	WEIGHT: N/A
SPEC.: 5000K	DIM.: N/A	SERIAL No.: N/A
MFR.: ASD Lighting Corp	SUR.: N/A	Shielding Angle: N/A

Flux out:902.8 lm



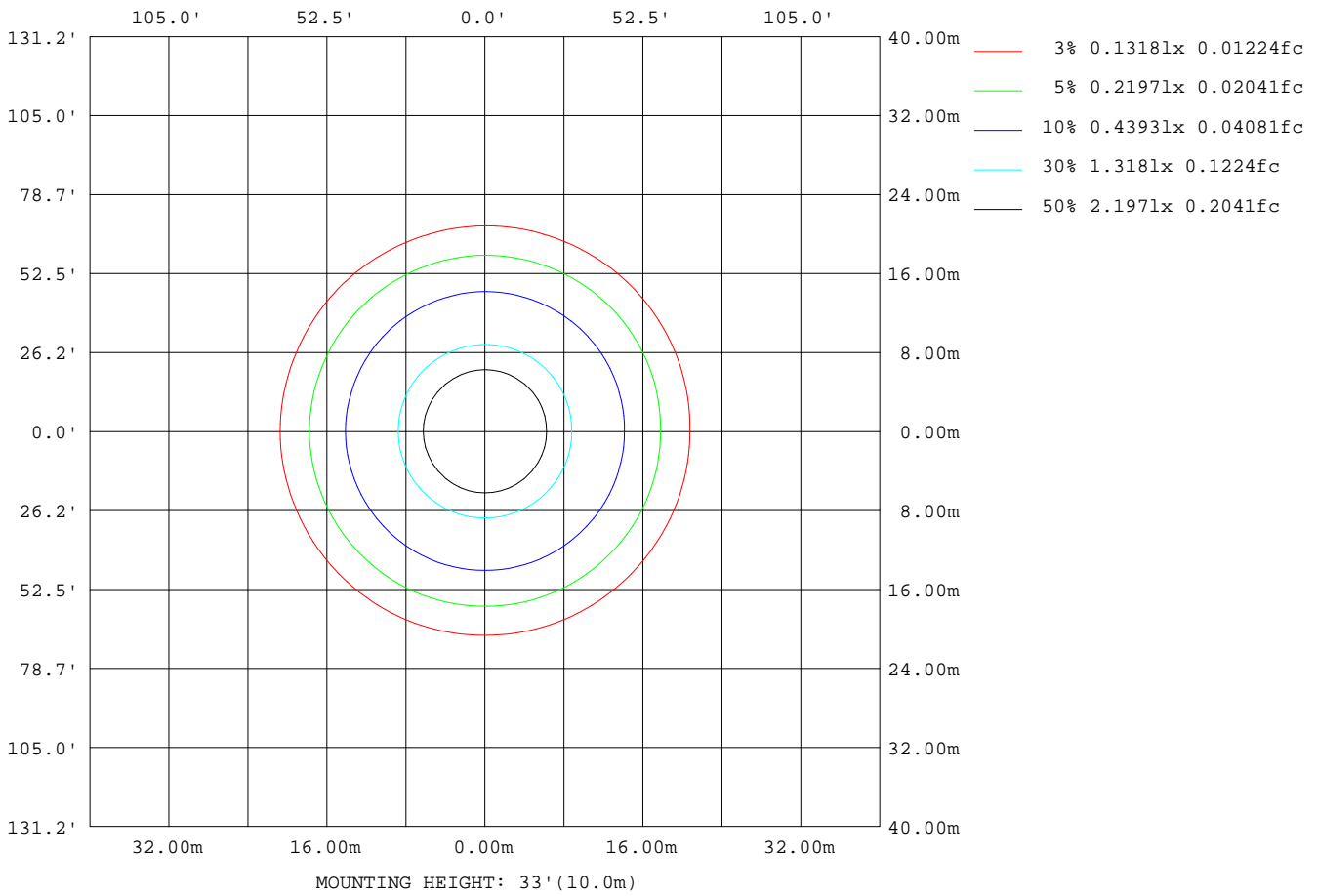
Note:The Curves indicate the illuminated area and the average illumination when the luminaire is at different distance.

C Range: 0 - 360DEG
C Interval: 22.5DEG
Test Speed: HIGH
Temperature:25.2DEG
Operators:Water
Test Date:2024-09-30

γ Range: 0 - 180DEG
γ Interval: 1.0DEG
Test System:EVERFINE GO-R5000_V2 SYSTEM V2.00.446
Humidity:46%
Test Distance:2.519m [K=1.0000]
Remarks:

ISOLUX DIAGRAM

Test:U:120.09V I:0.1725A P:19.290W PF:0.9312 Freq:60.00Hz Lamp Flux:1247.44x1 lm		
NAME:ASD-MPR-9N18WH-MS	TYPE: N/A	WEIGHT: N/A
SPEC.:5000K	DIM.: N/A	SERIAL No.: N/A
MFR.:ASD Lighting Corp	SUR.: N/A	Shielding Angle: N/A



C Range: 0 - 360DEG
 C Interval: 22.5DEG
 Test Speed: HIGH
 Temperature:25.2DEG
 Operators:Water
 Test Date:2024-09-30

γ Range: 0 - 180DEG
 γ Interval: 1.0DEG
 Test System:EVERFINE GO-R5000_V2 SYSTEM V2.00.446
 Humidity:46%
 Test Distance:2.519m [K=1.0000]
 Remarks:

LED Avg.L Report

Test:U:120.09V I:0.1725A P:19.290W PF:0.9312 Freq:60.00Hz Lamp Flux:1247.44x1 lm		
NAME: ASD-MPR-9N18WH-MS	TYPE: N/A	WEIGHT: N/A
SPEC.: 5000K	DIM.: N/A	SERIAL No.: N/A
MFR.:ASD Lighting Corp	SUR.: N/A	Shielding Angle: N/A

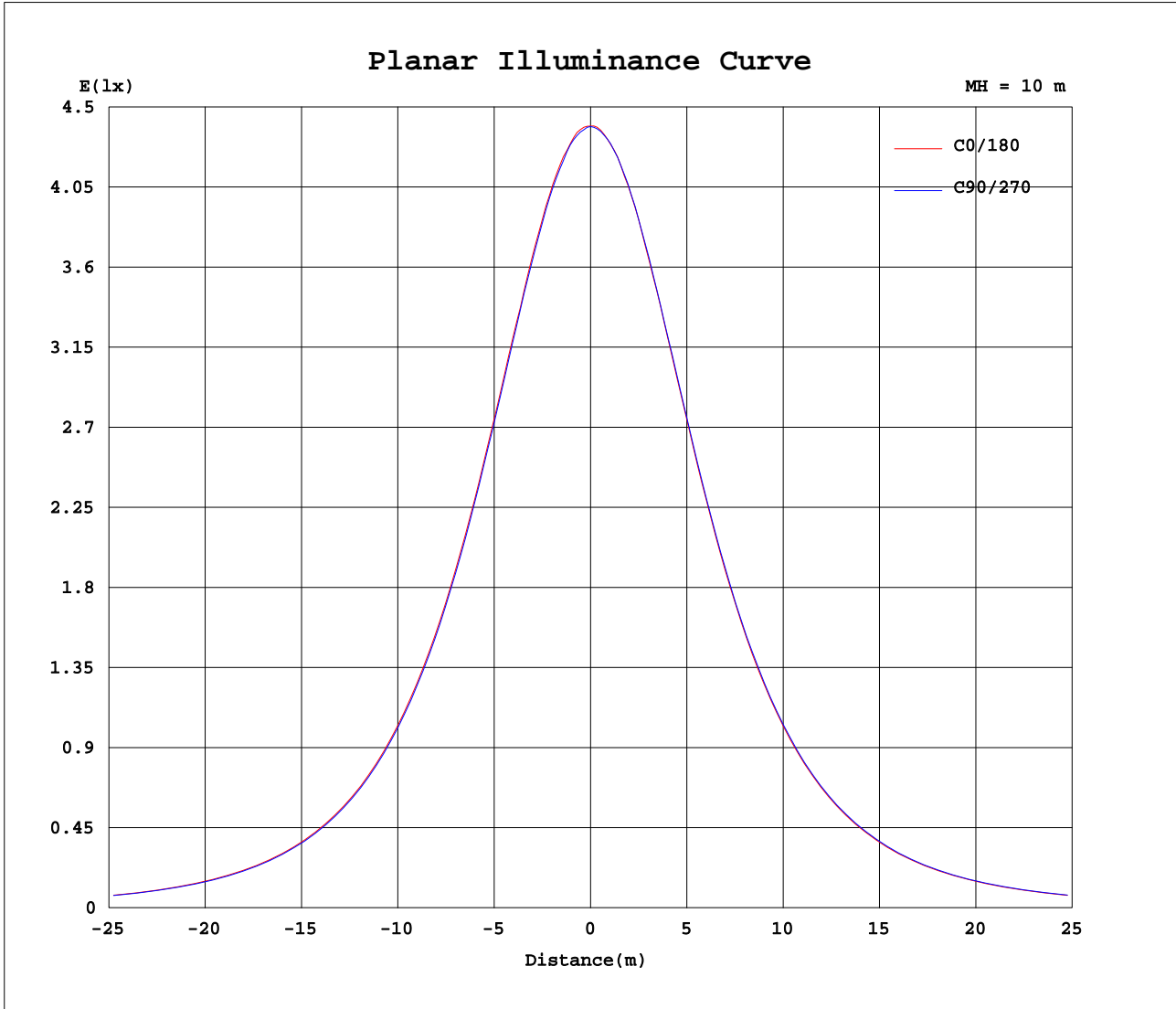
AvgL	cd/m2
L_0~180(65)av	16617
L_0~180(75)av	14919
L_0~180(85)av	11109
L_90~270(65)av	16594
L_90~270(75)av	14845
L_90~270(85)av	11016
L_45(65)av	16606
L_45(75)av	14875
L_45(85)av	11039

Standard: GB/T 29293-2012

C Range: 0 - 360DEG
 C Interval: 22.5DEG
 Test Speed: HIGH
 Temperature:25.2DEG
 Operators:Water
 Test Date:2024-09-30

γ Range: 0 - 180DEG
 γ Interval: 1.0DEG
 Test System:EVERFINE GO-R5000_V2 SYSTEM V2.00.446
 Humidity:46%
 Test Distance:2.519m [K=1.0000]
 Remarks:

Planar Illuminance Curve



C Range: 0 - 360DEG
 C Interval: 22.5DEG
 Test Speed: HIGH
 Temperature: 25.2DEG
 Operators: Water
 Test Date: 2024-09-30

γ Range: 0 - 180DEG
 γ Interval: 1.0DEG
 Test System: EVERFINE GO-R5000_V2 SYSTEM V2.00.446
 Humidity: 46%
 Test Distance: 2.519m [K=1.0000]
 Remarks:

LUMINOUS DISTRIBUTION INTENSITY DATA

Test:U:120.09V I:0.1725A P:19.290W PF:0.9312 Freq:60.00Hz Lamp Flux:1247.44x1 lm		
NAME: ASD-MPR-9N18WH-MS	TYPE: N/A	WEIGHT: N/A
SPEC.:5000K	DIM.: N/A	SERIAL No.: N/A
MFR.: ASD Lighting Corp	SUR.: N/A	Shielding Angle: N/A

Table--1

UNIT: cd

C(DEG) γ (DEG)	0	22.5	45	67.5	90	112.5	135	157.5	180	202.5	225	247.5	270	292.5	315	337.5			
0	439	439	439	439	439	439	439	439	439	439	439	439	439	439	439	439			
5	437	438	437	437	437	436	436	436	437	438	437	437	437	437	438	437			
10	431	432	431	430	430	430	430	429	430	431	431	431	431	431	432	432			
15	421	422	421	420	419	419	420	419	420	421	421	421	421	421	423	421			
20	406	408	406	406	405	405	405	405	407	407	407	407	408	408	409	408			
25	390	390	388	388	387	388	387	387	389	389	389	389	390	391	392	391			
30	369	369	367	367	366	367	366	367	368	368	369	369	370	370	371	371			
35	345	345	344	343	342	342	342	343	344	345	345	345	347	347	348	347			
40	319	319	317	316	315	316	315	315	317	318	318	318	320	321	322	321			
45	289	290	288	287	286	287	287	286	289	289	289	290	291	292	293	292			
50	258	259	256	256	255	255	255	256	257	257	258	258	260	261	262	261			
55	225	225	223	223	222	223	222	222	225	224	225	225	228	228	230	228			
60	191	191	189	189	188	189	188	188	190	190	190	191	193	194	195	194			
65	156	156	153	153	153	154	153	154	155	154	155	156	158	159	160	159			
70	121	119	118	117	117	118	118	118	119	119	119	120	122	123	124	124			
75	85.8	84.8	83.2	82.9	82.8	83.6	83.6	83.5	85.3	84.8	84.8	85.7	87.4	88.7	89.6	89.0			
80	52.6	52.0	50.4	50.5	50.4	51.1	50.8	51.0	52.9	52.1	52.5	52.9	54.8	55.2	56.7	55.6			
85	20.5	20.4	18.7	19.5	18.8	20.2	19.3	20.5	22.4	21.5	22.3	22.0	23.7	23.7	24.9	23.7			
90	0.00	0.00	0.00	0.00	0.00	0.00	0.00	0.00	0.00	0.00	0.00	0.00	0.00	0.00	0.00	0.00			
95	0.00	0.00	0.00	0.00	0.00	0.00	0.00	0.00	0.00	0.00	0.00	0.00	0.00	0.00	0.00	0.00			
100	0.00	0.00	0.00	0.00	0.00	0.00	0.00	0.00	0.00	0.00	0.00	0.00	0.00	0.00	0.00	0.00			
105	0.00	0.00	0.00	0.00	0.00	0.00	0.00	0.00	0.00	0.00	0.00	0.00	0.00	0.00	0.00	0.00			
110	0.00	0.00	0.00	0.00	0.00	0.00	0.00	0.00	0.00	0.00	0.00	0.00	0.00	0.00	0.00	0.00			
115	0.00	0.00	0.00	0.00	0.00	0.00	0.00	0.00	0.00	0.00	0.00	0.00	0.00	0.00	0.00	0.00			
120	0.00	0.00	0.00	0.00	0.00	0.00	0.00	0.00	0.00	0.00	0.00	0.00	0.00	0.00	0.00	0.00			
125	0.00	0.00	0.00	0.00	0.00	0.00	0.00	0.00	0.00	0.00	0.00	0.00	0.00	0.00	0.00	0.00			
130	0.00	0.00	0.00	0.00	0.00	0.00	0.00	0.00	0.00	0.00	0.00	0.00	0.00	0.00	0.00	0.00			
135	0.00	0.00	0.00	0.00	0.00	0.00	0.00	0.00	0.00	0.00	0.00	0.00	0.00	0.00	0.00	0.00			
140	0.00	0.00	0.00	0.00	0.00	0.00	0.00	0.00	0.00	0.00	0.00	0.00	0.00	0.00	0.00	0.00			
145	0.00	0.00	0.00	0.00	0.00	0.00	0.00	0.00	0.00	0.00	0.00	0.00	0.00	0.00	0.00	0.00			
150	0.00	0.00	0.00	0.00	0.00	0.00	0.00	0.00	0.00	0.00	0.00	0.00	0.00	0.00	0.00	0.00			
155	0.00	0.00	0.00	0.00	0.00	0.00	0.00	0.00	0.00	0.00	0.00	0.00	0.00	0.00	0.00	0.00			
160	0.00	0.00	0.00	0.00	0.00	0.00	0.00	0.00	0.00	0.00	0.00	0.00	0.00	0.00	0.00	0.00			
165	0.00	0.00	0.00	0.00	0.00	0.00	0.00	0.00	0.00	0.00	0.00	0.00	0.00	0.00	0.00	0.00			
170	0.00	0.00	0.00	0.00	0.00	0.00	0.00	0.00	0.00	0.00	0.00	0.00	0.00	0.00	0.00	0.00			
175	0.00	0.00	0.00	0.00	0.00	0.00	0.00	0.00	0.00	0.00	0.00	0.00	0.00	0.00	0.00	0.00			
180	0.00	0.00	0.00	0.00	0.00	0.00	0.00	0.00	0.00	0.00	0.00	0.00	0.00	0.00	0.00	0.00			

C Range: 0 - 360DEG
 C Interval: 22.5DEG
 Test Speed: HIGH
 Temperature:25.2DEG
 Operators:Water
 Test Date:2024-09-30

γ Range: 0 - 180DEG
 γ Interval: 1.0DEG
 Test System:EVERFINE GO-R5000_V2 SYSTEM V2.00.446
 Humidity:46%
 Test Distance:2.519m [K=1.0000]
 Remarks: