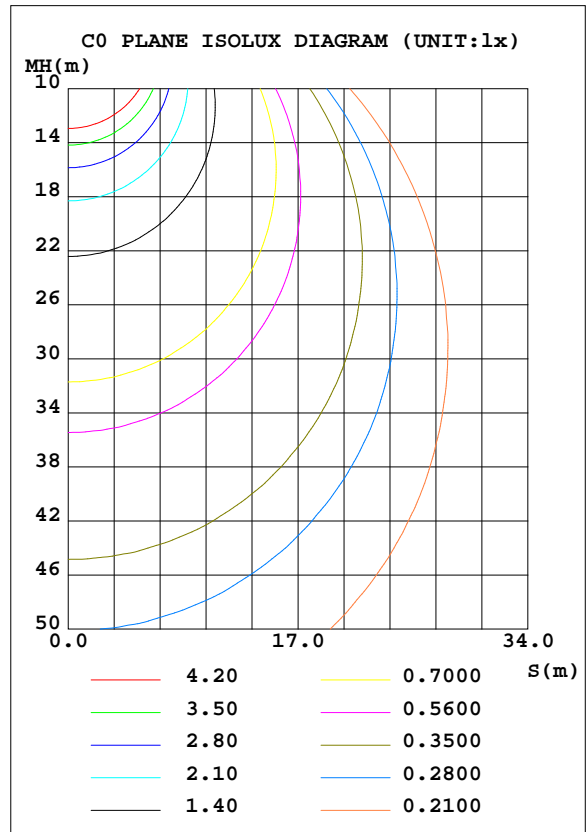
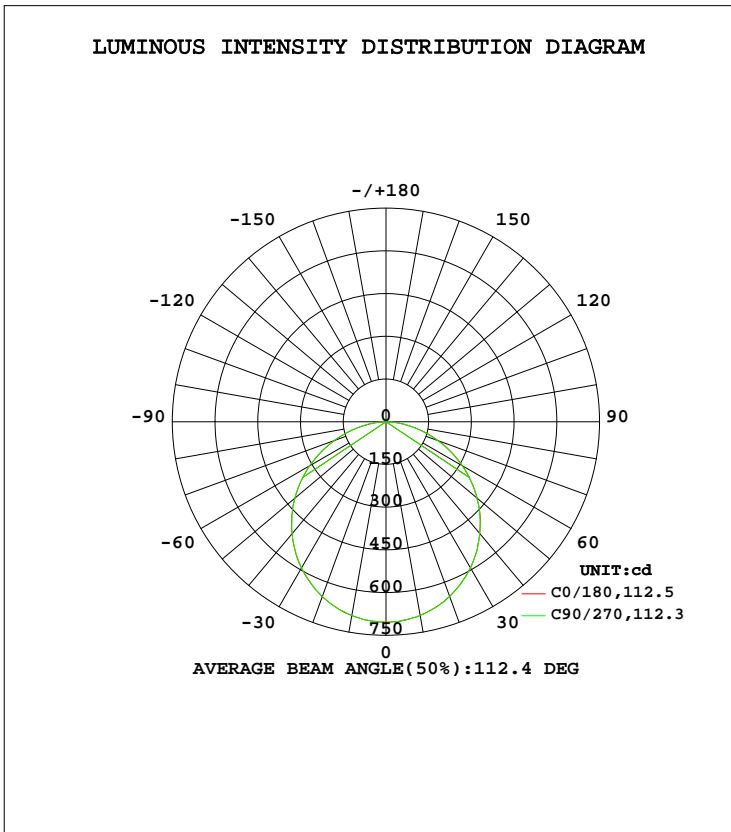


LUMINAIRE PHOTOMETRIC TEST REPORT

Test:U:120.05V I:0.2047A P:24.220W PF:0.9856 Freq:60.00Hz Lamp Flux:2011.13x1 lm		
NAME: ASD-MPR-12D24WH-EM	TYPE: N/A	WEIGHT: N/A
SPEC.: 6000K	DIM.: N/A	SERIAL No.: N/A
MFR.: ASD Lighting Corp	SUR.: N/A	Shielding Angle: N/A

DATA OF LAMP		PHOTOMETRIC DATA			
MODEL	ASD-MPR-12D24WH-EM	Imax(cd)	704.9	S/MH(C0/180)	1.25
NOMINAL POWER(W)	24W	LOR(%)	100.0	S/MH(C90/270)	1.25
RATED VOLTAGE(V)	120	TOTAL FLUX(lm)	2011.1	η UP, DN(C0-180)	0.0,50.1
NOMINAL FLUX(lm)	2011.13	CIE CLASS	DIRECT	η UP, DN(C180-360)	0.0,49.9
LAMPS INSIDE	1	η up(%)	0.0	CIBSE SHR NOM	1.25
TEST VOLTAGE(V)	120	η down(%)	100.0	CIBSE SHR MAX	1.35



C Range: 0 - 360DEG
 C Interval: 22.5DEG
 Test Speed: HIGH
 Temperature:24.3DEG
 Operators:Water
 Test Date:2025-03-29

γ Range: 0 - 180DEG
 γ Interval: 1.0DEG
 Test System:EVERFINE GO-R5000_V2 SYSTEM V2.00.446
 Humidity:48%
 Test Distance:2.519m [K=1.0000]
 Remarks:

ZONAL FLUX DIAGRAM

ZONAL FLUX DIAGRAM:

γ	C0	C45	C90	C135	C180	C225	C270	C315	γ	Φ zone	Φ total	%lum, lamp
10	691.1	690.9	690.7	689.2	689.8	690.2	690.6	690.0	0- 10	66.55	66.55	3.31,3.31
20	654.2	653.2	652.8	651.0	652.4	652.7	652.7	653.4	10- 20	190.4	257.0	12.8,12.8
30	593.6	593.6	592.4	589.3	593.6	592.9	592.7	593.5	20- 30	288.2	545.1	27.1,27.1
40	512.9	514.9	512.8	509.4	512.7	512.2	512.0	513.7	30- 40	347.1	892.3	44.4,44.4
50	417.9	419.9	417.7	414.6	417.4	417.8	416.2	417.5	40- 50	360.2	1252	62.3,62.3
60	309.5	312.1	310.1	306.4	310.2	309.5	308.3	309.1	50- 60	325.9	1578	78.5,78.5
70	192.3	197.0	194.6	191.5	195.9	195.0	192.5	192.4	60- 70	249.4	1828	90.9,90.9
80	78.78	84.57	83.98	80.86	84.12	83.76	80.86	79.30	70- 80	144.5	1972	98.1,98.1
90	0	0	0	0	0	0	0	0	80- 90	38.92	2011	100,100
100	0	0	0	0	0	0	0	0	90-100	0	2011	100,100
110	0	0	0	0	0	0	0	0	100-110	0	2011	100,100
120	0	0	0	0	0	0	0	0	110-120	0	2011	100,100
130	0	0	0	0	0	0	0	0	120-130	0	2011	100,100
140	0	0	0	0	0	0	0	0	130-140	0	2011	100,100
150	0	0	0	0	0	0	0	0	140-150	0	2011	100,100
160	0	0	0	0	0	0	0	0	150-160	0	2011	100,100
170	0	0	0	0	0	0	0	0	160-170	0	2011	100,100
180	0	0	0	0	0	0	0	0	170-180	0	2011	100,100
DEG	LUMINOUS INTENSITY:cd									UNIT:lm		

Conical surface Flux(90deg): 1073.7 lm

%lum = 53.4%
 %lamp = 53.4%

Conical surface Flux(120deg): 1578.3 lm

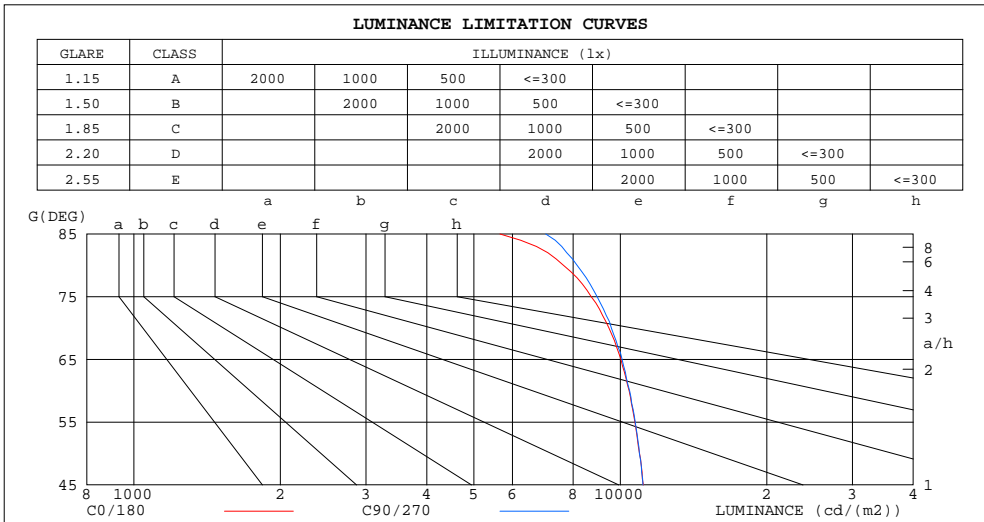
%lum = 78.5%
 %lamp = 78.5%

C Range: 0 - 360DEG
 C Interval: 22.5DEG
 Test Speed: HIGH
 Temperature:24.3DEG
 Operators:Water
 Test Date:2025-03-29

γ Range: 0 - 180DEG
 γ Interval: 1.0DEG
 Test System:EVERFINE GO-R5000_V2 SYSTEM V2.00.446
 Humidity:48%
 Test Distance:2.519m [K=1.0000]
 Remarks:

LUMINANCE LIMITATION CURVES

Test:U:120.05V I:0.2047A P:24.220W PF:0.9856 Freq:60.00Hz Lamp Flux:2011.13x1 lm		
NAME: ASD-MPR-12D24WH-EM	TYPE: N/A	WEIGHT: N/A
SPEC.: 6000K	DIM.: N/A	SERIAL No.: N/A
MFR.: ASD Lighting Corp	SUR.: N/A	Shielding Angle: N/A



LUMINANCE cd/(m2)		
G (DEG)	C0/180	C90/270
85	5658	7024
80	7643	8148
75	8710	8962
70	9474	9586
65	10028	10088
60	10428	10451
55	10713	10733
50	10954	10948
45	11154	11130

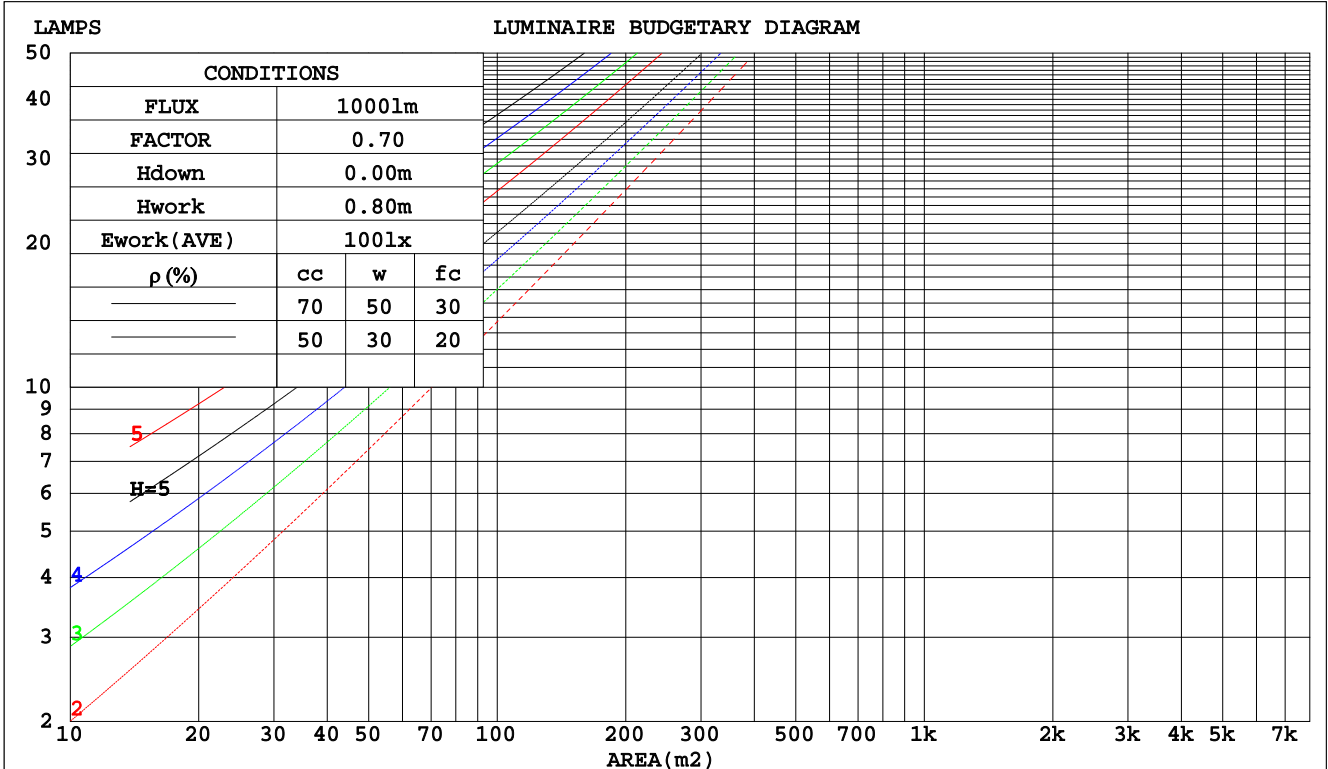
C Range: 0 - 360DEG
 C Interval: 22.5DEG
 Test Speed: HIGH
 Temperature: 24.3DEG
 Operators: Water
 Test Date: 2025-03-29

γ Range: 0 - 180DEG
 γ Interval: 1.0DEG
 Test System: EVERFINE GO-R5000_V2 SYSTEM V2.00.446
 Humidity: 48%
 Test Distance: 2.519m [K=1.0000]
 Remarks:

CU AND LUMINAIRE BUDGETARY ESTIMATE DIAGRAM

Test:U:120.05V I:0.2047A P:24.220W PF:0.9856 Freq:60.00Hz Lamp Flux:2011.13x1 lm		
NAME: ASD-MPR-12D24WH-EM	TYPE: N/A	WEIGHT: N/A
SPEC.: 6000K	DIM.: N/A	SERIAL No.: N/A
MFR.: ASD Lighting Corp	SUR.: N/A	Shielding Angle: N/A

pcc	80%			70%			50%			30%			10%			0
	50%	30%	10%	50%	30%	10%	50%	30%	10%	50%	30%	10%	50%	30%	10%	0
pw																0
pfc	20%			20%			20%			20%			20%			0
RCR	RCR:Room Cavity Ratio Coefficients of Utilization(CU)															
0.0	1.19	1.19	1.19	1.16	1.16	1.16	1.11	1.11	1.11	1.06	1.06	1.06	1.02	1.02	1.02	1.00
1.0	1.04	.99	.96	1.02	.98	.94	.97	.94	.91	.93	.91	.88	.90	.88	.86	.83
2.0	.90	.83	.78	.88	.82	.77	.85	.79	.75	.82	.77	.73	.79	.75	.72	.69
3.0	.79	.71	.64	.78	.70	.64	.75	.68	.63	.72	.66	.62	.69	.65	.60	.58
4.0	.70	.61	.54	.69	.60	.54	.66	.59	.53	.64	.58	.53	.62	.56	.52	.50
5.0	.63	.54	.47	.61	.53	.47	.59	.52	.46	.57	.51	.46	.55	.50	.45	.43
6.0	.56	.47	.41	.55	.47	.41	.54	.46	.40	.52	.45	.40	.50	.44	.40	.37
7.0	.51	.42	.36	.50	.42	.36	.49	.41	.36	.47	.40	.35	.46	.40	.35	.33
8.0	.47	.38	.32	.46	.38	.32	.45	.37	.32	.43	.37	.32	.42	.36	.31	.29
9.0	.43	.34	.29	.42	.34	.29	.41	.34	.29	.40	.33	.28	.39	.33	.28	.26
10.0	.39	.31	.26	.39	.31	.26	.38	.31	.26	.37	.30	.26	.36	.30	.26	.24



C Range: 0 - 360DEG
 C Interval: 22.5DEG
 Test Speed: HIGH
 Temperature:24.3DEG
 Operators:Water
 Test Date:2025-03-29

γ Range: 0 - 180DEG
 γ Interval: 1.0DEG
 Test System:EVERFINE GO-R5000_V2 SYSTEM V2.00.446
 Humidity:48%
 Test Distance:2.519m [K=1.0000]
 Remarks:

WEC AND CCEC

Test:U:120.05V I:0.2047A P:24.220W PF:0.9856 Freq:60.00Hz		
Lamp Flux:2011.13x1 lm		
NAME: ASD-MPR-12D24WH-EM	TYPE: N/A	WEIGHT: N/A
SPEC.: 6000K	DIM.: N/A	SERIAL No.: N/A
MFR.: ASD Lighting Corp	SUR.: N/A	Shielding Angle: N/A

ρcc	80%			70%			50%			30%			10%			0
ρw	50%	30%	10%	50%	30%	10%	50%	30%	10%	50%	30%	10%	50%	30%	10%	0
ρfc	20%			20%			20%			20%			20%			0
RCR	RCR:Room Cavity Ratio						Wall Exitance Coefficients(WEC)									
0.0																
1.0	.311	.177	.056	.304	.174	.055	.291	.167	.053	.279	.161	.052	.268	.155	.050	
2.0	.293	.161	.049	.287	.158	.049	.275	.153	.047	.264	.148	.046	.254	.144	.045	
3.0	.271	.144	.043	.265	.142	.043	.255	.138	.042	.245	.135	.041	.237	.131	.041	
4.0	.250	.130	.038	.245	.128	.038	.236	.125	.037	.227	.122	.037	.219	.119	.036	
5.0	.231	.118	.034	.227	.116	.034	.218	.114	.033	.211	.111	.033	.204	.109	.033	
6.0	.214	.107	.031	.210	.106	.031	.203	.104	.030	.196	.102	.030	.190	.100	.030	
7.0	.199	.098	.028	.196	.098	.028	.189	.096	.028	.183	.094	.027	.178	.092	.027	
8.0	.186	.091	.026	.183	.090	.025	.177	.089	.025	.172	.087	.025	.167	.086	.025	
9.0	.174	.084	.024	.172	.084	.023	.166	.082	.023	.161	.081	.023	.157	.080	.023	
10.0	.164	.079	.022	.161	.078	.022	.157	.077	.022	.152	.076	.021	.148	.074	.021	

ρcc	80%			70%			50%			30%			10%			0
ρw	50%	30%	10%	50%	30%	10%	50%	30%	10%	50%	30%	10%	50%	30%	10%	0
ρfc	20%			20%			20%			20%			20%			0
RCR	RCR:Room Cavity Ratio						Ceiling Cavity Exitance Coefficients(CCEC)									
0.0	.190	.190	.190	.163	.163	.163	.111	.111	.111	.064	.064	.064	.020	.020	.020	
1.0	.180	.156	.134	.154	.134	.116	.106	.092	.080	.061	.053	.046	.019	.017	.015	
2.0	.172	.132	.098	.148	.114	.085	.101	.079	.059	.058	.046	.035	.019	.015	.011	
3.0	.165	.114	.074	.141	.099	.064	.097	.069	.045	.056	.040	.027	.018	.013	.009	
4.0	.157	.101	.058	.135	.087	.051	.093	.061	.036	.054	.036	.021	.017	.012	.007	
5.0	.150	.091	.047	.128	.078	.041	.088	.055	.029	.051	.032	.017	.017	.010	.006	
6.0	.142	.082	.039	.122	.071	.034	.084	.050	.024	.049	.029	.014	.016	.010	.005	
7.0	.136	.075	.033	.117	.065	.029	.081	.046	.020	.047	.027	.012	.015	.009	.004	
8.0	.129	.070	.029	.111	.060	.025	.077	.042	.018	.045	.025	.011	.014	.008	.003	
9.0	.123	.065	.025	.106	.056	.022	.073	.039	.016	.043	.023	.009	.014	.008	.003	
10.0	.117	.060	.022	.101	.052	.020	.070	.037	.014	.041	.022	.008	.013	.007	.003	

C Range: 0 - 360DEG
 C Interval: 22.5DEG
 Test Speed: HIGH
 Temperature:24.3DEG
 Operators:Water
 Test Date:2025-03-29

γ Range: 0 - 180DEG
 γ Interval: 1.0DEG
 Test System:EVERFINE GO-R5000_V2 SYSTEM V2.00.446
 Humidity:48%
 Test Distance:2.519m [K=1.0000]
 Remarks:

UGR(Unified Glare Rating) Table

Test:U:120.05V I:0.2047A P:24.220W PF:0.9856 Freq:60.00Hz										
Lamp Flux:2011.13x1 lm										
NAME: ASD-MPR-12D24WH-EM					TYPE: N/A			WEIGHT: N/A		
SPEC.: 6000K					DIM.: N/A			SERIAL No.: N/A		
MFR.: ASD Lighting Corp					SUR.: N/A			Shielding Angle: N/A		
ceiling/cavity	0.7	0.7	0.5	0.5	0.3	0.7	0.7	0.5	0.5	0.3
walls	0.5	0.3	0.5	0.3	0.3	0.5	0.3	0.5	0.3	0.3
working plane	0.2	0.2	0.2	0.2	0.2	0.2	0.2	0.2	0.2	0.2
Room dimensions	Viewed crosswise					Viewed endwise				
x = 2H y = 2H	18.7	20.3	19.0	20.5	20.7	18.7	20.3	19.0	20.5	20.7
3H	20.3	21.7	20.6	21.9	22.1	20.3	21.7	20.6	21.9	22.2
4H	20.9	22.2	21.2	22.5	22.7	20.9	22.2	21.2	22.5	22.8
6H	21.3	22.5	21.6	22.8	23.1	21.4	22.6	21.7	22.9	23.2
8H	21.4	22.6	21.7	22.9	23.2	21.5	22.7	21.8	23.0	23.3
12H	21.4	22.6	21.8	22.9	23.2	21.6	22.8	21.9	23.1	23.4
4H 2H	19.4	20.7	19.7	21.0	21.2	19.4	20.7	19.7	21.0	21.2
3H	21.1	22.3	21.4	22.5	22.9	21.1	22.3	21.4	22.6	22.9
4H	21.8	22.9	22.2	23.2	23.5	21.8	22.9	22.2	23.2	23.6
6H	22.3	23.3	22.7	23.7	24.0	22.4	23.4	22.8	23.7	24.1
8H	22.5	23.4	22.9	23.8	24.2	22.6	23.5	23.0	23.9	24.3
12H	22.6	23.4	23.0	23.8	24.2	22.8	23.6	23.2	24.0	24.4
8H 4H	22.1	23.0	22.5	23.3	23.7	22.1	23.0	22.5	23.4	23.8
6H	22.8	23.5	23.2	23.9	24.4	22.9	23.6	23.3	24.0	24.4
8H	23.0	23.7	23.5	24.1	24.6	23.2	23.8	23.6	24.2	24.7
12H	23.2	23.8	23.7	24.2	24.7	23.4	23.9	23.9	24.4	24.9
12H 4H	22.1	22.9	22.5	23.3	23.7	22.1	23.0	22.6	23.3	23.7
6H	22.8	23.5	23.3	23.9	24.4	22.9	23.6	23.4	24.0	24.5
8H	23.1	23.7	23.6	24.2	24.6	23.3	23.8	23.7	24.3	24.8
Variations with the observer position at spacings(CIE Pub.117):										
S = 1.0H	+ 0.2 / - 0.2					+ 0.1 / - 0.2				
1.5H	+ 0.2 / - 0.3					+ 0.2 / - 0.3				
2.0H	+ 0.1 / - 0.3					+ 0.1 / - 0.3				

CIE Pub.117, 2011 lm Total Lamp Luminous Flux Correct (8log(F/F0) = 2.4)
 Area: 0.0593656 m2

C Range: 0 - 360DEG
 C Interval: 22.5DEG
 Test Speed: HIGH
 Temperature:24.3DEG
 Operators:Water
 Test Date:2025-03-29

γ Range: 0 - 180DEG
 γ Interval: 1.0DEG
 Test System:EVERFINE GO-R5000_V2 SYSTEM V2.00.446
 Humidity:48%
 Test Distance:2.519m [K=1.0000]
 Remarks:

UTILIZATION FACTORS TABLE

Test:U:120.05V I:0.2047A P:24.220W PF:0.9856 Freq:60.00Hz Lamp Flux:2011.13x1 lm		
NAME: ASD-MPR-12D24WH-EM	TYPE: N/A	WEIGHT: N/A
SPEC.:6000K	DIM.: N/A	SERIAL No.: N/A
MFR.: ASD Lighting Corp	SUR.: N/A	Shielding Angle: N/A

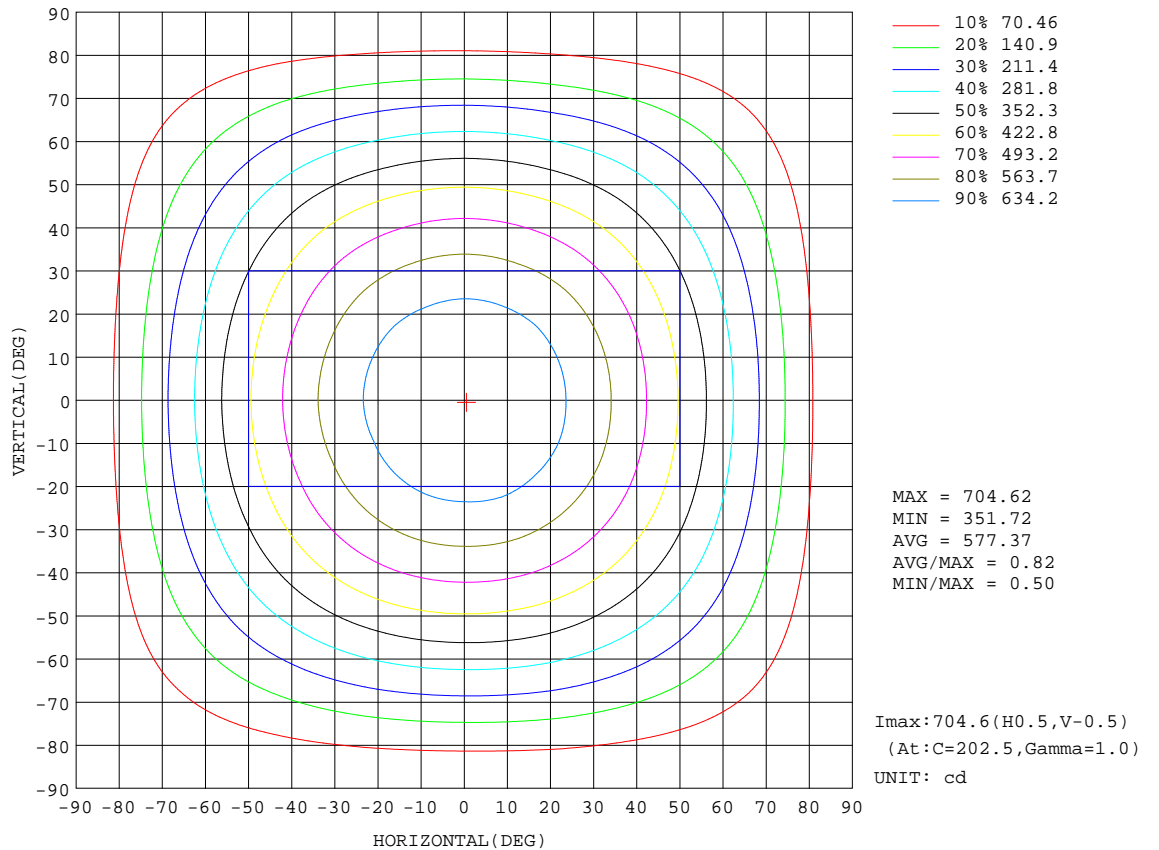
REFLECTANCE										
Ceiling	0.8	0.8	0.8	0.7	0.7	0.7	0.5	0.5	0.5	0
Walls	0.7	0.5	0.3	0.7	0.5	0.3	0.7	0.5	0.3	0
Working plane	0.2	0.2	0.2	0.2	0.2	0.2	0.2	0.2	0.2	0
ROOM INDEX	UTILIZATION FACTORS(PERCENT) k(RI) x RCR = 5									
k = 0.60	57	46	39	57	46	39	55	45	38	32
0.80	67	56	48	66	55	48	65	55	48	41
1.00	76	65	57	75	64	57	72	66	57	49
1.25	83	72	65	81	72	65	79	70	64	57
1.50	88	78	71	86	77	70	83	75	69	62
2.00	95	86	80	93	85	79	89	83	77	70
2.50	99	91	85	97	90	84	93	87	82	74
3.00	102	95	90	100	94	89	96	91	86	78
4.00	106	100	96	104	99	94	100	95	92	83
5.00	109	104	100	106	102	98	102	98	95	86
ROOM INDEX	UF(total)									Direct
According to DIN EN 13032-2 2004			Suspended				SHRNOM = 1.25			

C Range: 0 - 360DEG
 C Interval: 22.5DEG
 Test Speed: HIGH
 Temperature:24.3DEG
 Operators:Water
 Test Date:2025-03-29

γ Range: 0 - 180DEG
 γ Interval: 1.0DEG
 Test System:EVERFINE GO-R5000_V2 SYSTEM V2.00.446
 Humidity:48%
 Test Distance:2.519m [K=1.0000]
 Remarks:

ISOCANDELA DIAGRAM

Test:U:120.05V I:0.2047A P:24.220W PF:0.9856 Freq:60.00Hz Lamp Flux:2011.13x1 lm		
NAME: ASD-MPR-12D24WH-EM	TYPE: N/A	WEIGHT: N/A
SPEC.: 6000K	DIM.: N/A	SERIAL No.: N/A
MFR.: ASD Lighting Corp	SUR.: N/A	Shielding Angle: N/A



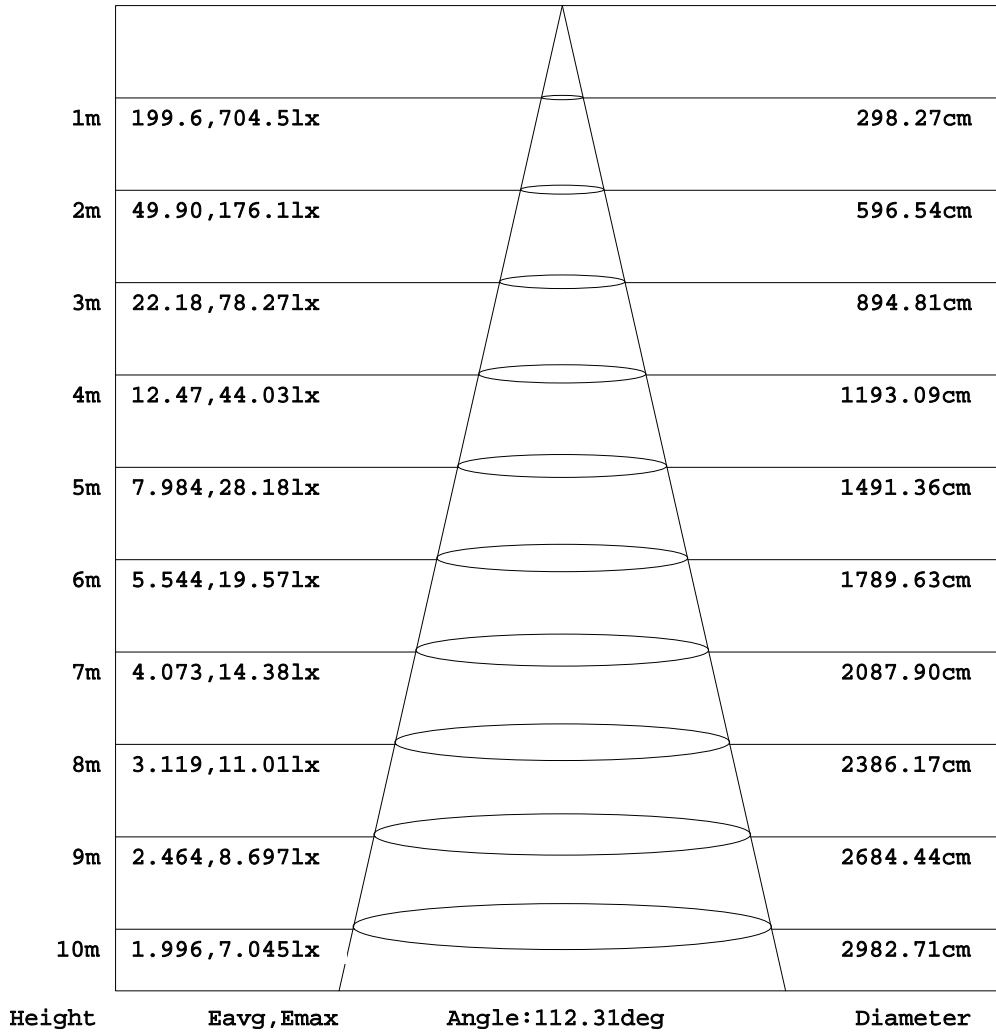
C Range: 0 - 360DEG
C Interval: 22.5DEG
Test Speed: HIGH
Temperature: 24.3DEG
Operators: Water
Test Date: 2025-03-29

γ Range: 0 - 180DEG
γ Interval: 1.0DEG
Test System: EVERFINE GO-R5000_V2 SYSTEM V2.00.446
Humidity: 48%
Test Distance: 2.519m [K=1.0000]
Remarks:

AAI Figure

Test:U:120.05V I:0.2047A P:24.220W PF:0.9856 Freq:60.00Hz Lamp Flux:2011.13x1 lm		
NAME: ASD-MPR-12D24WH-EM	TYPE: N/A	WEIGHT: N/A
SPEC.:6000K	DIM.: N/A	SERIAL No.: N/A
MFR.:ASD Lighting Corp	SUR.: N/A	Shielding Angle: N/A

Flux out:1487 lm



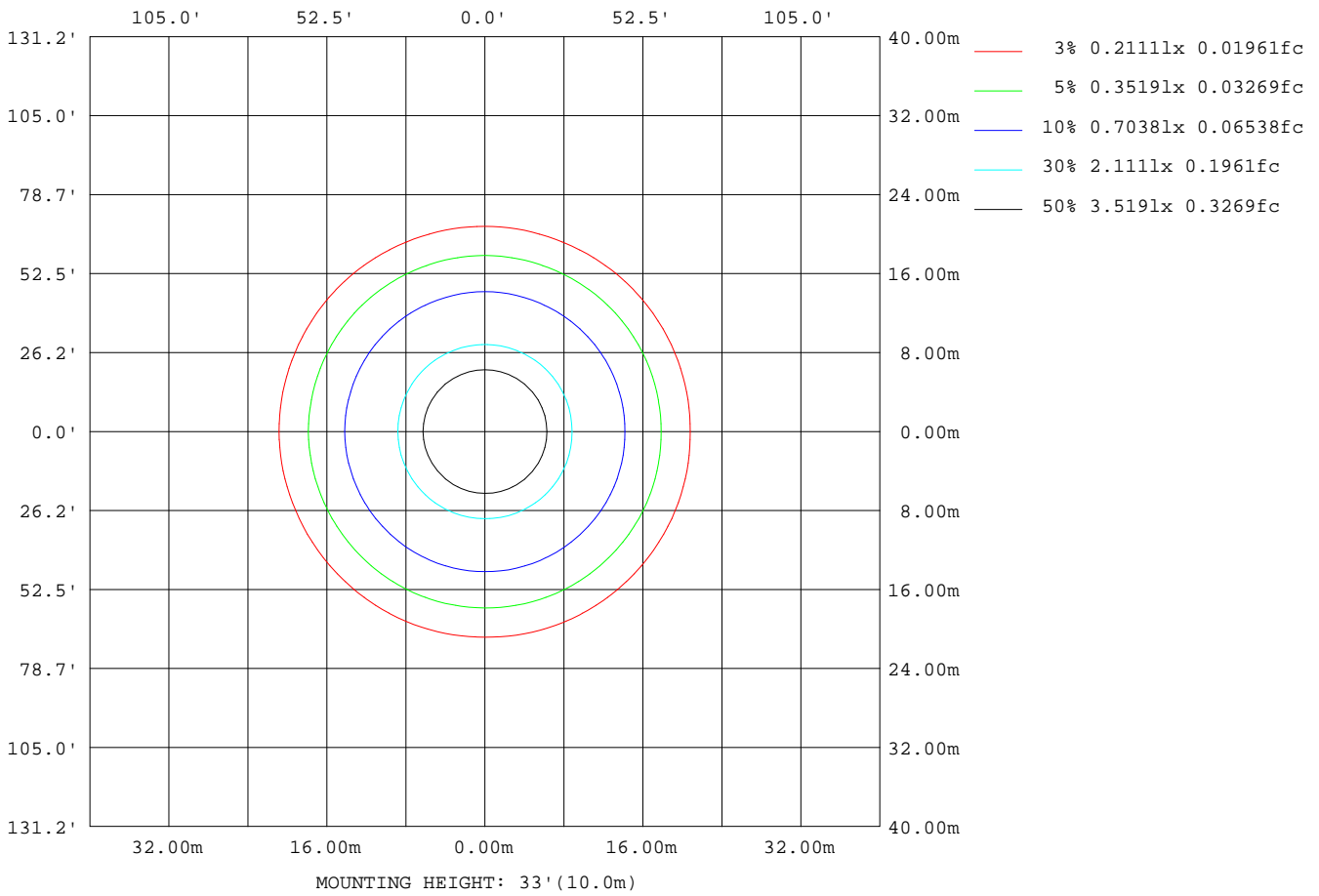
Note:The Curves indicate the illuminated area and the average illumination when the luminaire is at different distance.

C Range: 0 - 360DEG
C Interval: 22.5DEG
Test Speed: HIGH
Temperature:24.3DEG
Operators:Water
Test Date:2025-03-29

γ Range: 0 - 180DEG
γ Interval: 1.0DEG
Test System:EVERFINE GO-R5000_V2 SYSTEM V2.00.446
Humidity:48%
Test Distance:2.519m [K=1.0000]
Remarks:

ISOLUX DIAGRAM

Test:U:120.05V I:0.2047A P:24.220W PF:0.9856 Freq:60.00Hz Lamp Flux:2011.13x1 lm		
NAME: ASD-MPR-12D24WH-EM	TYPE: N/A	WEIGHT: N/A
SPEC.: 6000K	DIM.: N/A	SERIAL No.: N/A
MFR.: ASD Lighting Corp	SUR.: N/A	Shielding Angle: N/A



C Range: 0 - 360DEG
 C Interval: 22.5DEG
 Test Speed: HIGH
 Temperature:24.3DEG
 Operators:Water
 Test Date:2025-03-29

γ Range: 0 - 180DEG
 γ Interval: 1.0DEG
 Test System:EVERFINE GO-R5000_V2 SYSTEM V2.00.446
 Humidity:48%
 Test Distance:2.519m [K=1.0000]
 Remarks:

LED Avg.L Report

Test:U:120.05V I:0.2047A P:24.220W PF:0.9856 Freq:60.00Hz Lamp Flux:2011.13x1 lm		
NAME: ASD-MPR-12D24WH-EM	TYPE: N/A	WEIGHT: N/A
SPEC.: 6000K	DIM.: N/A	SERIAL No.: N/A
MFR.: ASD Lighting Corp	SUR.: N/A	Shielding Angle: N/A

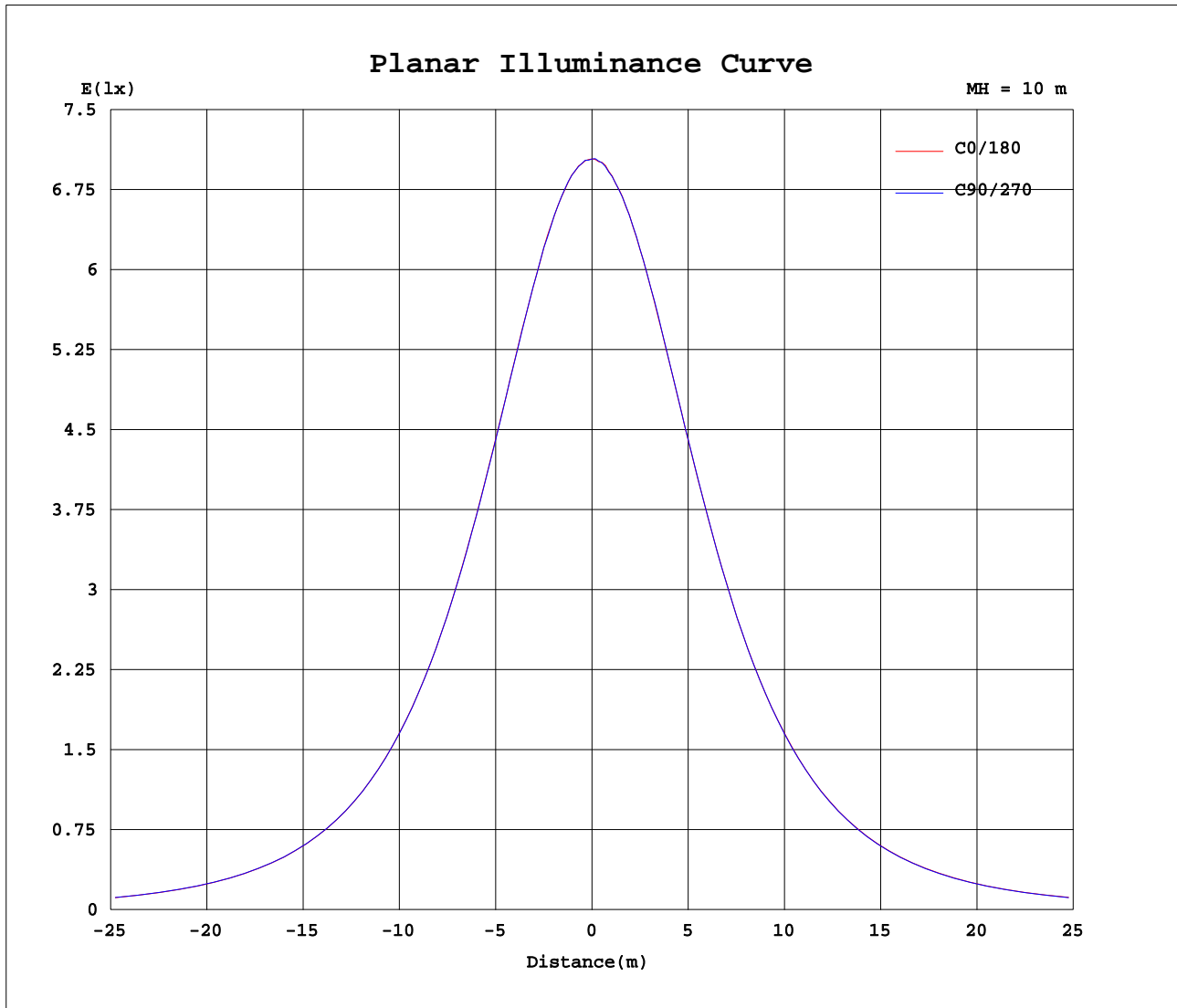
AvgL	cd/m2
L_0~180(65)av	10066
L_0~180(75)av	8868
L_0~180(85)av	6258
L_90~270(65)av	10037
L_90~270(75)av	8875
L_90~270(85)av	6755
L_45(65)av	10050
L_45(75)av	8887
L_45(85)av	6491

Standard: GB/T 29293-2012

C Range: 0 - 360DEG
 C Interval: 22.5DEG
 Test Speed: HIGH
 Temperature:24.3DEG
 Operators:Water
 Test Date:2025-03-29

γ Range: 0 - 180DEG
 γ Interval: 1.0DEG
 Test System:EVERFINE GO-R5000_V2 SYSTEM V2.00.446
 Humidity:48%
 Test Distance:2.519m [K=1.0000]
 Remarks:

Planar Illuminance Curve



C Range: 0 - 360DEG
 C Interval: 22.5DEG
 Test Speed: HIGH
 Temperature: 24.3DEG
 Operators: Water
 Test Date: 2025-03-29

γ Range: 0 - 180DEG
 γ Interval: 1.0DEG
 Test System: EVERFINE GO-R5000_V2 SYSTEM V2.00.446
 Humidity: 48%
 Test Distance: 2.519m [K=1.0000]
 Remarks:

LUMINOUS DISTRIBUTION INTENSITY DATA

Test:U:120.05V I:0.2047A P:24.220W PF:0.9856 Freq:60.00Hz Lamp Flux:2011.13x1 lm		
NAME:ASD-MPR-12D24WH-EM	TYPE: N/A	WEIGHT: N/A
SPEC.: 6000K	DIM.: N/A	SERIAL No.: N/A
MFR.: ASD Lighting Corp	SUR.: N/A	Shielding Angle: N/A

Table--1

UNIT: cd

C(DEG) γ (DEG)	0	22.5	45	67.5	90	112.5	135	157.5	180	202.5	225	247.5	270	292.5	315	337.5			
0	704	704	704	704	704	704	704	704	704	704	704	704	704	704	704	704			
5	700	701	700	702	701	700	700	700	700	700	700	701	699	699	700	701			
10	691	692	691	693	691	690	689	690	690	689	690	691	691	690	690	692			
15	675	677	675	677	675	674	673	672	675	675	675	674	675	674	676	675			
20	654	654	653	656	653	652	651	652	652	652	653	653	653	652	653	655			
25	626	628	627	627	625	625	624	623	626	624	624	624	625	624	627	628			
30	594	594	594	595	592	592	589	590	594	591	593	592	593	592	593	594			
35	556	557	557	558	555	554	552	551	556	554	555	554	555	554	555	557			
40	513	516	515	516	513	512	509	511	513	512	512	512	512	512	514	514			
45	468	471	469	470	467	466	464	465	468	467	467	467	466	466	467	469			
50	418	421	420	421	418	417	415	415	417	417	418	417	416	415	418	419			
55	365	368	367	367	365	364	361	362	365	365	364	364	364	363	365	367			
60	309	313	312	313	310	309	306	307	310	309	310	308	308	307	309	310			
65	252	255	255	256	253	253	249	250	254	253	253	251	251	249	252	253			
70	192	197	197	198	195	194	192	192	196	195	195	193	193	190	192	194			
75	134	138	139	140	138	137	134	135	139	138	138	136	135	133	134	135			
80	78.8	82.8	84.6	86.1	84.0	83.1	80.9	80.6	84.1	83.6	83.8	82.0	80.9	79.1	79.3	80.2			
85	29.3	33.0	34.5	37.6	36.3	36.2	33.3	33.0	35.5	34.0	35.1	33.6	33.6	31.4	31.5	30.9			
90	0.00	0.00	0.00	0.00	0.00	0.00	0.00	0.00	0.00	0.00	0.00	0.00	0.00	0.00	0.00	0.00			
95	0.00	0.00	0.00	0.00	0.00	0.00	0.00	0.00	0.00	0.00	0.00	0.00	0.00	0.00	0.00	0.00			
100	0.00	0.00	0.00	0.00	0.00	0.00	0.00	0.00	0.00	0.00	0.00	0.00	0.00	0.00	0.00	0.00			
105	0.00	0.00	0.00	0.00	0.00	0.00	0.00	0.00	0.00	0.00	0.00	0.00	0.00	0.00	0.00	0.00			
110	0.00	0.00	0.00	0.00	0.00	0.00	0.00	0.00	0.00	0.00	0.00	0.00	0.00	0.00	0.00	0.00			
115	0.00	0.00	0.00	0.00	0.00	0.00	0.00	0.00	0.00	0.00	0.00	0.00	0.00	0.00	0.00	0.00			
120	0.00	0.00	0.00	0.00	0.00	0.00	0.00	0.00	0.00	0.00	0.00	0.00	0.00	0.00	0.00	0.00			
125	0.00	0.00	0.00	0.00	0.00	0.00	0.00	0.00	0.00	0.00	0.00	0.00	0.00	0.00	0.00	0.00			
130	0.00	0.00	0.00	0.00	0.00	0.00	0.00	0.00	0.00	0.00	0.00	0.00	0.00	0.00	0.00	0.00			
135	0.00	0.00	0.00	0.00	0.00	0.00	0.00	0.00	0.00	0.00	0.00	0.00	0.00	0.00	0.00	0.00			
140	0.00	0.00	0.00	0.00	0.00	0.00	0.00	0.00	0.00	0.00	0.00	0.00	0.00	0.00	0.00	0.00			
145	0.00	0.00	0.00	0.00	0.00	0.00	0.00	0.00	0.00	0.00	0.00	0.00	0.00	0.00	0.00	0.00			
150	0.00	0.00	0.00	0.00	0.00	0.00	0.00	0.00	0.00	0.00	0.00	0.00	0.00	0.00	0.00	0.00			
155	0.00	0.00	0.00	0.00	0.00	0.00	0.00	0.00	0.00	0.00	0.00	0.00	0.00	0.00	0.00	0.00			
160	0.00	0.00	0.00	0.00	0.00	0.00	0.00	0.00	0.00	0.00	0.00	0.00	0.00	0.00	0.00	0.00			
165	0.00	0.00	0.00	0.00	0.00	0.00	0.00	0.00	0.00	0.00	0.00	0.00	0.00	0.00	0.00	0.00			
170	0.00	0.00	0.00	0.00	0.00	0.00	0.00	0.00	0.00	0.00	0.00	0.00	0.00	0.00	0.00	0.00			
175	0.00	0.00	0.00	0.00	0.00	0.00	0.00	0.00	0.00	0.00	0.00	0.00	0.00	0.00	0.00	0.00			
180	0.00	0.00	0.00	0.00	0.00	0.00	0.00	0.00	0.00	0.00	0.00	0.00	0.00	0.00	0.00	0.00			

C Range: 0 - 360DEG
 C Interval: 22.5DEG
 Test Speed: HIGH
 Temperature:24.3DEG
 Operators:Water
 Test Date:2025-03-29

γ Range: 0 - 180DEG
 γ Interval: 1.0DEG
 Test System:EVERFINE GO-R5000_V2 SYSTEM V2.00.446
 Humidity:48%
 Test Distance:2.519m [K=1.0000]
 Remarks: