



LED WAFER ROUND

► **DESIGN** - LED WAFER ROUND with a classic, low-profile design is an ideal solution for low ceilings. This fixture has a J-box, plug & twist connector, spring-loaded clips, and requires only 2" of ceiling space, making the installation process quick and easy. The acrylic lens with a 110° beam angle and CRI90+ grants you even light. It is designed to operate on 120V circuits, it offers smooth dimming capabilities from 10% to 100%.

► **VARIETY** - This fixture is available in round shapes, with sizes of 3", 4", 6", 8", and 12". Choose from White, Black, Nickel, or Bronze finishes.

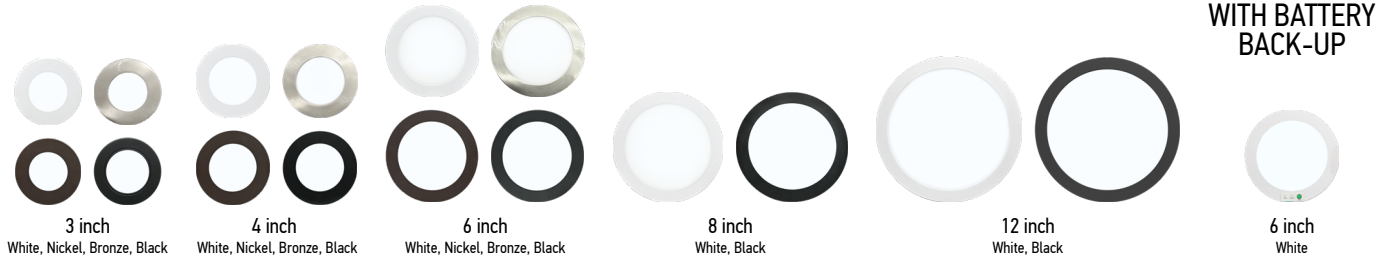
► **COLOR SELECTABLE** - You can choose either a 2700K soft white, 3000K warm white, 3500K neutral white, 4000K cool white, or 5000K daylight color temperature.

► **INSTALLATION** - This fixture is IC rated so there is no can or any other housing required. It is also Wet Locations rated, making it perfect for kitchen, bathroom or any other common areas.

► **ADVANTAGES** - With a lifespan of 54,000 hours, these fixtures are made to last decades under normal operation! ASD provides a 5-year limited warranty along with UL, ETL, Energy Star and T24 certifications to guarantee top quality products and safety!

► **OPTIONS:**

► **MODEL WITH BATTERY BACK-UP** - The built-in battery back-up provides 90 minutes of power in case of emergency.



PRODUCT PRESENTATION:

Model	Size	Power	Voltage	Dimming	Lumens	CCT	Finish	Dimensions	Pre-installed	Certification
JBR ROUND										
ASD-JBR-3D6AC-WH	3 inch	6 W	120V	TRIAC	538lm	2,700/3,000/3,500/4,000/5,000K	White	3-1/4" x 3-1/4" x 5/8"	-	UL (E473854), ES, T24, JA8
ASD-JBR-3D6AC-NK	3 inch	6 W	120V	TRIAC	538lm	2,700/3,000/3,500/4,000/5,000K	Nickel	3-1/4" x 3-1/4" x 5/8"	-	UL (E473854), ES, T24, JA8
ASD-JBR-3D6AC-BR	3 inch	6 W	120V	TRIAC	538lm	2,700/3,000/3,500/4,000/5,000K	Bronze	3-1/4" x 3-1/4" x 5/8"	-	UL (E473854), ES, T24, JA8
ASD-JBR-3D6AC-BK	3 inch	6 W	120V	TRIAC	538lm	2,700/3,000/3,500/4,000/5,000K	Black	3-1/4" x 3-1/4" x 5/8"	-	UL (E473854), ES, T24, JA8
ASD-JBR-3D6AC-BK-6PACK	3 inch	6 W	120V	TRIAC	538lm	2,700/3,000/3,500/4,000/5,000K	Black	3-1/4" x 3-1/4" x 5/8"	-	UL (E473854), ES, T24, JA8
ASD-JBR-3D6AC-WH-12PACK	3 inch	6 W	120V	TRIAC	538lm	2,700/3,000/3,500/4,000/5,000K	White	3-1/4" x 3-1/4" x 5/8"	-	UL (E473854), ES, T24, JA8
ASD-JBR-3D6AC-BK-12PACK	3 inch	6 W	120V	TRIAC	538lm	2,700/3,000/3,500/4,000/5,000K	Black	3-1/4" x 3-1/4" x 5/8"	-	UL (E473854), ES, T24, JA8
ASD-JBR-4D12AC-WH	4 inch	12 W	120V	TRIAC	893lm	2,700/3,000/3,500/4,000/5,000K	White	4-11/16" x 4-11/16" x 5/8"	-	UL (E473854), T24, JA8
ASD-JBR-4D12AC-BR	4 inch	12 W	120V	TRIAC	893lm	2,700/3,000/3,500/4,000/5,000K	Bronze	4-11/16" x 4-11/16" x 5/8"	-	UL (E473854), T24, JA8
ASD-JBR-4D12AC-BK	4 inch	12 W	120V	TRIAC	893lm	2,700/3,000/3,500/4,000/5,000K	Black	4-11/16" x 4-11/16" x 5/8"	-	UL (E473854), T24, JA8
ASD-JBR-4D12AC-WH-6PACK	4 inch	12 W	120V	TRIAC	893lm	2,700/3,000/3,500/4,000/5,000K	White	4-11/16" x 4-11/16" x 5/8"	-	UL (E473854), T24, JA8
ASD-JBR-4D12AC-NK-6PACK	4 inch	12 W	120V	TRIAC	893lm	2,700/3,000/3,500/4,000/5,000K	Nickel	4-11/16" x 4-11/16" x 5/8"	-	UL (E473854), T24, JA8
ASD-JBR-4D12AC-BK-6PACK	4 inch	12 W	120V	TRIAC	893lm	2,700/3,000/3,500/4,000/5,000K	Black	4-11/16" x 4-11/16" x 5/8"	-	UL (E473854), T24, JA8
ASD-JBR-4D12AC-WH-12PACK	4 inch	12 W	120V	TRIAC	893lm	2,700/3,000/3,500/4,000/5,000K	White	4-11/16" x 4-11/16" x 5/8"	-	UL (E473854), T24, JA8
ASD-JBR-4D12AC-BK-12PACK	4 inch	12 W	120V	TRIAC	893lm	2,700/3,000/3,500/4,000/5,000K	Black	4-11/16" x 4-11/16" x 5/8"	-	UL (E473854), T24, JA8
ASD-JBR-6D15AC-WH	6 inch	15 W	120V	TRIAC	1,378lm	2,700/3,000/3,500/4,000/5,000K	White	6-5/8" x 6-5/8" x 5/8"	-	UL (E473854), ES, T24, JA8
ASD-JBR-6D15AC-BR	6 inch	15 W	120V	TRIAC	1,378lm	2,700/3,000/3,500/4,000/5,000K	Bronze	6-5/8" x 6-5/8" x 5/8"	-	UL (E473854), ES, T24, JA8

For most up-to-date spec sheets please refer to asd-lighting.com

ASD LIGHTING CORP

E-mail: orders@asd-lighting.com | Web site: www.asd-lighting.com





LED WAFER ROUND

Model	Size	Power	Voltage	Dimming	Lumens	CCT	Finish	Dimensions	Pre-installed	Certification
ASD-JBR-6D15AC-BK	6 inch	15 W	120V	TRIAC	1,378lm	2,700/3,000/3,500/4,000/5,000K	Black	6-5/8" x 6-5/8" x 5/8"	-	UL (E473854), ES, T24, JA8
ASD-JBR-6D15AC-WH-6PACK	6 inch	15 W	120V	TRIAC	1,378lm	2,700/3,000/3,500/4,000/5,000K	White	6-5/8" x 6-5/8" x 5/8"	-	UL (E473854), ES, T24, JA8
ASD-JBR-6D15AC-NK-6PACK	6 inch	15 W	120V	TRIAC	1,378lm	2,700/3,000/3,500/4,000/5,000K	Nickel	6-5/8" x 6-5/8" x 5/8"	-	UL (E473854), ES, T24, JA8
ASD-JBR-6D15AC-BZ-6PACK	6 inch	15 W	120V	TRIAC	1,378lm	2,700/3,000/3,500/4,000/5,000K	Bronze	6-5/8" x 6-5/8" x 5/8"	-	UL (E473854), ES, T24, JA8
ASD-JBR-6D15AC-BK-6PACK	6 inch	15 W	120V	TRIAC	1,378lm	2,700/3,000/3,500/4,000/5,000K	Black	6-5/8" x 6-5/8" x 5/8"	-	UL (E473854), ES, T24, JA8
ASD-JBR-6D15AC-WH-12PACK	6 inch	15 W	120V	TRIAC	1,378lm	2,700/3,000/3,500/4,000/5,000K	White	6-5/8" x 6-5/8" x 5/8"	-	UL (E473854), ES, T24, JA8
ASD-JBR-6D15AC-BK-12PACK	6 inch	15 W	120V	TRIAC	1,378lm	2,700/3,000/3,500/4,000/5,000K	Black	6-5/8" x 6-5/8" x 5/8"	-	UL (E473854), ES, T24, JA8
ASD-JBR-8D20AC-WH	8 inch	20 W	120V	TRIAC	1,746lm	2,700/3,000/3,500/4,000/5,000K	White	8-11/16" x 8-11/16" x 5/8"	-	UL (E473854), ES, T24, JA8
ASD-JBR-8D20AC-BK	8 inch	20 W	120V	TRIAC	1,746lm	2,700/3,000/3,500/4,000/5,000K	Black	8-11/16" x 8-11/16" x 5/8"	-	UL (E473854), ES, T24, JA8
ASD-JBR-12D24AC-WH	12 inch	24 W	120V	TRIAC	2,169lm	2,700/3,000/3,500/4,000/5,000K	White	11-5/8" x 11-5/8" x 5/8"	-	UL (E473854), T24, JA8
ASD-JBR-12D24AC-BK	12 inch	24 W	120V	TRIAC	2,169lm	2,700/3,000/3,500/4,000/5,000K	Black	11-5/8" x 11-5/8" x 5/8"	-	UL (E473854), T24, JA8
JBR ROUND WITH BATTERY BACK-UP										
ASD-JBR-6D15WH-EM	6 inch	15 W	120V	TRIAC	1,287lm	2,700/3,000/3,500/4,000/5,000K	White	6-5/8" x 6-5/8" x 3/4"	4.2W battery back-up	ETL (4008281)

TECHNICAL PARAMETERS:

Model	Work environment	Operating temperature	Power factor	Surge protection	Housing	Lens	CRI
JBR ROUND							
ASD-JBR-3D6AC-WH	Wet location	-4°F to 104°F (-20°C to 40°C)	> 0.9	2kV	Aluminum	PC	> 90
ASD-JBR-3D6AC-WH-12PACK	Wet location	-4°F to 104°F (-20°C to 40°C)	> 0.9	2kV	Aluminum	PC	> 90
ASD-JBR-3D6AC-NK	Wet location	-4°F to 104°F (-20°C to 40°C)	> 0.9	2kV	Aluminum	PC	> 90
ASD-JBR-3D6AC-BR	Wet location	-4°F to 104°F (-20°C to 40°C)	> 0.9	2kV	Aluminum	PC	> 90
ASD-JBR-3D6AC-BK	Wet location	-4°F to 104°F (-20°C to 40°C)	> 0.9	2kV	Aluminum	PC	> 90
ASD-JBR-3D6AC-BK-6PACK	Wet location	-4°F to 104°F (-20°C to 40°C)	> 0.9	2kV	Aluminum	PC	> 90
ASD-JBR-3D6AC-BK-12PACK	Wet location	-4°F to 104°F (-20°C to 40°C)	> 0.9	2kV	Aluminum	PC	> 90
ASD-JBR-4D12AC-WH	Wet location	-4°F to 104°F (-20°C to 40°C)	> 0.9	2kV	Aluminum	PC	> 90
ASD-JBR-4D12AC-WH-6PACK	Wet location	-4°F to 104°F (-20°C to 40°C)	> 0.9	2kV	Aluminum	PC	> 90
ASD-JBR-4D12AC-WH-12PACK	Wet location	-4°F to 104°F (-20°C to 40°C)	> 0.9	2kV	Aluminum	PC	> 90
ASD-JBR-4D12AC-NK-6PACK	Wet location	-4°F to 104°F (-20°C to 40°C)	> 0.9	2kV	Aluminum	PC	> 90
ASD-JBR-4D12AC-BR	Wet location	-4°F to 104°F (-20°C to 40°C)	> 0.9	2kV	Aluminum	PC	> 90
ASD-JBR-4D12AC-BK	Wet location	-4°F to 104°F (-20°C to 40°C)	> 0.9	2kV	Aluminum	PC	> 90
ASD-JBR-4D12AC-BK-6PACK	Wet location	-4°F to 104°F (-20°C to 40°C)	> 0.9	2kV	Aluminum	PC	> 90
ASD-JBR-4D12AC-BK-12PACK	Wet location	-4°F to 104°F (-20°C to 40°C)	> 0.9	2kV	Aluminum	PC	> 90
ASD-JBR-6D15AC-WH	Wet location	-4°F to 104°F (-20°C to 40°C)	> 0.9	2kV	Aluminum	PC	> 90
ASD-JBR-6D15AC-WH-6PACK	Wet location	-4°F to 104°F (-20°C to 40°C)	> 0.9	2kV	Aluminum	PC	> 90
ASD-JBR-6D15AC-WH-12PACK	Wet location	-4°F to 104°F (-20°C to 40°C)	> 0.9	2kV	Aluminum	PC	> 90
ASD-JBR-6D15AC-NK-6PACK	Wet location	-4°F to 104°F (-20°C to 40°C)	> 0.9	2kV	Aluminum	PC	> 90
ASD-JBR-6D15AC-BR	Wet location	-4°F to 104°F (-20°C to 40°C)	> 0.9	2kV	Aluminum	PC	> 90
ASD-JBR-6D15AC-BZ-6PACK	Wet location	-4°F to 104°F (-20°C to 40°C)	> 0.9	2kV	Aluminum	PC	> 90
ASD-JBR-6D15AC-BK	Wet location	-4°F to 104°F (-20°C to 40°C)	> 0.9	2kV	Aluminum	PC	> 90
ASD-JBR-6D15AC-BK-6PACK	Wet location	-4°F to 104°F (-20°C to 40°C)	> 0.9	2kV	Aluminum	PC	> 90
ASD-JBR-6D15AC-BK-12PACK	Wet location	-4°F to 104°F (-20°C to 40°C)	> 0.9	2kV	Aluminum	PC	> 90
ASD-JBR-8D20AC-WH	Wet location	-4°F to 104°F (-20°C to 40°C)	> 0.9	2kV	Aluminum	PC	> 90
ASD-JBR-8D20AC-BK	Wet location	-4°F to 104°F (-20°C to 40°C)	> 0.9	2kV	Aluminum	PC	> 90
ASD-JBR-12D24AC-WH	Wet location	-4°F to 104°F (-20°C to 40°C)	> 0.9	2kV	Aluminum	PC	> 90
ASD-JBR-12D24AC-BK	Wet location	-4°F to 104°F (-20°C to 40°C)	> 0.9	2kV	Aluminum	PC	> 90
JBR ROUND WITH BATTERY BACK-UP							
ASD-JBR-6D15WH-EM	Wet location	41°F to 104°F (5°C to 40°C)	> 0.9	2kV	Aluminum	PC	> 90

DIMMING COMPATIBLE CONTROLS:

Brand	Lutron	Leviton	
Models	CTCL-153PDH-WH	S-600PR-WH	DB33K1
	DVW-603PGH-WH	CTCL-153P	1A2305
	MIR-600THW-WH	DV-600P	1F4205
	MACL-153M-WH	NT-1000	6633-P
	CT-603PGH-WH	S-603P	VP106
	DVCL-153P-WH	S-600P	IPL06
	SLV-600P-WH	4X603	6683
			6674
		6672	

DIMENSIONS JUNCTION BOX FOR JBR-AC:

Fixture	Jbox size inch	Jbox size mm
3 inch	3-3/4" x 2-5/16" x 1-1/4"	95mm x 59mm x 32mm
4, 6, 8, 12 inch	4-8/16" x 2-11/16" x 1-3/8"	115mm x 68mm x 35mm

For most up-to-date spec sheets please refer to asd-lighting.com

ASD[®] LED WAFER ROUND

PACKAGE CONTENTS:

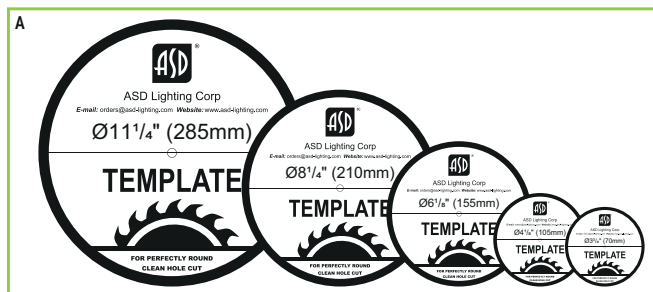
Description	Quantity
LED Round Wafer Recessed Mini Panel	1 (6 for 6PACK, 6P; 12 for 12PACK, 12P)
Template for 3, 4, 6, 8 or 12 inch (A)	1
Box	1

TEMPLATE SIZE FOR:

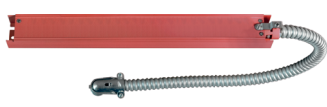
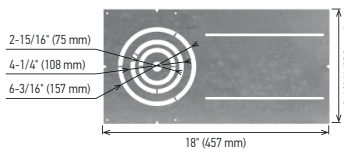
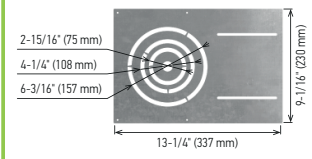
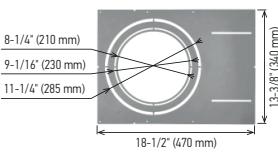

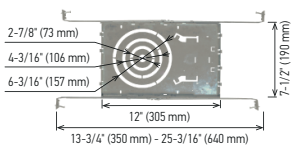
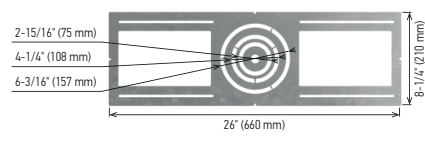


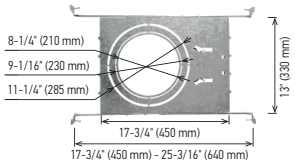
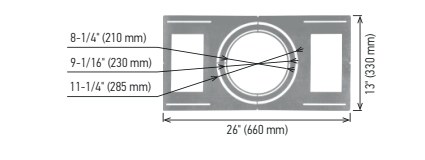
JBR-AC
JBR-EM

Fixture	Template size
3 inch	3-3/4" (70 mm)
4 inch	4-1/8" (105 mm)
6 inch	6-1/8" (155 mm)
8 inch	8-1/4" (210 mm)
12 inch	11-1/4" (285 mm)

Fixture	Template size
6 inch	6-1/8" (155 mm)



ACCESSORIES (sold separately):

ASD Battery back-up kit 15W ASD-EMA15 	New construction flat mounting plate with asymmetric round holes 3-4-6" ASD-MPLR18-346-FA 	New construction flat mounting plate with asymmetric round holes 3-4-6" ASD-MPLR-346-FA 	New construction flat mounting plate with asymmetric round holes 8-10-12" ASD-MPLR-81012-FA 
Battery back-up kit 8W BLD-HM08D 	New construction mounting plate with round holes and sliding clips 3-4-6" ASD-MPLR-346-SC 	New construction flat mounting plate with symmetric round holes 3-4-6" ASD-MPLR-346-FS 	Extension cord 3PIN 10" ASD-EC-10A 20" ASD-EC-20A 
Battery back-up kit 15W BLD-HM15D 	New construction mounting plate with round holes and sliding clips 8-10-12" ASD-MPLR-81012-SC 	New construction flat mounting plate with symmetric round holes 8-10-12" ASD-MPLR-81012-FS 	

ACCESSORY COMPATIBILITY LIST:

Model	Accessories										
	ASD Battery back-up kit 15W ASD-EMA15	Battery back-up kit 8W BLD-HM08D	Battery back-up kit 15W BLD-HM15D	New construction flat mounting plate with asymmetric round holes 3-4-6" ASD-MPLR-346-FA	New construction flat mounting plate 18" with asymmetric round holes 3-4-6" ASD-MPLR18-346-FA	New construction flat mounting plate with asymmetric round holes 8-10-12" ASD-MPLR-81012-FA	New construction flat mounting plate with symmetric round holes 3-4-6" ASD-MPLR-346-FS	New construction flat mounting plate with symmetric round holes 8-10-12" ASD-MPLR-81012-FS	New construction mounting plate with round holes and sliding clips 3-4-6" ASD-MPLR-346-SC	New construction mounting plate with round holes and sliding clips 8-10-12" ASD-MPLR-81012-SC	Extension cord 3PIN ASD-EC-10A ASD-EC-20A
ASD-JBR	3"		•	•	•	•	•	•	•	•	•
	4"	•		•	•	•	•	•	•	•	•
	6"	•		•	•	•	•	•	•	•	•
	8"				•	•	•	•	•	•	•
	12"				•	•	•	•	•	•	•

For most up-to-date spec sheets please refer to asd-lighting.com

ASD[®] LED WAFER ROUND

INSTALLATION GUIDE

IMPORTANT SAFETY INFORMATION:

Please read all the instructions below before installation!

- ▶ Make sure that the supply voltage corresponds to the rated product voltage.
- ▶ The product must be installed by a qualified electrician in accordance with the National Electrical Code and corresponding local codes.
- ▶ If the product is damaged, do not use it.

⚠ WARNING

Risk of personal injury – read and follow all warnings and installation instructions. Keep or give to the owner for future reference.

Risk of cuts: Wear gloves to prevent cuts or abrasions when removing from carton, handling, installing, and maintaining this product.

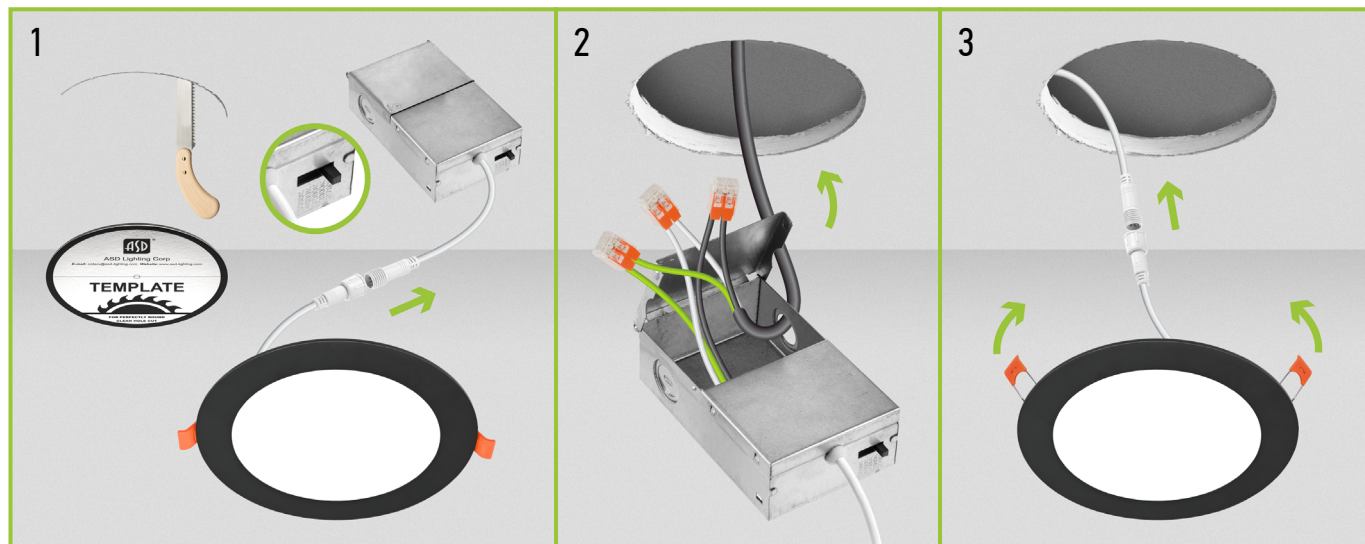
Risk of electric shock: This product must be installed in accordance with the applicable installation code by a person familiar with the construction and operation of the product and the hazards involved.

Risk of Fire: Minimum 194°F supply conductors. Consult a qualified electrician to ensure correct branch circuit conductor.

ASD[®] assumes no responsibility for claims arising out of improper or careless installation or handling of this product.

INSTALLATION STEPS:

1. Use template to cut an appropriate sized hole. Disconnect the fixture from the junction box. Choose needed color temperature by adjusting the switch. Close the junction box.
2. Open junction box. Connect the wires: Black to Black, White to White, Copper to Green. Secure the connection with quick connector.
3. Insert the junction box into the cut hole, leaving the connection cable outside. Connect the fixture to the Junction box inserting the cable and securing it with a cap. Push the spring loaded clips upwards and insert the fixture base into the mounting hole. Release the clips, so the fixture fits securely.

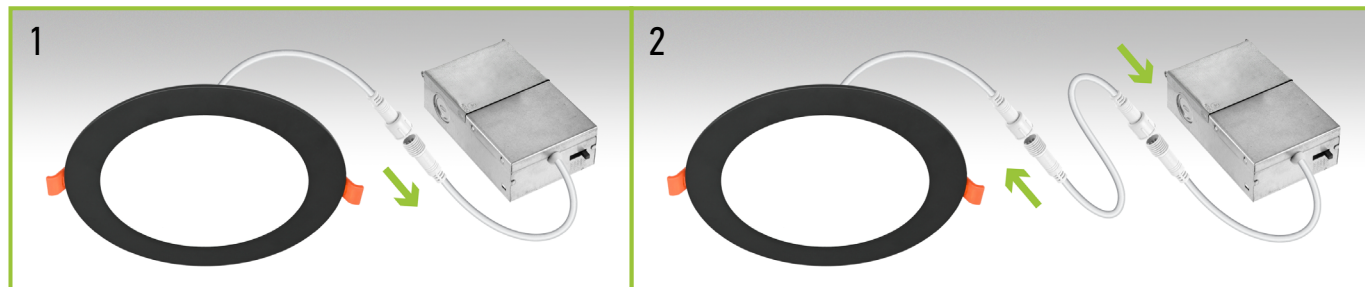


* The fixture is suitable for ceiling thickness less than 0.5 inch.

EXTENSION CORD INSTALLATION:

ASD-EC-10A ASD-EC-20A sold separately

1. Disconnect the LED Mini Panel cable from the Junction box cable.
2. Connect one end of the Extension Cord to the LED Mini Panel cable, and the other end of the Extension Cord to the Junction box cable.



For most up-to-date spec sheets please refer to asd-lighting.com

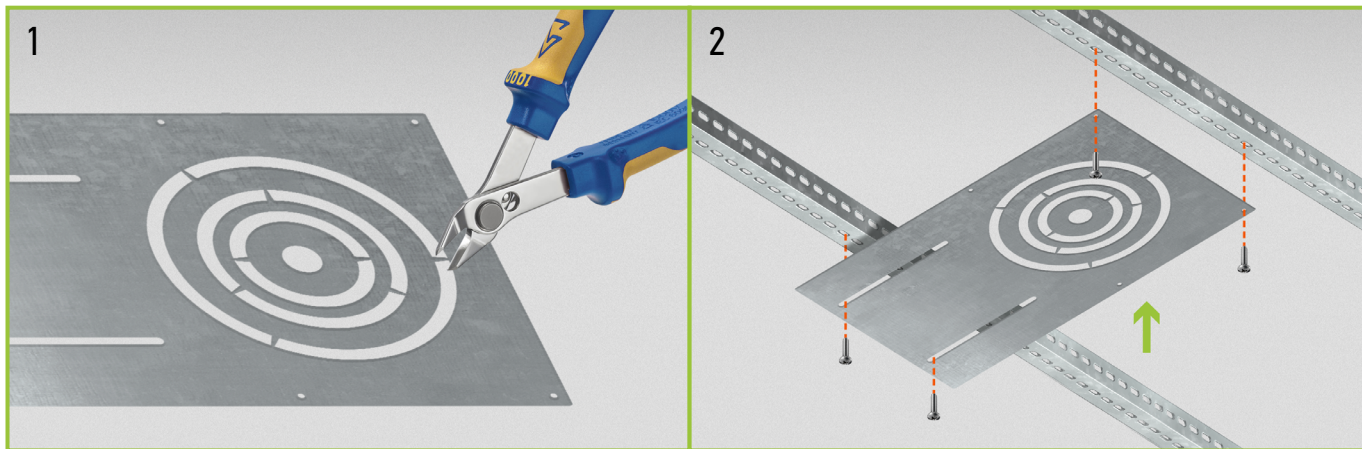


LED WAFER ROUND

MOUNTING PLATE INSTALLATION:

- ASD-MPLR-346-FA ASD-MPLR18-346-FA ASD-MPLR-81012-FA
ASD-MPLR-346-FS ASD-MPLR-81012-FS ASD-MPLR-81012-SC ASD-MPLR-346-SC sold separately

1. Remove the metal ring from the mounting plate according to the size of fixture.
2. Place the mounting plate and secure its position with screws on the beams.



BUILT-IN BATTERY BACK-UP INFORMATION

Specifications	
Input voltage	AC120V, 50/60Hz
AC input current	200mA max
AC input power rating	21W max
Output current (voltage)	≤390mA
Output power	4.2W max
Lumens	345 lm
Emergency time	90 minutes
Indicator light	Illuminated test switch
Battery	3.7V 4500mAh
Battery charging current	290mA
Charging time	24 hours
Temperature rating (ambient)	5°C to 50°C
Warranty	Five years warranty

For most up-to-date spec sheets please refer to asd-lighting.com

ASD LIGHTING CORP

E-mail: orders@asd-lighting.com | Web site: www.asd-lighting.com





LED WAFER ROUND

ORDERING INFORMATION

Model	Product dimensions	Weight	Pcs. (pack) per carton	Carton size	Carton weight	UPC	GTIN 14
JBR ROUND							
ASD-JBR-3D6AC-WH	3-1/4" x 3-1/4" x 5/8"	0.5 lbs (0.2 kg)	6	9.8" x 9.5" x 4.1"	4.0 lbs	81005073904	10810050739044
ASD-JBR-3D6AC-NK	3-1/4" x 3-1/4" x 5/8"	0.5 lbs (0.2 kg)	6	9.8" x 9.5" x 4.1"	4.0 lbs	81005073906	10810050739068
ASD-JBR-3D6AC-BR	3-1/4" x 3-1/4" x 5/8"	0.5 lbs (0.2 kg)	6	9.8" x 9.5" x 4.1"	4.0 lbs	81012811507	10810128115077
ASD-JBR-3D6AC-BK	3-1/4" x 3-1/4" x 5/8"	0.5 lbs (0.2 kg)	6	9.8" x 9.5" x 4.1"	4.0 lbs	81005073905	10810050739051
ASD-JBR-3D6AC-BK-6PACK	3-1/4" x 3-1/4" x 5/8"	2.2 lbs (1 kg)	12 (2)	17.1" x 10" x 4.5"	6.2 lbs	81005073745	10810050737453
ASD-JBR-3D6AC-WH-12PACK	3-1/4" x 3-1/4" x 5/8"	4.8 lbs (2.2 kg)	12 (1)	15.4" x 9.5" x 3.9"	5.7 lbs	81012811644	-
ASD-JBR-3D6AC-BK-12PACK	3-1/4" x 3-1/4" x 5/8"	4.8 lbs (2.2 kg)	12 (1)	15.4" x 9.5" x 3.9"	5.7 lbs	81012811643	-
ASD-JBR-4D12AC-WH	4-11/16" x 4-11/16" x 5/8"	0.7 lbs (0.3 kg)	6	10.4" x 9.5" x 5.5"	4.9 lbs	81005073907	10810050739075
ASD-JBR-4D12AC-BR	4-11/16" x 4-11/16" x 5/8"	0.7 lbs (0.3 kg)	6	10.4" x 9.5" x 5.5"	4.9 lbs	81012811508	10810128115084
ASD-JBR-4D12AC-BK	4-11/16" x 4-11/16" x 5/8"	0.7 lbs (0.3 kg)	6	10.4" x 9.5" x 5.5"	4.9 lbs	81005073908	10810050739082
ASD-JBR-4D12AC-WH-6PACK	4-11/16" x 4-11/16" x 5/8"	3.7 lbs (1.7 kg)	12 (2)	12.6" x 12.6" x 6.3"	9.3 lbs	81005073719	10810050737194
ASD-JBR-4D12AC-NK-6PACK	4-11/16" x 4-11/16" x 5/8"	3.7 lbs (1.7 kg)	12 (2)	12.6" x 12.6" x 6.3"	9.3 lbs	81005073839	20810050738396
ASD-JBR-4D12AC-BK-6PACK	4-11/16" x 4-11/16" x 5/8"	3.7 lbs (1.7 kg)	12 (2)	12.6" x 12.6" x 6.3"	9.3 lbs	81005073721	10810050737217
ASD-JBR-4D12AC-WH-12PACK	4-11/16" x 4-11/16" x 5/8"	7.7 lbs (3.5 kg)	12 (1)	12" x 11.6" x 5.3"	8.8 lbs	81005073971	-
ASD-JBR-4D12AC-BK-12PACK	4-11/16" x 4-11/16" x 5/8"	7.0 lbs (3.2 kg)	12 (1)	12" x 11.6" x 5.3"	7.4 lbs	81012811649	-
ASD-JBR-6D15AC-WH	6-5/8" x 6-5/8" x 5/8"	0.8 lbs (0.4 kg)	6	14.4" x 9.5" x 7.5"	6.4 lbs	81005073911	10810050739112
ASD-JBR-6D15AC-BR	6-5/8" x 6-5/8" x 5/8"	0.8 lbs (0.4 kg)	6	14.4" x 9.5" x 7.5"	6.4 lbs	81012811757	10810128117576
ASD-JBR-6D15AC-BK	6-5/8" x 6-5/8" x 5/8"	0.8 lbs (0.4 kg)	6	14.4" x 9.5" x 7.5"	6.4 lbs	81005073912	10810050739129
ASD-JBR-6D15AC-WH-6PACK	6-5/8" x 6-5/8" x 5/8"	4.4 lbs (2 kg)	12 (2)	13" x 12.4" x 8"	11.1 lbs	81005073724	10810050737248
ASD-JBR-6D15AC-NK-6PACK	6-5/8" x 6-5/8" x 5/8"	4.4 lbs (2 kg)	12 (2)	13" x 12.4" x 8"	11.1 lbs	81005073840	20810050738402
ASD-JBR-6D15AC-BZ-6PACK	6-5/8" x 6-5/8" x 5/8"	4.4 lbs (2 kg)	12 (2)	13" x 12.4" x 8"	11.1 lbs	81005073891	10810050738917
ASD-JBR-6D15AC-BK-6PACK	6-5/8" x 6-5/8" x 5/8"	4.4 lbs (2 kg)	12 (2)	13" x 12.4" x 8"	11.1 lbs	81005073726	10810050737262
ASD-JBR-6D15AC-WH-12PACK	6-5/8" x 6-5/8" x 5/8"	4.4 lbs (2 kg)	12 (1)	12.4" x 10.8" x 7.3"	9.4 lbs	81005073972	-
ASD-JBR-6D15AC-BK-12PACK	6-5/8" x 6-5/8" x 5/8"	9.2 lbs (4.2 kg)	12 (1)	12.4" x 10.8" x 7.3"	9.4 lbs	81012811650	-
ASD-JBR-8D20AC-WH	8-11/16" x 8-11/16" x 5/8"	1.1 lbs (0.5 kg)	4	9.7" x 9.7" x 9.5"	6.0 lbs	81005073747	10810050737477
ASD-JBR-8D20AC-BK	8-11/16" x 8-11/16" x 5/8"	1.1 lbs (0.5 kg)	4	9.7" x 9.7" x 9.5"	6.0 lbs	81005073748	10810050737484
ASD-JBR-12D24AC-WH	11-5/8" x 11-5/8" x 5/8"	1.5 lbs (0.7 kg)	4	12.4" x 9.6" x 12.4"	7.9 lbs	81005073749	10810050737491
ASD-JBR-12D24AC-BK	11-5/8" x 11-5/8" x 5/8"	1.5 lbs (0.7 kg)	4	12.4" x 9.6" x 12.4"	7.9 lbs	81005073750	10810050737507
JBR ROUND WITH BATTERY BACK-UP							
ASD-JBR-6D15WH-EM	6-5/8" x 6-5/8" x 3/4"	1.4 lbs (0.6 kg)	2	7.76" x 6.30" x 7.48"	3.5 lbs	81012811932	10810128119327

ACCESSORIES:

Model	Product dimensions	Pcs. (pack) per carton	Carton size	Carton weight	UPC	GTIN 14
ASD-EMA15	14-5/8" x 1-5/8" x 1-7/16"	10	20.28" x 15.94" x 12.60"	26.0 lbs	810128117026	10810128117026
BLD-HM08D	10-7/16" x 1-15/16" x 15/16"	10	17.13" x 14.57" x 11.02"	19.6 lbs	810128111508	10810128111505
BLD-HM15D	12-15/16" x 1-7/16" x 15/16"	10	17.80" x 13.46" x 9.45"	25.1 lbs	810050734889	10810050734889
ASD-MPLR-346-FA-6PACK	13-1/4" x 9-1/16" x 1/16"	24 (4)	14.4" x 9.8" x 3.2"	18.1 lbs	810050739344	10810050739341
ASD-MPLR18-346-FA-6PACK	18" x 9-1/16" x 1/16"	24 (4)	18.9" x 9.8" x 3.2"	32.9 lbs	810128112826	10810128112823
ASD-MPLR-81012-FA-6PACK	18-1/2" x 13-3/8" x 1/16"	24 (4)	19.5" x 14.2" x 3.2"	37.2 lbs	810128111553	10810128111550
ASD-MPLR-346-FS-6PACK	26" x 8-1/4" x 1/16"	24 (4)	27" x 9.1" x 3.2"	21 lbs	810050739351	10810050739358
ASD-MPLR-81012-FS-6PACK	26" x 13" x 1/16"	24 (4)	27" x 13.8" x 3.2"	42.3 lbs	810128111577	10810128111574
ASD-MPLR-346-SC-6PACK	14-3/8" x 10-9/16" x 1-5/8"	12 (2)	17.3" x 11.9" x 13.4"	17 lbs	810050739337	10810050739334
ASD-MPLR-81012-SC-6PACK	17-11/16" x 13" x 1-9/16"	12 (2)	21.3" x 17.5" x 15.6"	24 lbs	810128111607	10810128111604
ASD-EC-10A-6PACK	10"	60 (10)	7.7" x 6.1" x 5.3"	1.8 lbs	810128110471	10810128110478
ASD-EC-20A-6PACK	20"	60 (10)	7.7" x 6.1" x 5.3"	3.1 lbs	810128110488	10810128110485

For most up-to-date spec sheets please refer to asd-lighting.com