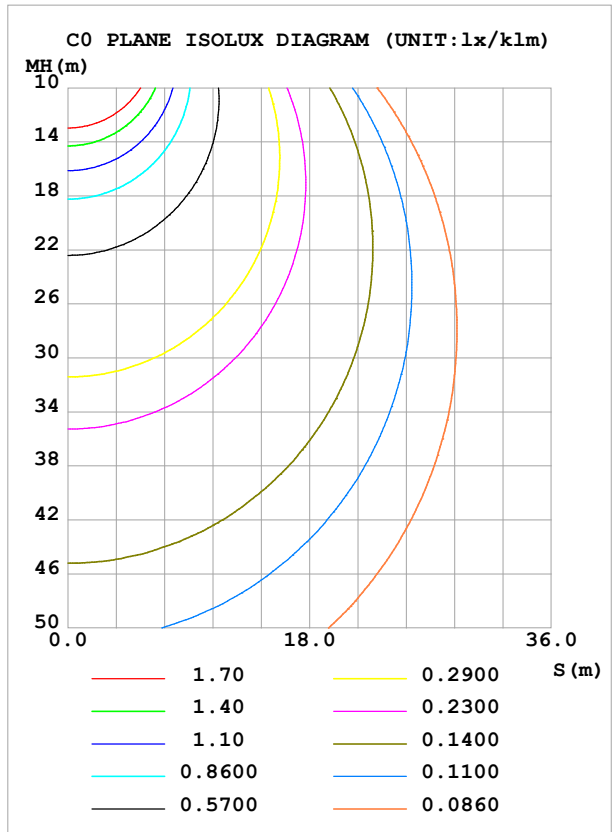
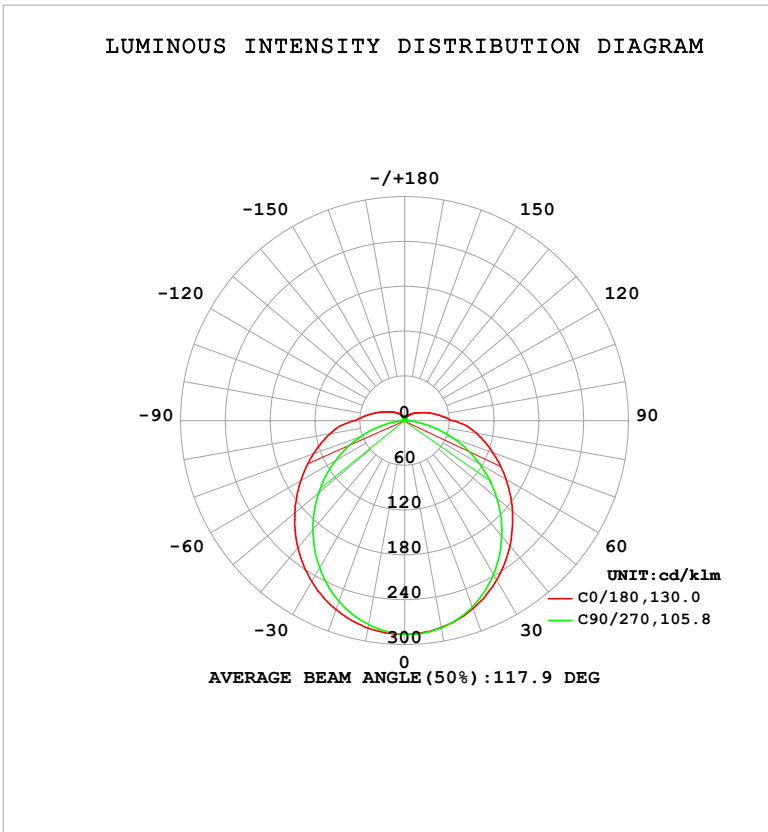


LUMINAIRE PHOTOMETRIC TEST REPORT

Test:U:119.94V I:0.3155A P:37.705W PF:0.9963 Freq:60.01Hz UTHDi:0.00% ITHDi:0.00% KDisp:0 Lamp Flux:5395.47x1 lm		
NAME: ASD-LSF8-4A40WH-QB	TYPE:	WEIGHT:
SPEC.: 40W-5000K	DIM.:	SERIAL No.:
MFR.: ASD Lighting Corp.	SUR.: 1.2*0.09m	Shielding Angle:

DATA OF LAMP		PHOTOMETRIC DATA			
MODEL	ASD-LSF8-4A40WH-QB	Imax (cd/klm)	286.4	S/MH (C0/180)	1.29
NOMINAL POWER (W)	40	LOR (%)	100.0	S/MH (C90/270)	1.19
RATED VOLTAGE (V)	120	TOTAL FLUX (lm/klm)	1000.0	η UP, DN (C0-180)	4.6, 46.1
NOMINAL FLUX (lm)	5395.47	CIE CLASS	DIRECT	η UP, DN (C180-360)	4.7, 44.7
LAMPS INSIDE	1	η up (%)	9.2	CIBSE SHR NOM	1.25
TEST VOLTAGE (V)	120	η down (%)	90.8	CIBSE SHR MAX	1.35



C Range: 0 - 360DEG
 C Interval: 45.0DEG
 Test Speed: HIGH
 Temperature: 25.3°C
 Operators: lianghaizhu-2
 Test Date: 2024-11-15

γ Range: 0 - 180DEG
 γ Interval: 1.0DEG
 Test System: EVERFINE GO-2000A_V1 SYSTEM V2.00.488
 Humidity: 65.0%
 Test Distance: 9.770m [K=1.0000]
 Remarks:

ZONAL FLUX DIAGRAM

ZONAL FLUX DIAGRAM:

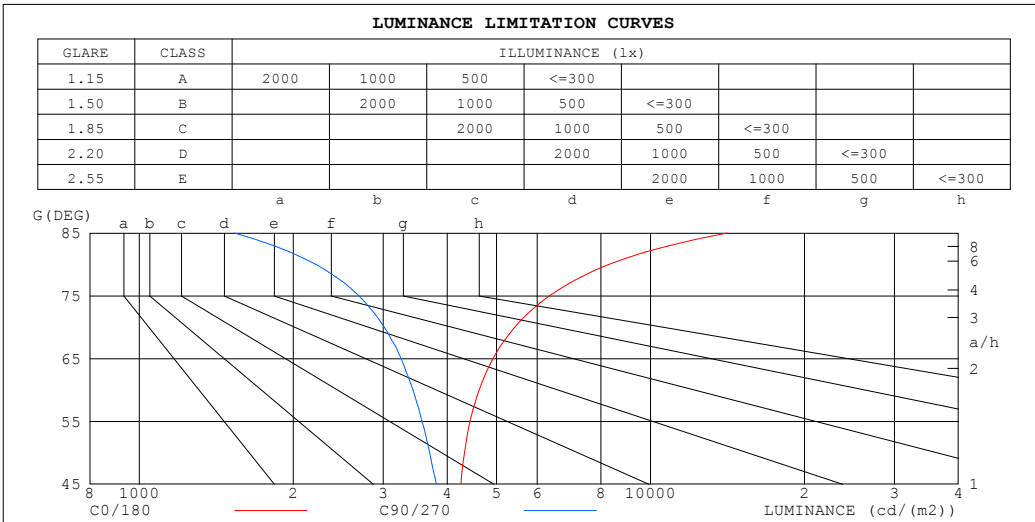
γ	C0	C45	C90	C135	C180	C225	C270	C315	γ	Φ zone	Φ total	%lum,lamp
10	281.5	282.4	282.0	282.3	282.2	278.7	277.5	279.6	0- 10	27.06	27.06	2.71,2.71
20	268.0	267.9	265.5	268.1	269.4	261.3	257.5	262.3	10- 20	77.35	104.4	10.4,10.4
30	246.7	244.2	238.1	244.0	248.9	235.4	228.0	236.7	20- 30	116.9	221.3	22.1,22.1
40	219.5	212.9	202.5	213.0	222.4	203.0	191.4	204.6	30- 40	140.9	362.2	36.2,36.2
50	188.6	177.0	161.1	177.0	192.2	167.1	150.4	168.7	40- 50	147.5	509.7	51,51
60	156.9	139.6	116.3	140.0	160.8	130.9	106.9	132.5	50- 60	137.9	647.6	64.8,64.8
70	125.9	104.0	69.85	104.7	130.0	97.07	62.77	98.65	60- 70	116.0	763.6	76.4,76.4
80	97.64	72.72	26.08	74.18	101.6	68.74	21.85	69.82	70- 80	87.03	850.6	85.1,85.1
90	64.33	42.14	0.8270	43.89	67.45	40.22	0.7887	39.68	80- 90	56.91	907.5	90.8,90.8
100	45.65	23.60	1.021	27.44	48.42	24.81	1.229	24.24	90-100	33.33	940.9	94.1,94.1
110	31.44	15.22	1.476	16.71	33.94	15.48	1.669	14.91	100-110	20.53	961.4	96.1,96.1
120	21.03	11.37	1.979	13.03	23.38	12.44	2.082	10.50	110-120	14.05	975.4	97.5,97.5
130	15.34	7.914	2.544	9.900	17.57	9.774	2.607	7.344	120-130	9.432	984.9	98.5,98.5
140	10.75	6.224	3.050	8.387	12.50	8.455	3.090	6.046	130-140	6.312	991.2	99.1,99.1
150	7.964	5.207	3.551	7.174	8.705	7.265	3.640	5.112	140-150	4.221	995.4	99.5,99.5
160	6.283	4.630	4.173	6.402	7.017	6.144	4.208	4.659	150-160	2.648	998.1	99.8,99.8
170	5.051	4.433	4.654	5.484	5.908	5.444	4.670	4.487	160-170	1.483	999.5	100,100
180	4.434	4.811	4.933	4.994	4.440	4.825	4.938	4.988	170-180	0.4604	1000	100,100
DEG	LUMINOUS INTENSITY:cd/klm									UNIT:lm/klm		

C Range: 0 - 360DEG
 C Interval: 45.0DEG
 Test Speed: HIGH
 Temperature:25.3°C
 Operators:lianghaizhu-2
 Test Date:2024-11-15

γ Range: 0 - 180DEG
 γ Interval: 1.0DEG
 Test System:EVERFINE GO-2000A_V1 SYSTEM V2.00.488
 Humidity:65.0%
 Test Distance:9.770m [K=1.0000]
 Remarks:

LUMINANCE LIMITATION CURVES

Test:U:119.94V I:0.3155A P:37.705W PF:0.9963 Freq:60.01Hz UTHDi:0.00% ITHDi:0.00% KDisp:0 Lamp Flux:5395.47x1 lm		
NAME: ASD-LSF8-4A40WH-QB	TYPE:	WEIGHT:
SPEC.: 40W-5000K	DIM.:	SERIAL No.:
MFR.: ASD Lighting Corp.	SUR.: 1.2*0.09m	Shielding Angle:



LUMINANCE cd/(m2)		
G (DEG)	C0/180	C90/270
85	14114	1534
80	8284	2215
75	6340	2686
70	5422	3012
65	4917	3251
60	4623	3432
55	4435	3572
50	4324	3696
45	4255	3808

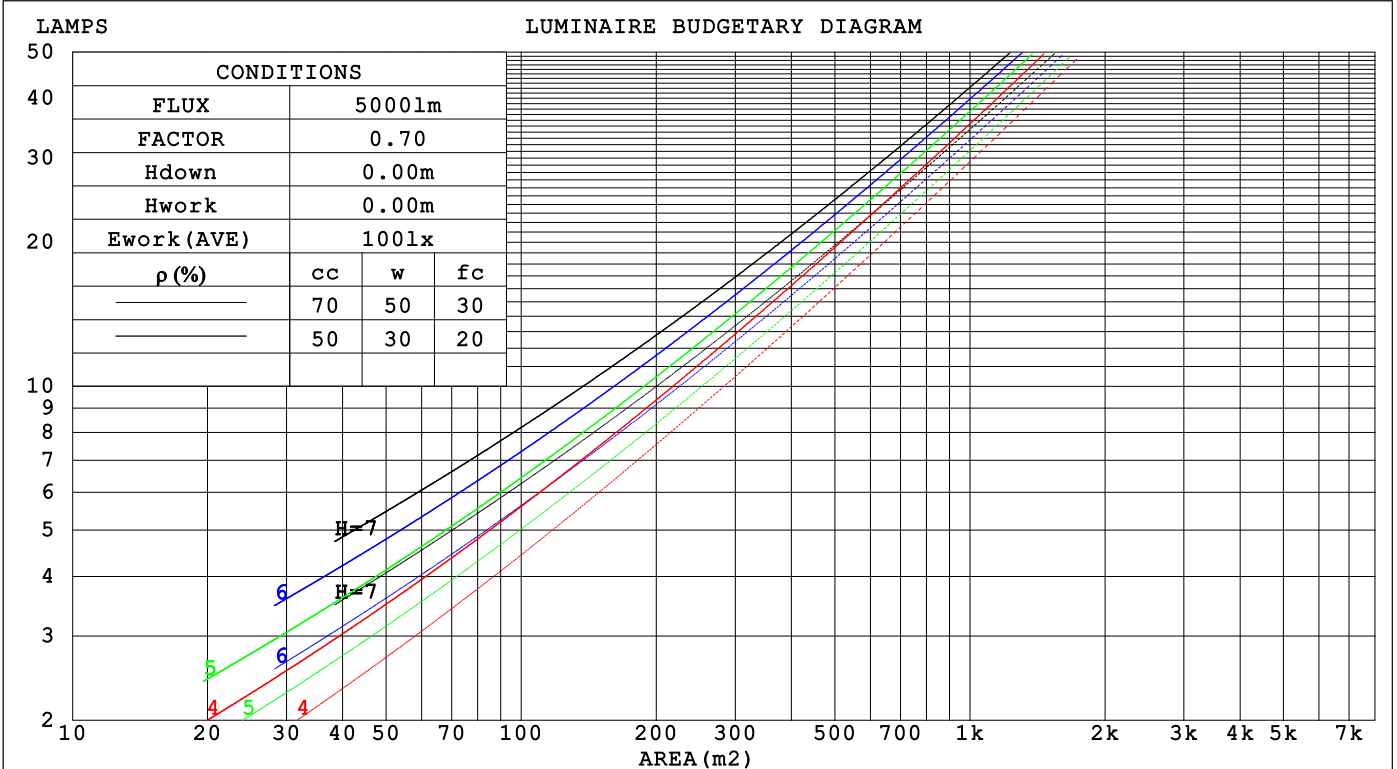
C Range: 0 - 360DEG
 C Interval: 45.0DEG
 Test Speed: HIGH
 Temperature: 25.3°C
 Operators: lianghaizhu-2
 Test Date: 2024-11-15

γ Range: 0 - 180DEG
 γ Interval: 1.0DEG
 Test System: EVERFINE GO-2000A_V1 SYSTEM V2.00.488
 Humidity: 65.0%
 Test Distance: 9.770m [K=1.0000]
 Remarks:

CU AND LUMINAIRE BUDGETARY ESTIMATE DIAGRAM

Test:U:119.94V I:0.3155A P:37.705W PF:0.9963 Freq:60.01Hz		
UTHDi:0.00% ITHDi:0.00% KDisp:0 Lamp Flux:5395.47x1 lm		
NAME: ASD-LSF8-4A40WH-QB	TYPE:	WEIGHT:
SPEC.: 40W-5000K	DIM.:	SERIAL No.:
MFR.: ASD Lighting Corp.	SUR.: 1.2*0.09m	Shielding Angle:

ρ_{cc}	80%			70%			50%			30%			10%			0
ρ_w	50%	30%	10%	50%	30%	10%	50%	30%	10%	50%	30%	10%	50%	30%	10%	0
ρ_{fc}	20%			20%			20%			20%			20%			0
RCR	RCR:Room Cavity Ratio						Coefficients of Utilization(CU)									
0.0	1.17	1.17	1.17	1.13	1.13	1.13	1.06	1.06	1.06	.99	.99	.99	.94	.94	.94	.91
1.0	.99	.94	.90	.96	.91	.87	.90	.86	.83	.84	.81	.79	.79	.77	.75	.72
2.0	.85	.78	.72	.83	.76	.70	.78	.72	.67	.73	.68	.64	.68	.65	.61	.58
3.0	.75	.66	.59	.72	.64	.58	.68	.61	.55	.64	.58	.53	.60	.55	.51	.49
4.0	.66	.57	.49	.64	.55	.49	.60	.53	.47	.57	.50	.45	.53	.48	.44	.41
5.0	.59	.49	.42	.57	.48	.42	.54	.46	.40	.51	.44	.39	.48	.42	.38	.35
6.0	.53	.43	.37	.51	.43	.36	.48	.41	.35	.46	.39	.34	.43	.38	.33	.31
7.0	.48	.39	.32	.46	.38	.32	.44	.36	.31	.42	.35	.30	.40	.34	.29	.27
8.0	.43	.35	.29	.42	.34	.28	.40	.33	.28	.38	.32	.27	.36	.31	.26	.24
9.0	.40	.31	.26	.39	.31	.25	.37	.30	.25	.35	.29	.24	.34	.28	.24	.22
10.0	.37	.29	.23	.36	.28	.23	.34	.27	.23	.33	.26	.22	.31	.26	.21	.20



C Range: 0 - 360DEG
 C Interval: 45.0DEG
 Test Speed: HIGH
 Temperature:25.3°C
 Operators:lianghaizhu-2
 Test Date:2024-11-15

γ Range: 0 - 180DEG
 γ Interval: 1.0DEG
 Test System:EVERFINE GO-2000A_V1 SYSTEM V2.00.488
 Humidity:65.0%
 Test Distance:9.770m [K=1.0000]
 Remarks:

WEC AND CCEC

Test:U:119.94V I:0.3155A P:37.705W PF:0.9963 Freq:60.01Hz		
UTHDi:0.00% ITHDi:0.00% KDisp:0 Lamp Flux:5395.47x1 lm		
NAME: ASD-LSF8-4A40WH-QB	TYPE:	WEIGHT:
SPEC.: 40W-5000K	DIM.:	SERIAL No.:
MFR.: ASD Lighting Corp.	SUR.: 1.2*0.09m	Shielding Angle:

ρ_{CC}	80%			70%			50%			30%			10%			0
ρ_w	50%	30%	10%	50%	30%	10%	50%	30%	10%	50%	30%	10%	50%	30%	10%	0
ρ_{fc}	20%			20%			20%			20%			20%			0
RCR	RCR:Room Cavity Ratio						Wall Exitance Coefficients(WEC)									
0.0																
1.0	.359	.204	.065	.349	.199	.063	.330	.190	.061	.313	.181	.058	.297	.172	.056	
2.0	.318	.175	.054	.310	.171	.053	.293	.163	.051	.277	.156	.049	.263	.149	.047	
3.0	.287	.153	.046	.279	.149	.045	.263	.143	.043	.250	.137	.042	.237	.131	.041	
4.0	.260	.135	.040	.253	.132	.039	.239	.127	.038	.227	.122	.037	.215	.117	.036	
5.0	.238	.121	.035	.231	.119	.035	.219	.114	.034	.208	.110	.033	.197	.105	.032	
6.0	.219	.110	.031	.213	.108	.031	.202	.103	.030	.192	.100	.029	.182	.096	.028	
7.0	.202	.100	.028	.197	.098	.028	.187	.095	.027	.178	.091	.027	.169	.088	.026	
8.0	.188	.092	.026	.183	.090	.026	.174	.087	.025	.166	.084	.024	.158	.081	.024	
9.0	.176	.085	.024	.171	.084	.023	.163	.081	.023	.155	.078	.022	.148	.075	.022	
10.0	.165	.079	.022	.161	.078	.022	.153	.075	.021	.146	.072	.021	.139	.070	.020	

ρ_{CC}	80%			70%			50%			30%			10%			0
ρ_w	50%	30%	10%	50%	30%	10%	50%	30%	10%	50%	30%	10%	50%	30%	10%	0
ρ_{fc}	20%			20%			20%			20%			20%			0
RCR	RCR:Room Cavity Ratio						Ceiling Cavity Exitance Coefficients(CCEC)									
0.0	.261	.261	.261	.223	.223	.223	.152	.152	.152	.087	.087	.087	.028	.028	.028	
1.0	.255	.227	.201	.218	.195	.173	.149	.134	.120	.086	.077	.070	.027	.025	.023	
2.0	.247	.203	.166	.212	.175	.144	.145	.121	.100	.084	.070	.059	.027	.023	.019	
3.0	.240	.186	.144	.205	.161	.125	.141	.112	.087	.081	.065	.052	.026	.021	.017	
4.0	.232	.173	.129	.199	.150	.112	.137	.104	.079	.079	.061	.047	.025	.020	.015	
5.0	.224	.163	.119	.192	.141	.103	.133	.099	.073	.077	.058	.043	.025	.019	.014	
6.0	.217	.155	.111	.186	.134	.097	.128	.094	.068	.075	.055	.041	.024	.018	.013	
7.0	.210	.148	.106	.180	.129	.092	.125	.090	.065	.072	.053	.039	.023	.017	.013	
8.0	.203	.143	.101	.175	.124	.088	.121	.087	.063	.070	.051	.037	.023	.017	.012	
9.0	.197	.138	.098	.170	.120	.086	.117	.084	.061	.068	.050	.036	.022	.016	.012	
10.0	.191	.134	.096	.165	.116	.083	.114	.082	.059	.067	.048	.035	.022	.016	.012	

C Range: 0 - 360DEG
 C Interval: 45.0DEG
 Test Speed: HIGH
 Temperature:25.3°C
 Operators:lianghaizhu-2
 Test Date:2024-11-15

γ Range: 0 - 180DEG
 γ Interval: 1.0DEG
 Test System:EVERFINE GO-2000A_V1 SYSTEM V2.00.488
 Humidity:65.0%
 Test Distance:9.770m [K=1.0000]
 Remarks:

UGR(Unified Glare Rating) Table

Test:U:119.94V I:0.3155A P:37.705W PF:0.9963 Freq:60.01Hz UTHDi:0.00% ITHDi:0.00% KDisp:0 Lamp Flux:5395.47x1 lm										
NAME: ASD-LSP8-4A40WH-QB					TYPE:			WEIGHT:		
SPEC.: 40W-5000K					DIM.:			SERIAL No.:		
MFR.: ASD Lighting Corp.					SUR.: 1.2*0.09m			Shielding Angle:		
ceiling/cavity	0.7	0.7	0.5	0.5	0.3	0.7	0.7	0.5	0.5	0.3
walls	0.5	0.3	0.5	0.3	0.3	0.5	0.3	0.5	0.3	0.3
working plane	0.2	0.2	0.2	0.2	0.2	0.2	0.2	0.2	0.2	0.2
Room dimensions	Viewed crosswise					Viewed endwise				
x = 2H y = 2H	16.0	17.4	16.4	17.8	18.2	15.0	16.5	15.4	16.8	17.2
3H	18.2	19.6	18.7	20.0	20.4	16.5	17.8	16.9	18.2	18.6
4H	19.5	20.8	19.9	21.2	21.6	17.1	18.3	17.5	18.7	19.2
6H	20.8	22.0	21.3	22.5	22.9	17.4	18.6	17.9	19.1	19.6
8H	21.6	22.7	22.1	23.2	23.7	17.5	18.7	18.0	19.2	19.6
12H	22.4	23.6	22.9	24.0	24.5	17.6	18.7	18.1	19.2	19.7
4H 2H	16.6	17.9	17.0	18.3	18.7	15.8	17.1	16.3	17.5	18.0
3H	19.1	20.2	19.5	20.6	21.1	17.6	18.7	18.1	19.2	19.7
4H	20.4	21.5	21.0	22.0	22.5	18.4	19.4	18.9	19.9	20.4
6H	22.0	22.9	22.5	23.4	24.0	18.9	19.9	19.5	20.4	20.9
8H	22.9	23.7	23.4	24.2	24.8	19.1	20.0	19.7	20.5	21.1
12H	23.9	24.6	24.4	25.2	25.8	19.2	20.0	19.8	20.6	21.2
8H 4H	20.8	21.7	21.3	22.2	22.8	19.1	19.9	19.6	20.4	21.0
6H	22.6	23.3	23.2	23.9	24.5	20.0	20.7	20.5	21.3	21.9
8H	23.7	24.3	24.3	24.9	25.5	20.3	21.0	20.9	21.6	22.2
12H	24.9	25.4	25.5	26.1	26.7	20.6	21.2	21.2	21.8	22.5
12H 4H	20.8	21.6	21.4	22.2	22.8	19.2	20.0	19.8	20.6	21.2
6H	22.7	23.4	23.3	23.9	24.6	20.3	21.0	20.9	21.6	22.2
8H	23.9	24.4	24.5	25.0	25.7	20.9	21.4	21.5	22.0	22.7
Variations with the observer position at spacings(CIE Pub.117):										
S = 1.0H	+ 0.1 / - 0.1					+ 0.1 / - 0.2				
1.5H	+ 0.2 / - 0.2					+ 0.2 / - 0.3				
2.0H	+ 0.2 / - 0.3					+ 0.2 / - 0.4				

CIE Pub.117, 5395 lm Total Lamp Luminous Flux Correct (8log(F/F0) = 5.9)
 Area: 0.366 m2

C Range: 0 - 360DEG	γ Range: 0 - 180DEG
C Interval: 45.0DEG	γ Interval: 1.0DEG
Test Speed: HIGH	Test System:EVERFINE GO-2000A_V1 SYSTEM V2.00.488
Temperature:25.3°C	Humidity:65.0%
Operators:lianghaizhu-2	Test Distance:9.770m [K=1.0000]
Test Date:2024-11-15	Remarks:

UTILIZATION FACTORS TABLE

Test:U:119.94V I:0.3155A P:37.705W PF:0.9963 Freq:60.01Hz UTHDi:0.00% ITHDi:0.00% KDisp:0 Lamp Flux:5395.47x1 lm		
NAME: ASD-LSF8-4A40WH-QB	TYPE:	WEIGHT:
SPEC.: 40W-5000K	DIM.:	SERIAL No.:
MFR.: ASD Lighting Corp.	SUR.: 1.2*0.09m	Shielding Angle:

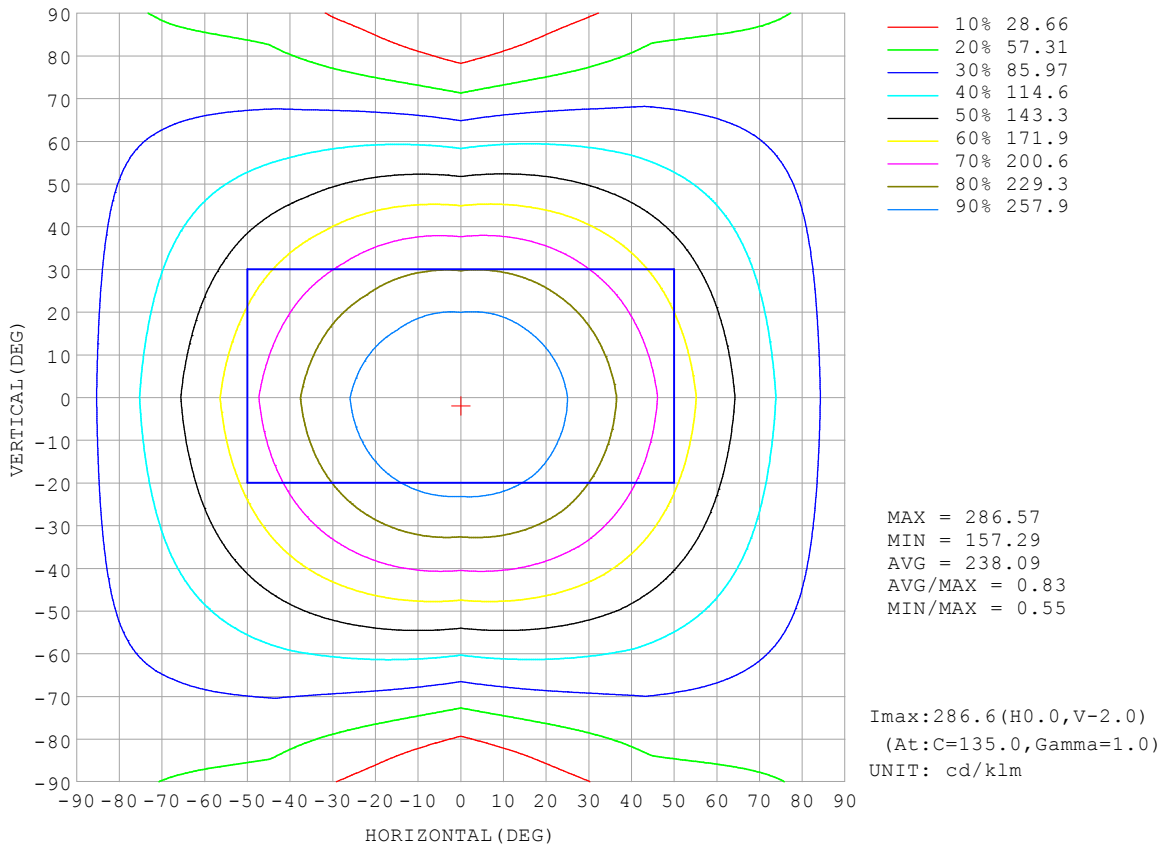
REFLECTANCE										
Ceiling	0.8	0.8	0.8	0.7	0.7	0.7	0.5	0.5	0.5	0
Walls	0.7	0.5	0.3	0.7	0.5	0.3	0.7	0.5	0.3	0
Working plane	0.2	0.2	0.2	0.2	0.2	0.2	0.2	0.2	0.2	0
ROOM INDEX	UTILIZATION FACTORS (PERCENT) $k(RI) \times RCR = 5$									
k = 0.60	52	40	33	52	40	33	50	39	33	26
0.80	62	50	42	61	49	42	58	48	41	33
1.00	70	58	50	68	57	49	65	58	49	41
1.25	77	65	57	75	64	56	71	62	55	47
1.50	82	71	63	80	69	62	76	67	60	51
2.00	89	79	71	86	77	70	82	74	68	58
2.50	93	84	77	90	82	75	85	78	73	62
3.00	97	88	82	94	86	80	88	82	77	66
4.00	101	94	88	98	91	86	92	87	82	71
5.00	104	98	92	100	95	90	94	90	86	74
ROOM INDEX	UF(total)									Direct
According to DIN EN 13032-2 2004			Suspended				SHRNOM = 1.25			

C Range: 0 - 360DEG
 C Interval: 45.0DEG
 Test Speed: HIGH
 Temperature:25.3°C
 Operators:lianghaizhu-2
 Test Date:2024-11-15

γ Range: 0 - 180DEG
 γ Interval: 1.0DEG
 Test System:EVERFINE GO-2000A_V1 SYSTEM V2.00.488
 Humidity:65.0%
 Test Distance:9.770m [K=1.0000]
 Remarks:

ISOCANDELA DIAGRAM

Test:U:119.94V I:0.3155A P:37.705W PF:0.9963 Freq:60.01Hz UTHDi:0.00% ITHDi:0.00% KDisp:0 Lamp Flux:5395.47x1 lm		
NAME: ASD-LSF8-4A40WH-QB	TYPE:	WEIGHT:
SPEC.: 40W-5000K	DIM.:	SERIAL No.:
MFR.: ASD Lighting Corp.	SUR.: 1.2*0.09m	Shielding Angle:

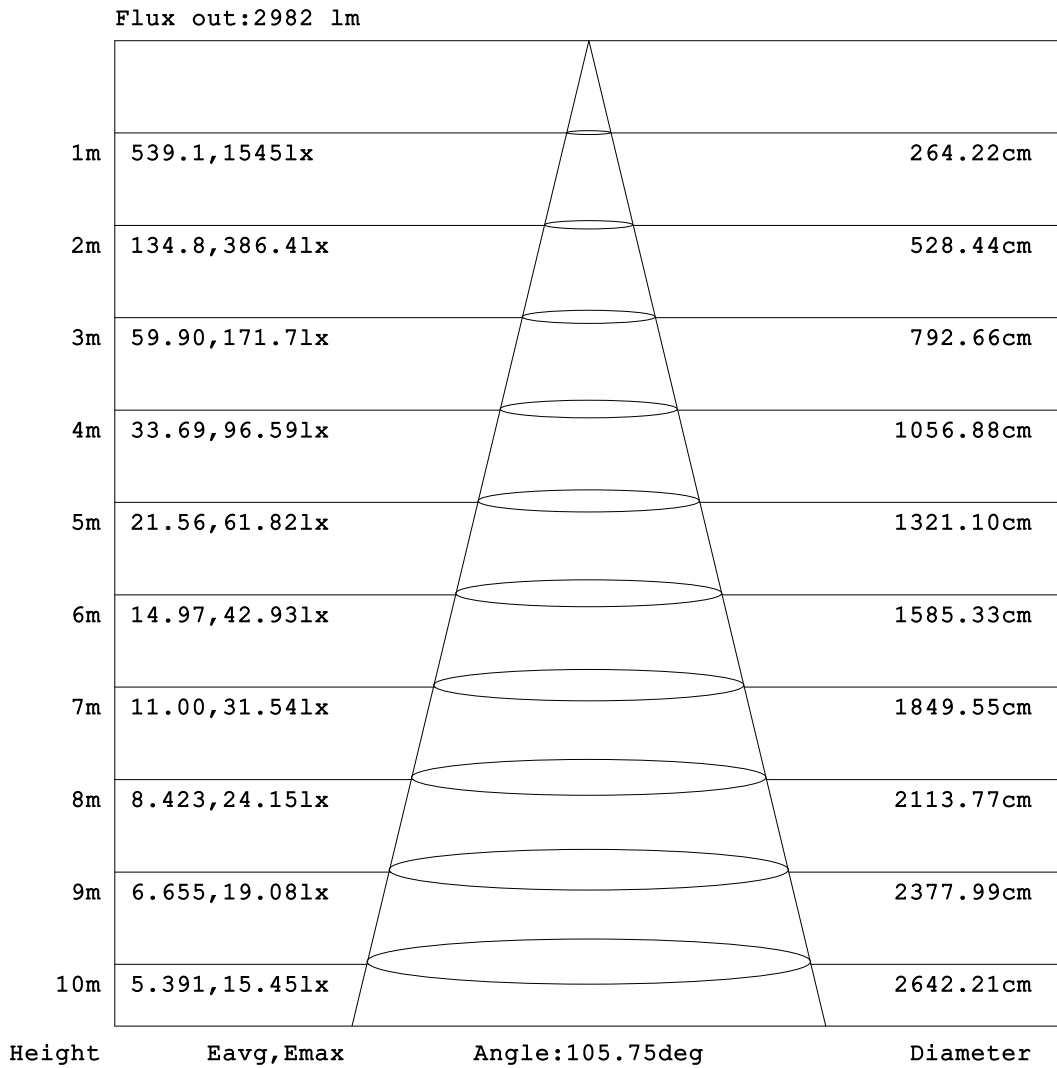


C Range: 0 - 360DEG
 C Interval: 45.0DEG
 Test Speed: HIGH
 Temperature:25.3°C
 Operators:lianghaizhu-2
 Test Date:2024-11-15

γ Range: 0 - 180DEG
 γ Interval: 1.0DEG
 Test System:EVERFINE GO-2000A_V1 SYSTEM V2.00.488
 Humidity:65.0%
 Test Distance:9.770m [K=1.0000]
 Remarks:

AAI Figure

Test:U:119.94V I:0.3155A P:37.705W PF:0.9963 Freq:60.01Hz UTHDi:0.00% ITHDi:0.00% KDisp:0 Lamp Flux:5395.47x1 lm		
NAME: ASD-LSF8-4A40WH-QB	TYPE:	WEIGHT:
SPEC.: 40W-5000K	DIM.:	SERIAL No.:
MFR.: ASD Lighting Corp.	SUR.: 1.2*0.09m	Shielding Angle:



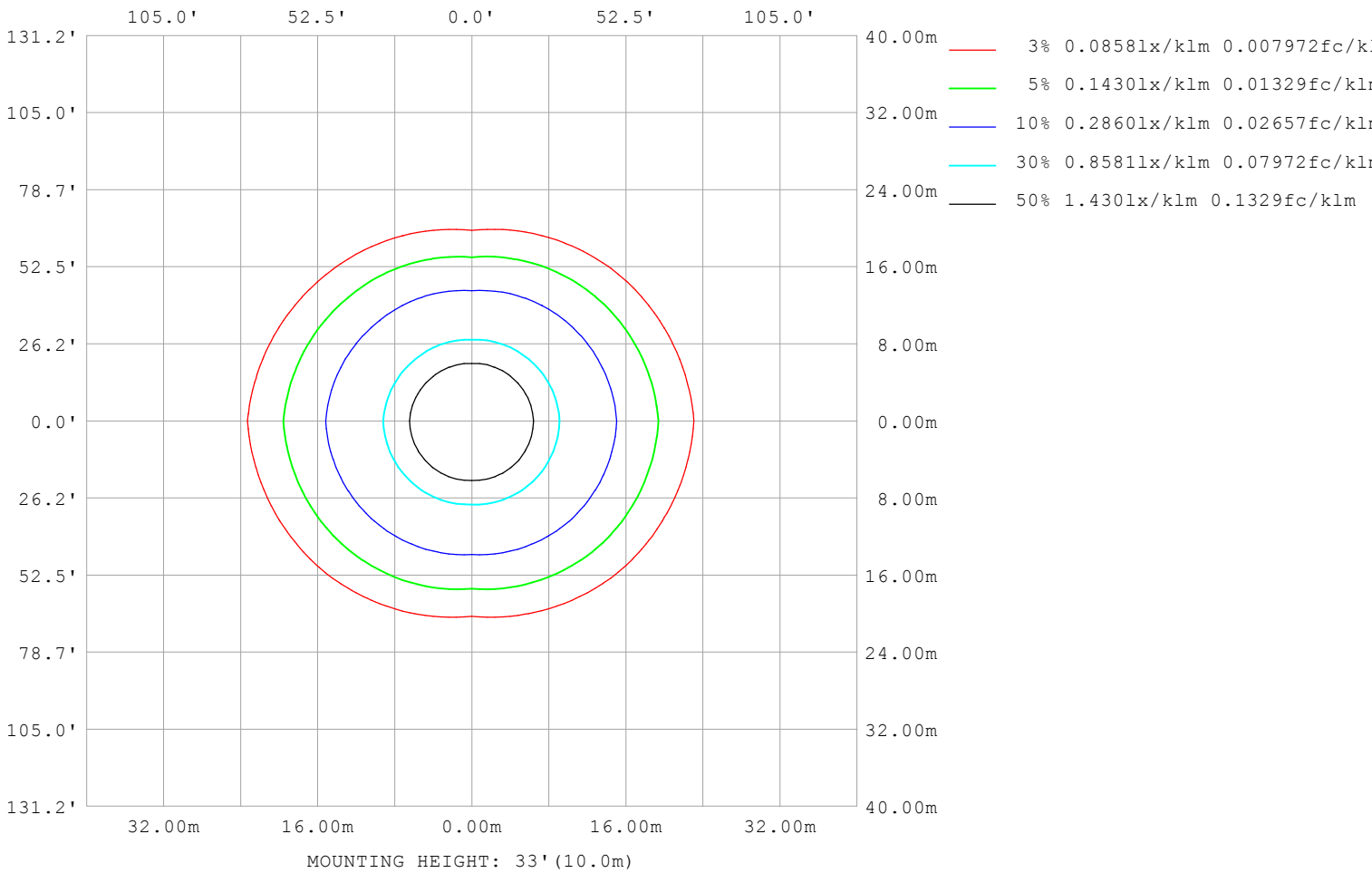
Note: The Curves indicate the illuminated area and the average illumination when the luminaire is at different distance.

C Range: 0 - 360DEG
 C Interval: 45.0DEG
 Test Speed: HIGH
 Temperature: 25.3°C
 Operators: lianghaizhu-2
 Test Date: 2024-11-15

γ Range: 0 - 180DEG
 γ Interval: 1.0DEG
 Test System: EVERFINE GO-2000A_V1 SYSTEM V2.00.488
 Humidity: 65.0%
 Test Distance: 9.770m [K=1.0000]
 Remarks:

ISOLUX DIAGRAM

Test:U:119.94V I:0.3155A P:37.705W PF:0.9963 Freq:60.01Hz UTHDi:0.00% ITHDi:0.00% KDisp:0 Lamp Flux:5395.47x1 lm		
NAME: ASD-LSF8-4A40WH-QB	TYPE:	WEIGHT:
SPEC.: 40W-5000K	DIM.:	SERIAL No.:
MFR.: ASD Lighting Corp.	SUR.: 1.2*0.09m	Shielding Angle:



C Range: 0 - 360DEG
 C Interval: 45.0DEG
 Test Speed: HIGH
 Temperature:25.3°C
 Operators:lianghaizhu-2
 Test Date:2024-11-15

γ Range: 0 - 180DEG
 γ Interval: 1.0DEG
 Test System:EVERFINE GO-2000A_V1 SYSTEM V2.00.488
 Humidity:65.0%
 Test Distance:9.770m [K=1.0000]
 Remarks:

LED Avg.L Report

Test:U:119.94V I:0.3155A P:37.705W PF:0.9963 Freq:60.01Hz UTHDi:0.00% ITHDi:0.00% KDisp:0 Lamp Flux:5395.47x1 lm		
NAME: ASD-LSF8-4A40WH-QB	TYPE:	WEIGHT:
SPEC.: 40W-5000K	DIM.:	SERIAL No.:
MFR.: ASD Lighting Corp.	SUR.: 1.2*0.09m	Shielding Angle:

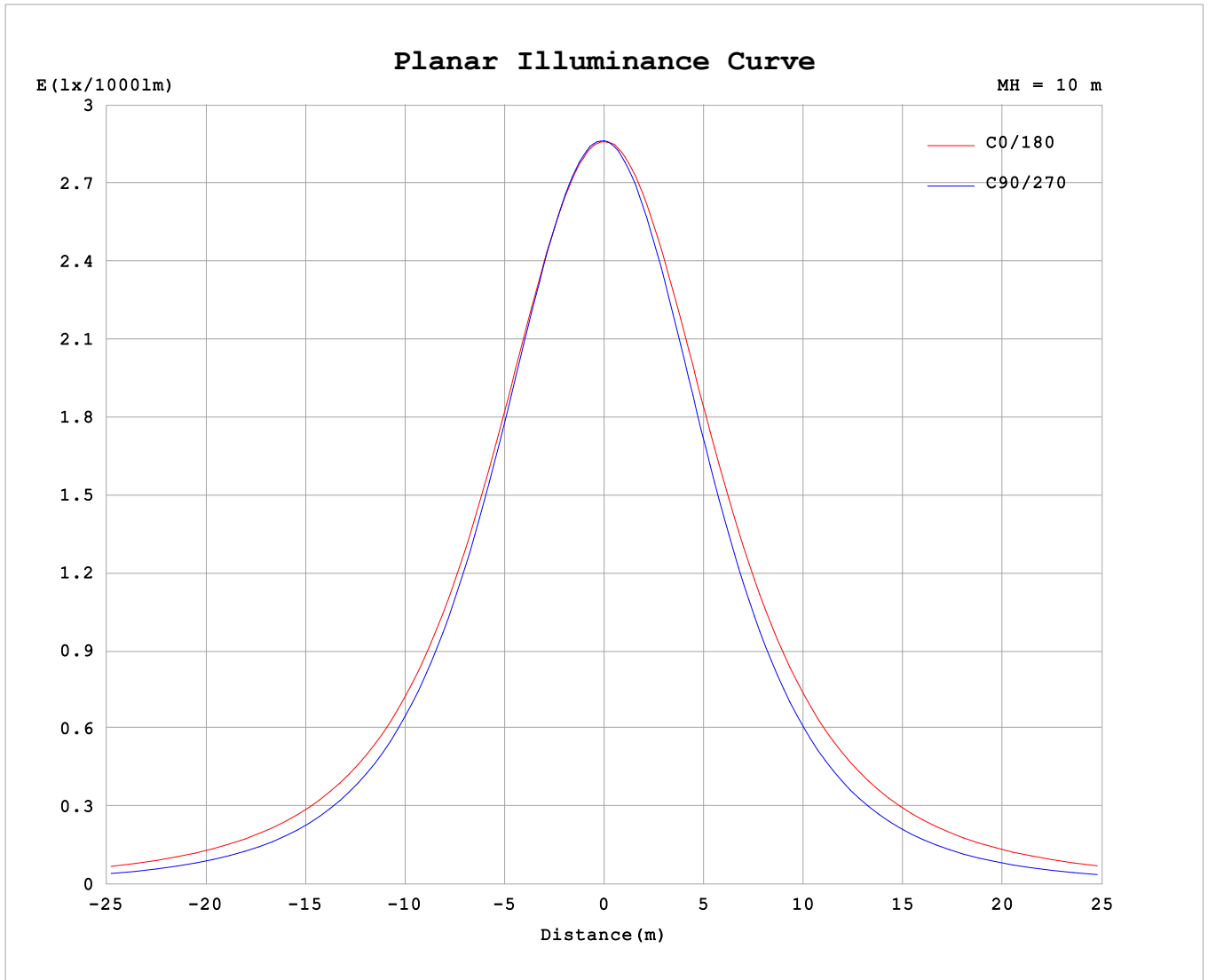
AvgL	cd/m2
L_0~180 (65) av	4993
L_0~180 (75) av	6459
L_0~180 (85) av	14437
L_90~270 (65) av	3103
L_90~270 (75) av	2519
L_90~270 (85) av	1334
L_45 (65) av	4113
L_45 (75) av	4873
L_45 (85) av	9898

Standard: GB/T 29293-2012

C Range: 0 - 360DEG
 C Interval: 45.0DEG
 Test Speed: HIGH
 Temperature:25.3°C
 Operators:lianghaizhu-2
 Test Date:2024-11-15

γ Range: 0 - 180DEG
 γ Interval: 1.0DEG
 Test System:EVERFINE GO-2000A_V1 SYSTEM V2.00.488
 Humidity:65.0%
 Test Distance:9.770m [K=1.0000]
 Remarks:

Planar Illuminance Curve



C Range: 0 - 360DEG
 C Interval: 45.0DEG
 Test Speed: HIGH
 Temperature: 25.3°C
 Operators: lianghaizhu-2
 Test Date: 2024-11-15

γ Range: 0 - 180DEG
 γ Interval: 1.0DEG
 Test System: EVERFINE GO-2000A_V1 SYSTEM V2.00.488
 Humidity: 65.0%
 Test Distance: 9.770m [K=1.0000]
 Remarks:

LUMINOUS DISTRIBUTION INTENSITY DATA

Test:U:119.94V I:0.3155A P:37.705W PF:0.9963 Freq:60.01Hz UTHDi:0.00% ITHDi:0.00% KDisp:0 Lamp Flux:5395.47x1 lm		
NAME: ASD-LSF8-4A40WH-QB	TYPE:	WEIGHT:
SPEC.: 40W-5000K	DIM.:	SERIAL No.:
MFR.: ASD Lighting Corp.	SUR.: 1.2*0.09m	Shielding Angle:

Table--1

UNIT: cd/klm

C (DEG) \ γ (DEG)	0	45	90	135	180	225	270	315										
0	286	286	286	286	286	286	286	286										
5	285	285	286	286	285	284	283	284										
10	281	282	282	282	282	279	278	280										
15	276	277	275	276	277	272	269	272										
20	268	268	265	268	269	261	257	262										
25	258	257	253	257	260	250	244	251										
30	247	244	238	244	249	235	228	237										
35	234	229	221	229	236	220	210	221										
40	220	213	202	213	222	203	191	205										
45	204	195	183	195	208	185	171	187										
50	189	177	161	177	192	167	150	169										
55	173	158	139	158	176	149	129	150										
60	157	140	116	140	161	131	107	132										
65	141	121	93.1	122	145	113	84.8	115										
70	126	104	69.8	105	130	97.1	62.8	98.7										
75	111	87.7	47.1	88.8	115	82.2	41.3	83.6										
80	97.6	72.7	26.1	74.2	102	68.7	21.9	69.8										
85	83.5	59.2	9.07	60.9	87.2	56.6	6.71	57.4										
90	64.3	42.1	0.83	43.9	67.4	40.2	0.79	39.7										
95	54.1	32.9	0.79	34.4	57.0	31.6	0.98	31.9										
100	45.7	23.6	1.02	27.4	48.4	24.8	1.23	24.2										
105	38.1	16.8	1.24	18.2	40.8	16.2	1.45	16.1										
110	31.4	15.2	1.48	16.7	33.9	15.5	1.67	14.9										
115	25.8	13.1	1.72	14.6	28.2	13.9	1.87	13.1										
120	21.0	11.4	1.98	13.0	23.4	12.4	2.08	10.5										
125	17.9	9.48	2.26	11.2	20.2	10.9	2.34	9.53										
130	15.3	7.91	2.54	9.90	17.6	9.77	2.61	7.34										
135	12.7	6.91	2.80	9.02	14.7	9.01	2.86	6.64										
140	10.7	6.22	3.05	8.39	12.5	8.46	3.09	6.05										
145	9.14	5.67	3.27	7.88	10.8	7.97	3.33	5.55										
150	7.96	5.21	3.55	7.17	8.70	7.27	3.64	5.11										
155	6.94	4.82	3.86	6.83	7.51	6.91	3.94	4.75										
160	6.28	4.63	4.17	6.40	7.02	6.14	4.21	4.66										
165	5.74	4.53	4.44	5.69	6.52	5.66	4.46	4.57										
170	5.05	4.43	4.65	5.48	5.91	5.44	4.67	4.49										
175	4.16	4.39	4.82	4.85	4.90	4.72	4.84	4.42										
180	4.43	4.81	4.93	4.99	4.44	4.82	4.94	4.99										

C Range: 0 - 360DEG
 C Interval: 45.0DEG
 Test Speed: HIGH
 Temperature:25.3°C
 Operators:lianghaizhu-2
 Test Date:2024-11-15

γ Range: 0 - 180DEG
 γ Interval: 1.0DEG
 Test System:EVERFINE GO-2000A_V1 SYSTEM V2.00.488
 Humidity:65.0%
 Test Distance:9.770m [K=1.0000]
 Remarks: