



LED EDGE-LIT TRANSPARENT EXIT SIGN RED

EXL series

► **DESIGN** - LED EDGE-LIT TRANSPARENT EXIT SIGN RED features a modern, low-profile design with a brushed aluminum housing and a high-grade transparent acrylic panel. The construction is flame-retardant and corrosion-resistant. Red "EXIT" letters are prominently displayed and clearly visible from up to 100 feet away.

► **INSTALLATION** - This exit sign with emergency lights offers three mounting options: ceiling mount, wall mount and side-wall mount, with mounting hardware and a canopy included. Test buttons and indicator LEDs are also included to verify functionality during setup and maintenance.

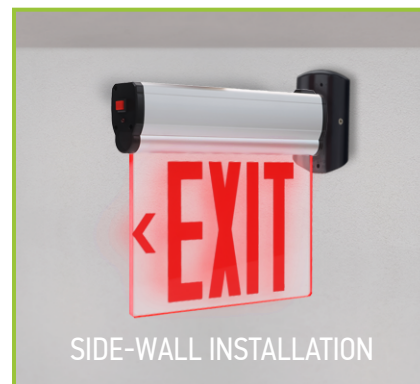
► **CAPABILITIES** - The exit sign is equipped with a rechargeable 4.8V Ni-MH back-up battery, offering at least 90 minutes of emergency lighting during power outages. For a 120V connection, connect the black wire (hot) to the white wire (neutral), for a 277V connection, connect the red wire (hot) to the white wire (neutral). Model meets UL 924 safety standards.

► **APPLICATION** - The construction is designed for indoor damp locations. This sign is an ideal for both commercial and residential environments, including hospitals, schools, hotels, offices, shopping malls, churches, apartments, and warehouses. Its professional appearance and high visibility make it suitable for hallways, stairways, exits, and other critical safety zones.

► **ADVANTAGES** - With a lifespan of 50,000 hours, these fixtures are made to last decades under normal operation! ASD provides a 5-year limited warranty along with UL certifications to guarantee top quality products and safety!



MOUNTING OPTIONS:



PRODUCT PRESENTATION:

| Model | Letters finish | Power of product | Battery information | Voltage | Finish | Dimensions | Certification |
|-----------|----------------|------------------|---------------------|----------|--------|----------------------------|---------------|
| ASD-EXT-R | Red | 3 W | 4.8V 600mAh Ni-MH | 120/277V | Clear | 12-5/16" x 9-7/8" x 1-7/8" | UL(E495654) |

TECHNICAL PARAMETERS:

| Model | Work environment | Operating temperature | Power factor | Housing |
|-----------|------------------|----------------------------|--------------|----------|
| ASD-EXT-R | Damp location | 32°F to 104°F(0°C to 40°C) | >0.9 | Aluminum |

ORDERING INFORMATION

| Model | Product dimensions | Weight | Pcs. Per carton | Carton size | Carton weight | UPC | GTIN 14 |
|-----------|----------------------------|----------------|-----------------|-------------------------|---------------|-------------|----------------|
| ASD-EXT-R | 12-5/16" x 9-7/8" x 1-7/8" | 2.8 lbs(1.3kg) | 6 | 14.17" x 13.19" x 8.66" | 19.3 lbs | 81019020111 | 10810190201111 |

For most up-to-date spec sheets please refer to asd-lighting.com

ASD LIGHTING CORP

E-mail: orders@asd-lighting.com | Web site: www.asd-lighting.com





LED EDGE-LIT TRANSPARENT EXIT SIGN RED

EXL series

INSTALLATION GUIDE

IMPORTANT SAFETY INFORMATION:

Please read all the instructions below before installation!

- ▶ Make sure that the supply voltage corresponds to the rated product voltage.
- ▶ The product must be installed by a qualified electrician in accordance with the National Electrical Code and corresponding local codes.
- ▶ If the product is damaged, do not use it.

⚠ WARNING

Risk of personal injury – read and follow all warnings and installation instructions. Keep or give to the owner for future reference.

Risk of cuts: Wear gloves to prevent cuts or abrasions when removing from carton, handling, installing, and maintaining this product.

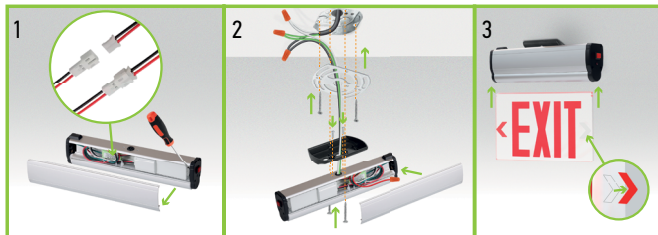
Risk of electric shock: This product must be installed in accordance with the applicable installation code by a person familiar with the construction and operation of the product and the hazards involved.

Risk of Fire: Minimum 194°F supply conductors. Consult a qualified electrician to ensure correct branch circuit conductor.

ASD® assumes no responsibility for claims arising out of improper or careless installation or handling of this product.

CEILING INSTALLATION:

1. Remove the faceplate with a flathead screwdriver, expose the compartment, and connect the backup battery lead to the PCB.
2. Secure the mounting plate to the outlet box with screws (not included). Feed supply wires through the canopy and attach it to the housing. Connect wires with wire nuts: for 120V, black to black, white to white, green to ground; for 277V, red to red, white to white, green to ground. Cap unused wires and fasten the canopy to the mounting plate.
3. Snap the faceplate back, restore power, insert the EXIT panel. Select the direction of the arrow by peeling off the arrow in the required direction. Allow 24 hours for the battery to fully charge.



BATTERY REPLACEMENT :

This fixture uses a Ni-MH Rechargeable AAA 600 mAh 4.8V battery.

To remove the battery:

1. Bend the battery catches away from the battery and remove the battery from the housing.
2. Disconnect the battery leads from the board terminal.
3. Connect the new battery to the board terminal.
4. Place the new battery in the battery location and ensure it is seated behind the battery catches.

TROUBLESHOOTING

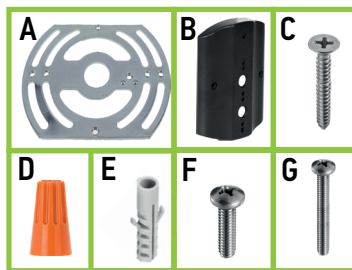
| Problem | Possible cause | Solution |
|--|-------------------------------|--|
| The LED charge indicator does not illuminate | AC power supply is off | Ensure the unit has AC power supply. Restore the power at the breaker/fuse box |
| | The unit is incorrectly wired | Ensure the unit is wired correctly. |
| | The battery isn't connected | Ensure the battery is connected. |
| The LED emergency heads do not illuminate | The battery is discharged | Verify the unit is properly wired and connected to an AC power source. Allow the unit to charge for 24 hours and then re-test. |
| | The battery isn't connected | Ensure the battery is connected. |

MAINTENANCE

NOTE: National Electric Code (NEC) and NFPA life safety code regulations require that routine tests need to be performed.

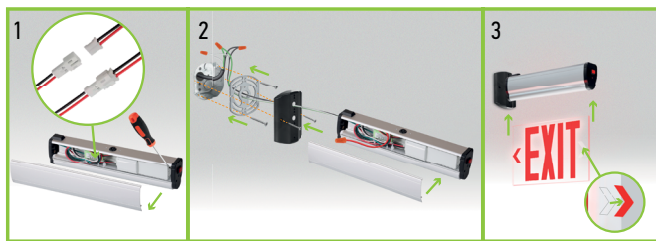
PACKAGE CONTENTS:

| Description | Quantity |
|-----------------------|----------|
| LED Emergency Lights | 1 |
| Mounting plate (A) | 1 |
| Canopy (B) | 1 |
| Self-taping screw (C) | 2 |
| Wire nut (D) | 4 |
| Anchor (E) | 2 |
| Mounting screw (F) | 2 |
| Mounting screw (G) | 2 |
| Box | 1 |



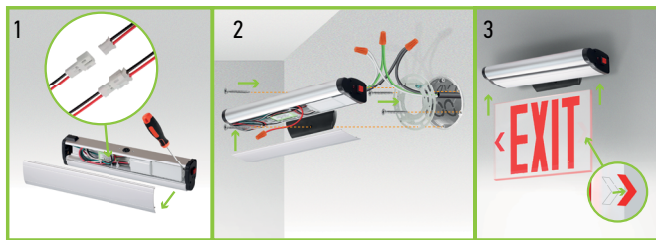
SIDE-WALL INSTALLATION:

1. Remove the faceplate with a flathead screwdriver, open the compartment, and connect the backup battery lead to the PCB.
2. Secure the mounting plate to the outlet box (screws not included). Feed supply wires through the canopy and attach it to the housing. Connect wires with wire nuts: for 120V, black to black, white to white, green to ground; for 277V, red to red, white to white, green to ground. Cap unused wires and fasten the canopy to the plate with recessed screws.
3. Snap the faceplate back, restore power, insert the EXIT panel. Select the direction of the arrow by peeling off the arrow in the required direction. Allow 24 hours for the battery to fully charge.



WALL INSTALLATION:

1. Remove the faceplate with a flathead screwdriver, expose the compartment, and connect the backup battery lead to the PCB.
2. Secure the mounting plate to the outlet box with screws (not included). Feed supply wires through the canopy and attach it to the housing. Connect wires with wire nuts: for 120V, black to black, white to white, green to ground; for 277V, red to red, white to white, green to ground. Cap unused wires and fasten the canopy to the mounting plate.
3. Snap the faceplate back, restore power, insert the EXIT panel. Select the direction of the arrow by peeling off the arrow in the required direction. Allow 24 hours for the battery to fully charge.



TESTING OPERATION:

With AC Power applied to the unit, the EXIT sign and A/C Power LED indicator should illuminate. When pushing the TEST button, the LED indicator should turn off, the EXIT sign will remain illuminated.

TESTING THE BATTERY:

Test the unit's battery once per month. Additionally, every 12 months, a full 90-minute test should be performed. While disconnected from the main power supply, the unit should illuminate for a minimum of 90 minutes on battery back-up power.



For most up-to-date spec sheets please refer to asd-lighting.com

ASD LIGHTING CORP

E-mail: orders@asd-lighting.com | Web site: www.asd-lighting.com

