



LED WAFER SQUARE

► **DESIGN** - LED WAFER SQUARE with a classic, low-profile design is an ideal solution for low ceilings. This fixture has a J-box, plug & twist connector, spring-loaded clips, and requires only 2" of ceiling space, making the installation process quick and easy. The acrylic lens with a 110° beam angle and CRI90+ grants you even light. It is designed to operate on 120V circuits, it offers smooth dimming capabilities from 10% to 100%.

► **VARIETY** - This fixture is available in square shape with sizes of 3", 4", 6", 8", and 12". Choose from White or Black finishes. Square model in 4" size is offered with both square and round bases.

► **COLOR SELECTABLE** - You can choose either a 2700K soft white, 3000K warm white, 3500K neutral white, 4000K cool white, or 5000K daylight color temperature.

► **INSTALLATION** - This fixture is IC rated so there is no can or any other housing required. It is also Wet Locations rated, making it perfect for kitchen, bathroom or any other common areas.

► **ADVANTAGES** - With a lifespan of 54,000 hours, these fixtures are made to last decades under normal operation! ASD provides a 5-year limited warranty along with ETL, Energy Star and T24 certifications to guarantee top quality products and safety!



PRODUCT PRESENTATION:

Model	Size	Power	Voltage	Dimming	Lumens	CCT	Finish	Dimensions	Certification
JBS SQUARE									
ASD-JBS-3D8WH-6P	3 inch	8 W	120V	Triac	659lm	2,700/3,000/3,500/4,000/5,000K	White	3-9/16" x 3-9/16" x 13/16"	ETL(5029883), ES, T24, JA8
ASD-JBS-3D8BK-6P	3 inch	8 W	120V	Triac	659lm	2,700/3,000/3,500/4,000/5,000K	Black	3-9/16" x 3-9/16" x 13/16"	ETL(5029883), ES, T24, JA8
ASD-JBS-4D10WH-6P	4 inch	10 W	120V	Triac	857lm	2,700/3,000/3,500/4,000/5,000K	White	4-3/4" x 4-3/4" x 13/16"	ETL(5029883), ES, T24, JA8
ASD-JBS-4D10BK-6P	4 inch	10 W	120V	Triac	857lm	2,700/3,000/3,500/4,000/5,000K	Black	4-3/4" x 4-3/4" x 13/16"	ETL(5029883), ES, T24, JA8
ASD-JBS-6D15WH-6P	6 inch	15 W	120V	Triac	1,232lm	2,700/3,000/3,500/4,000/5,000K	White	6-3/4" x 6-3/4" x 13/16"	ETL(5029883), ES, T24, JA8
ASD-JBS-6D15BK-6P	6 inch	15W	120V	Triac	1,232lm	2,700/3,000/3,500/4,000/5,000K	Black	6-3/4" x 6-3/4" x 13/16"	ETL(5029883), ES, T24, JA8
ASD-JBS-8D20WH	8 inch	20 W	120V	Triac	1,714lm	2,700/3,000/3,500/4,000/5,000K	White	8-7/8" x 8-7/8" x 13/16"	ETL(5029883), ES, T24, JA8
ASD-JBS-8D20BK	8 inch	20 W	120V	Triac	1,714lm	2,700/3,000/3,500/4,000/5,000K	Black	8-7/8" x 8-7/8" x 13/16"	ETL(5029883), ES, T24, JA8
ASD-JBS-12D24WH	12 inch	24 W	120V	Triac	2,158lm	2,700/3,000/3,500/4,000/5,000K	White	11-9/16" x 11-9/16" x 13/16"	ETL(5029883), ES, T24, JA8
ASD-JBS-12D24BK	12 inch	24 W	120V	Triac	2,158lm	2,700/3,000/3,500/4,000/5,000K	Black	11-9/16" x 11-9/16" x 13/16"	ETL(5029883), ES, T24, JA8
JBSR SQUARE WITH ROUND BACK									
ASD-JBSR-4D10WH	4 inch	10 W	120V	Triac	857lm	2,700/3,000/3,500/4,000/5,000K	White	4-3/4" x 4-3/4" x 1-1/8"	ETL(5029883), ES, T24, JA8

For most up-to-date spec sheets please refer to asd-lighting.com

ASD LIGHTING CORP

E-mail: orders@asd-lighting.com | Web site: www.asd-lighting.com



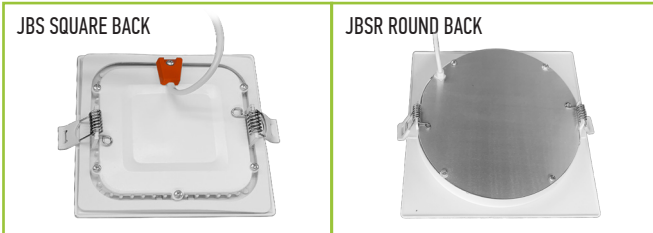


LED WAFER SQUARE

TECHNICAL PARAMETERS:

Model	Work environment	Operating temperature	Power factor	Surge protection	Housing	Lens	CRI	Beam Angle
JBS SQUARE								
ASD-JBS-3D8WH-6P	Wet location	-4°F to 113°F(-20°C to 45°C)	>0,9	1kV	Aluminum	PC	>90	120°
ASD-JBS-3D8BK-6P	Wet location	-4°F to 113°F(-20°C to 45°C)	>0,9	1kV	Aluminum	PC	>90	120°
ASD-JBS-4D10WH-6P	Wet location	-4°F to 113°F(-20°C to 45°C)	>0,9	1kV	Aluminum	PC	>90	120°
ASD-JBS-4D10BK-6P	Wet location	-4°F to 113°F(-20°C to 45°C)	>0,9	1kV	Aluminum	PC	>90	120°
ASD-JBS-6D15WH-6P	Wet location	-4°F to 113°F(-20°C to 45°C)	>0,9	1kV	Aluminum	PC	>90	120°
ASD-JBS-6D15BK-6P	Wet location	-4°F to 113°F(-20°C to 45°C)	>0,9	1kV	Aluminum	PC	>90	120°
ASD-JBS-8D20WH	Wet location	-4°F to 113°F(-20°C to 45°C)	>0,9	1kV	Aluminum	PC	>90	120°
ASD-JBS-8D20BK	Wet location	-4°F to 113°F(-20°C to 45°C)	>0,9	1kV	Aluminum	PC	>90	120°
ASD-JBS-12D24WH	Wet location	-4°F to 113°F(-20°C to 45°C)	>0,9	1kV	Aluminum	PC	>90	120°
ASD-JBS-12D24BK	Wet location	-4°F to 113°F(-20°C to 45°C)	>0,9	1kV	Aluminum	PC	>90	120°
JBSR SQUARE WITH ROUND BACK								
ASD-JBSR-4D10WH	Wet location	-4°F to 113°F(-20°C to 45°C)	>0,9	1kV	Aluminum	PC	>90	120°

LED WAFERS BACK



DIMMING COMPATIBLE CONTROLS:

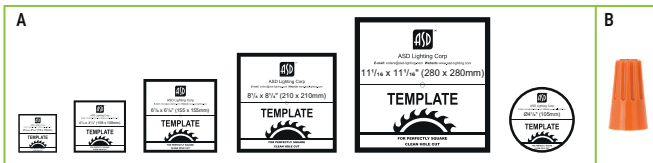
Brand	Lutron	Leviton	Legrand
Models	S-600	6672	IPL06
	DV-600P	6674	
	DVCL-163P		
	PD-6WCL		

DIMENSIONS JUNCTION BOX:

Fixture	Junction box
3, 4, 6, 8, 12 inch	4-3/16" x 2-11/16" x 1-3/8" (107mm x 68mm x 35mm)

PACKAGE CONTENTS:

Description	QUANTITY
LED Wafer Square	1 (6 for 6 pack)
Template for 3, 4, 6, 8 or 12 inch (A)	1
Wire nut (B)	3
Box	1



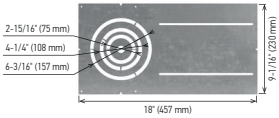
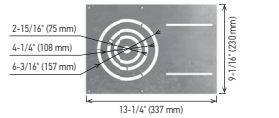
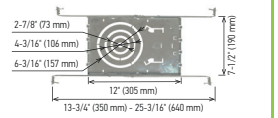
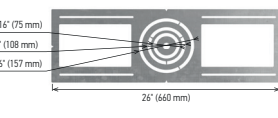
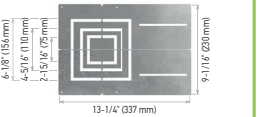
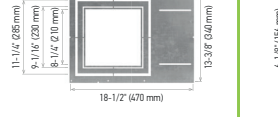
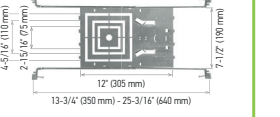
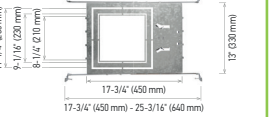

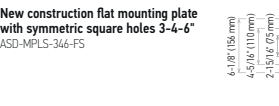
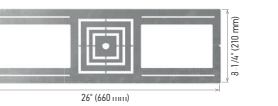
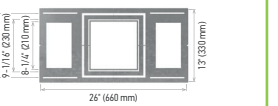

TEMPLATE SIZE:

Model	Fixture	Template size
ASD-JBS	3 inch	2-7/8 x 2-7/8" (73 x 73mm)
	4 inch	4-15/16 x 4-15/16" (110 x 110mm)
	6 inch	6-1/8 x 6-1/8" (155 x 155mm)
	8 inch	8-1/4 x 8-1/4" (210 x 210mm)
	12 inch	11-1/16 x 11-1/16" (280 x 280mm)
ASD-JBSR WITH ROUND BACK	4 inch	4-5/16" (110 mm)

For most up-to-date spec sheets please refer to asd-lighting.com

ASD® LED WAFER SQUARE

ACCESSORIES (sold separately):

New construction flat mounting plate with asymmetric round holes 3-4-6" ASD-MPLR18-346-FA 	New construction flat mounting plate with asymmetric round holes 3-4-6" ASD-MPLR-346-FA 	New construction mounting plate with round holes and sliding clips 3-4-6" ASD-MPLR-346-SC 	New construction flat mounting plate with symmetric round holes 3-4-6" ASD-MPLR-346-FS 		
New construction flat mounting plate with asymmetric square holes 3-4-6" ASD-MPLS-346-FA 	New construction flat mounting plate with asymmetric square holes 8-10-12" ASD-MPLS-81012-FA 	New construction mounting plate with square holes and sliding clips 3-4-6" ASD-MPLS-346-SC 	New construction mounting plate with square holes and sliding clips 8-10-12" ASD-MPLS-81012-SC 	Extension cord 3PIN 	
New construction flat mounting plate with symmetric square holes 3-4-6" ASD-MPLS-346-FS 	New construction flat mounting plate with symmetric square holes 8-10-12" ASD-MPLS-81012-FS 		New construction flat mounting plate with symmetric square holes 8-10-12" ASD-MPLS-81012-FS 		10" ASD-EC-10A 20" ASD-EC-20A 

ACCESSORY COMPATIBILITY LIST FOR JBS:

Accessories	Model	New construction flat mounting plate with asymmetric square holes 3-4-6" ASD-MPLS-346-FA	New construction flat mounting plate with asymmetric square holes 8-10-12" ASD-MPLS-81012-FA	New construction flat mounting plate with symmetric square holes 3-4-6" ASD-MPLS-346-FS	New construction flat mounting plate with symmetric square holes 8-10-12" ASD-MPLS-81012-FS	New construction mounting plate with square holes and sliding clips 3-4-6" ASD-MPLS-346-SC	New construction mounting plate with square holes and sliding clips 8-10-12" ASD-MPLS-81012-SC	Extension cord 3PIN ASD-EC-10A, ASD-EC-20A
ASD-JBS	3"	•				•		•
	4"	•				•		•
	6"	•		•		•		•
	8"		•		•		•	•
	12"		•		•		•	•

ACCESSORY COMPATIBILITY LIST FOR JBSR:

Accessories	Model	New construction flat mounting plate with asymmetric round holes 3-4-6" ASD-MPLR-346-FA	New construction flat mounting plate with asymmetric round holes 3-4-6" ASD-MPLR18-346-FA	New construction flat mounting plate with symmetric round holes 3-4-6" ASD-MPLR-346-FS	New construction mounting plate with round holes and sliding clips 3-4-6" ASD-MPLR-346-SC	Extension cord 3PIN ASD-EC-10A, ASD-EC-20A
ASD-JBSR	4"	•			•	•

INSTALLATION GUIDE

IMPORTANT SAFETY INFORMATION:

Please read all the instructions below before installation.

- ▶ Make sure that the supply voltage corresponds to the rated product voltage.
- ▶ The product must be installed by a qualified electrician in accordance with the National Electrical Code and corresponding local codes.
- ▶ If the product is damaged, do not use it.

⚠ WARNING

Risk of personal injury – read and follow all warnings and installation instructions. Keep or give to the owner for future reference.

Risk of cuts: Wear gloves to prevent cuts or abrasions when removing from carton, handling, installing, and maintaining this product.

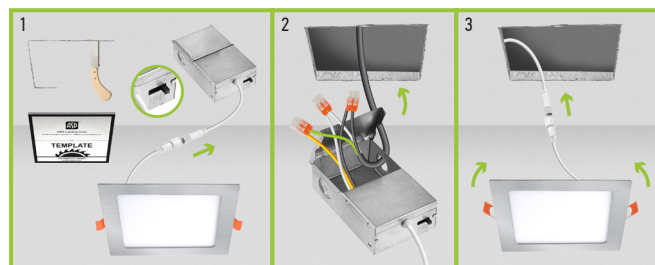
Risk of electric shock: This product must be installed in accordance with the applicable installation code by a person familiar with the construction and operation of the product and the hazards involved.

Risk of Fire: Minimum 194°F supply conductors. Consult a qualified electrician to ensure correct branch circuit conductor.

ASD® assumes no responsibility for claims arising out of improper or careless installation or handling of this product.

INSTALLATION STEPS:

1. Use template to cut an appropriate sized hole. Disconnect the fixture from the junction box. Choose needed color temperature by adjusting the switch. Close the junction box.
2. Open junction box. Connect the wires: Black to Black, White to White, Copper to Green. Secure the connection with quick connector.
3. Insert the junction box into the cut hole, leaving the connection cable outside. Connect the fixture to the Junction box inserting the cable and securing it with a cap. Push the spring loaded clips upwards and insert the fixture base into the mounting hole. Release the clips, so the fixture fits securely.



* The fixture is suitable for ceiling thickness less than 0.5 inch.

For most up-to-date spec sheets please refer to asd-lighting.com

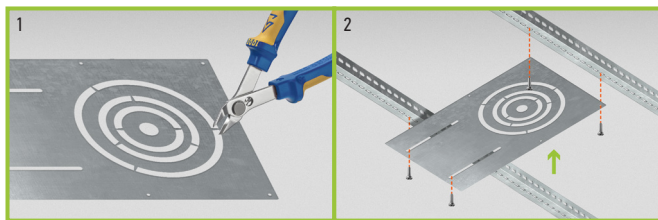


LED WAFER SQUARE

MOUNTING PLATE INSTALLATION:

- ASD-MPLR-346-FA ASD-MPLR18-346-FA ASD-MPLR-346-FS
- ASD-MPLR-346-SC ASD-MPLS-346-FA ASD-MPLS-81012-FA
- ASD-MPLS-346-FS ASD-MPLS-81012-FS ASD-MPLS-346-SC
- ASD-MPLS-81012-SC sold separately

1. Remove the metal ring from the mounting plate according to the size of fixture.
2. Place the mounting plate and secure its position with screws on the beams.



EXTENSION CORD INSTALLATION:

- ASD-EC-10A ASD-EC-20A sold separately

1. Disconnect the LED Mini Panel cable from the Junction box cable.
2. Connect one end of the Extension Cord to the LED Mini Panel cable, and the other end of the Extension Cord to the Junction box cable.



ORDERING INFORMATION

Model	Product dimensions	Weight	Pcs. Per carton	Carton size	Carton weight	UPC	GTIN 14
JBS SQUARE							
ASD-JBS-3D8WH-6P	3-9/16" x 3-9/16" x 13/16"	2.4 lbs(1.1kg)	2	14.61" x 9.84" x 4.33"	5.6 lbs	81019020184	10810190201845
ASD-JBS-3D8BK-6P	3-9/16" x 3-9/16" x 13/16"	2.4 lbs(1.1kg)	2	14.61" x 9.84" x 4.33"	5.6 lbs	81019020182	10810190201821
ASD-JBS-4D10WH-6P	4-3/4" x 4-3/4" x 13/16"	2.8 lbs(1.3kg)	2	12.17" x 8.66" x 5.51"	6.5 lbs	81019020192	10810190201920
ASD-JBS-4D10BK-6P	4-3/4" x 4-3/4" x 13/16"	2.8 lbs(1.3kg)	2	12.17" x 8.66" x 5.51"	6.5 lbs	81019020190	10810190201906
ASD-JBS-6D15WH-6P	6-3/4" x 6-3/4" x 13/16"	4.2 lbs(1.9kg)	2	12.99" x 10.04" x 7.40"	9.3 lbs	81019020196	10810190201968
ASD-JBS-6D15BK-6P	6-3/4" x 6-3/4" x 13/16"	4.2 lbs(1.9kg)	2	12.99" x 10.04" x 7.40"	9.3 lbs	81019020194	10810190201944
ASD-JBS-8D20WH	8-7/8" x 8-7/8" x 13/16"	1.0 lbs(0.5kg)	4	10.31" x 6.93" x 12.09"	6.1 lbs	81019020186	10810190201869
ASD-JBS-8D20BK	8-7/8" x 8-7/8" x 13/16"	1.0 lbs(0.5kg)	4	10.31" x 6.93" x 12.09"	6.1 lbs	81019020185	10810190201852
ASD-JBS-12D24WH	11-9/16" x 11-9/16" x 13/16"	1.6 lbs(0.7kg)	4	13.46" x 6.93" x 14.88"	8.4 lbs	81019020188	10810190201883
ASD-JBS-12D24BK	11-9/16" x 11-9/16" x 13/16"	1.6 lbs(0.7kg)	4	13.46" x 6.93" x 14.88"	8.4 lbs	81019020187	10810190201876
JBSR SQUARE WITH ROUND BACK							
ASD-JBSR-4D10WH	4-3/4" x 4-3/4" x 1-1/8"	0.3 lbs(0.1kg)	6	16.22" x 6.26" x 5.39"	4.3 lbs	81019020198	10810190201982

ACCESSORIES:

Model	Product dimensions	Pcs. (pack) per carton	Carton size	Carton weight	UPC	GTIN 14
ASD-MPLR-346-FA-6PACK	13-1/4" x 9-1/16" x 1/16"	24 (4)	14.4" x 9.8" x 3.2"	18.1 lbs	810050739344	10810050739341
ASD-MPLR18-346-FA-6PACK	18" x 9-1/16" x 1/16"	24 (4)	18.9" x 9.8" x 3.2"	32.9 lbs	810128112826	10810128112823
ASD-MPLR-346-FS-6PACK	26" x 8-1/4" x 1/16"	24 (4)	27" x 9.1" x 3.2"	21 lbs	810050739351	10810050739358
ASD-MPLR-346-SC-6PACK	14-3/8" x 10-9/16" x 1-5/8"	12 (2)	17.3" x 11.9" x 13.4"	17 lbs	810050739337	10810050739334
ASD-MPLS-346-FA-6PACK	13-1/4" x 9-1/16" x 1/16"	24 (4)	14.4" x 9.8" x 3.2"	17.7 lbs	810128110303	10810128110300
ASD-MPLS-81012-FA-6PACK	18-1/2" x 13-3/8" x 1/16"	24 (4)	19.5" x 14.2" x 3.2"	36.3 lbs	810128112833	10810128112830
ASD-MPLS-346-FS-6PACK	26" x 8-1/4" x 1/16"	24 (4)	27" x 9.1" x 3.2"	20.7 lbs	810128110310	10810128110317
ASD-MPLS-81012-FS-6PACK	26" x 13" x 1/16"	24 (4)	27" x 13.8" x 3.2"	40.7 lbs	810128112840	10810128112847
ASD-MPLS-346-SC-6PACK	14-3/8" x 10-9/16" x 1-5/8"	12 (2)	17.3" x 11.9" x 13.4"	16.5 lbs	810128110327	10810128110324
ASD-MPLS-81012-SC-6PACK	17-11/16" x 13" x 1-9/16"	12 (2)	21.3" x 17.5" x 15.6"	24 lbs	810128118040	10810128118047
ASD-EC-10A-6PACK	-	60 (10)	7.7" x 6.1" x 5.3"	1.8 lbs	810128110471	10810128110478
ASD-EC-20A-6PACK	-	60 (10)	7.7" x 6.1" x 5.3"	3.1 lbs	810128110488	10810128110485

For most up-to-date spec sheets please refer to asd-lighting.com